



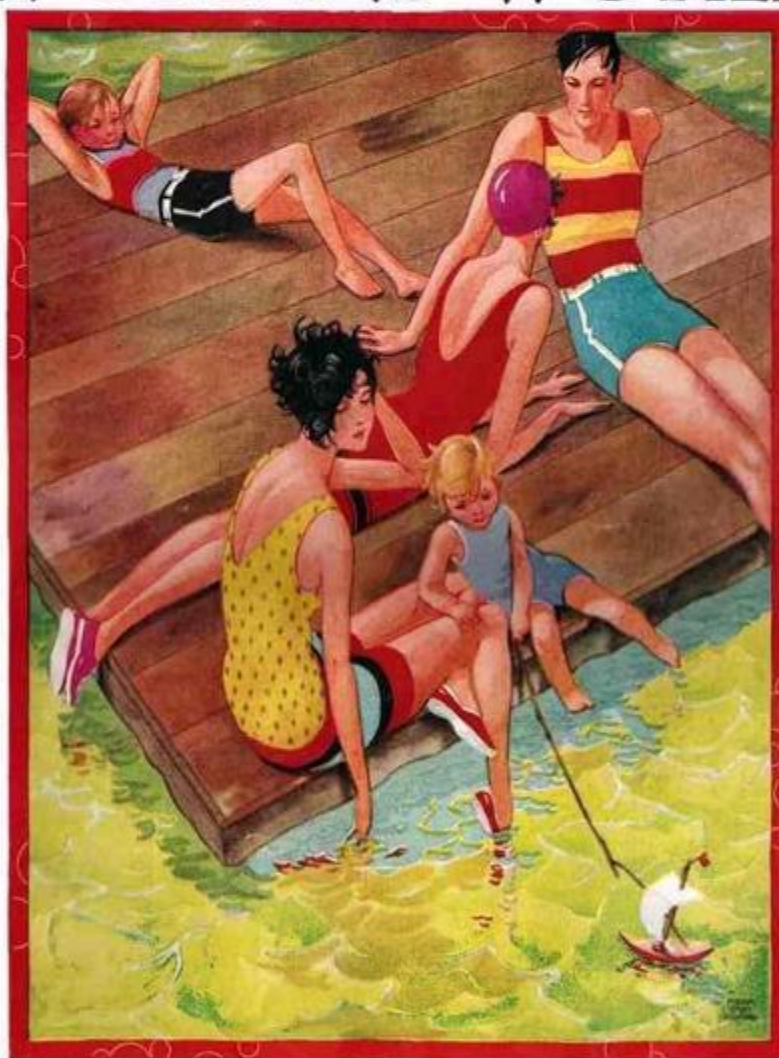
Volume 36, Number 6  
Augusta, GA  
June 2009

# Shade Tree A's Newsletter

Celebrating our 36th year!

## Summertime

## WOMAN'S WORLD



AUGUST • 1929

The Younger Generation

15 CENTS A COPY

**COLORFUL PATCHWORK IN INFINITE VARIETY FOR EVERY PURPOSE**

Features by Octavus Roy Cohen • Edith Barnard Delano • Morris Finbein, M.D. • Carol Denny Hill  
Florence Ward • Johnny Gruelle • Mary V. Brunner • Blanche E. Hyde • Sadie P. Le Sueur

**A HEROINE OF THE PACIFIC—A Romance of the Sea—By CLYDE COOK**



The Model A Years  
1928-1931

| PRESIDENT                                                                         | VICE PRESIDENT                                                                        | SECRETARY                                                                         | TREASURER                                                                          |
|-----------------------------------------------------------------------------------|---------------------------------------------------------------------------------------|-----------------------------------------------------------------------------------|------------------------------------------------------------------------------------|
|  |      |  |  |
| <b>Craig McMullin</b><br>803-637-3790<br>mcmullinc@bellsouth.net                  | <b>Jim McPherson</b><br>706-592-4835<br>james.mcpherson1@us.army.mil                  | <b>Theresa McMullin</b><br>803-637-3790<br>tamcmullin@yahoo.com                   | <b>Richard Dunevent</b><br>706-863-6758<br>franic@msn.com                          |
| <b>National Director</b>                                                          | Tom Roberts                                                                           | 803-649-0054<br>patroberts@wildblue.net                                           |                                                                                    |
| <b>Tour Director</b>                                                              | Jim McPherson                                                                         | 706-592-4835<br>james.mcpherson1@us.army.mil                                      |                                                                                    |
| <b>Board of Directors</b>                                                         | Bill Adams                                                                            | 706-733-8364<br>gadams@aug.edu                                                    |                                                                                    |
| <b>Board of Directors</b>                                                         | Curtis Krosting                                                                       | 706-556-9507<br>chief@jodalefarm.com                                              |                                                                                    |
| <b>Newsletter Editors</b>                                                         | Pat and Tom Roberts                                                                   | 803-649-0054<br>patroberts@wildblue.net                                           |                                                                                    |
| <b>Newsletter Photographer</b>                                                    | Sheila McPherson                                                                      | 706-592-4835<br>smcpherson@mindspring.com                                         |                                                                                    |
| <b>Shady A Ladies BOD Liaison</b>                                                 | Frankie Dunevent                                                                      | 706-863-6758<br>franic@msn.com                                                    |                                                                                    |
| <b>Shady A Ladies Era Fashions</b>                                                | Anne Neely-Beck                                                                       | 478-945-3736<br>anbjeb@gmail.com                                                  |                                                                                    |
| <b>Webmaster</b>                                                                  | Dan Perla                                                                             | 706-855-5730<br>perlada@earthlink.net                                             |                                                                                    |
| <b>Web Page</b>                                                                   | www.shadetreeas.org                                                                   |                                                                                   |                                                                                    |
| <b>Postal Address</b>                                                             | <b>Shade Tree A's Model A Club</b><br>4424 Reynolds Street<br>Hepzibah, GA 30815-7909 |                                                                                   |                                                                                    |

**The Shade Tree A's is a non-profit organization with chapter affiliations with MAFCA and MARC**

The organization is dedicated to the preservation and the restoration of the Model A Ford automobile and supports membership in the national organizations dedicated to the same purpose.

Shade Tree A's membership includes annual dues (\$40) for the Model A Ford Club of America (MAFCA) and a subscription to **The Restorer** Magazine from MAFCA, 250 South Cypress St., LaHabra, CA 90631



Members are also urged to join the Model "A" Restorers Club (MARC). Dues are \$38 yearly and include a subscription to the **Model "A" News**. MARC, 6721 Merriman Road, Garden City, MI 48135



**The Shade Tree A's serve the CSRA (Central Savannah River Area) in Georgia and South Carolina**

## June Meeting Notice

The Shade Tree A's will meet on **Monday, June 8** in Richard Dunevent's garage. The meeting will begin at 7 p.m.

For the June program:

### HOW TO



Those Model A's sure get hot riding around in the summer heat. But not all are hot, some have air conditioners.

Maybe we ought to bring back the air conditioner of the Model A era, a block of ice on the floorboard. Cooling your Model A—YES—that's what it's all about!

## Table of Contents

|                                    |     |
|------------------------------------|-----|
| Officers/Announcements.....        | 2   |
| President's Col/Minutes .....      | 3   |
| Good Men & Women/UTST .....        | 4   |
| On the Shady Side/For Sale/Ford .. | 5   |
| Along the Way .....                | 6-7 |
| June Events.....                   | 8   |
| Vintage Visions.....               | 9   |
| Electrolysis—Part 2.....           | 10  |
| Our Sponsors .....                 | 11  |
| Calendars/Refreshments/Bdays...    | 12  |



Anne Neely-Beck in jail? See "On the Shady Side", page 5.

### Editor's Corner

This is another interesting month in the life of the Shade Tree A's! From soybean suits to Alcatraz, minutes and musings—again there's something for everyone! Read on..!



## OFF THE RUNNING BOARD

Thoughts from our President...

**WOW!!** Do we have a full calendar, or what? I can't remember when we have had so much going on. I hope that this is a good sign and a positive indication that the Shade Tree A's are healthy as an organization and that the club officers are providing activities and technical support that meet your expectations. If not, I would be interested in your thoughts so that we can address any concern(s) and make the necessary changes.

Many thanks once again to our newsletter staff, editors and contributing articles from the membership at large. If you haven't noticed, there is a huge amount of information in our newsletter every month and if you're like me, I have to read it more than once to capture it all. I really like all the art work and detail that is tucked away here and there. For example, take just about any issue and see if you can find all the STA logos. You might be surprised at the number. We are very fortunate as a club to have members that have the talent, time and energy to work so hard on publishing the newsletter every month.

With that said, if you haven't checked out the STA Web Site please do. Dan Perla, our Webmaster, continues to do a fantastic job and has for many many years. More pictures, club membership information, links to other popular Model A sites, copies of newsletters going back several years, and club activities are all just a "click" away.

Have a Safe Trip,  
Craig

## Minutes of the May Membership Meeting



The May Monthly Meeting of the STAs was held May 11, 2009, at member Richard Dunevent's garage at 7:00 p.m. The meeting was called to order by President, Craig McMullin. The attendance sheet was passed around and showed 33 members present. Illnesses included Dan Perla's son, Bob Jones, Billie Jones, Jim Leach, and Christine Gordon. Dan's son is doing much better, Bob Jones had leg surgery and Billie Jones is recovering from the flu – both of them are at home, and Jim Leach is scheduled for pacemaker replacement. Christine Gordon is scheduled to go home on Wednesday after a very long stay in several medical facilities. Please remember all of these members in your thoughts and prayers as they continue to improve.

The Treasurer's Report was given by Treasurer, Richard Dunevent and the April Meeting Minutes as published in the May Newsletter were approved.

There were no Show-n-Tell items this month. However, May birthdays were announced and then an exciting discussion of the oldest member in attendance ensued. The following members were present Jim Miller at 89 years of age, Tom Hitt at 88 years, Glen Boswell at 86 years, Jim Dover at 85 years, and Ed Garvin at 83 years.

The National Director, Tom Roberts reported that the panoramic Pancake Breakfast picture was published in the Restorer Magazine. Please look for that.

Ken Nelson gave out mileage awards for 2008 – Eric Shogren received a radiator plaque for 2,129 miles, Pascal Bryant for 2,124 miles, and Craig McMullin for 2,106 miles.

### Under Old Business:

- The 96 District's Swap Meet was held April 17<sup>th</sup> and 18<sup>th</sup> – Several members participated and according to Rachel D'Entremont had success with her "personal shopper".
- The Fiddlers and Fiddleheads Hill Climb was attended by Jim McPherson and Billy Garland. There were a total of 23 participating cars for the climb. It was a fun time for everyone.
- The Poker Run was held May 2<sup>nd</sup> with 8 STA cars participating. It was a "wild ride" according to many. Frankie Dunevent had the "best" hand and Bill Adams has the "best mileage". They each received a special award handmade by none other than President McMullin.

### Under New Business:

- Tour Director, Jim McPherson, reminded everyone of the Social Security Run. The club will leave on Thursday morning from the Cracker Barrel at I-20 at 9:00 a.m.
- The Aiken Memorial Day parade information was not yet available. However, Tom Roberts will send out the info once he receives it.
- Jim also reminded everyone of the May 23<sup>rd</sup> GaSCar Picnic in Trenton, SC. Gerald Melchior passed out directions and announced that Elvis would be in the "building." Bring a dish and your own chairs. More information is provided in the newsletter.
- Also, members were reminded that there is a special Tech Session ( #18) on Memorial Day, Monday, May 25<sup>th</sup>. Another Tech Session (#19) follows on Saturday, May 30<sup>th</sup>. Both sessions will concentrate on repairs for Danny Norman.

With no further business, the program (Timing Your Model A) was presented by Vice President Jim McPherson, and the business meeting was adjourned.

Respectfully submitted,  
Theresa McMullin, Secretary

## In Need of a Few Good Men or Women

Have you ever thought what it would be like to serve on MAFCA's Board of Directors? Well, it's fun, challenging and rewarding. You meet and work with the greatest people on earth, your fellow Model A'ers. I have been asked a number of questions regarding serving on the Board and thought you might be interested in some of the questions and responses.

**1. How much time does it take?** *There are 9 directors, each serving a specific area of responsibility. Some take a number of hours per week while others may only take a few hours per month. Technical Director Dick Przywitowski has researched and answered around 300 questions in the latest 4 months, the majority of these by email. Obviously, Dick has one of the most demanding jobs.*

**2. How much do Directors get paid?** *The Directors work for free. They are reimbursed for the majority of their expenses but as so often happens there is some out of pocket expense. For example, reimbursement for board meetings includes travel and two nights' lodging. In an event like a National Convention where a Directors Meeting is held, the director would have to pay for all but two nights. There are some incidentals that are not normally paid such as travel to and from the airport and airport parking.*

**3. What about the threats of lawsuits in our litigious society?** *No doubt this has to be a concern for any person desiring to serve, whether it's at the chapter or national level. MAFCA has some protection being a corporation and as a non-profit corporation the protection is broader. MAFCA also provides substantial insurance protection for both chapter and national directors.*

**4. Opinions are like belly buttons, everyone has one. Why is yours more valuable?** *Everyone's opinion is valuable and most of the time there is no right or wrong but what's better. The Board of Directors work together, freely expressing thoughts and, hopefully, concluding with smart decisions. It is important for directors to keep an open mind and listen to others. Recently the Board made a policy decision, only to resend it two months later because we had not thought of all of the ramifications.*

If you are considering running for MAFCA's Board, I encourage you to contact Dave Jones at [membership@mafca.com](mailto:membership@mafca.com)

*(The above is reprinted from the MAFCA Chapter Coordinator Newsletter, prepared by Garth Shreading)*



We have quite a few Concerns and Celebrations this month. Read on.....

- ☞ We understand that **Christine Gordon** is home. We're so glad to hear that—and know that the Gordon family is happy!
- ☞ Webmaster **Dan Perla** has been with his son **Craig** as Craig has had a heart valve replaced. We've heard that he's doing much better. Way to go!
- ☞ We want to let you know that **Tony Gazette's** sister, Donna Cochran, passed away April 25. She had suffered with cancer since last August. We extend our condolences, **Tony and Carole**, and know you will miss her.
- ☞ President **Craig McMullin's** mom, **Alice**, continues to improve from her recent heart surgery. She was scheduled to be home the third week in May.
- ☞ If you haven't read **Anne Neely-Beck's** "Lights! Camera! ACTION!" in MAFCA's May/June "Restorer", pages 28-29, you need to! You'll see several names you recognize! Congratulations to all these STA members (and their A's).
- ☞ Your **STA Newsletter** has just received the Model A Restorers Club "Newsletter Award of Excellence; President's Award" for 2008. It's great to be recognized. Thanks!
- ☞ Congratulations to **Eric Shogren** (2,129), **Pascal Bryant** (2,124) and **Craig McMullin** (2,106), winners of the STA 2008 Mileage Awards. And—the presenter, **Ken Nelson** was recently awarded the Old 96 Club's Mileage Award—3,128 miles in 2008!
- ☞ In her minutes, Secretary **Theresa McMullin** acknowledged the STA's "Super Seniors": **Jim Miller, Tom Hitt, Glenn Boswell, Jim Dover and Ed Garvin**. See the minutes for more details!



# On the Shady Side

...Anne Neely-Beck

Exciting times are going on with the MAFCA Era Fashion Committee, yours truly was approved by MAFCA board to stay on as chairperson and serve an unprecedented fifth year on the committee. I have been heading up the project of revising the Fashion Guidelines; for you that do not know, the Fashion Guidelines is the blue note book manual or "bible" of fashion judging. This is a daunting task but I have a great committee and volunteers which make the job easier. We will have the updates completed by 2010. I will give a seminar at the National Meet in Vancouver, BC on how to use these new guidelines if you want to be an entrant at a meet, or just want to plan a Model A Era Image outfit, or if you are going to be a Judge. We are making it more user - friendly for all.

Our EFC meeting in late March was in the Sacramento area and James and I flew into San Francisco and visited Alcatraz before driving to Placerville for the meeting. David Adair (who writes tool articles for the *Restorer*) and James went to Sacramento Vintage Ford on Friday where they had lunch at a 50's style restaurant on the premises. They also went to visit another MAFCA friend and JSC member to view his Model A tool and car collection. On Saturday while the committee met again he went to Placerville Hardware which is the oldest hardware store west of the Mississippi (this is the area where gold was discovered.) It was a great trip and meeting. Who would have thought when I joined the STA's that I would be serving on a MAFCA committee; if I can do it so can you.



- ➔ 1 gallon black lacquer paint... \$75.00
- ➔ 1 gallon Washington Blue lacquer paint..\$75.00

Contact Glenn Boswell at  
706/863-8703 or  
Cell 706/833-2777.

Alternator, 6 volt 30 amp Nu-Rex  
positive ground with pulley and  
bracket (about 3 years old)  
\$50.00

Contact Tom Roberts at  
803/649-0054 or email at  
patroberts@wildblue.net



## A MAN WHO USED HIS BEAN HENRY FORD & HIS AMAZING SOYBEAN SUIT

Soybeans originally traveled to the United States by ship when Samuel Bowen smuggled them from China in 1765. But it was Henry Ford who put them in cars. When the Great Depression hit, it hit farmers especially hard. Huge farm surpluses meant low crop prices and dwindling income. All of a sudden, Henry Ford's best customers--American farmers--could no longer afford his cars, trucks and tractors. Ford knew that "if we want the farmer to be our customer, we must find a way to be his."

Ford put his chemists to work determining what products could be developed from plants. After testing numerous crop plants, they narrowed their focus to soybeans. Experimentation was soon rewarded with the discovery of soybean oil which made

superior auto body enamel. Soybean meal was converted to plastic used to make over 20 parts including horn buttons and gearshift knobs.

By 1936, Ford was using a bushel of soybeans in every car that rolled off the line. But Ford didn't stop there. On several occasions between 1934 and 1943 he entertained reporters at luncheons, in which every course contained soybeans, from tomato juice with soybean sauce to soybean cookies with soybean candy for dessert. Today at the Henry Ford Estate Restaurant in Michigan you'll even find soybeans used in their recipes from time to time!

He himself invented a special fiber he liked to call "soybean wool". Half the cost of sheep's wool, he had a suit made from the fabric for special occasions, promoting the use of soybeans. It wasn't long before a fabric containing 25% soybean wool was being used to upholster many Ford autos. The picture above shows Mr. Ford celebrating his 78<sup>th</sup> birthday (1941) wearing this suit. (As always, he was a great promoter of his inventions, though it was said that his suit was itchy and weak.)

Ford even received a patent for building plastic car bodies based on soybean oil, and on August 13, 1941, he showcased this car. Attached to a tubular frame, the body weighed 30 percent less than a steel car and was much more flexible and durable. The experimental car was also equipped to run on ethanol rather than gasoline but such a novel idea failed to catch on. It's reported that by that time, huge new oil fields were being discovered and petroleum had become much more cost-effective than plant-based ethanol.

*There's a lot to read about Ford and soybeans: [www.theautochannel.com/news](http://www.theautochannel.com/news), [citybarbs.com](http://citybarbs.com), *Popular Mechanics*, 1941, Vol. 76, No. 6, December, 1941 and much more!*



## ALONG THE WAY...

### Old District 96 All Model A

**SwapMeet**

The place to be for Model A'ers was near Greenwood, SC on April 17 and 18. Many STA members took advantage of the good weather to make the trip and see what they could find! The Car Corral had about twelve to



fifteen cars on display, with a couple of them for sale. I even saw a red Prowler!

It was a chance for all of us to renew old friendships and make some new ones—I met Will Cronkrite of Rock Hill, AKA "Ziggy's Daddy"! (*Who's Ziggy? See our May 2009 newsletter!*) Tom went to the Swap Meet both days and bought a few parts that he could then cross off his 'list'!



### Bluegrass Hill and Bluegrass Music

The East Tennessee Region, MARC and FAST Southeast hosted a Hill Climb and the Fiddlers and Fiddleheads Festival April 24 and 25 in Unicoi, TN.

Twenty-three Models A's and several more drivers tried to conquer the hill on Friday. Participants came from as far away as Indiana, Ohio and Florida. On Saturday there was a big crowd of antique and classic cars at the no judging car show, held in conjunction with the Fiddlers and Fiddleheads Festival. The Thermal Belt Model A Club made the event their Spring Tour.



### THE POKER RUN

Folks may have wondered what was going on in Augusta on Saturday, May 2. They saw Model



A's going this way and that—up one side of one street and down another—and it was apparent that the cars' drivers and passengers were having fun! (See the **Bryant** car, below left)

It was the **STA Poker Run**. The eight cars participating were given destinations—when each was reached, they'd check in with either



Sheila or Jim McPherson and get a poker chip. At the final stop, the Dunevent's garage, we traded our hard-earned chips for playing cards. The highest poker hand was held by **Frankie and Richard Dunevent**; and **Jim McPherson**

presented their prize—a STA chock, handmade by our President!



There was a second prize, too—who would cover the required distance in the fewest miles? We were all close in our mileages, but **Gayle and Bill Adams** (above) won that contest—a second STA chock.

Know where Woodrow Wilson's boyhood home is? You had



(Continued on p 7)

to know—or follow someone who gave the impression that they did! And--there was Sheila, handing out poker chips. *Sheila was even asked for a chip by a passer-by who was convinced something special was happening!*

There was one driver who didn't read **all** of his destination information correctly--Daniel Field became Daniel Village (so he visited it and its



Larry DuVall & Jim  
McPherson

speed bumps instead)—no poker chip there! (*No—it wasn't Larry DuVall, pictured at the left—he's just checking his stats with Jim!*)

And just where **was** Sheila at Lake Olmstead anyway-- up this way or down that way? The joggers in the Park must have been wondering what we were doing.

What a fun, unique way to spend a



sunny Saturday in May! Thanks, Jim and Sheila, for planning our **BIG ADVENTURE!**

## Tales of Madison County



Twenty-four Shade Tree A'ers participated in the 14th **Social Security Run May 14-17**. This year, 50% of the participants drove Model A Fords, and 70% drove Fords. On Thursday the STA'ers toured to Social Circle for lunch at the Blue Willow Inn.

That evening the cars were displayed on the town square. Driver introductions and car banners were distributed around the pool at the Hampton Inn later that evening. The Friday Medicare Tour found us on the back roads to Conyers and



lunch at Pa Pa's Buffet. Then it was on to Hard Labor Creek State Park for a BBQ dinner. The Shade Tree A's provided a Mardi Gras parade for the entertainment, complete with a Model A float (THANKS to Larry Komp) to complement Crazy Hat Night. A trailer-side party completed the evening. Saturday the Social Security Run kicked off at 8 o'clock sharp. The first stop was the Rock Eagle 4-H Center, then off to more familiar scenery in Greensboro and Washington with lunch at the Court Street Livery. We were then off to Crawfordville, Union Point, Lake Oconee and Madison. For our efforts, Don and Rosalind Neal won Third Place (and \$100) for driving the Friday tour in the time closest to the average time of all participants, and several won door prizes. A musical review of favorite songs from 1900 to 1932 was presented at the banquet. The cooler weather made for great tour weather, except for a short pop-up shower late Friday afternoon.





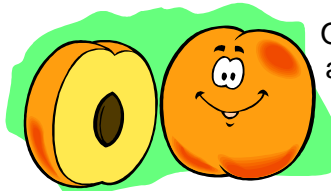
## JUNE EVENTS...near and far!



### **BIG MO** Saturday, June 6

There are only two remaining drive-in theaters in South Carolina, and one is just outside Aiken on Hwy 1. We surely will remember the days in our youth attending the drive-in movies. The STA's will return to the Big Mo in Monetta, SC on **Saturday June 6th**. The gates open at 7, and you do need to arrive early as they frequently sell out. They have two screens and offer a current double feature on each. Admission is \$7 for adults and \$3 for children 12 and over. We will be having a tailgate party, so load up the old car with your favorite goodies to share with the group, and maybe some chairs, and come on out. They do not allow grills or glass containers, and you will need an FM radio to hear the sound broadcast.

### **RIDGE PEACH FESTIVAL PARADE** Saturday, June 20, 2009



On **Saturday, June 20** is one of our favorite and well-attended parades, the Ridge Peach Festival Parade. The parade line-up is 9:30—check with dignitaries to find “our” spot—and the parade begins at 10:30. After the parade, park your Model A under the tall shade trees for all to view while you are enjoying the festival—and all the delicious peach creations!



### **MIKE'S ANNUAL GRANDFATHER'S DAY** Maysville, GA—Saturday, June 6, 2009

Mike's “A” Ford-able will be hosting a Car Show for that Grandfather of all cars—the Model A Ford—along with a Barbecue at Mike's Place in Maysville, GA on Saturday, June 6, starting at 9:30 a.m.

There will be a charge of \$9 (adults) and \$6 (children) for the BBQ lunch, consisting of Barbecue (pork or beef), cole slaw, Brunswick stew and iced tea or soft drinks. The deadline for reservations for food is 1 week before the event. You must prepay for the meal. Late reservations (after the deadline) are \$1 more. Those prepaying will be served first. If you wish to pay by credit card, please call 1-706-652-3866. All profits will be donated to our local Model “A” Clubs.

Mike's is looking forward to every Model “A” owner and his/her family driving or trailering his/her restored or unrestored “A” (no swap meet or flea market stuff, please) to Mike's. There will be no judging, just showing.

Mike's also recommends that you bring folding chairs. If you are needing to pick up an order, please call it in in advance, and they'll have it ready for you.



The 2009 Model A Restorer's Club National Meet will take place June 21 through the 26 in Merrillville, Indiana.

More information can be found in the latest issue of the MARC magazine, “Model “A” News”, or visit the Meet's website at [www.2009marcmeet.com](http://www.2009marcmeet.com).



## Happy Father's Day!

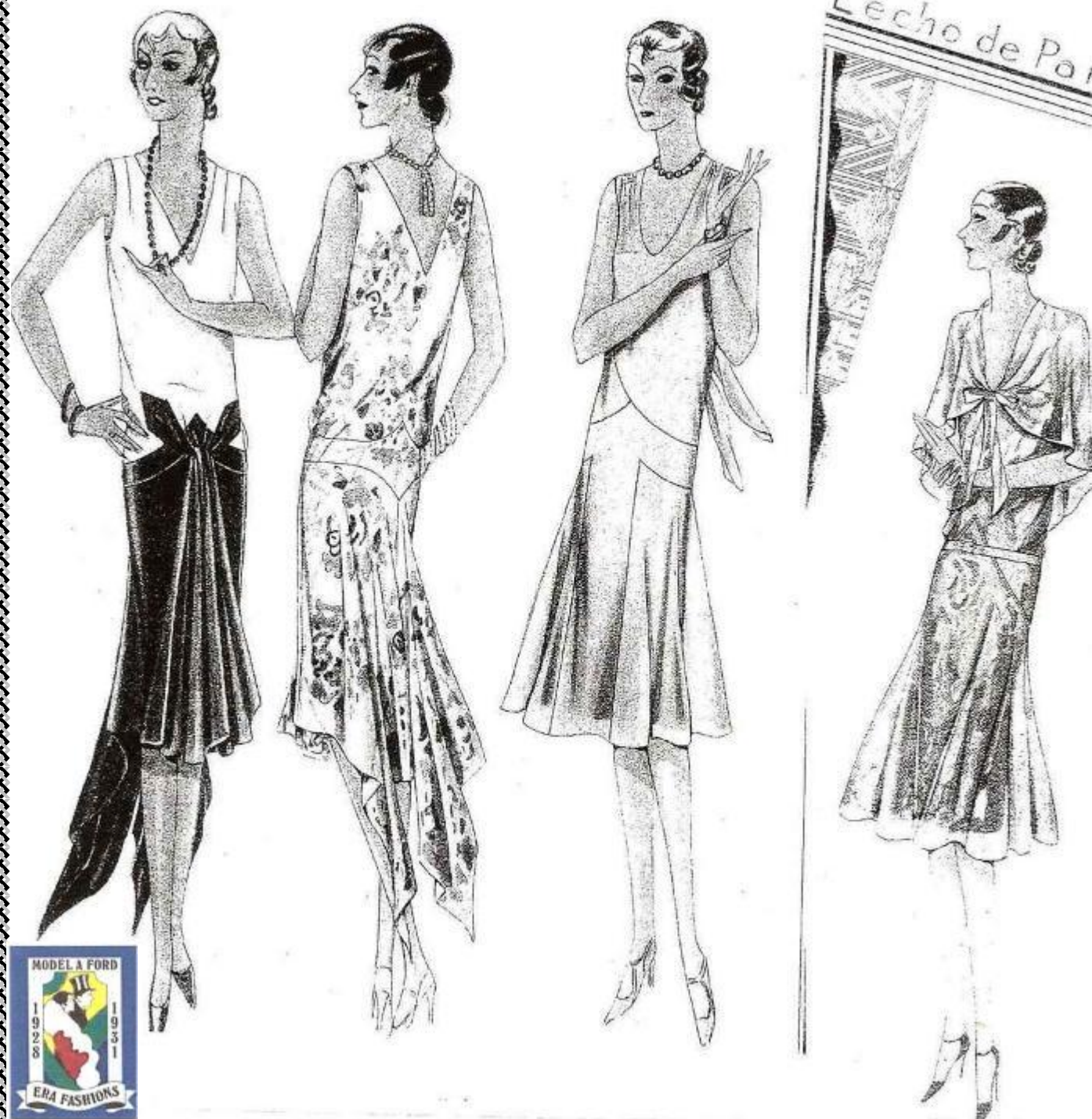


# VINTAGE VISIONS

...Rosalind Neal

## CLEVER LINES POINT TO A HIGHER WAISTLINE

These are patterns from Paris from the late '20's. Because the points suggest a higher line at the hip, the waistlines appear to be creeping upward without actually doing so. The graceful purple flowered dress on the right would be great for afternoon or evening wear. The patterns are from the 1929 McCall's Magazine.



# Electrolysis--Another Way to Remove Rust (Part 2)

...Craig McMullin

Tech  
Corner

*Copied from RED POWER Magazine, Vol. 23, No. 5; January-February 2009. Edited from the original version by Todd Markle, Spring Mills, PA.*

I would like to remind readers of some safety precautions related to the process. The process needs to be done outside in a well ventilated area since it gives off potentially explosive hydrogen gas. Keep the power source far enough away from the tank to avoid a shock hazard. Always shut off the power when making connections to the parts or anodes to avoid sparks. The electrolyte isn't as bad as some chemicals but you will want to wear safety glasses or goggles to keep it out of your eyes. Chemical resistant gloves are probably a good idea as well. Do not put your hands in the solution when the power is connected or you could get a shock.

It is important that the part being cleaned doesn't touch the anodes as this will cause a short. This will keep the process from working and could even cause a fire. Once you have the part suspended in the solution and the NEGATIVE (very important!) lead hooked to it, and the positive lead connected to your anode grid, it is time to connect the power. Connect your leads to the battery (both from the tank and from the charger), and then plug in the battery charger. You should immediately start to see small bubbles coming from the part and the anodes. This indicates the process is working.

Keep checking the part every few hours (or once a day for large parts) by turning off the power and lifting the part out of the electrolyte. The electrolyte will usually get a thick foamy scum on top that will keep you from being able to see the part without lifting it out.

When the part has a uniform black sooty coating, it can be removed from the tank. The next step is the most labor intensive of the whole process. The part needs to be rinsed with water to remove the black coating. For the most part it comes off fairly easily but will require some scrubbing. A stiff bristled scrub brush or a maroon 3M Scotchbrite scrub pad works well for this.

When you finished cleaning off the black coating, the part must be dried immediately. Rust can form on the clean metal in a matter of minutes. Use a towel to dry it as much as possible then let it dry in the sun. If possible, get a coat of primer on it right away. Otherwise, give it a coat of light oil to keep it from rusting until you can prime it.

You may be wondering what to do with a part that is rusty, but still has paint on it. If the part is mostly covered with firmly adhering paint and has very little rust, electrolysis isn't going to work very well. If less than 50% of the surface of the part is covered with paint, and the rest is rusty, electrolysis will work quite well.

You can de-rust multiple small items at the same time provided there is room in the tank and the parts can be electrically connected together. If you use mechanics wire to hang the parts, you could use one long length connected to your negative cable. As long as it makes a good connection with each part, they will all get cleaned. A metal basket can be filled with smaller parts to be cleaned together. The basket needs to be suspended in the electrolyte and connected to the negative cable. I used a stainless steel kitchen strainer to clean a batch of nuts and bolts and it worked well. You will need to shake the basket periodically so each part makes contact with the basket.

After cleaning a few parts you will notice that your anodes are going through some changes. You will see some areas are getting eaten away, while other areas will have what look like stalagmites growing from them. They will also have a red rusty coating. All of this can slow the process down because this coating effectively insulates the anodes from the electrolyte. I usually end up giving my anodes a quick cleaning between each clean part. This cleaning consists of a scrape down with a putty knife and/or a wire brush and a rinse with fresh water. After doing this, the bubbles seem to flow more freely which I assume means the process is working faster.

I mentioned earlier that you can make some adjustments to make more or less current flow. More current means faster results. But be patient as this process is more for marathon runners than sprinters. If the process seems to be going too slow, you could try a higher amperage charger. You could also add more or larger anodes.

Do not try adding more washing soda to the mix thinking it will speed up the process. Stick to the recommended mix of 1/3 to 1/2 cup per five gallons of water. A stronger mix will draw more current, but won't appreciably speed up the process.

One other thing I need to mention that is a by-product of the electrolysis process is hydrogen embrittlement. The process causes the part to absorb hydrogen which can make the part brittle. If the part you are cleaning is a structural member such as a suspension part, wheel, or frame member some special precautions should be taken. From what I understand, the hydrogen will mostly dissipate from the part over a period of week or two.

I have covered most of the basics of electrolysis to hopefully get you started. After you use the process for a while you will probably learn new things and develop your own techniques. If you would like more information, there is plenty to be found on the web by doing a search such as "rust removal" or "electrolysis rust".

Read Part 1 in the March 2009 issue of the Newsletter.



## MEET THE SHADE TREE A'S NEWSLETTER SPONSORS!

Our thanks to the folks below whose generosity supports our newsletter. Please remember them when you need a service they offer, and don't forget to tell them you appreciate their support of our club!

**Need HELP !..with your restoration project?**



For nearly 50 years, car owners have trusted LeBaron Bonney to provide first quality kits and parts for their restoration projects. We know cars and we know that product fit is critical to your antique restoration. We offer interiors, tops, and accessories for Model A and other Ford vehicles (1928-1962). Contact us today for a FREE literature package for your model and a FREE copy of our latest Parts & Accessories Catalog. Your car will be happier for it!

**1-800-221-5408**  
www.lebaronbonney.com

Over 100,000 Kits Sold

UPHOLSTERY KITS • PANEL SETS • CARPETS • TOPS • FABRICS  
TOP ASSEMBLIES • HEADLINERS • PARTS & ACCESSORIES

**LeBARON BONNEY**  
*Company*



Drive Through Time With Peace of Mind

Insure with  
**J.C. Taylor**  
Antique Automobile Insurance Agency  
1-888-ANTIQUE (1-888-263-4783)  
www.jctaylor.com

**Jim McPherson** 706-592-4835



**MODEL A MASTERS, INC.**  
Specializing in hard to find original parts!

FLAT HEAD FORD REBABBITTING  
PRECISION LINE BORING  
MODEL T, A, B, V8 FORDS  
OUR SPECIALTY

**SBB**  
ENGINE REBUILDING

**Schwalm's**  
BABBITTED BEARINGS  
MODEL "A" ENGINE REBUILDING  
ORA LANDIS (717) 687-6976




**Furniture Doctor, Inc.**


**SALES/SUPPLIES** 3323 Peach Orchard Road  
Augusta, Georgia 30906  
(706) 798-5951

**REFINISHING/RESTORATION** 3345 Peach Orchard Road  
Augusta, Georgia 30906  
(706) 793-0716  
www.furnituredoctor.net

**Mike's "A" Ford-Able Parts**  
Specializing in Model "A" Ford Parts 1928-1931



**MIKE BUTCHER**  
Have an "A" Day!



124 Model A Drive  
Maysville, GA 30558  
E-Mail: mike@mikes-afordable.com  
Shop on the WEB at: www.mikes-afordable.com

706-652-3866  
Fax 706-652-2452  
888-879-6453

**SUSAN MELOAN**



**JACKETS, SHIRTS AND VESTS**  
For Shade Tree A's Club Members.  
Digitally Controlled Machine Embroidery Services  
803-441-0097 Susanmeloan@comcast.net

**Joseph E. Spires**  
ATTORNEY-AT-LAW  
ADMITTED IN GEORGIA

**WARD AND SPIRES**  
A PROFESSIONAL SERVICE, L.L.C.  
445 Walker Street  
Augusta, Georgia 30901

Phone (706) 724-2640  
Fax (706) 724-2642  
E-mail: wardspires@aol.com

**GoldCross** Emergency Medical Services, Inc.



1109 Medical Center Drive, Building 4  
Augusta, Georgia 30919

Phone: 706-792-9292  
Fax: 706-792-9250

This space available!  
Please contact  
Craig McMullin  
mcmullinc@bellsouth.net  
803-637-3790



# DOWN THE ROAD.....

## CLUB EVENTS



### JUNE

- 6 Big Mo  
8 **Shade Tree A's Meeting**  
20 Ridge Peach Festival Parade, Trenton, SC

### JULY

- 4 Gilbert Peach Festival Parade, SC  
13 **Shade Tree A's Meeting**

### AUGUST

- 7-9 Chattanooga Tour, Picnic, Hill Climb,  
Accommodations aboard the Delta Queen  
8 **GA Chapter, MAFCA Model A Swap Meet**  
10 **Shade Tree A's Meeting**

### SEPTEMBER

- 10-13 Festival & Hill Climb, Morganton, NC  
12 Penny Pinson Hotdog Day  
14 **Shade Tree A's Meeting**  
20-23 Model A Restorers Club (MARC) National  
**Tour, Charlottesville, VA**  
25-26 Palmetto A's Swap Meet, Smith & Jones  
26 International Model A Day Activity

### OCTOBER

- 3 Oliver Hardy Parade, Harlem  
12 **Shade Tree A's Meeting**  
17 Steak Cookout  
31 Halloween Party, Abbeville, SC

### NOVEMBER

- 7 Ridgeland Creek Old Farm Days  
9 **Shade Tree A's Meeting**

### DECEMBER

- 8 Christmas Lights Tour  
15 **Christmas Party, Old McDonald Fish Camp**

### 2010

#### MARCH

- 5-7 **Richmond Hill Tour**

A **RED** entry denotes a change or an addition to this calendar.

## OTHER EVENTS OF INTEREST

(Non-club events but members are encouraged to participate)

### June

- 6 **Grandfather's Day at Mike's**  
21-26 MARC National Meet, Merrillville, IN

### July

- 3-5 **Maggie Valley Car Show/Flea Market/Swap  
Meet (now held in Fletcher, NC)**

### October

- 7-10 Hershey Swap Meet, Hershey, PA



## REFRESHMENTS

Highlighted name coordinates  
what the group brings

### June

**McMullin**, d'Entremont. Don  
Gordon, George Gordon

### July

**Bryant**, Gazette, Krostings, Mason/Neal

### August

**TBA**

## Happy June Birthdays!



- Jay Broome  
1 – Jo Maypole  
4 – Donna Markwalter  
9 – Don Neal  
20 – Tom Roberts  
22 – Eloise Young  
25 – Roger Dozier  
25 – Bob Collier



Come  
see me at  
**Tea Grove Plantation  
and  
Walthourville  
Village  
March 5-7, 2010!  
..Ziggy**



## MYSTERY MEMBER

This STA member ordered a wolf whistle for his Model A from an auto parts supplier. It worked well the first couple times he used it—then it began to TALK—in Spanish.

May's MYSTERY MEMBERS were  
Rosalind and Don Neal