

Shade Tree A's Newsletter



Volume 38, No. 5 • Augusta, GA • May 2011



INSIDE

Going Home:
Bobby Jones

Tech Tip

Zenith
Mileage
Tester

Vintage Visions

Picnic in the
Park Pictures

Birthdays &
Calendars

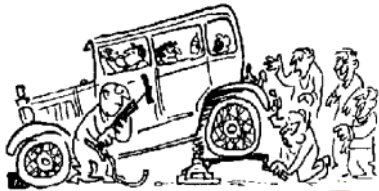
Upcoming
Events

A Natchez
Trace Diary



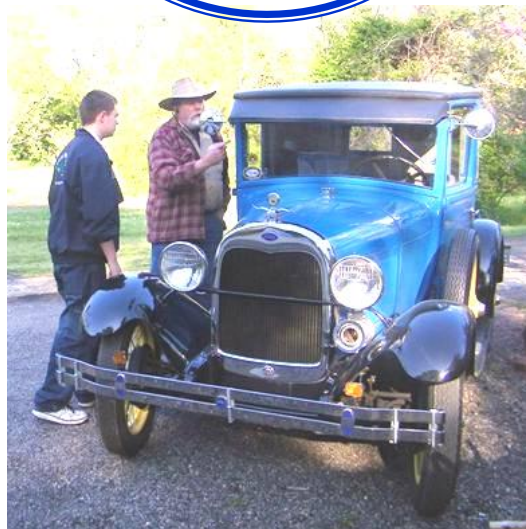
New Member

—and more!



**DOES
YOUR "A"
NEED HELP?**
These pictures
are from Tech
Work Session 28.

Session 29 is April 30;
Session 30 is May 21;
Session 31 is June 11
SEE YOU THERE!



PRESIDENT	VICE PRESIDENT	SECRETARY	TREASURER
			
Craig McMullin 803-637-3790 pres@shadetreeas.org	Jim McPherson 706-592-4835 vp@shadetreeas.org	Doug Wilson 706-863-8990 sec@shadetreeas.org	Richard Dunevent 706-863-6758 treas@shadetreeas.org

National Director	Eric Shogren	803-215-3276 nationaldir@shadetreeas.org
Tour Director	Larry DuVall	803-279-3524 tourdir@shadetreeas.org
Board of Directors	Tom Roberts	803-649-0054 bod1@shadetreeas.org
Board of Directors	Stuart Smith	706-863-8792 bod2@shadetreeas.org
Newsletter (till 6/11)	Pat and Tom Roberts	803-649-0054 newsletter@shadetreeas.org
Photographer	Sheila McPherson	706-592-4835 photographer@shadetreeas.org
Shady A Ladies BOD Liaison	Frankie Dunevent	706-863-6758 bodliaison@shadetreeas.org
Era Fashions	Anne Neely-Beck	478-945-3736 erafashions@shadetreeas.org
Webmaster	Dan Perla	706-855-5730 webmaster@shadetreeas.org
Web Page	www.shadetreeas.org	
Postal Address	Shade Tree A's Model A Club 4424 Reynolds Street Hephzibah, GA 30815-7909	

The Shade Tree A's is a non-profit organization with chapter affiliations with MAFCA and MARC

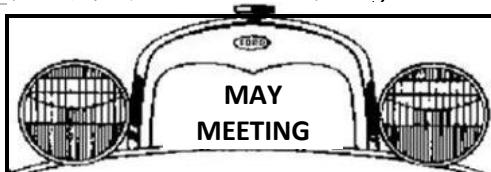
The organization is dedicated to the preservation and the restoration of the Model A Ford automobile and supports membership in these national organizations dedicated to the same purpose.

Shade Tree A's membership includes annual dues (\$40) for the Model A Ford Club of America (MAFCA) and a subscription to **The Restorer** Magazine from MAFCA, 250 South Cypress St., LaHabra, CA 90631



Members are also urged to join the Model "A" Restorers Club (MARC). Dues are \$38 yearly and include a Subscription to the **Model "A" News**. MARC, 6721 Merriman Road, Garden City, MI 48135

The Club also is a member of MAFFI, the Model "A" Ford Foundation, Inc. Its website may be found at www.maffi.org/index.htm



The Shade Tree A's will meet **Monday, May 9** in Richard Dunevent's garage. The meeting will begin at 7 p.m.

PROGRAM:

We can guess what thrust might be like from riding a jet airplane, but what does thrust have to do with the rear main in your Model A? Find out what rear main thrust is, how to measure it, and how to correct it. We have an out-of-town guest who will give us all the details.

Table of Contents

Officers/Announcements.....	2
Pres' Column/New Member/Minutes.....	3
E-Mail Alert!/Tech Tip	4
Bobby Jones/Under the Shade Tree.....	5
Along the Way	6
Upcoming Events	7
A Natchez Trace Journal	8
Vintage Visions	9
Zenith Mileage Tester	10
Our Sponsors	11
Calendars/Refreshments/B-days	12



This is Tom and my next-to-the-last newsletter. We've been preparing these for you for nearly four years—and we're very

happy that Brian, Rachel and Michael will be giving your newsletter (starting in July) a brand-new look! Don't miss the big announcement on page 4 about your e-mail address. It's **SUPER** important.

This month you'll be reading about Bobby Jones, a vintage Zenith mileage tester, vapor lock, Elvis, and the Natchez Trace. We have a big variety of things here—enjoy!

....pat

The Shade Tree A's monthly meetings are the 2nd Monday at 7:00—4338 Owens Road, Evans, GA



Off The Running Board

Thoughts from our President.....

Take a look at our event calendar! If you need something to do, you have come to the right place. We have numerous functions planned from picnics, parades, tours, and movie night. If all this has got you down because your car is not running so well; no problem, we have scheduled many Saturday technical sessions over the next two months where you can get your car problems diagnosed and hopefully get you back behind the wheel with confidence.

For some of our new members who may have questions or may want additional information about some of these activities, please don't hesitate to pick up the phone and call me. I am more than glad to help in anyway I can. We encourage everyone to participate in all of these events. It's a good way to get better acquainted with club members, especially if you're new to the organization.

As with any activity that involves driving your Model A, please be careful on the road. Everyone seems to be in a hurry and there are drivers who don't realize that the Model A doesn't go as fast or stop as quick as a modern car. So, we have to be even more defensive and not only pay attention to what we're doing but we have to watch out for the other guy as well. Don't assume that the other driver will do the safe thing or be courteous.

Have a safe trip,

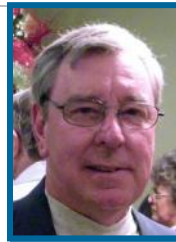
Craig

WELCOME TO OUR NEWEST MEMBER!

Tom Hall
1857 Old 96 Indian Trail
Batesburg, SC 29006

Cell: 803-743-5737

Tom has a '31 SW Town Sedan.



April Meeting Minutes



President Craig McMullin called the meeting to order at 7:04 P M April 11, 2011.

Dick Fraser was introduced as a guest speaker to award mileage awards to club members: James Beck, George Gordon, Curtis Krosting, Jim McPherson and Eric Shogren.

37 members were in attendance and fines were paid for members without name badges.

Do not forget the Gone Fishing Picnic April 23rd on the river.

Birthday dates were given for April. See the Newsletter.

The minutes were approved by Alan Stewart and seconded by Richard Dunevent.

Bobby Jones passed away last week, Don Neal had surgery and is home. Frankie Dunevent is having hip surgery April 15th.

Richard Dunevent gave the Treasurer's report. Make sure your dues are paid.

Tom Roberts reported March 15th as deadline for articles. Tom and Pat Roberts received a letter and "Newsletter Award of Excellence" for outstanding work from Carroll Haley of MARC. Rachael and Brian d' Entremont along with Michael Gordon will take over the newsletter for the July issue and it will be by Email only.

There was a special Ford hub cap at show and tell. (A tractor)

The trip to Richmond Hill was a great success, except for a wreck involving a couple from Queen's City Model A Club.

All events for the coming months are in the newsletter or you can find them in the calendar of events.

Jim McPherson presented "Diagnosing Your Model A Problems" and did a good job.

Refreshments were provided by Jim Miller, Walter Smith, Bob Collier and Don Turley.

The meeting was adjourned at 8:00 P M by President Craig McMullin.

Respectfully submitted,

Doug Wilson, Secretary

LAST MINUTE ADDITION: Here are directions to the Penny Pinson Hot Dog Day (see page 7) at **Emerald Farm** on Saturday, May

Coming from Edgefield, as you approach Greenwood, follow the directions to the right:

Traveling from the South, turn right on the 25 By Pass, come to the Spinx Gas station. Turn right onto East Cambridge. From there take right fork at Triangular Hardware (intersection) Travel 1.3 miles-turn left on Emerald Farm Road. Travel to the end, take the right drive.

Emerald Farm
409 Emerald Farm Road
Greenwood S C 29646
(864) 223-2247
www.emeraldfarm.com

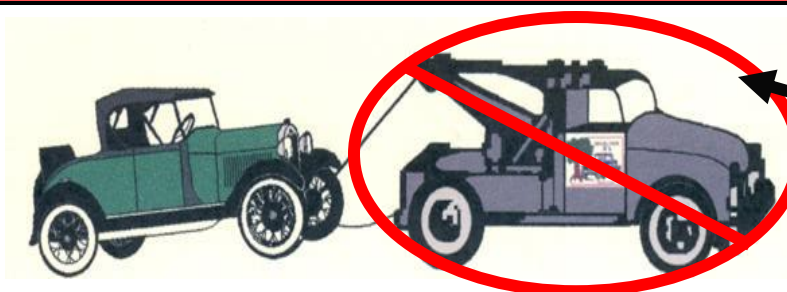
NOTICE: WE NEED YOUR E-MAIL ADDRESS

Starting with the July issue, this Newsletter will be distributed by e-mail only.

We must have your e-mail address or an address at which someone is willing to receive your copy of the Newsletter and make it available to you.

Send this e-mail address to patroberts@wildblue.net

This Newsletter will, as always, be available on our website: www.shadetreeas.org



**PROGRESS REPORT:
Rachel and Brian are
ON THE ROAD!**



Tech Tip of the Month:

Front End Shimmy & Vapor Lock

...Jim McPherson

May, 2011: When a Model A experiences front end shimmy, usually the first thought and check is the kingpins. If replacing the kingpins doesn't solve the shimmy, the next thought is the steering assembly. There is a third, often overlooked component that also contributes to front end shimmy, the bolts holding the wishbone under the clutch housing. Simply replacing this assembly does not solve the problem if the holes in the housing are wallowed out. These bolts will move around, allowing the shimmy to continue. The fix is to machine (or Drill) these holes oversize and bush them to the size of the bolts. These bolts do come in different sizes, depending upon the manufacturer, so make sure to size the bushing to your bolts.

At some point in time someone is going to convince me that a Model A will vapor lock. We are hearing more and more about vapor lock with ethanol containing gas. Doug Wilson asked if you have ever seen a liquid run up hill? You might want to check your gas line coming out of the firewall sediment bowl and going to the carburetor. The last bend and the horizontal line going to the carburetor may have a slight uphill slant. With this uphill slant, the flow of gas is affected. This curve is a prime location for a vapor lock to occur.



1993

REMEMBERING...

Robert H. "Bobby"
Jones

August 11, 1930

April 3, 2011



2009

Everyone knew Bobby and Billie! He was much more than **just** a long-time STA member—read the tribute from Don Turley, below.



A Tribute to Bobby Jones

Bobby Jones' enthusiastic involvement in the Model "A" hobby afforded him many friendships. I am lucky to be one of those friends. Over thirty years ago as I was leaving Atlanta to move to Augusta, friends who knew I had a Model A told me to look up their nephew, Bobby Jones, when I got here, because Bobby also had a Model A. Bobby came to my house, along with Richard Dunevent, and we were off to attend my first meeting of the Shade Tree A's Model A Club and to meet several new friends. Through the years, Bobby has introduced many others to the Shade Tree A's, multiplying the friendships.

In 1990, Bobby and I did a "road trip", driving my 1928 Coupe to the MARC National Meet in Dearborn, MI. Bobby's knowledge gained through many years of Model A experience, and our preparation, resulted in an enjoyable trip with no break-downs. Bobby also enjoyed the annual Fall trip to the AACA National Meet in Hershey, PA. Participating in National events expanded the friendships even more.

Bobby's cheerful smile, his sense of humor and his true sense of caring were but a few of his fine qualities. Bobby's love of his family, church and friends brought him comfort. I thank Bobby Jones for extending his friendship to me.

Don Turley



- **Don Neal** is 'chomping at the bit' to "get going" after recent medical procedures. Be patient, Don—we're glad you're feeling better!
- Correction to Steve Young's address (Jan 2011) - the house number is 3971.
- **Frankie Dunevent** had hip surgery April 15. After a couple of weeks in rehab, she will be returning home. We hope you're feeling better, Frankie—we're 'pulling' for you!

- The annual church chicken BBQ, enjoyed by so many Shade Tree A's members is Saturday April 30th, 5 to 7 at Mann Memorial Church. Tickets are \$7.00 each and can be reserved by calling **Betty Wade** at 706-790-1392.
- Your editors, **Tom and Pat Roberts**, recently visited Grand Canyon West, where they walked on the new Skywalk, helicoptered into the Canyon and rafted 37 miles on the Colorado River. Want to know anything about Arizona cows? Just ask!!
- Your 'editors-in-waiting' (Michael Gordon, Brian and Rachel d'Entremont) recently had an organizational meeting—and are ready to go with the July Issue.

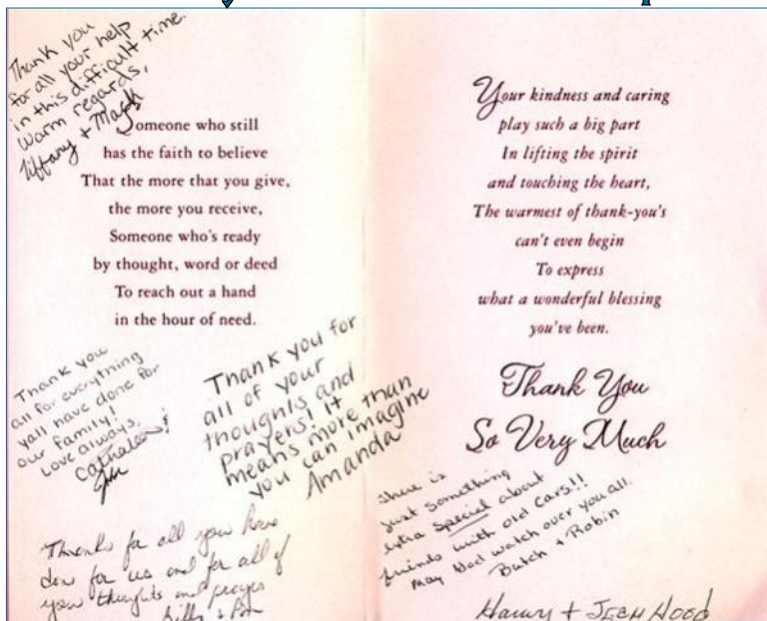


ALONG THE WAY....

Palmetto A's
Picnic in the
Park
Pictures



A Harvey and Jean Hood Update



Left, a card the STA's received from the Hood Family.

Above, the Hood's "A" shortly after the Richmond Hill accident. We're very happy to report that Harvey, Jean and the "A" are all recovering nicely! Happy endings all around.....



Upcoming Events

TECH WORKSHOP 29

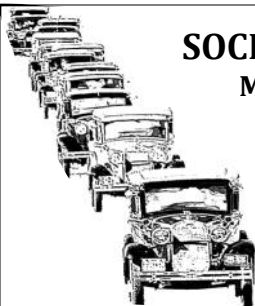
Saturday, April 30, 2011

Our next Tech Workshop will be on **Saturday April 30th**. Join us for breakfast at the Sunrise Grill on Washington Road at 8 o'clock if you can. Around 9 we will go to Richard's garage and tackle all those pesky problems that seem to pop-up just before the summer driving season arrives. If you need help with a specific problem, contact one of the officers so we can have a knowledgeable person there to assist you. I have heard rumors we will have gourmet hamburgers for lunch.



SOCIAL SECURITY RUN

May 12-15, 2011, Madison, GA



The 16th annual Social Security Run, hosted by the Atlanta Region of the Horseless Carriage Club of America, will be held in Madison, GA **May 12-15**.

We have 12 to 15 Model A's signed up to attend the Social Security Run. If you would like to attend, it might not be too late. Call Jim McPherson for information.

For those leaving from Augusta, we will leave from the Cracker Barrel at I-20 on **May 12th** at 8 o'clock and tour to Warrenton for breakfast at Miss Jane's. Our next rest stop will be the antique mall in Greensboro, and then on in to Madison. Don't miss one of the most fun tours you can take.

By popular demand, the Shade Tree A's will again be performing at the banquet. Don't miss it.



JOHNSTON (SC) PEACH BLOSSOM FESTIVAL PARADE

Saturday, May 7, 2011—10:30 am

On **Saturday May 7th**, STA's will meet for breakfast at the Sunrise Grill, 404 E. Martintown Rd. in North Augusta at 8am.

After breakfast we will set our course for Johnston S.C. to join in to celebrate The Johnston Peach Blossom Festival Parade.

Line up location: Edgefield Rd., west of Johnston, S.C.

Line up time: 10am

Parade start time: 10:30am

Contact Person: Roger Lamb

Cell: 803-480-0000

TECH WORKSHOP 30

Saturday, May 21, 2011

We will hold our May Tech Workshop on **Saturday May 21st**. Meet for breakfast at the Sunrise Grill on Washington Road at 8 o'clock if you can. Around 9 we will go to Richard's garage for the day's activities. Those just returning from the Social Security Run may have some new ailments to diagnose and solve. If you have a unique problem, let one of the officers know so we can have knowledgeable people on hand to assist you. A surprise lunch will be served. Don't miss it.



PENNY PINSON HOT DOG DAY

**Saturday, May 14, Emerald Farm
Old '96 Club, Greenwood**

On **Saturday May 14th** we'll meet for breakfast at the Sunrise Grill, 404 E. Martintown Rd., North Augusta, S.C. at 8am. At 9am we will depart for Emerald Farm. We'll eat at noon. Directions may be found on the bottom of **page 3**, this newsletter.

Hot dogs and paper products will be provided. Please bring drinks, a dish to share and of course a chair for relaxing under the shade trees



AIKEN (SC) MEMORIAL DAY PARADE

Saturday, May 28, 2011

Lineup—12:15, parade, 1:00 pm

Line-up time is at 12:15 pm; the parade start time is at 1:00 pm. We have registered for this annual parade, but have not as yet received our lineup position. We will be in touch!



Natchez Trace Journal

MAFCA 2011 National Tour—by Anne Neely-Beck

Day 1 Friday April 8, 2011

We departed Jeffersonville, GA at 10:25 am and drove the Roadster to Huntsville, AL for the night.

Day 2 Saturday April 9, 2011

Left Huntsville on US 431 and drove to Franklin, TN. Lunch at Moe's then checked into Marriott Hotel, the host hotel. Hotel had grave yard on its premises where the family that first settled the land was buried. (1) Bought raffle tickets then got ready for the Grand Ole Opry. Busses took us to the Opry (2) and I must say it was one of the most enjoyable times I have ever had. You need to put this on your "Bucket List", for sure!

Day 3 Sunday April 10, 2011

Off to Loveless Café (3) for the famous breakfast, there was wait so we got take out and sat underneath a tree and ate. I am not sure it was worth \$3.00!! Next on to Don Meadow. private car collection—very nice we enjoyed it. Back to hotel for welcome party, and the raffle drawing. We did good as we won a clutch puller, a temperature gauge and an oil pressure gauge.



Day 4 Monday April 11, 2011

Starting down the Trace (5); stopped at sites in TN and while at one James noticed that one of the lady drivers had no brake lights. We put new tail light bulbs in for her. We stopped for gas and lunch in Collinwood, TN and the lunch site reminded me of some Dale picked for us while going up the Outer Banks to Williamsburg. Made it to Tupelo right before the wind and rain came, had just put the cover over the car under the motel canopy when it struck. Holiday Inn Express let us leave our car under canopy overnight, so we just walked to a restaurant to eat.

Day 5 Tuesday April 12, 2011

Off to the Tupelo car museum (6) at 8:00 where we looked at their awesome collection of cars. Next stop, Elvis' birthplace. (7) We toured the site and then bought a ticket to go into his birth home where his second cousin gave an enjoyable tour. Then off to Tupelo hardware (8) where Elvis bought his first guitar. Then down the road to French Camp Academy for lunch. We took a tour of the Academy

where they prepare troubled youth for an adult life. They do wonders with these kids. Back to the lunch line and we had to wait forever to eat but the food was well worth it. We finished lunch at 3:30pm then on the road again to Canton, MS for the night. We got there about 6:00 and enjoyed happy hour with fellow Model A'ers in our hotel.

Day 6 Wednesday April 13, 2011

Left Canton for the last leg of the trip to Natchez. We arrived in Natchez around lunch time, got a map from the visitors' center and ate lunch at Natchez Under the Hill. Next stop was the Natchez City Cemetery (9) (my favorite author Greg Iles writes about it in his books). We saw the cemetery from Jewish Hill and the Natchez Trace Parkway, next to the cemetery which is in Natchez on the Mississippi River. Went into town so I could get to the Eola Hotel, also mentioned in Greg's books. The dinner in Vidalia, LA. Great barbeque, all the fixings, and visiting with old friends, a great way to end the tour.

Day 7 Thursday April 14, 2011

It was time to leave for home, we took US 84 into AL then AL 17 to US 80 to GA 96. We wanted to make it a one day trip but got caught in rush hour traffic in Montgomery, AL, so didn't get to Columbus, GA until after dark. We found a motel after 3 tries and spent the night.

Day 8 Friday April 15, 2011

Our brake pedal was sticking so we worked on that and headed home. We got home about 11:00 am and we had traveled 1752.1 miles.

P.S. There were four women drivers and the most we paid for gas was \$3.74⁹ in the middle of nowhere AL. Also James adjusted the points once and then the brake pedal, not bad for traveling by yourselves.

Many thanks to David Black and Jill Sullins for making the tour happen.

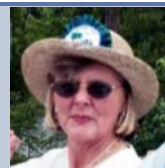
Note: Numbers in text refer to pictures at right. (10) is James Beck in their Roadster on the Natchez Trace.



Thanks,
Anne!

VINTAGE VISIONS

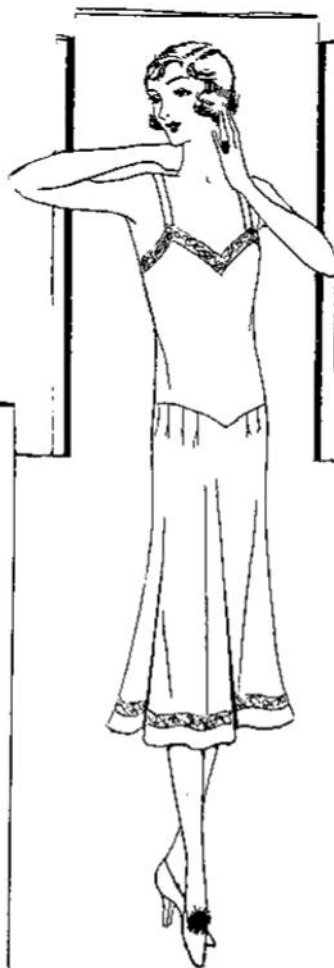
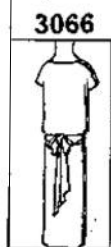
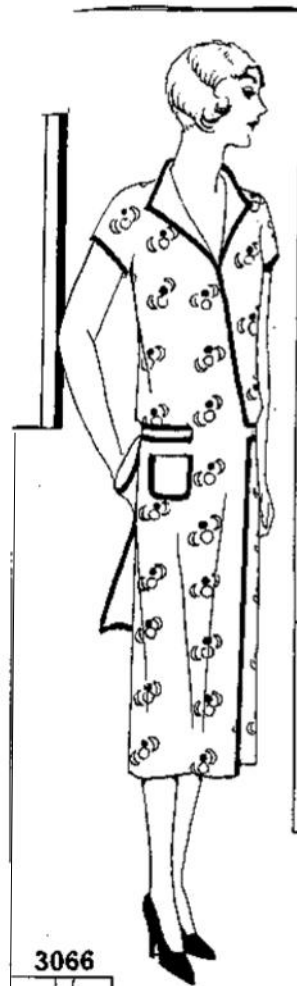
...Anne Neely-Beck



Needlecraft, May 1930, offered patterns for the basic needs of the "everyday" woman.



The attractive wash frock, 3066, would be perfect if made from a cotton fabric.



The charming costume slip, 3237, could be made of rayon or crepe de Chine.



The alluringly smart apron, 159, could be made of cotton and trimmed in a contrasting color.

ZENITH MILEAGE TESTER



Many Model A Ford owners are interested in how many miles per gallon their vehicle gets. The usual method of determining fuel mileage is to fill the fuel tank, record the miles driven until near empty, refill the fuel tank, and calculate the mileage from the miles driven and the amount of fuel needed to refill the tank.

However, years ago the Zenith Carburetor Company of Detroit, Michigan manufactured a device that was used by garages for determining a vehicle's fuel mileage. Zenith manufactured carburetors for early automobiles and is

well known as the standard carburetor used on the Model A Ford from the factory. Here is a photograph of the mileage tester manufactured by Zenith with the original instruction booklet.

This unit was spotted on eBay by fellow Model A owner Jim Mason from Michigan's upper peninsula, who provided these pictures. The owner of the tester was Christopher Horvaith of New York, a collector of vintage garage equipment from the 1930s through the 1950s.

The unit is designed to hang from the driver's window with hooks. Rubber covers on the hooks prevents damage to the car. Right, a top view of the unit shows the mounting hooks, electrical leads, pump unit, fuel hose and the measuring portion of the tester. When not in use, the rubber fuel hose is coiled against the unit and held in place with a leather strap.



Using the tester involved plumbing gasoline from the gas tank into the unit and driving until a measured gallon of gasoline was used. The gasoline was measured in a graduated glass measuring tube on the side of the unit. Because the unit hung inside the car, it meant that gasoline was flowing inside the passenger compartment as it operated.



The picture to the left shows the side of the unit, which contains an information plate and the graduated measuring tube. On the glass cylinder are the words "US GALLON". To the right is a close-up of the side plate that contains instructions for using the tester.

Below is the original box containing the fuel mileage tester. Illustrations on the label show that Zenith made carburetor parts for cars, trucks, tractors, planes and boats.



Thanks to the Rogue Valley A's *Manifold News* for sharing this article. Their Model A club serves members in southern Oregon and northern California. The article may be found at <http://users.erols.com/b-dwheeler/indexzenith.html>

MEET THE SHADE TREE A'S NEWSLETTER SPONSORS!

Our thanks to the folks below whose generosity supports our newsletter. Please remember them when you need a service they offer, and don't forget to tell them you appreciate their support of our club!

Need HELP!...with your restoration project?



For nearly 50 years, car owners have trusted LeBaron Bonney to provide first quality kits and parts for their restoration projects. We know cars and you know that product fit is critical to your antique restoration. We offer interiors, tops, and accessories for Model A and other Ford vehicles (1928-1952). Contact us today for a FREE literature package for your model and a FREE copy of our latest Parts & Accessories Catalog. Your car will be happier for it!

1-800-221-5408
www.lebaronbonney.com

UPHOLSTERY KITS • PANEL SETS • CARPETS • TOPS • FABRICS
TOP ASSEMBLIES • HEADLINERS • PARTS & ACCESSORIES

LeBARON BONNEY
Company

Drive Through Time  *With Peace of Mind*

Insure with
J.C. Taylor
Antique Automobile Insurance Agency
1-888-ANTIQUE (1-888-263-4783)
www.jctaylor.com

Jim McPherson **706-592-4835**



MODEL A MASTERS, INC.
Specializing in hard to find original parts!

FLAT HEAD FORD **SBB** REBABBING
PRECISION LINE BORING
MODEL T, A, B, V8 FORDS
OUR SPECIALTY

ENGINE REBUILDING

Schwalm's
BABBITTED BEARINGS
MODEL "A" ENGINE REBUILDING
ORA LANDIS (717) 687-6976




Furniture Doctor, Inc.


SALES/SUPPLIES 3323 Peach Orchard Road
Augusta, Georgia 30906
(706) 798-5951 www.furnituredoctor.net

REFINISHING/RESTORATION 3345 Peach Orchard Road
Augusta, Georgia 30906
(706) 793-0716

Mike's "A" Ford-Able Parts
Specializing in Model "A" Ford Parts 1928-1931



MIKE BUTCHER
Have an "A" Day!



706-652-3866
Fax 706-652-2492
888-879-6453

124 Model A Drive
Maysville, GA 30558
E-Mail: mike@mikes-afordable.com
Shop on the WEB at: www.mikes-afordable.com

SUSAN MELOAN 

JACKETS, SHIRTS AND VESTS
For Shade Tree A's Club Members.
Digitally Controlled Machine Embroidery Services
803-441-0097 Susanmeloan@comcast.net

Joseph E. Spires
ATTORNEY-AT-LAW
ADMITTED IN GEORGIA

WARD AND SPIRES
A PROFESSIONAL SERVICE, L.L.C.
445 Walker Street
Augusta, Georgia 30901

Phone (706) 724-2640
Fax (706) 724-2642
E-mail: wardspires@aol.com

Countcross Emergency Medical Services, Inc.



1109 Medical Center Drive, Building 4
Augusta, Georgia 30919

Phone: 706-792-9292
Fax: 706-792-9250

MOOG Signs



706-722-8470

RUSSELL TRAPP, SR.
333 East Boundary Augusta, Ga. 30901
Fax 706-724-4055
russell@moogsigns.com



Down The Road....

STA EVENT SCHEDULE

MAY

- 7 Johnston Peach Blossom Festival Parade
 9 **Shade Tree A's Meeting**
 14 Penny Pinson Hot Dog Day, Old 96
 12-15 Social Security Run
 21 Tech Work Session 30
 28 Aiken Memorial Day Parade



JUNE

- 4 Big Mo Drive-In Theater
 11 Tech Work Session 31
 12 **Sterling House Display, N. Augusta**
 13 **Shade Tree A's Meeting**
 18 Trenton Peach Festival Parade
 25 Nancy Carson Library Display, N. Augusta

JULY

- 4 Gilbert Independence Day Parade
 11 **Shade Tree A's Meeting**
 23 Phinzy Swamp Nature Park Tour

AUGUST

- 8 STA Dinner Meeting, Hibachi Grill
 20 Sno-Cap meeting, North Augusta

SEPTEMBER

- 10 International Model A Day ("Gentlemen, Start Your Engines")
 12 **Shade Tree A's Meeting**
 23-24 Palmetto A's Swap Meet

OCTOBER

- 10 **Shade Tree A's Meeting**
 15 Steak Cookout (Below Dam)
 22 Lunch, Miller's Breadbasket, Blackville, SC with Low Country and Palmetto A's

NOVEMBER

- 14 **Shade Tree A's Meeting**

DECEMBER

- 10 STA Christmas Party

OTHER EVENTS OF INTEREST

(Non-club events but members are encouraged to participate)

June

- 4 **Grandfather's Day Car Show & BBQ, Mike's**
 27-July 1 MARC 2011 National Meet, San Diego, CA



August

- 25-28 Charlotte AutoFair Fall Meet

September

- 29-Oct 1 Historic Tour, Rally, Hill Climb, Greenville, TN

October

- 3-8 Hershey Swap Meet

November

- 5 Richland Creek
 18-20 Moultrie, GA Swap Meet

A **RED** calendar entry denotes a change or an addition.

REFRESHMENTS

Name underlined coordinates what the group brings.

May

- Dunevent**, Melchiors, Prince, Dinkins, Wilson

June

- Alan Stewart**, Jim Smith



May 8

Happy May Birthday!

- | | |
|-----------------------|---------------------|
| 5 - Montie Knapp | 21 - Billy Garland |
| 7 - Jim Dover | 23 - Peggy Peters |
| 8 - Lois Melchiors | 24 - Linda Krosting |
| 11- Mike Gordon | 28 - Betty Wade |
| 15 - Russell Young | 28 - Ben Deitz |
| 18 - Dotti Shogren | 28 - Don Gordon |
| 19 - Brenda Prince | 29 - Joe Christian |
| 20 - Gerald Melchiors | |

May 30

