

Shade Tree A's News

PARADING THOUGHTS

Rachel d'Entremont

It's amazing that people will come out in any weather to watch a Christmas parade but they do. This year really proved that point with more rainy, cloudy, and cold weather than I remember in the past. People were bundled up in hats and gloves and wrapped in blankets in downtown Aiken when the parade rolled by, many already chilled to the bone from staking out their location a hour before the parade even started.

The Graniteville parade was even worse as the cloudy yet warm day lured people out in shorts, sandals, and tank tops. The minute the parade began, the temperature plummeted and a steady rain began. Few were prepared for the weather yet there was a big crowd.

I'm not especially fond of driving my Model A in parades. It's a lot of work to clean up the car, find appropriate decorations, and to get to the actual parade. Then there's a lot of standing around after the cars have been decorated. We're instructed to start the cars 5 or 10 minutes before we actually start moving resulting in some cases in probably close to a hundred vehicles, some very large trucks, sitting there with the engines running just burning gas. Knowing this, I'm always tempted to wait but I'm never confident that the car will start immediately so I sit there with the engine running like everyone else.

Once we're actually moving, I love it when every year a certain officer from Public Safety says "don't stop, keep moving". Am I supposed to hit the person in front of me? And driving 2 MPH is really tiring for the leg operating the clutch.

Some towns don't allow candy or other items to be thrown by the parade participants. I wish all parades had that rule. Supposedly responsible parents tell toddlers and small children to run out in

front of moving vehicles and horses to get pieces of cheap candy. What isn't scooped up by the crowd gets crushed and gets left as litter. I wonder how many kids venture out into the street later in the week to retrieve overlooked candy. During the Graniteville parade (one which encourages candy distribution) several people yelled to me (one of the only STA cars without windows so I could hear them) "where's the candy?" Many people were so busy locating every scrap of candy that I doubt they even noticed who or what was in the parade.

Then why do I participate in a few parades at Christmas time? I enjoy visiting with the other STA members before the parade but mostly because nothing beats the looks of joy on the faces of the people (at least those not scrambling for candy) when they see a string of Model A's roll by.

ABOUT THE SHADE TREE A'S

<http://www.shadetreeas.org>

The Shade Tree A's is a non-profit organization dedicated to the preservation and the restoration of the Model A Ford automobile. Shade Tree A's annual dues (\$65) include membership in the Model A Ford Club of America (MAFCA, \$40) and a subscription to *The Restorer Magazine*. Members are also urged to join the Model "A" Restorers Club (MARC, \$38) which includes a subscription to *Model "A" News*. The club also is a member of MAFFI, the Model "A" Ford Foundation, Inc.

Meetings are generally held on the 2nd Monday of each month at Richard Dunevent's garage, 4338 Owens Road, Evans, GA. Meetings begin at 7p.m. and are followed by refreshments.

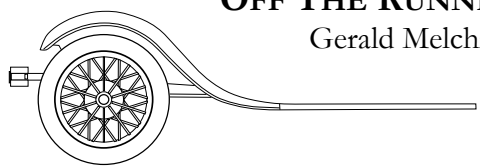
ABOUT THIS NEWSLETTER

© 2014 Shade Tree A's, except as noted. Please contact Rachel d'Entremont (Newsletter@ShadeTreeAs.org) concerning reprinting of articles, illustrations, or photos.

Sketch 1930 Model A Tudor Sedan
Steven Brown

OFF THE RUNNING BOARD

Gerald Melchiors, President



Now that all the excitement of the Christmas and New Year's holidays is over it sure seems quiet around the household. With the toys, Christmas wrappings, squealing grandchildren, and other assorted paraphernalia no longer underfoot, life seems sort of dull. Apparently one gets used to (or immune to) all the constant activity but to return to our normal routines may be a welcome change.

I have had numerous comments about our Christmas party this year, almost all being favorable. Overall, most everyone liked the idea of having a party without having to do extensive planning, set-up, and cleaning afterwards. The food, desserts, Christmas decorations (even a Christmas tree!), and Theresa's and Sheila's overseeing our gift exchange were really something. All combined to lend a festive air to the whole evening. Again, we owe a "thank you" to Doug Wilson and Sheila McPherson for working with the folks at T-bones to iron out the details.

This year, like every year, the Shade Tree A's participated in a host of Christmas parades. Although this year the weather (rain) proved to be somewhat of an issue, our members did an excellent job of representing our club. Those of you who took the time to bring out a piece of history by driving your Model A's in these parades are doing a fine service to both our community and our hobby.

For the Shade Tree A's, 2014 promises to be an exciting year. Our officers and board members have already been asking what changes you would like to see in our club that would better support the Model A Ford hobby. If you have any ideas along the lines of club improvement, do not hesitate to bring them up. The Shade Tree A's is your club and it is only with your input that our club can remain responsive to your interest as a Model A enthusiast.

Remember..."A busy Model A is a happy Model A". See you at the meeting,

Gerald Melchiors

CONTACT INFO

Mailing Address:
Shade Tree A's Model A Club
4424 Reynolds Street
Hephzibah GA 30815-7909

Gerald Melchiors President	(706) 294 5065 pres@ShadeTreeAs.org
Greg Jones Vice President	720-272-7907 vp@ShadeTreeAs.org
Don Cerefin Secretary	803-644-4437 sec@ShadeTreeAs.org
Richard Dunevent Treasurer	706-339-8167 treas@ShadeTreeAs.org
Walker Crosby National Director	803-645-7316 nationaldir@ShadeTreeAs.org
Tom Roberts Membership Coordinator	803-649-0054 membership@shadetreeas.org
Doug Wilson Board of Directors	706-533-4377 bod1@ShadeTreeAs.org
	bod2@ShadeTreeAs.org
Rachel d'Entremont Newsletter	newsletter@ShadeTreeAs.org
Sheila McPherson Photographer	706-592-4835 photogpher@ShadeTreeAs.org
Frankie Dunevent Shady A Ladies	706-863-6758 bodliaison@ShadeTreeAs.org
Anne Neely-Beck Era Fashions	478-945-3736 erafashions@ShadeTreeAs.org
Dan Perla Webmaster	706-855-5730 webmaster@ShadeTreeAs.org

MODEL A'S IN THE NEWS

From the Aiken Standard—December 28, 2013



MARC DRIVING AWARDS PROGRAM

Robbie Jones has volunteered to be the Shade Tree A's MARC Driving Awards Program coordinator.

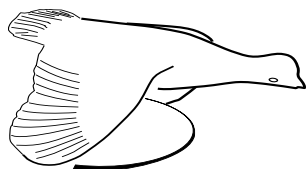
If you are currently registered in the program, your mileage has not been updated since about 2010. If you want to continue participating in the program, please send Robbie your mileage as of December 31, 2013 to

drivingawards@shadetreeas.org

If you are a member of MARC and have never registered for the program and would like to participate, contact Robbie at the email address above for a registration card.

A one-time registration fee of \$1.00 is required and the program is open to all MARC members. The first award is given at 2,000 miles and every 5,000 miles thereafter. Mileage does not have to be earned all in one year and can accumulate from year to year. Additional information on the program can be found on the MARC website at:

www.modelaford.org/drivingawards.htm



LOOKING AHEAD

CLUB EVENTS

- Jan. 1– New Year's Day breakfast
- Jan. 13-monthly meeting
- Feb. 10-monthly meeting
- Feb.15– Sweetheart Pancake Breakfast

OTHER EVENTS

- Jan.10&11-Les Andrews in Montgomery, AL
- Mar. 21&22-Barber Motorsports Park Tour, AL
- Oct.16&18 -Sweet Home Alabama Tour,

REFRESHMENTS

January:	McPherson
	Komp
	Perla
February:	Roberts
	d'Entremont
	Shogren
	Crosby

YOUR MODEL A PROJECT PHOTOS

Dan Perla, webmaster, is asking members to provide photos for the Photo Collection. He's suggesting a new section for photos covering the restoration process of individual cars. He also has a section with photos of members' cars which is very much out of date.

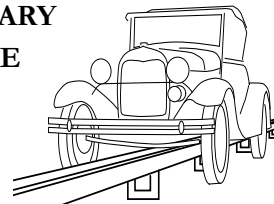
Dan needs your help so get out your cameras and send your pictures to Dan .

NEWS LETTER ON THE WEB

If you can't find your newsletter or it doesn't show up in your e-mail, it is available, along with past newsletters, at www.ShadeTreeAs.org.

FROM THE JANUARY ASSEMBLY LINE

- 4 - Michael Gordon
- 12 - Frankie Dunevent
- 14 - Carrie Horner
- 20- Leonard McCain
- 24 – Sharon Stewart
- 27 – Marvin Vanover
- 29- Heidi Carruthers
- 31 - Jack Horner



NEWS FROM UNDER THE SHADE TREE

If you have news to share, let me know at newsletter@ShadeTreeAs.org

- ♦ Dotti Shogren is recuperating from foot surgery.

GIBSON CHRISTMAS PARADE

December 15, Gibson, GA
Gerald Melchiors

It was a small but determined group of Shade Tree A'ers that headed out for Gibson, Georgia on December 15th for the Annual Gibson Christmas Parade. The parade had originally been scheduled for the day before, December 14th, but all-day, monsoon-like rains forced a cancellation.

After checking the radar and weather forecast for the next day, parade officials decided at the last minute to reschedule and notified us of the change in plans. In spite of the short notice and very cold weather, Doug Wilson, Richard and Frankie Dunevent, Bill Garland, and Gerald and Lois Melchiors all drove their Model A's in the parade. The old cars with bright Christmas decorations and A-OO-GA horns were, as always, a delight to the parade spectators, especially the residents of the local nursing home.

Following refreshments at the home of Renae and Greg Kelley, relatives of Frankie and Richard Dunevent, our stalwart Model A'ers headed home with no unscheduled roadside "technical sessions".

CHRISTMAS PARTY HIGHLIGHTS

December 7, 2013

The STA Christmas Party/Annual Meeting was held at T-Bonz in Augusta with many of the members coming from various parades around the area. Many of the members showed up in Model A era-style and vintage clothing. There was a wide variety of styles running from formal to sporty. A big thank you to those who made the extra effort. It added to the festivities.

Doug Wilson and Sheila McPherson were thanked for making the arrangements for the party.

The results of the Board of Directors election were announced. Although there were a few write-in votes, no president was elected nor was a tour director. The following were elected:

Vice President: Greg Jones

Secretary: Don Cerefin

Treasurer: Richard Dunevent

National Director: Walker Crosby

Board Member: Doug Wilson

Club pins were awarded to acknowledge milestone in club membership though many who were to receive the pins were not in attendance. Members are reminded that if you received a new pin, the old pin should be returned to be recycled.

The Monroe Wade award was presented to Eric Shogren. Congratulations, Eric! The text of the presentation is on the following page.

As in the past, one of the highlights of the party was the Chinese gift exchange. With a five-dollar suggested limit and the suggestion of re-gifting and recycling, some interesting gifts made the rounds including a bent bolt, lottery tickets, wine, a table setting made from used car parts, and a lantern. Everyone appeared to be having a good time.

Members were reminded of the New Year's Day breakfast and urged to bring their Model A's.



**2013 MONROE WADE AWARD WINNER:
ERIC SHOGREN**



Outgoing President Gerald Melchior presents the Monroe Wade Award to Eric Shogren at the Christmas Party/ Annual Meeting on December 7.

The presentation:

After unanimous agreement, the Monroe Wade Award Committee is pleased to present this year's winner.

This individual received several nominations, all with the same theme: that he meets or exceeds all of the possible criteria for the award. This member is always willing to help others repair their Model A's and often makes "house calls", or rather "garage calls". He organizes technical seminars and attends whenever able. He contributes to the newsletter and had at least one article picked up by a national Model A magazine. He has presented technical programs at club meetings and brought items for show and tell. Not only does he help keep others' cars on the road, but his own cars are literally on the road on a regular basis running errands, going shopping, driving to restaurants, and going to assist others with their cars. He has not only represented the club at national meets, he was instrumental in organizing one. He is an ambassador to the non-Model A world sharing his knowledge of history and engineering.

He is a past officer of the Shade Tree A's and if his job didn't require out-of-town travel for extended periods, would willingly serve again.

This year's winner makes new members feel welcome; no question is unworthy of his time. And he is always ready to offer advice, tools, parts, and muscle power. When not away on business, he participates in almost all Shade Tree A events. Even when on the west coast Eric Shogren is only a phone call or an e-mail away from solving someone's Model A problem.

THE GOOD OLD DAYS

Keith Lewis

Once upon a time I was a great-grandson, with four living great-grandparents. Today I am a great-grandfather with 36 grandchildren and 10 great-grandchildren. The passage of time has brought many changes. Seventy-four years of life experiences have brought significant changes. Ford automobiles help me to stay connected to that by-gone era when I was a young great-grandson. My Model T and Model A Fords keep me connected to the tenor and tempo of my youth. But I miss the good old days!

Automobile clubs such as the Shade Tree A's help to preserve the past. They are tangible preservers of our history. Today our cars evoke an interest in the public and in people's admiration. But the cars harken back to a time that few people remember and that most have little knowledge of.

In the 40's Model T's and A's were still on the road in daily service and were just old cars attracting scant interest. In the 50's they were still around but becoming a novelty. They were cheap. You could buy a good one for \$40 or less. They were still plentiful, but few were used as daily drivers. However, in 1961, I was stopped in Reno, Nevada by a traffic cop who was driving a '31 Coupe Squad car! More than a few Model A's were turned into hotrods.

Everyone was acquainted with them. Most people had driven one if not actually owned one in the past. But over time they went the way of the dinosaurs and vanished from view. They were buried in garages and barns and left unprotected in the woods and on the prairies, nearly forgotten.

In the mid to late 50's and early 60's a few people like myself became "Ford Preservationists." Like archeologists seeking dinosaur bones we found and resurrected Model T and A Fords. In order to restore them you found new-old-stock parts in old Ford dealerships or made your own "new" ones or found serviceable used ones. Smith and Jones, Snyder's, Mike's "A" Ford-able Parts, Bratton's Antique Auto Parts and Mac's didn't exist. But you could still, sometimes, find parts in Western Auto stores.

I once made a rear coupe fender from 3

rusted out, twisted and bent fenders full of bullet holes. I straightened; sandblasted and sectioned 3 pieces and welded them together, leading in the seams to form a flawless "new" fender. Today I could buy a new fender.

Today when we show our cars to the public, people are taken in by their beauty and simplicity. When people see my 1917 Runabout they are flabbergasted and amazed to learn it is 96 years old! But it is rare to find someone who remembers them first hand. More than a few Model A owners do not remember them first hand before their own car turned into a dinosaur and was resurrected.

There was a time "in the good old days," when I could drive down the street and oldsters would wave and smile and flag me down. They would walk up to the car and tell me that it was a 1923 T Ford. They would tell me mine had the wrong radiator core in it and the carburetor was also from the wrong year! They had bought one new in 1923 for \$345 or used for \$45 in 1934. They knew what it was and they always wanted a ride home just down the street a half a mile or so. I'd take them on a 5-mile jaunt and then take them home. They knew the difference between a Model T and a Model A! They had memories!

Today when I drive down the street oldsters look at me and smile and ask, "What is it?" When I tell them they still don't know and ask, why the Model A followed the T. Old people in the past knew the answer to that question and did not ask it. People today want to know how fast it will go and how far from home can I drive it. When I tell them I can drive it anywhere and it has a top speed of 70 but that I drive it at 40 they shake their heads.

The oldsters of by gone days could tell me how to adjust the transmission bands in a T or how to "tune" the carburetor in an A and adjust the timing for smooth performance. They knew how to check the toe in on a Model A front end. The oldsters of by gone days had memories of "sparking" with their sweethearts in the seats of Model T or Model A Fords. I miss the "good old days" when oldsters knew first hand what a T Ford and an A Ford is.

I'm not a great grandson anymore. I'm a great grandfather. And I miss "*the good old days*"

THE AIKEN JAYCEE'S CHRISTMAS PARADE

Sunday, December 8, 2013



The Aiken Christmas parade was held on a cold, cloudy Sunday and the crowd was not as large as usual. Ten cars represented the STA's.

One of the highlights of the STA's entry was the waving bear on the hood of Don Cerefin's car. Once the kids along the route noticed the bear's little paw moving up and down, there were squeals of delight!

For once, we were assigned a nice shady line-up position - we would have welcomed the sun!

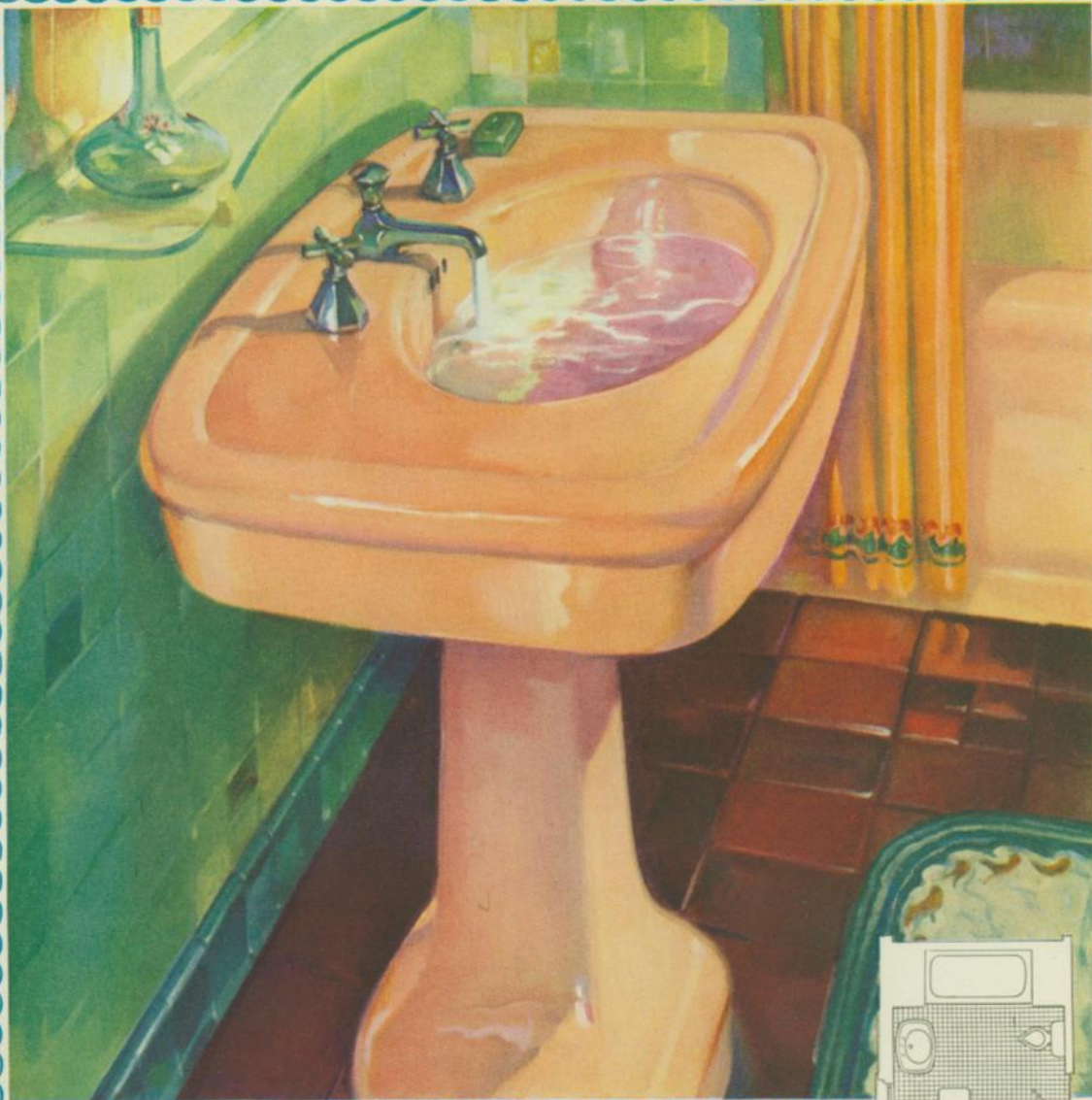


STILL AROUND AFTER ALL THOSE YEARS...

Liberty

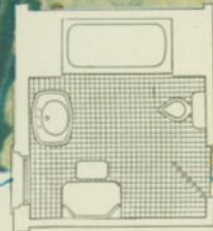
September 22, 1928

A GLIMPSE of the charm of Kohler Colorware—and a revelation of the truth that today is a *new* day in bathroom design; that color-beauty now starts with color in the fixtures themselves...Choose this mellow *autumn brown*; or the delicate old ivory; or blue, gray, lavender, green, or black...And remember, *Color means Kohler*. Write Kohler Co., Kohler, Wis., for their color booklet.



© 1928, Kohler Co.

KOHLER OF KOHLER
Plumbing Fixtures



The Kohler Belmont Lavatory is in autumn brown enamel. Bath, toilet, etc., are furnished in color to harmonize.
"MODERNIZE YOUR HOME"

LOOK FOR THE KOHLER TRADE MARK ON EACH FIXTURE

GRANITEVILLE PARADE
December 7, Graniteville, South Carolina



VINTAGE VISIONS

Anne Neely-Beck

In the Model A era, most people made their clothes, underwear, and pajamas. In the January 1930 Needlecraft there were patterns you could order to make underwear and pajamas.

Pattern 2769 was for the essential slip and could be made for size 16 years and bust sizes 36" to 46". If you wanted to embroider the slip a transfer # 738 was available. Rayon was probably used but cotton would work too.

Pattern 2882 was for tailored undies available in pattern sizes 16 and 18 years and for 36, 38, 40 and 42 bust measurements. These would be made from silk, rayon, or crepe de chine.

Pattern 3064 is a costume slip designed for sizes 16 and 18 years and 36"-42" bust sizes. It is trimmed in 4 ½ yards of lace and this could be made from rayon or cotton.

Pattern 3059 shows dainty pajamas and was designed for sizes 14 to 20 years and 36" to 42" bust size. These were probably made from cotton or rayon.



NUTS & BOLTS

- ♦ Wrap heated bricks in burlap for an inexpensive and authentic Model A "heater". (*Contributed by Keith Lewis*)
- ♦ Keep a couple of magnets on your Model A dash board to secure reminders, maps, and directions.

MAFFI

(MODEL A FORD FOUNDATION, INC)

Anne Neely-Beck

I would like to invite all Shade Tree A members to join MAFFI if you haven't already. I am lucky to be on the Board of Trustees (all volunteers) and have seen and been a part of the making of the wonderful Model A Ford Museum. The museum is ready for everyone to see and it is amazing. This is your museum, Model A fans.

We now want to preserve the museum for future generations so now we need donations for the endowment fund to keep the museum running.

Each Model A club can receive a free brick by enrolling three new MAFFI members. This is a limited offer so let's get busy.

We also have license plate toppers for sale for \$15.00. This was one of my fund raiser ideas and in January I will have 25 to sell to Shade Tree A members. The license plate toppers are stainless steel and laser cut they are really a nice addition for your A.

Let me know how many you want and I will bring them to the January meeting if I have received them in time or to the February meeting.

See you then.

Editor's note: This topper is also advertised in the STA "Classifieds" but ordering in time for Anne to deliver it at the meeting will save you shipping charges.



CENTRAL ALABAMA MODEL A OPPORTUNITIES

The Central Alabama Model "A" Ford Club has 3 activities scheduled for 2014 that are of regional interest the highlight being a visit and seminar by Les Andrews. The following are the planned 2014 activities your members may want to attend.

January 10-11, 2014: Model "A" Ford Seminar & Talk by Les Andrews in Montgomery, Alabama.

Les Andrews, author of three (3) major Model A books, *the Mechanics Handbook Volume, I & II* and *Troubleshooting & Diagnostics* will be the guest speaker at the January meeting in Montgomery, Alabama. There will be a welcome dinner Friday evening (Jan. 10) in downtown Montgomery. At the club meeting on Saturday (Jan. 11), Les Andrews will conduct a Model A Ford seminar in the morning, a talk at lunch, and a book signing.

March 21-22, 2014: Barber Motorsports Park Tour, Oxford & Birmingham, Alabama.

This will be a follow up to the very successful 2013 Talladega Speedway Tour. The club meeting will be two days with a Friday-evening Fireman's dinner at Gerald Grizzard's Model A Museum (Oxford Alabama) and on Saturday a tour of the Barber Motorsports museum including a catered lunch on site in the shop area, and laps on the Speedway. The Barber Motorsports Park is located outside of Birmingham Alabama.

October 16-18, 2014: 8th Annual Sweet Home Alabama Tour, Montgomery & Prattville, AL.

The 8th Annual "Sweet Home Alabama Tour" will be conducted as a hub tour from the Montgomery and Prattville Alabama areas with visits to some attractions in the central part of the state.

For information contact: Paul Majerick Central Alabama Model "A" Ford Club, Activities Director. Telephone (334) 312-3019 email paulmajerick@aol.com

THE CLASSIFIEDS

FOR SALE:

Working Model A generator. \$25.00
Jim McPherson, 706-592-4835.

PARTS FOR SALE:

Two original shock absorbers for 1931 Model A Ford, one front and one rear. Two shock arms, one front and one rear. Ken @ 803-642-4623.

HATS FOR SALE

Navy blue Shade Tree A's hats for \$12.00. See Richard or Frankie.

WANTED

Stories and photos of your Model A projects so you won't have to read about your editor's car every month!

FOR SALE

License Plate Topper



To benefit the Model A Ford Foundation Endowment Fund. \$15.00 plus \$2 for shipping and handling.

Make checks out to:

MAFFI

4532 Merridock Ct

Santa Maria CA 93455

Questions: Jay McCord 805-598-8133

Mike's "A" Ford-able Parts
Mike Butcher

124 Model A Drive, Maysville, GA 30558
email: mike@mikes-afordable.com - www.mikes-afordable.com
Fax: 706 652 2492 - Phone: 706 652 3866
1 888 TRY MIKE (879 6453)

Specialising in 1928 - 1931 Model A Ford Parts

Furniture Doctor, Inc.

SALES/SUPPLIES
3323 Peach Orchard Road
Augusta, Georgia 30906
(706) 798-5951

REFINISHING/RESTORATION
3345 Peach Orchard Road
Augusta, Georgia 30906
(706) 793-0716

www.furnituredoctor.net

K itchens B usiness S olutions	<ul style="list-style-type: none"> • GENERAL ACCOUNTING • INCOME TAX PREPARATION • FINANCIAL & RETIREMENT CONSULTING
	PAM C. KITCHENS Accountant 338 Greene Street Augusta, GA 30901 (706) 823-0007 (706) 823-0009 fax Email: pkitchens@taxcutsrus.net



J.C. Taylor
INSURANCE

50 Years Experience
 Agreed Value Coverage
 Superior Claims Service

1-888-ANTIQUE www.jctaylor.com



Land Planning ~ Consulting Engineering ~ Surveying
 Environmental Services ~ Stormwater Management

OneSource
ENGINEERING, INC.

Joseph L. Holley, P.E., R.L.S.
 Design Engineer

4210 Columbia Road
 Suite 16-A
 Martinez, GA 30907

Ph: (706) 863-8010 Ext.(204)
 Fax: (706) 863-8011
jholley@onesource-eng.com



Goldcross Emergency Medical
 Services, Inc.

1109 Medical Center Drive, Building 4
 Augusta, Georgia 30919

Phone: 706-792-9292 rgoodson@goldcrossems.com
 Fax: 706-792-9250

BRATTONS ANTIQUE AUTO PARTS



1606 BACK ACRE CIRCLE
 MOUNT AIRY, MD 21771
 Order # **800 255-1929**
 Web: brattons.com

FREE 194 page illustrated MODEL A parts catalog
 Catalog contains 3,200 Model A parts with full
 descriptions and Picture of each part.
 Supplying Quality by using over 90% U.S. parts
 Serving the Model A restorer with parts since 1977



"ONE MILE AHEAD"
Smith and Jones
Antique Auto Parts
 60 Wisconsin St., W. Columbia, SC 29170
 803/822-4141 FAX 803/822-8477

Quality Parts
 Same Day Shipping
 Established 1972
 142 Page Catalog
 Order Desk 800-422-1928

 www.snjparts.com

**SUSAN
 MELOAN**



JACKETS, SHIRTS, & VESTS
 For Shade Tree A's Club Members
 Digitally Controlled Machine Embroidery Services
 803-634-2570 snmeloan@gmail.com

The World's Largest Selection of 1909-31 Ford Parts

Snyder's
ANTIQUA AUTO PARTS

12925 Woodworth Rd. • New Springfield, OH 44443
 Toll Free Ordering (888) 262-5712
 or FAX (888) 262-5713
 Order On-Line @ www.snydersantiqueauto.com

 **FREE Fully Illustrated CATALOG**
 \$10.00 outside the U.S., Canada, & Mexico