

## Shade Tree A's News

### A SPECIAL BOND

Rachel d'Entremont

There's something about old cars, and for us in the STA's, especially Model A's, that helps to form a special bond between people. I wonder if years from now people will have the same nostalgia for cars built in the last 40 years as they do for those built before 1970; I doubt it.

Since I brought home my Model A in January 2009, I have spent many, many hours in the garage with my son, Brian, working on the car. Mostly I assisted while he did most of the work. Every time he comes back to Aiken to visit, I can count on spending one-to-one time with him as he tweaks this or that.

I had that same type of bond with my Dad, David Wilson, who peacefully died in his sleep February 19. When I was in college, Dad turned a pile of rusted metal back into a sleek 1968 Chrysler 300, my first car. Dad drove a 1968 Chrysler Imperial in the summer and a 1968 New Yorker during the winter (to keep his Imperial off the salty roads); all were revived from extensive rust. Dad

really loved those '68 Chryslers. When I came home to visit (even in the dead of winter in Central New York), Dad had me out in the garage changing the oil or tuning up the car. As with Brian, mostly Dad worked while I mostly assisted. Almost every phone conversation with Dad since the late 1970's included the question "so how's the car running?"

During Dad's last year, we spent a lot of time looking at old cars in museums, at "cruise-ins", on the internet, and in car books. Those old cars brought back memories of his childhood, his coming of age, college, time in the service, and his time raising a family. They jogged memories long forgotten, and when his declining short-term memory made conversation about the present difficult, provided topics for hours of conversation about the past.

I see that same special bond between generations of families in our club; it's something to cherish.

### ABOUT THE SHADE TREE A'S

<http://www.shadetreeas.org>

The Shade Tree A's is a non-profit organization dedicated to the preservation and the restoration of the Model A Ford automobile. Shade Tree A's annual dues (\$65) include membership in the Model A Ford Club of America (MAFCA, \$40) and a subscription to *The Restorer* Magazine. Members are also urged to join the Model "A" Restorers Club (MARC, \$38) which includes a subscription to *Model "A" News*. The club also is a member of MAFFI, the Model "A" Ford Foundation, Inc.

### ABOUT THIS NEWSLETTER

© 2014 Shade Tree A's, except as noted. Please contact Rachel d'Entremont (Newsletter@ShadeTreeAs.org) concerning reprinting of articles, illustrations, or photos.

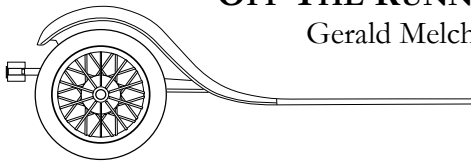


*Brian & Dad bonding in May 2009*

Sketch 1930 Model A Tudor Sedan  
Steven Brown

## OFF THE RUNNING BOARD

Gerald Melchior, President



Wow, we certainly have had a wild February! Starting with an ice storm of epic proportions and power outages ranging from a couple of days to almost a week, we were topped off with an earthquake. What a week! Lois and I were without power, relying on kerosene lanterns for light and the fireplace for heat for four days. A good way to get exercise though, running out to the wood pile every little while to stock-up the wood box.

Fortunately, with five acres of forest surrounding my house and shop, and with my yard looking like a disaster area, outside of needing a massive cleanup we had no real damage. Wednesday night, listening to all the trees crash and fall I had some concern but my Model A and other cars and sheds weren't hurt at all. There were an awful lot of near misses but outside of a small dent in my pickup, nothing else got hit.

On Saturday morning, following all that, Lois and I were scheduled to fly to Connecticut to visit our daughter and her family. Part of the invitation (left unsaid) might have been that they were in process of some major remodeling and had some doors that needed to be installed. Of course we arrived in the middle of a blizzard and it snowed almost the whole time we were there. The heavy, fresh snow was certainly pretty but as we rode along in my daughter's new 4-wheel drive SUV with electronic traction control, etc., I couldn't but help but remember how, as a young boy living in Wisconsin in the 50's, I sometimes rode to school in our family Model A. In the wintertime it seems that our "newer" cars would often fail to start when it got *really* cold or would get stuck in the deep snow. That 28 A Model would start no matter how cold it got and with the high ground clearance and good balance did very well in snow also. Of course us kids may have looked funny with my 2 brothers and sister all hovering around the front seat trying to get closer to the manifold heater outlet in a vain effort to get warm. Those were the

days!

We certainly had a good turnout for our Valentine's Sweetheart Pancake Breakfast but it didn't work out as planned. While quite a few members drove their Model A's and it was a beautiful day, it seems that most of the population of the southeast all wanted to eat at that particular Cracker Barrel restaurant at the same time as we did. Unfortunately, management had to cancel our reservations for the back room and we had to take general seating. Next year we will look at some other options.

After our next regular Saturday club meeting on March 8<sup>th</sup>, Ernie Dinkins has re-scheduled the club to tour with our Model A's to visit Jack Shepard's shop. Jack has a marvelous collection of memorabilia and much of it is housed and displayed in a beautiful historic building that he has restored for that purpose. It is only about a 20 minute drive from Richard's and Saturday morning's traffic is usually light so be sure to drive your Model A.

Greg Jones and Dan Perla continue to look into schedules and times to see if an overnight tour centered around a Newberry Opera House performance would work for our club. Tentatively, we would like to schedule that event for some time in May but that is not yet firm. We should have more details at the meeting. If you have any ideas, or would like to help with planning, talk with Greg or Dan.

Greg Jones also has some exciting news about our upcoming technical programs and will outline them at our next meeting. While our club's recent technical programs have been very helpful and interesting, this series promises to be above average so be sure to attend.

The Shade Tree A's is your club. It is only with your input and support that our club can remain responsive to your interest as a Model A enthusiast.

See you at the March 8<sup>th</sup> meeting. Remember... "A busy Model A is a happy Model A" so bring your Model A!!!

*Gerald Melchior*

## MARC DRIVING AWARDS PROGRAM

Robbie Jones has volunteered to be the Shade Tree A's MARC Driving Awards Program coordinator.

If you are currently registered in the program, your mileage has not been updated since about 2010. If you want to continue participating in the program, please send Robbie your mileage as of December 31, 2013 to

[drivingawards@shadetreeas.org](mailto:drivingawards@shadetreeas.org)

If you are a member of MARC and have never registered for the program and would like to participate, contact Robbie at the email address above for a registration card.

A one-time registration fee of \$1.00 is required and the program is open to all MARC members. The first award is given at 2,000 miles and every 5,000 miles thereafter. Mileage does not have to be earned all in one year and can accumulate from year to year. Additional information on the program can be found on the MARC website at:

[www.modelaford.org/drivingawards.htm](http://www.modelaford.org/drivingawards.htm)

## ALL THE NEWS THAT'S FIT TO PRINT

If the newsletter seems a little skimpy this month it's because I received very little in the way of contributions.

## NEWS LETTER ON THE WEB

If you can't find your newsletter or it doesn't show up in your e-mail, it is available, along with past newsletters, at [www.ShadeTreeAs.org](http://www.ShadeTreeAs.org).

## YOUR MODEL A PROJECT PHOTOS

Dan Perla, webmaster, is asking members to provide photos for the Photo Collection. He's suggesting a new section for photos covering the restoration process of individual cars. He also has a section with photos of members' cars which is very much out of date.

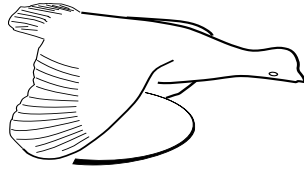
Dan needs your help so get out your cameras and send your pictures to Dan .

## CONTACT INFO

Mailing Address:

Shade Tree A's Model A Club  
4424 Reynolds Street  
Hephzibah GA 30815-7909

Gerald Melchior President	(706) 294 5065 <a href="mailto:pres@ShadeTreeAs.org">pres@ShadeTreeAs.org</a>
Greg Jones Vice President	720-272-7907 <a href="mailto:vp@ShadeTreeAs.org">vp@ShadeTreeAs.org</a>
Don Cerefin Secretary	803-644-4437 <a href="mailto:sec@ShadeTreeAs.org">sec@ShadeTreeAs.org</a>
Richard Dunevent Treasurer	706-339-8167 <a href="mailto:treas@ShadeTreeAs.org">treas@ShadeTreeAs.org</a>
Walker Crosby National Director	803-645-7316 <a href="mailto:nationaldir@ShadeTreeAs.org">nationaldir@ShadeTreeAs.org</a>
Tom Roberts—Board and Membership Coordinator	803-649-0054 <a href="mailto:membership@shadetreeas.org">membership@shadetreeas.org</a>
Doug Wilson Board of Directors	706-533-4377 <a href="mailto:bod1@ShadeTreeAs.org">bod1@ShadeTreeAs.org</a>
Rachel d'Entremont Newsletter	<a href="mailto:newsletter@ShadeTreeAs.org">newsletter@ShadeTreeAs.org</a>
Sheila McPherson Photographer	706-592-4835 <a href="mailto:photogpher@ShadeTreeAs.org">photogpher@ShadeTreeAs.org</a>
Frankie Dunevent Shady A Ladies	706-863-6758 <a href="mailto:bodliaison@ShadeTreeAs.org">bodliaison@ShadeTreeAs.org</a>
Anne Neely-Beck Era Fashions	478-945-3736 <a href="mailto:erafashions@ShadeTreeAs.org">erafashions@ShadeTreeAs.org</a>
Dan Perla Webmaster	706-855-5730 <a href="mailto:webmaster@ShadeTreeAs.org">webmaster@ShadeTreeAs.org</a>



## LOOKING AHEAD

### CLUB EVENTS

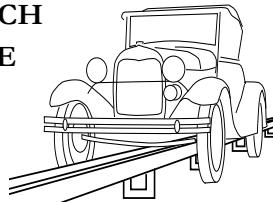
- March 8 –10am Meeting
- March 17– St. Patrick's Day Parade
- April 12– 10 am Meeting
- April 26– Boshears Airshow Display

### OTHER EVENTS

- Mar. 21&22-Barber Motorsports Park Tour, AL
- Mar. 22-Palmetto A's Picnic in the Park
- April 5– Central Alabama Swap Meet
- April 25 & 26– Greenwood Swap Meet
- August 9 –Swap meet at the Cofer Collection
- Oct.16&18 -Sweet Home Alabama Tour

### FROM THE MARCH ASSEMBLY LINE

- Brion Frontroth
- 2- Cheryl Jordan
- 10 – Georgia Cunningham
- 12 - Don Cerefin
- 15 - Rosalind Neal
- 20 - Dan Perla
- 23 – Charles Jordan
- 25 - Curtis Krosting
- 28 - Pat Hughes
- 29 - Doug Wilson



### CENTRAL ALABAMA MODEL A OPPORTUNITIES

Paul Majerick

The Central Alabama Model "A" Ford Club has 3 activities scheduled for 2014 that are of regional interest the highlight being a visit and seminar by Les Andrews. The following are the planned 2014 activities your members may want to attend.

March 21-22, 2014: Barber Motorsports Park Tour, Oxford & Birmingham, Alabama.

This will be a follow up to the very successful 2013 Talladega Speedway Tour. The club meeting will be two days with a Friday-evening Fireman's dinner at Gerald Grizzard's Model A Museum (Oxford Alabama) and on Saturday a tour of the Barber Motorsports museum including a catered lunch on site in the shop area, and laps on the Speedway. The Barber Motorsports Park is located outside of Birmingham Alabama.

October 16-18, 2014: 8<sup>th</sup> Annual Sweet Home Alabama Tour, Montgomery & Prattville, AL.

The 8<sup>th</sup> Annual "Sweet Home Alabama Tour" will be conducted as a hub tour from the Montgomery and Prattville Alabama areas with visits to some attractions in the central part of the state.

For information contact: Paul Majerick Central Alabama Model "A" Ford Club, Activities Director. Telephone (334) 312-3019 email [paulmajerick@aol.com](mailto:paulmajerick@aol.com)

### REFRESHMENTS

**February:** Cracker Barrel after meeting  
**March:** McMullin, Stewart, & Krosting  
**April:** TBA

### NEWS FROM UNDER THE SHADE TREE

If you have news to share, let me know at [newsletter@ShadeTreeAs.org](mailto:newsletter@ShadeTreeAs.org)

- ♦ Anne Neely-Beck is recovering from surgery
- ♦ David S. Wilson, father of member Rachel d'Entremont & grandfather of member Brian d'Entremont died Feb. 19 in Tavares FL.

## BARBER MOTORSPORTS TOUR

Jim McPherson

Several of us have driven our Model A's on a super speedway, speedways, short tracks, and the flat oval Indianapolis Motor Speedway. Now we have the opportunity to drive our Model A's on a road course at the Barber Motorsports Complex. At the Barber Motorsports Complex, we will tour their museum containing over 1200 vintage and modern motorcycles and the world's largest collection of 42 Lotus race cars, eat lunch in their restoration shop, and drive our Model A's on their 2.38 mile road course containing 17 turns. The Central Alabama Model 'A' Ford Club has arranged this tour. We thoroughly enjoyed their tour last year to the Talladega Superspeedway, and we don't want to miss this tour.

A group of us are planning on attending. We will trailer our Model A's to Oxford, Alabama, departing on Thursday morning March 20th. We will stop for breakfast along the way. On Friday, I am working on arranging a tour to see the Model A and Model A accessory collection of Roy Frost. Roy has a fine collection of Model A's, mostly 1931 models, which includes a very rare 1931 Town Car Delivery, and the last Model A built, by Ford Motor Company in 1940 for Edsel Ford. This Model A has a Ford built Jeepster type body. You will not want to miss the "Firehouse Dinner" with entertainment by the Blue Grass Buddies at Gerald Grizzard's Model A Museum Friday night. On Saturday we will visit the Barber Motorsports Complex. You may return home Saturday evening or Sunday morning. Please call Jim McPherson (706-592-4835) for additional information.

## MEETING MINUTES

*February 8, 2014*

President Gerald Melchior called the meeting to order at 10am. Two members were fined for lack of name badges. Two visitors were welcomed to the meeting.

There were 46 members and spouses present, augmenting the usual number since members and wives would caravan to a local restaurant at conclusion of the meeting to celebrate Valentine's Day.

See the newsletter for February birthdays. George Gordon was honored as the eldest...he's 83 years young this month.

Eric Shogren was formerly recognized as recipient of the Monroe Wade Award for the tremendous amount of assistance he has given in terms of time and effort in assisting fellow Model A'ers. A warm discussion followed as others related how Eric's years of unselfish sharing of his time and knowledge has a common thread among lovers of this hobby.

Richard Dunevent gave the treasurers report.

Robbie Jones needs responses by the end of the month from anyone reporting mileage for the MARC Mileage Awards Program. Call him at 706-860-2758 or e-mail [robandleta@comcast.net](mailto:robandleta@comcast.net) with your numbers or questions regarding the program.

Other old business and past events can be found in the newsletter.

Nine more people are needed for refreshment duty between May and November. Please volunteer so we can close this item out at the March meeting.

Technical program: Greg Jones described the care, use, adjustment, and importance of maintaining the 0.025 spark gap for the ignition system rotor.

The refreshment table was decorated in a lovely Valentine's Day theme by Sheila McPherson who also brewed coffee. Eric Shogren supplied copious fresh donuts. Thanks thoughtful people.

Meeting adjourned for a caravan to the breakfast with spouses...but that's another story.

Respectfully submitted,

Don Cerefin, Secretary



## GILMORE UPDATE

John LaVoy

A swap meet is planned for Model A Day IV at Gilmore on Sept 20. This will be the first Model A swap meet held in conjunction with Model A Day, and it is hoped that this will grow into one of the largest events of this kind. There will also be museum viewing, seminars and other events during that third weekend in September.

License plate topper and bumper sticker sales continue to excite Model A'ers from coast to coast. If you have not seen one or ordered yours, go to our website [www.Maffi.org/Promotions](http://www.Maffi.org/Promotions).

Several clubs have taken advantage of Maffi's free brick promotion. We welcome 36 new members and ordered walkway bricks for: Henry's As, Sullivan Trail, Wisconsin Chapter, East Side, Grape Country, Smokey Mts, Dusty Wheels, River Cities, Calumet Region, Naper A's, Gold Coast and the Grand A's.

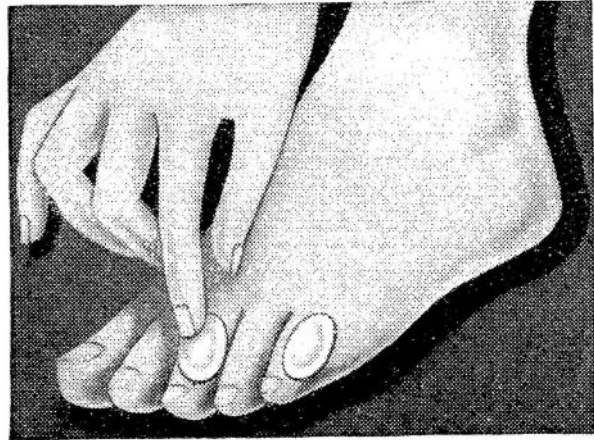
The Museum and Endowment Funds continue to welcome donations, large and small. In addition to monetary gifts, people continue to give rare and valuable items to increase the quality and completeness of our displays. In the Fall, Bill Edstrom donated the two vehicles that he had loaned to the Museum, a 31 Pickup and a 30 Fordor Sedan. In January, Jon Bowers donated the 1930 Roadster he previously loaned to the Museum. All these items serve to make the Museum a more complete collection for the enjoyment of the Model A community.

Hope to see many of you at the museum soon!

Yours truly,  
John LaVoy  
Vice President  
Model A Ford Foundation Inc.  
[vicepresident@maffi.org](mailto:vicepresident@maffi.org)

## STILL AROUND AFTER ALL THOSE YEARS...

# CORNS



## INSTANT SAFE RELIEF!

Dr. Scholl's Zino-pads end pain of corns and sore toes in one minute with absolute safety and surety. They remove the cause — friction and pressure of shoes. Their soothing medication is quickly healing. Small, thin, dainty, protective. At Drug, Shoe, Dept. Stores—35¢ box.

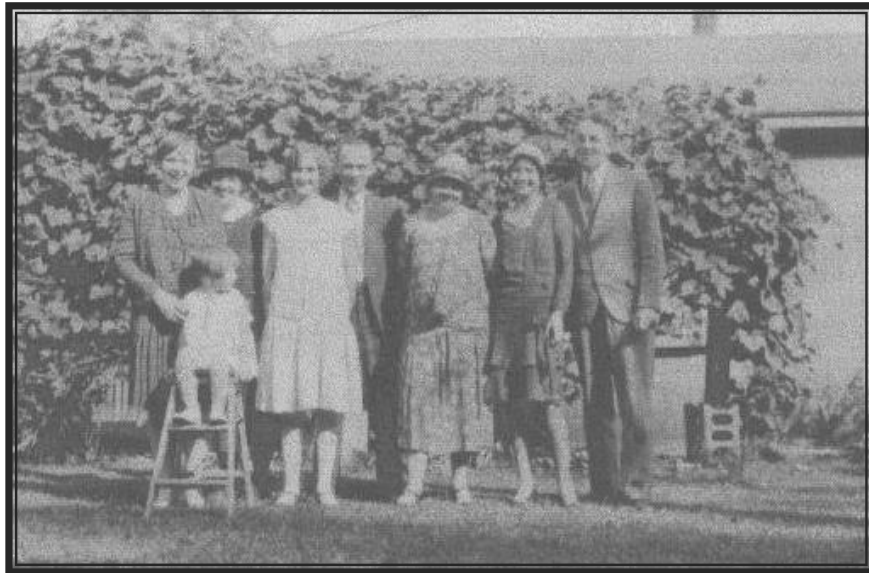
# Dr. Scholl's Zino-pads

*Put one on—the pain is gone!*

*April 1931 Liberty Magazine*

## VINTAGE VISIONS

Anne Neely-Beck



1919

1766

1903

1891

In the *Delineator* March 1928 edition there were several patterns for young girls called *Frocks for Parties, School, and Play*. The girls of the Model A Era wore their dresses short as shown by a picture of my mother and her family taken in 1929.

Pattern 1919 is designed for the 6 to 10 year old. A yoke follows the neckline and forms the brief sleeves of the straight frock with a band of similar outline.

Pattern 1766 is designed for the 2 to 6 year old. It is a printed frock with a square neckline, puffed sleeves, patch pockets and a straight hemline.

Pattern 1903 is designed for the 2 to 6 year old. The vest insert is very chic in this little frock with a yoke and straight lower edge. This is a great school dress.

Pattern 1891 is designed for the 6 to 10 year old. A handkerchief bertha takes the place of sleeves on this frock with long body and pointed lower edge. This is a perfect party dress.



**FEBRUARY MEETING AND VALENTINE'S DAY BREAKFAST***February 8*



## 6th ANNUAL MODEL A FORD PARTS SWAP MEET



\*GA. CHAPTER M.A.F.C.A.\*  
P.O. BOX 5, LILBURN GA 30047  
CONTACT: ROB POWELL - 770-925-8076  
[powell131418@bellsouth.net](mailto:powell131418@bellsouth.net)



BUICK  
CADILLAC  
CHRYSLER  
CORD  
DUESENBERG  
FORD  
HUPMOBILE  
PACKARD



AT COFER's

*Stable of Thoroughbreds*

Automobiles with a Pedigree

3702 LAWRENCEVILLE HWY  
TUCKER, GA 30084  
OFFICE: 770.938.6439  
[www.thecofercollection.com](http://www.thecofercollection.com)

LASALLE  
LINCOLN  
MARMON  
MITCHELL  
MOTORCYCLES  
NASH  
OLDSMOBILE  
PIERCE-ARROW

**ONE DAY - SATURDAY, AUGUST 9<sup>th</sup>, 2014**  
**8 A.M. To 3 P.M.**

-----  
FREE PUBLIC ADMISSION!

VENDORS

PLEASE RETURN THIS FORM BEFORE JULY 31, 2014 TO RESERVE YOUR SPACE.  
VENDORS WILL BE ACCEPTED AT THE GATE AS SPACE PERMITS.

VENDOR SPACES ARE 10'X30' AND WILL ACCOMMODATE A TRUCK OR CAR,  
ALONG WITH A TABLE OR TENT. No BIG RIGS PLEASE!  
PARKING WILL BE AVAILABLE OFF SITE, FOR LARGER TRUCKS OR TRAILERS.  
SPACES COST ONLY \$20.00

\_\_\_\_\_  
(NAME)

\_\_\_\_\_  
(ADDRESS)

\_\_\_\_\_  
(PHONE NUMBER)

\_\_\_\_\_  
(EMAIL ADDRESS)

MAIL THIS FORM ALONG WITH A CHECK OR MONEY ORDER  
PAYABLE TO: GA CHAPTER M.A.F.C.A.  
P.O. BOX 5,  
LILBURN, GA 30047





19th Annual  
 "Picnic in the Park"  
 Saluda Shoals Park\* Redbud Shelter  
 Saturday, March 22, 2014  
 10:00 - 3:30 (lunch at noon)

**\*\*Bring a picnic + some to share and drinks for your family\*\***

- \* RIVERFRONT TRAILS: 1.5 miles of paved trail is available (pets on leash)
- \* COVERED PICNIC SHELTER: with tables for a relaxed lunch
- \* RESTROOMS: permanent indoor facilities within walking distance of shelter
- \* PARKING: paved with room enough for car games (with prizes)

**WHY NOT COME EARLY AND STAY ALL DAY**

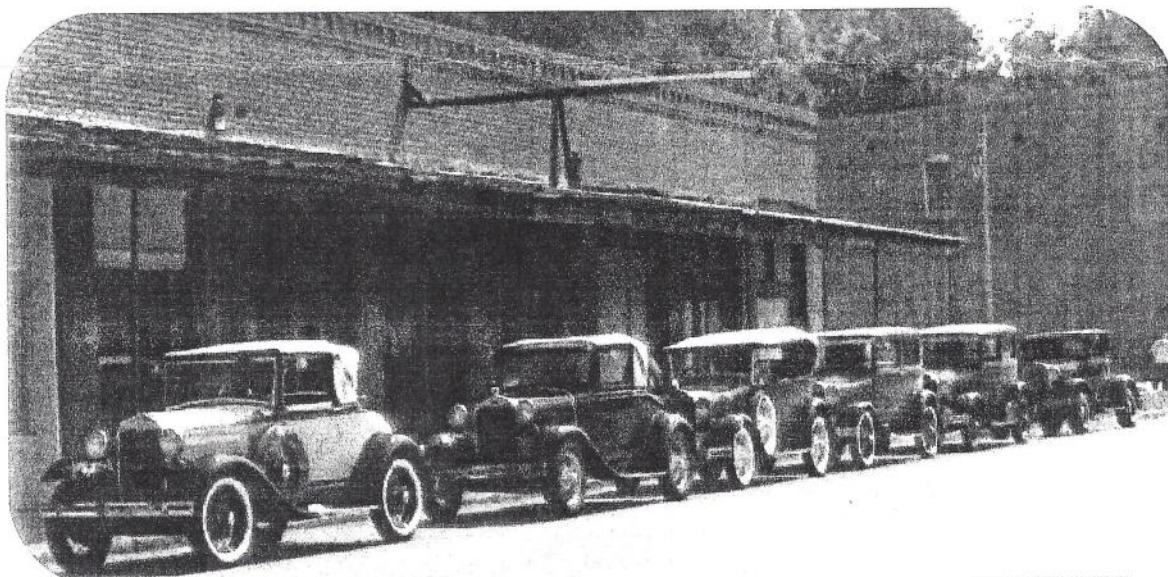
Entry to the park is FREE; just say you're with the Model A Club

\* Saluda Shoals Park is located on Old Bush River Rd., between  
 St. Andrews Rd. and Highway 6 in Lexington County.

For more information email [happybegg@sc.rr.com](mailto:happybegg@sc.rr.com) or [daustin002@sc.rr.com](mailto:daustin002@sc.rr.com)

**9<sup>th</sup> Annual  
All Model A Parts Swap Meet  
Old 96 District Model A Club  
Greenwood, SC**

**April 25 & 26, 2014  
Friday 8:00 am to 5:00 pm  
Saturday 8:00 am to 3:00 pm**



**Model A Display Area  
Admission \$2.00 per adult  
Car Corral \$10.00 for both days  
Vendor space \$25.00 pre-registration  
\$30.00 at the gate  
Lunch available 11-2  
Door Prizes & 50/50 drawing daily**

**Location: 314 Old Mount Mariah Rd. Greenwood, SC on Rt. 221 between Rt. 25 and Rt. 225**

29646

**INFORMATION: Warren Reynolds 864-388-0203 or Ralph Roub 864-992-3230**



THE CENTRAL ALABAMA MODEL "A" FORD CLUB  
MODEL A FORD SWAP MEET

*April 5, 2014*  
Paul Majerick

The Central Alabama Model "A" Ford Club will sponsor a swap meet Saturday April 5, 2014 hosted by Lester and Joann Hall at their home in Pike Road (Near Montgomery AL). Model Aer's will be able to set up and sell Model "A" parts and automotive related items, and for the ladies those items that might be fun or interesting that they have to sell or trade. If your members reserve a flea market space they should bring tables, chairs and a tent if you have one. The Central Alabama Model "A" Ford Club will provide grilled Hamburgers & Hot dogs with all the fixings during the meeting. Make sure to send your information form to Paul Majerick letting him know you are coming so we will have enough food and flea market space available. This will be a great time to kick some tires, buy some parts, or sell some of your "Stuff" that you have been storing in your garage, work shop or basement for years. Come on out for this laid-back, people friendly, "ole" time Central Alabama Model "A" Ford Club get together. You may just find that part you have been looking for, or an item you just can't do without. BRING YOUR LAWN CHAIRS.

RAIN SCHEDULE

In the event of rain the swap meet will be moved to the next weekend and rescheduled for April 12, 2014. The decision to reschedule will be made Thursday April 10, 2014 based on weather reports and attendees will be notified via email. Call or email Paul Majerick if you have weather questions at (334) 312-3029 or email paulmajerick@aol.com

MOTEL

Comfort Inn & Suites, 10015 Chantilly Parkway, Montgomery, Alabama 36117, the motel is 4.5 miles from Lester's home. Rates: King \$89, Senior rate \$76, Twin \$89, Senior rate \$80. The motel offers a free deluxe continental breakfast.

DIRECTIONS TO LESTER'S HOUSE:

From I-85: Take Exit 11 (Mytelene exit), take Chantilly parkway to the last road on your right before your get to Vaughn. Turn right and enter the back entrance to Lester's.

From Troy Highway: Take Taylor Road towards I-85/North 271. Follow Taylor Road to Vaughn Road (Cecil & Union Springs – South 110 turn). Turn right onto Vaughn Road (look for Flips) and Lester's house is located approx 4.2 miles down Vaughn road. As you travel on Vaughn Road you will pass the Wynlakes subdivision on the left as the 4 lane turns into a two lane road, continue 2 1/2 miles, look for Lester & Jo Ann's drive way on the left.

For information and registration: Paul Majerick - paulmajerick@aol.com



## THE CLASSIFIEDS

### FOR SALE:

Working Model A generator. \$25.00  
Jim McPherson, 706-592-4835.

### PARTS FOR SALE:

Two original shock absorbers for 1931 Model A Ford, one front and one rear. Two shock arms, one front and one rear. Ken @ 803-642-4623.

### HATS FOR SALE

Navy blue Shade Tree A's hats for \$12.00. See Richard or Frankie.

### WANTED

Stories and photos of your Model A projects so you won't have to read about your editor's car every month!

### FOR SALE

License Plate Topper



To benefit the Model A Ford Foundation Endowment Fund. \$15.00 plus \$2 for shipping and handling.

Make checks out to:

MAFFI

4532 Merridock Ct

Santa Maria CA 93455

Questions: Jay McCord 805-598-8133

## GoldCross

Emergency Medical Services, Inc.

1109 Medical Center Drive, Building 4  
Augusta, Georgia 30919

Phone: 706-792-9292      rgoodson@goldcrossemss.com  
Fax: 706-792-9250

### BRATTONS ANTIQUE AUTO PARTS



1606 BACK ACRE CIRCLE  
MOUNT AIRY, MD 21771

Order # **800 255-1929**

Web: **brattons.com**

FREE 194 page illustrated MODEL A parts catalog  
Catalog contains 3,200 Model A parts with full  
descriptions and Picture of each part.

Supplying **Quality** by using over 90% U.S. parts  
Serving the Model A restorer with parts since 1977

**"ONE MILE AHEAD"**  
*Smith and Jones*  
**Antique Auto Parts**  
 60 Wisconsin St., W. Columbia, SC 29170  
 803/822-4141 FAX 803/822-8477



Quality Parts  
 Same Day Shipping  
 Established 1972  
 142 Page Catalog  
 Order Desk 800-422-1928

 [www.snjparts.com](http://www.snjparts.com)

SUSAN  
 MELOAN



JACKETS, SHIRTS, & VESTS

For Shade Tree A's Club Members

Digitally Controlled Machine Embroidery Services

803-634-2570

[snmeloan@gmail.com](mailto:snmeloan@gmail.com)

**The World's Largest Selection of 1909-31 Ford Parts**

**Snyder's**  
**ANTIQUE AUTO PARTS**

12925 Woodworth Rd. • New Springfield, OH 44443  
 Toll Free Ordering (888) 262-5712  
 or FAX (888) 262-5713  
 Order On-Line @ [www.snydersantiqueauto.com](http://www.snydersantiqueauto.com)

 **FREE Fully Illustrated CATALOG**  
 \$10.00 outside the U.S., Canada, & Mexico

**Kitchens**  
**Business**  
**Solutions**

- GENERAL ACCOUNTING
- INCOME TAX PREPARATION
- FINANCIAL & RETIREMENT CONSULTING

**PAM C. KITCHENS**  
 Accountant

338 Greene Street  
 Augusta, GA 30901  
 (706) 823-0007  
 (706) 823-0009 fax  
 Email: [pkitchens@taxcutsrus.net](mailto:pkitchens@taxcutsrus.net)

**J.C. Taylor**  
 INSURANCE

50 Years Experience  
 Agreed Value Coverage  
 Superior Claims Service

1-888-ANTIQUE [www.jctaylor.com](http://www.jctaylor.com)

 Land Planning ~ Consulting Engineering ~ Surveying  
 Environmental Services ~ Stormwater Management

**OneSource**  
 ENGINEERING, INC.

Joseph L. Holley, P.E., R.L.S.  
 Design Engineer

4210 Columbia Road  
 Suite 16-A  
 Martinez, GA 30907

Ph: (706) 863-8010 Ext.(204)  
 Fax: (706) 863-8011  
[jholley@onesource-eng.com](mailto:jholley@onesource-eng.com)

 **Furniture Doctor, Inc.**

**SALES/SUPPLIES**  
 3323 Peach Orchard Road  
 Augusta, Georgia 30906  
 (706) 798-5951

**REFINISHING/RESTORATION**  
 3345 Peach Orchard Road  
 Augusta, Georgia 30906  
 (706) 793-0716  
[www.furnituredoctor.net](http://www.furnituredoctor.net)

**Mike's "A" Ford-able Parts**  
**Mike Butcher** 

124 Model A Drive, Maysville, GA 30558  
 email: [mike@mikes-afordable.com](mailto:mike@mikes-afordable.com) - [www.mikes-afordable.com](http://www.mikes-afordable.com)  
 Fax: 706 652 2492 - Phone: 706 652 3866  
 1 888 TRY MIKE (879 6453)

 *Specialising in 1928 - 1931 Model A Ford Parts*