

SHADE TREE A'S

NEWSLETTER

March 2021

Volume 48

Number 3



President Matt Barrett	706-799-3699 pres@ShadeTreeAs.org
Vice President Dan Perla	706-855-5730 vp@ShadeTreeAs.org
Secretary Frank Knapp	706-736-5238 sec@ShadeTreeAs.org
Treasurer Stuart Smith	706-825-9441 treas@ShadeTreeAs.org
Tour Director Charles Weaver	706-373-9422 tourdir@ShadeTreeAs.org
National Director OPEN	nationaldir@ShadeTreeAs.org
Board of Directors Richard Dunevent	706-339-8167 bod1@ShadeTreeAs.org
Board of Directors Darrell Henderson	706-863-1673 bod2@ShadeTreeAs.org
Membership Coordinator OPEN	membership@ShadeTreeAs.org
Newsletter Editor Robbie Jones	706-860-2758 newsletter@ShadeTreeAs.org
Photographer Sheila McPherson	706-592-4835 photographer@ShadeTreeAs.org
Era Fashions Anne Neely-Beck	478-945-3736 erafashions@ShadeTreeAs.org
Webmaster Dan Perla	706-855-5730 webmaster@ShadeTreeAs.org



CONTENTS

Columns	
Off the Running Board	3
Meeting Minutes	3
Looking Ahead	
Club Calendar	4
Refreshments	4
Birthdays	4
Announcements	
Shade Tree A's Member News	5
Other Sundry Announcements	5
Fun Stuff	7
The Shade Tree A's - Thirty Years Ago	8
Technical Topics	9
Advertisements	11

On the Front Cover

The Shade Tree A's enjoy dining, shopping and relaxing on the square in Edgefield, South Carolina on International Model A Ford Day in 2019. Make plans to join fellow Shade Tree A's members on a similar tour back to Edgefield on March 6, 2021.

SHADE TREE A'S MODEL A CLUB



The Shade Tree A's Model A Club is a non-profit organization dedicated to the preservation and the restoration of the Model A Ford automobile. Shade Tree A's annual dues are only \$25. Members are urged to join the Model A Ford Club of America (MAFCA, \$50 annual dues) and the Model A Restorer's Club (MARC, \$45 annual dues) to enjoy the benefits of these national organizations including their respective magazines: *The Restorer* (MAFCA) and *Model A News* (MARC). The Shade Tree A's club is also a member of MAFFI, the Model "A" Ford Foundation, Inc.



CONTACT INFORMATION
 4424 Reynolds Street
 Hephzibah GA 30815-7909
 Website: <http://www.ShadeTreeAs.org>
 Facebook: Shade Tree A's Model A Ford Club

ABOUT THIS NEWSLETTER
 © 2021 Shade Tree A's, except as noted.
 Please contact Robbie Jones at Newsletter@ShadeTreeAs.org concerning reprinting of articles, illustrations, or photos.

OFF THE RUNNING BOARD

Matt Barrett - President

Often we are told that someone has "some good news and some bad news". Today is one of those days. The bad news: According to Robbie Jones there will NOT be a St Patrick's Day Parade this year. The good news: Our own Doug Wilson will make history as the only person to be appointed the Augusta, GA Grand Parade Marshal three years in a row because of the COVID 19 pandemic.

Now the REALLY good news: We are having a "Follow the Quail" tour to Edgefield, SC on Saturday, March 6th if weather permits. If it is raining, we will go the following Saturday, March 13th. We will meet at the Food Lion on Belair Road at 10:00 a.m. We will travel from there to Appling, GA and then on to Pollards Corner. We'll cross the Clarks Hill Dam to SC Highway 28, taking 28 to Plum Branch, SC and then to Downtown Edgefield, SC where we have parking spaces reserved for our group. Even if you don't have your A running, please show up in your "modern" vehicle. We could possibly have some attendees from far and wide. Dale Gosa from Jacksonville, FL is scheduled to attend as well as several Model A enthusiasts from Savannah, GA. This could be our best tour yet!!!

Craig McMullin says there is a good restaurant just down the road in Johnston, SC called the Triangle that can accommodate our entire group. There are also several choices in Edgefield. I recommend that we make a decision as to where we'd like to eat BEFORE WE LEAVE Augusta. Once we are all gathered at Food Lion we'll take a vote. That way we can call ahead and reserve the private room at the Triangle IF that should be our choice.

The Aiken Club members as well as the Columbia, SC club members have also been invited to join our tour. Hopefully, some members will attend.

We are still feeling the impact of the COVID 19 pandemic and need to be as careful as possible in order to keep our members safe. PLEASE, PLEASE wear a mask and socially distance on our outing. These tours are our only way to get together socially right now. PLEASE let's keep those masks on and keep our distances so we can continue to have our tours.

Hoping to see you on Saturday March 6th 🚗🚗🚗

Your President,
Matt Barrett

MEETING MINUTES

Due to the COVID-19 pandemic and associated social distancing requirements, the February 2021 meeting of the Shade Tree A's was cancelled; therefore, there are no meeting minutes.

MONTHLY MEETING TIME & LOCATION

Meetings are normally held on the second Monday of each month at Richard Dunevent's garage, 4338 Owens Road, Evans, Georgia. Meetings begin at 7:00 PM and are followed by refreshments.

Due to the COVID-19 pandemic, meetings have been cancelled until further notice.

LOOKING AHEAD

Club Calendar

March

8 Shade Tree A's Meeting, 7:00 PM, Richard's garage
(Technical Program - TBA) - **Subject to cancellation**

April

8-10 Charlotte Autofair (**Cancelled - The AACA National Meet, held in conjunction with the Autofair, is still planned**)

12 Shade Tree A's Meeting, 7:00 PM, Richard's garage
(Technical Program - TBA) - **Subject to cancellation**

16-17 Old 96 District Model A Ford Club swap meet

May

10 Shade Tree A's Meeting, 7:00 PM, Richard's garage
(Technical Program - TBA) - **Subject to cancellation**

TBA - To Be Announced

March Refreshments



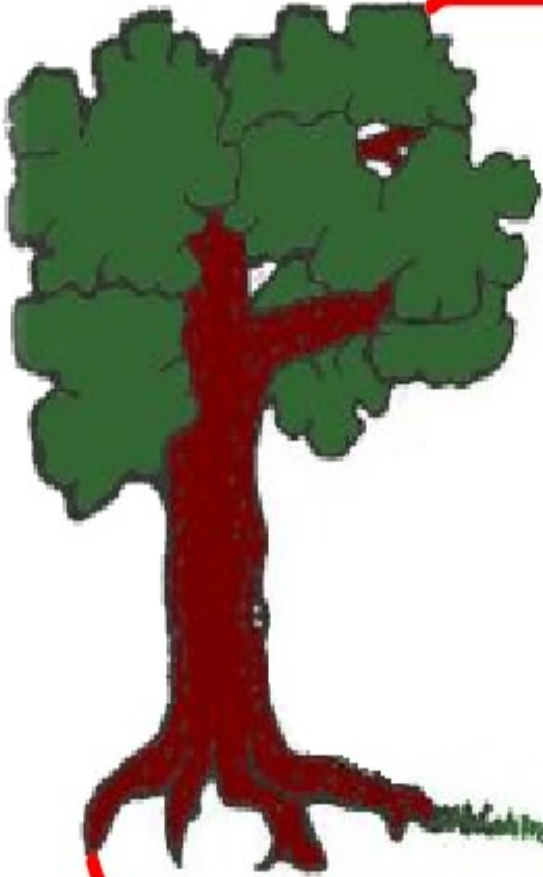
MEETING CANCELLED

March Birthdays



- 3 Caitlin Martin
- 20 Dan Perla
- 21 Darrell Henderson
- 25 Curtis Krosting
- 29 Doug Wilson

ANNOUNCEMENTS



Shade Tree A's Member News

Send items for Shade Tree A's Member News to:
newsletter@ShadeTreeAs.org

Monthly Technical Program

Got an idea for a technical program for presentation at a monthly meeting?

Got a topic you would like discussed during a monthly technical program?

Do you want to volunteer to present a technical program?

If so, contact Dan Perla at vp@ShadeTreeAs.org

It doesn't hurt to think ahead to the day when we can meet again. In the meantime, is there a technical topic that could be addressed on one of our tours?

ANNOUNCEMENTS

Mark Your Calendar

The Model A Ford Foundation is excited and anticipating Model A Day at their beautiful museum in Hickory Corners, Michigan. The First Responder vehicles are still on display, thanks to the generosity of their lenders. A great turnout is expected so make plans now to attend.



Annual Model A Day

Swap Meet

**Fashion, Seminars,
Food and Fun!**

September 17th & 18th 2021 9-5pm

The Gilmore Car Museum
6865 W. Hickory Road
Hickory Corners, MI 49060

SAVE THE DATE

For more Info 269-615-3719 Jerry Morrissey
For Seminar Information Ken Ehrenhofer 630-697-3906
For Swap Reservations Mark Maron 847-302-7900

Model A Ford Museum
Supporter

MODEL A FORD
1928 1931
FOUNDATION INC.

FUN STUFF

Word Search

P G W E C C N E W V F F K O A T I E T B
 E A K P L M Z K W D P G A P D I K C W J
 D D D W O W R P X E M A F C A L M F N A
 W X I U S E O Y B R I G G S Z L U M B A
 A D S S E U U L Q V K B K I W I R M F H
 J B Y U D H Q M F X I D U U W T R O L K
 M A F C C C K N Y W G C Q C B S A D E I
 P F V D A X V N C R H M T R U O Y E A A
 X I L E B L Z C A E U I M O V N G L T J
 P V B T P R E R B E R M S V R Y Q A H N
 K V L U I L N P R O D A B T Q I X H E T
 H E I D C C I H I S R S A L L Y A B R F
 E E N O K C T A O S P H E T E E J B B O
 N M D R U E H E L R R E O L R S I F A R
 R H B A P D C T E C L P K T F U E B C D
 Y M A T M B X O T X S X T M A O C A K O
 F A C O U P E N K D D P B A T J R K T R
 O R K G Q X Y L Q U A I L F Y D P D G K
 R C R O A D S T E R B R A F K O F H X E
 D S T O W N C A R R H M I I C U E W Z F

- | | | | |
|-------------------|-------------|--------------|------------|
| Closed Cab Pickup | Leatherback | Wolf Whistle | Cabriolet |
| Blind Back | Henry Ford | Tillitson | Edsel Ford |
| Victoria | Rumble Seat | Roadster | AA Truck |
| Zenith | Murray | Briggs | Fordor |
| Town Car | Model A | Quail | MAFCA |
| Coupe | MAFFI | Phaeton | Tudor |
| MARC | | | |

THE SHADE TREE A'S – THIRTY YEARS AGO



The 1985-2005 *Shade Tree A's Newsletters* are now available on the Shade Tree A's website. They can be accessed via the same "button" as the other *Newsletters*, but they are password protected. The same password used to access the member roster is used to access the *Newsletters*. Thank you Dan Perla for scanning these and posting on the website.

The March 1991 issue of the *Shade Tree A's Newsletter* announced that Craig McMullin was a visitor at the February 1991 meeting of the Shade Tree A's and was now (i.e. March 1991) a member. Planning for the spring Shade Tree A's tour to Savannah, Georgia was also mentioned. The cover of the Newsletter featured a picture of a Kellogg's Rise Krispies cereal box. Why, you ask, because Rice Krispies were introduced the same year as the Model A Ford in 1927. It was reported that Kellogg's commemorated that event by producing a nostalgic type box with a special feature - a Matchbox Model A Ford "Rice Krispies" truck available to order! Also included in the Newsletter was a tale of a Model A running the Mille Miglia and an engineering analysis of automotive cooling systems with a focus on Model A and flathead Ford V8 engines. Be sure to check it out on the Shade Tree A's website.



TECHNICAL TOPICS

Jim's Tech Tip by Jim Cannon

Towing Your Model A on a Trailer



There will be times when you need to transport your Model A on a trailer. Here's a tip on trailer loading to help you tow safely.

When the car is loaded on the trailer, the tongue weight of the trailer on the trailer hitch (on the back of your car or truck) should be between 10-15% of the total weight of the combined "trailer+Model A". If you load the trailer with less than 10% of the weight on the hitch, the trailer will sway as the speed increases, which is very dangerous. Over 15% can put too much unnecessary load on the back of your tow vehicle, which can take weight off of your front wheels (needed for steering and braking) – which is also not good.

How do you know the weight of your "trailer+Model A"? I took my car on the trailer to my local feed store where they have a scale. Many truck stops also have scales. I parked the loaded trailer on the scale, disconnected my truck, and moved the truck off the scale. They charge a small fee to give you the weight. Once I had that total weight, it was easy to calculate 10% and 15% of that. For example, if your "trailer+Model A" is 4,200 pounds, your Target Tongue Weight is 420 to 630 pounds, call it 525.

Once you know the Target Tongue Weight that you are shooting for, how do you know what the actual tongue weight is when you put the Model A on the trailer? You can figure it out with a ruler or tape measure. Go to a building supply store (like Home Depot) with your tow vehicle and no trailer. Measure and record the distance between the bottom of the trailer hitch and the ground. Now start loading 80# bags of dry concrete mix into your car trunk or truck bed until you have loaded your Target Tongue Weight. (I had a helpful young guy at HD load them in for me.) The exact load is not critical, but it must be above your 10% number. Now measure and record the distance between the bottom of the trailer hitch and the ground again. Once you have those 2 numbers, you can ask the helpful lad at the store to unload all those bags and put them back! Thankfully, you only have to do this exercise one time.

With these 2 measurements, before and after the load was added, you can quickly figure out the change in height above the ground when you have your Target Tongue Weight on the back of your tow vehicle. This CHANGE in the height of your trailer hitch is the HITCH DROP that you need to get when you load your Model A on the trailer. Before attaching the trailer to your tow vehicle in the future, measure the height of the trailer hitch above the ground. Now attach the trailer and load your Model A on it. Pull the Model A forward on the trailer until your trailer hitch has dropped by your Target Hitch Drop. You can roll the Model A forward and backward a bit on the trailer to get the amount of drop that you are shooting for. Now tie the Model A down in this position on the trailer and be confident that you have enough, but not too much, tongue weight on your trailer hitch.

I have marked on my trailer the best spot to load a Model A to get the target tongue weight and hitch drop. When I put them on the mark, the tongue weight is correct.

For more tips on safe towing, check out the following web site: <https://www.curtmfg.com/towing-safety>

Let's be careful out there, and Have a Model A Day!

Jim Cannon



TECHNICAL TOPICS

Re-Engineering the Model A Engine

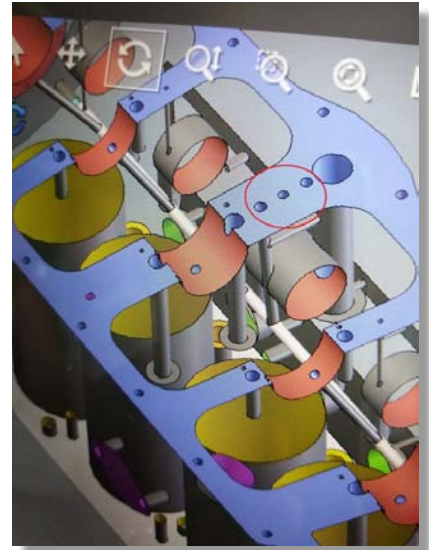
February 1, 2021 Update

If you're not aware, Terry Burtz is remanufacturing the Model A engine to include modern updates for reliability and durability. Information is available on Terry's website at the following address:

www.modelaengine.com

The website includes engineering details, all of the previous updates, pictures, videos, the latest "Builders Guide" and articles on "Doubling the Flow Area of a Model A Oil Pump" and "Installing an Oil Filter".

The February 2021 update reported on the status and schedule for the new Model A engine kit (Cylinder Block, Crankshaft, and Connecting Rods). Parts were expected near the end of January 2021, but are running about four weeks late. The engine components are being manufactured in China. The engine factory in China is huge and has multiple machining lines. They recently received an order for 10,000 Mitsubishi engines. These engines will be manufactured on a line that has multiple special machines in series that is a modern version of the machining line seen in movies from the Ford archives. Since Terry's order is small, it has lower priority and is being manufactured on a line using CNC machines. The good news is that the factory will maintain the same Quality Assurance standards whether the order is big or small. The bad news is that the requested quantity will not be met. After the production order was placed in October 2020, there has been an energy shortage in China, the factory where the flywheels are being manufactured is completely shut down because of a new Covid outbreak, and there is a shortage of shipping containers. The new engine kits being shipped to the United States will be delivered to the container yard on February 9th.



Member Advertisements

Deadline for submittal – 20th of the month – Send submittals to newsletter@ShadeTreeAs.org

- Original Model A Instruction Books (Owner’s Manual). Prices based on condition, \$25 to \$195. Don Turley, Call 706-863-4867, leave a message and I will return your call. Or email don@donturley.com
- Model A Tudor for sale. Contact Grant Cassem (Aiken A's) at: gcassem@mastercraftawards.com

- Engine stand: free to a good home.
- Luggage rack: some rust, some repair needed, paint and have a functional rack for touring, \$50
- Denman whitewall tires: 4.75/5.00 x 19, old but still in paper wrapping, quantity of two, \$25 each
- Robbie Jones



Paid Advertisements

SHADE TREE A'S NEWSLETTER SPONSORS

Our thanks to the following sponsors! Their generosity supports this Newsletter and the Shade Tree A's! Please remember these folks when you need a service they offer. And please, tell them you appreciate their support of our Club!

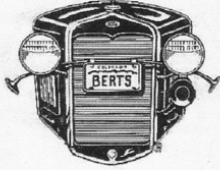
Bentley's
Antique Auto Service, Inc.

We are a Full Service Shop, specializing in Model A Fords

We offer Award-Winning Paint and Bodywork
Expert Service and a Complete Machine Shop

Enjoy the Drive...

678-407-1947



Bert's Model "A" Ford Center

2767 S. Tejon, Englewood, CO 80110
ph# 303-293-3673 or 800-321-1931
email address - parts@modelastore.com
www.modelastore.com

We buy and sell original and reproduction Model A Ford parts!

BRATTON'S
ANTIQUÉ AUTO PARTS



800-255-1929 Phone
www.brattons.com
800-774-1930 Fax
1506 Back Acre Circle
Mount Airy, MD 21771

Your source for Quality Model A Ford Parts since 1976

FAIRWAY FORD IS YOUR
BEST PRICED FORD DEALER

706-854-9200 | FairwayFordAugusta.com



FAIRWAY
FORD | EVANS GEORGIA

POWDERCOATING
 Professional Powdercoating Service
JAPW Racing Inc.
 200 Rose Street Jimmy Rivers
 Martinez, GA 30907 706-863-1206
 info@jrpwrcing.net

Mike's "A" Ford-able Parts
Mike Butcher 
 124 Model A Drive, Maysville, GA 30558
 email: mike@mikes-afordable.com - www.mikes-afordable.com
 Fax: 706 652 2492 - Phone: 706 652 3866
 1 888 TRY MIKE (879 6453)

 Specialising in 1928 - 1931 Model A Ford Parts

"ONE MILE AHEAD"
Smith and Jones
Antique Auto Parts
 60 Wisconsin St., W. Columbia, SC 29170
 803/822-4141 FAX 803/822-8477

 Quality Parts
 Same Day Shipping
 Established 1972
 142 Page Catalog
 Order Desk 800-422-1928
 www.snjparts.com

The World's Largest Selection of 1909-31 Ford Parts
Snyder's
ANTIQUE AUTO PARTS
 12925 Woodworth Rd. • New Springfield, OH 44443
 Toll Free Ordering (888) 262-5712
 or FAX (888) 262-5713
 Order On-Line @ www.snydersantiqueauto.com

FREE Fully Illustrated CATALOG
 \$10.00 outside the U.S., Canada, & Mexico

Joseph E. Spires
ATTORNEY-AT-LAW

Ward & Spires, LLC
445 Walker Street
Augusta, Georgia 30901

Phone (706) 724-2640
Facsimile (706) 724-2642
E-mail: Wardspires@aol.com