

# SHADE TREE A'S



## NEWSLETTER



December 2022

Volume 49

Number 12



4424 Reynolds Street  
Hephzibah GA 30815-7909  
Website: <http://www.ShadeTreeAs.org>

<b>President</b> Jim McPherson	706-592-4835 pres@ShadeTreeAs.org
<b>Vice President</b> John Neumar	706-386-2980 vp@ShadeTreeAs.org
<b>Secretary</b> Frank Knapp	706-736-5238 sec@ShadeTreeAs.org
<b>Treasurer</b> Stuart Smith	706-825-9441 treas@ShadeTreeAs.org
<b>Tour Director</b> Charles Weaver	706-373-9422 tourdir@ShadeTreeAs.org
<b>National Director</b> Matt Barrett	706-799-3699 nationaldir@ShadeTreeAs.org
<b>Board of Directors</b> Dan Perla	706-855-5730 bod1@ShadeTreeAs.org
<b>Board of Directors</b> Darrell Henderson	706-863-1673 bod2@ShadeTreeAs.org
<b>Membership Coordinator</b> Frank Knapp	706-736-5238 membership@ShadeTreeAs.org
<b>Newsletter Editor</b> Robbie Jones	706-860-2758 newsletter@ShadeTreeAs.org
<b>Photographer</b> Sheila McPherson	706-592-4835 photographer@ShadeTreeAs.org
<b>Era Fashions</b> Anne Neely-Beck	478-945-3736 erafashions@ShadeTreeAs.org
<b>Webmaster</b> Dan Perla	706-855-5730 webmaster@ShadeTreeAs.org



## CONTENTS

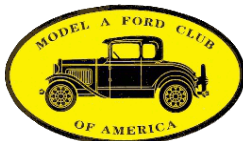
### Columns

Off the Running Board	3
Meeting Minutes	3
Club Calendar	5
<b>Announcements</b>	
Shade Tree A's Member News	6
Refreshment Schedule	6
Birthdays	6
Other Sundry Announcements	7
<b>Recent Events</b>	
Shade Tree A's Technical Session	11
Model A Era Fashion and Style	12
The Shade Tree A's - Thirty Years Ago	15
Technical Topics	16
Advertisements	18

### On the Front Cover

Matt Barrett's Tudor gets checked over by Shade Tree A's members for proper taillight and headlight operation in preparation for an upcoming wedding.

## SHADE TREE A'S MODEL A CLUB



The Shade Tree A's Model A Club is a non-profit organization dedicated to the preservation and the restoration of the Model A Ford automobile. Shade Tree A's annual dues are only \$25. Members are urged to join the Model A Ford Club of America ([www.mafca.com](http://www.mafca.com)) and the Model A Restorer's Club ([www.model-a-ford.org](http://www.model-a-ford.org)) to enjoy the benefits of these national organizations including their respective magazines: *The Restorer* (MAFCA) and *Model A News* (MARC). The Shade Tree A's club is also a member of MAFFI, the Model "A" Ford Foundation, Inc.



#### CONTACT INFORMATION

4424 Reynolds Street  
 Hephzibah GA 30815-7909  
 Website: <http://www.ShadeTreeAs.org>

#### ABOUT THIS NEWSLETTER

© 2022 Shade Tree A's, except as noted.  
 Please contact Robbie Jones at [Newsletter@ShadeTreeAs.org](mailto:Newsletter@ShadeTreeAs.org) concerning reprinting of articles, illustrations, or photos.

## OFF THE RUNNING BOARD

*Jim McPherson - President*

Many of us have read of antique car or car collections being involved in a devastating fire. Club member Henry Jones experienced such a fire and showed and told us of the long term effects such a fire has, and his efforts to correct the damage done. We held our last Technical Session for 2022 at Richard's garage (See photos from the Tech Session later in the *Newsletter*, Ed.). Several members, led by Robbie Jones evaluated, and attempted to correct, an electrical issue with the lights on Matt Barrett's 1930 Tudor Sedan. Robbie Jones was able to correct the electrical problem while manually holding the light switch. However, Robbie was unwilling to ride on Matt's fender that night while Matt drove a wedding party. Another group of members were evaluating the rough running issue with Kathy Poole's 1930 Coupe. We may well see this car in a future Tech Session.

As another year comes to an end for the Shade Tree A's, I would like to thank outgoing officers for their support during 2022. John Neumar as Vice-President, and Dan Perla and Darrell Hendrson as Board members. Your help and assistance was instrumental in providing excellent programs and Tech Sessions this year.

I would like to congratulate Robbie Jones on being awarded the Model A Ford Club of America's Newsletter of the Year for 2022, an award well deserved. It is especially rewarding when others recognize the time and effort put into our Newsletter.

A warm welcome to new members Bob and Sandy Reis. They own a 1929 Leatherback Fordor Sedan and a 1929 Van.

I hope to see each of you at our Christmas Party December 3rd. It will be a very special occasion. And at our annual New Year's Day Breakfast at the Cracker Barrel Restaurant (on I-20) at 8 o'clock.

## MEETING MINUTES

*November 14, 2022*

*Richard's Garage*

*Respectfully submitted: Frank Knapp - Secretary*

The monthly meeting of The Shade Tree A's was held November 14, 2022 in the clubhouse meeting room at Richard Dunevent's garage. President Jim McPherson brought the meeting to order at 6:58 PM and welcomed the thirty-one members and guests in attendance. John Neumar introduced Brandon Carter who is currently looking to buy his first Model A. On their second visit, Robert and Sandra Reis became our latest new members. Welcome guys!

Matt Barrett offered our "Joke of the Month".

Vice President:

John Neumar reminded the group of our upcoming Christmas party.

Treasurer:

Stuart Smith reported only two checks were written last month to cover our recent Swap Meet and Saturday Tech Session expenses. According to Stuart, member dues are starting to drift in but should pick up as the month progresses. A motion was made from the floor to accept the October Minutes and the Treasurer's Report. That motion received a second and was passed by unanimous vote.

National Director:

No report was given.

*Continued on next page*

# MEETING MINUTES

*Continued*

### Newsletter Editor:

Robbie Jones provided a magazine that everyone found very interesting. *Ragtops and Running Boards* is a bimonthly publication that lists Car Show dates and locations across the Southeast. Very informative!

### Show & Tell:

Darrell Henderson brought along a 1910 four cylinder hand crank tire pump made by The Hawthorne Manufacturing



Company that a friend gave him from his late father's collection. Unfortunately, the hand crank was missing, however, Darrell had no problem duplicating the original handle as well as building an impressive display for demonstration. Definitely a very interesting find. Thanks Darrell!



### Tour Director:

Charlie Weaver had nothing new to report.

### Old Business:

Andy Morse gave a report on our recent Swap Meet held at his shop on Saturday, October 22<sup>nd</sup>. According to Andy, eleven vendors arrived to serve shoppers from several surrounding states. Plans are already in the works for next year which will include three swap meets. The Old 96 District Model A Club in Greenwood, SC to hold theirs in the spring, The Palmetto A's at Smith & Jones in summer and STA's in the fall.

Once again President Jim reminded the group our 2023 dues are payable no later than December 31<sup>st</sup>. He also urged all who plan to attend the Christmas Party to contact Dan Perla ASAP. Matt Barrett announced we will have live music at this year's party. A small group of musicians from the Greenbrier High School Band will provide entertainment playing those familiar Christmas Carols during the first hour.

### New Business:

President Jim announced Robbie Jones has won the MAFCA "Newsletter of the Year" award for 2022. Everyone agreed Robbie has done a fantastic job publishing our newsletter and is well deserving of this prestigious award. Congratulations Robbie!

### Technical Program:

All eyes were on Henry Smith as he recalled a fire that damaged his 1973 Ford/Howe fire engine last year. Unfortunately, another vehicle parked alongside his caught fire causing extensive smoke damage. Quite an interesting presentation which included pictures of "before" and "after" the damage. Henry and his crew worked diligently for weeks scrubbing and polishing. Thankfully, their hard work paid off and the old engine looked as good as new. Very interesting! Thanks Henry!

There being no further business, the meeting was adjourned at 7:43 P.M. after which the group enjoyed a "Build Your Own Taco" buffet provided by Darren and Pat Riley, and Kenny Adkins. Well done, Thanks guys!

### MONTHLY MEETING TIME & LOCATION

Meetings are held on the second Monday of each month at Richard Dunevent's garage, 4338 Owens Road, Evans, Georgia. Meetings begin at 7:00 PM and are followed by refreshments.

## CLUB CALENDAR

### *Shade Tree A's Events*

#### December

- 3 Shade Tree A's Christmas Party at Jack Shepard's, 6:00 PM, catered by Wife Saver, Dan Perla is accepting reservations and \$20 payment per person at the Club meeting or by mail (454 Fulcher Dr., Martinez, GA 30907-8766).

#### January 2023

- 1 Shade Tree A's New Year's Day breakfast, Cracker Barrel at I-20 and Belair Road
- 9 Shade Tree A's Meeting, 7:00 PM, Richard's garage (Technical Program - TBA)

#### February 2023

- 1 Shade Tree A's New Year's Day breakfast, Cracker Barrel at I-20 and Belair Road
- 9 Shade Tree A's Meeting, 7:00 PM, Richard's garage (Technical Program - TBA)

#### Every Wednesday at 11:30

Join the Shade Tree A's for lunch at Cicis Pizza on Wheeler Road

*TBA - To Be Announced*

### *Other Events of Interest*

#### December

- 5-8 2022 Model A Ford Club of America National Awards Banquet, Golden, CO

#### January 2023

- 14 38th Annual Model A Winter Swap Meet, Shepherdsville, KY
- 26-28 AACA Winter National Meet, Miami, FL

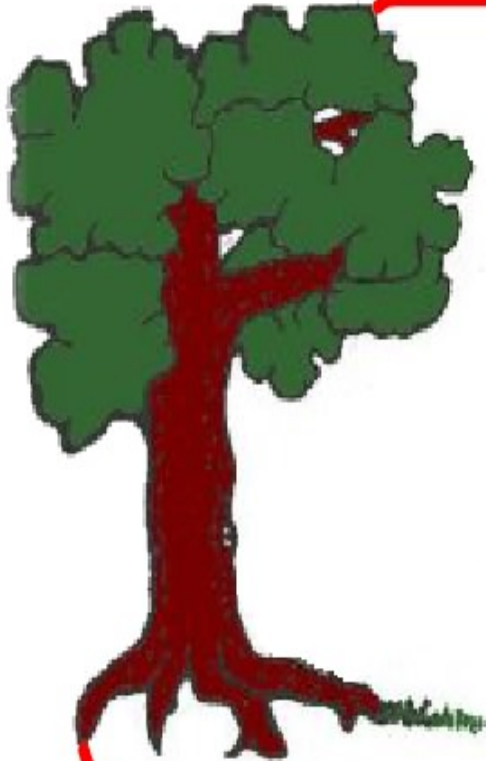
#### April 2023

- 13-15 Charlotte Autofair, Charlotte, NC
- 13-15 AACA Southeastern Spring National Meet, Charlotte. NC
- 14-15 Old 96 District Model A Club Swap Meet, Greenwood, SC

#### May 2023

- 18-20 AACA Eastern Spring National Meet, Gettysburg, PA

# ANNOUNCEMENTS



## Shade Tree A's Member News

Send items for Shade Tree A's Member News to:  
newsletter@ShadeTreeAs.org



### Refreshment Schedule

**December**  
**No Refreshments - Christmas Party**  
**January 2023**  
**Jim and Sheila McPherson, Dan Perla**  
**February 2023**  
**Volunteers needed**



### December Birthdays

- 1 Robbie Jones
- 7 Tonya Gordon
- 7 Joe Holley
- 8 Charles Weaver Sr.
- 11 Kenny Adkins
- 13 Richard Dunevent
- 16 Frank Knapp
- 17 Eric Shogren
- 27 Phyllis Collier

**ANNOUNCEMENTS**

*Shade Tree A's Christmas Party*

**December 3, 2022 at 6:00 PM**

Hopefully you've made your reservations for the Shade Tree A's Christmas Party. This year's party will once again be at Jack Sheppard's Country Store, 539 Chamblin Road, Grovetown, Georgia

If you've never been to Jack's, his place is a real treat and a great place for our Christmas Party.

The Christmas party is early this year, December 3<sup>rd</sup>. Submit your payment to Dan Perla. PLEASE pay with either correct bills or preferably by check. The cost is still \$20 per person. If you wait till the night of the party, you must pay with correct bills or check. Make checks out to the SHADE TREE A's.



**ATTENTION!**

**Shade Tree A's Member Dues**

Shade Tree A's member dues for 2023 are due by the end of the year. Please see the Club Secretary, Stuart Smith to make your payment. Checks or exact cash with your name attached are appreciated.

## ANNOUNCEMENTS

*Model A Ford*  *Club of America*

250 SO. CYPRESS • LA HABRA, CALIFORNIA 90631-5586  
562/697-2712 • 562/697-2737 • FAX 562/690-7452



*The Prez Sez...*

November 2022

As we enter the Fall Season of the year the weather is changing, It is time to think about others. It is a time for holiday festivities and gathering. This is also a time to reach out to the less fortunate around us. In our area, holiday meals are served to the less fortunate and many of the clubs are working on projects to gather warm clothing. Others are collecting toys to brighten the holidays for children. I would hope that our chapters would be involved in these community projects.

I would like to call your attention to MAFCA's social media efforts this year. Our Facebook group has gained 10K members. Michael Eisenbise and Melanie Whittington have spent countless hours to keep our page a safe and fun place to visit. One of our goals has been to welcome anyone who has an interest in the Model A Ford. Rick Black has continued to administer our wonderful website where you can keep up on the daily activities of the club. It has been a big job and our readership continues to grow. Terry Whittington, our Constant Contact Editor assumed the duties this year and has brought some innovative ideas to these monthly newsletters. If you are not receiving the monthly edition of the Flying Quail, please send an email to [Flyingquail@yahoo.com](mailto:Flyingquail@yahoo.com).

My number one goal for this year was to grow MAFCA. I am happy to say that our membership has grown from last year, It is often said that our hobby is dying, I am here to tell you that the Model A Ford hobby is alive and well. We are seeing new members join every day. I realize that some of our chapters are having their problems. The best way to build the club and your chapter is to be sure your meetings are well structured with an agenda, a program, a raffle and of course, refreshments. When your members have fun at meetings, they will want to become more involved and come back. A quality newsletter is another thing that will strengthen your chapter. This communication tool is the lifeblood of an active club.

Our MAFCA Store, [www.mafca.com](http://www.mafca.com), has introduced several exciting new products this year. Our latest edition in the "How to Restore your Model A series is Volume 10. I believe it to be our finest publication to date. We have also added a new, high-quality baseball cap in Navy Blue, and two new Christmas Cards featuring a Budd Cab Truck and a Phaeton. Proceeds from sales help to offset the costs of running the club. I hope you will continue to support the club and make some of your holiday purchases here.

Wishing you all a happy holiday season  
Happy Motoring,  
Jay McCord  
[president@mafca.com](mailto:president@mafca.com).



# ANNOUNCEMENTS

2022 National  
Awards Banquet  
December 5-8  
Golden, Colorado



Join us in beautiful Golden, Colorado at the Table Mountain Inn.

Visit Clear Creek History Park, the Buffalo Bill Museum, the Colorado Railroad Museum, the Coors Brewery, the Rocky Mountain Quilt Museum, and The Clive Cussler Museum.

Something for everyone!



## ANNOUNCEMENTS

### How the 1928-1931 Model A Ford Started the Entire Auto Restoration Hobby

*Story by Robbie Jones*

A recent article by Hemmings (see the link at the end of this article) discussed the impact the Model A Ford had on automotive restoration in the post-World War II period in the United States. According to the article, auto restoration has antecedents in the pre-World War II era, but is most strongly associated with the postwar period. Brass car enthusiasts were already preserving and fixing those machines by the late '30s, but the first thing that most would recognize as the hobby/industry of today really springs out of the post-war do it yourself movement centered on the 1928-1931 Model A Ford. According to the article, there are a variety of reasons for the Model A's popularity during the postwar period:



- the Model A was a sensation when it first came out in late 1927
- a generation of kids grew up watching the cars being held together by resilient adults who learned mechanical skills in the heavily mechanized Second World War
- the abundance of Model A's as used cars

The article states "the historical and continued popularity of the Ford Model A translates to an extremely robust and complete aftermarket supporting these cars on the eve of their centennial. Even in as-delivered form, the Ford Model A remains an eminently driveable car. Married with some improvements developed when it was nearly new, it can traverse virtually any 21st century road with ease."

The entire article can be viewed at the following web address:

<https://www.hemmings.com/stories/model-a-starts-restoration-hobby/>

### Asbestos Exposure

As you probably already know, working on automobiles may expose you to asbestos. The following website contains information on exposure from automotive sources such as brakes, clutches and gaskets. Take the time to explore this information and take precautions to protect your health.

<https://www.asbestos.com/exposure/automobiles/>

RECENT EVENTS

Shade Tree A's Technical Session - November 12, 2022

Photos by Robbie Jones except as noted



Every Shade Tree A's gathering involves food; this Technical Session was no exception! Sheila McPherson prepared hamburgers, hot dogs and the usual fixins for all. Thanks Sheila!



Matt Barrett's car gets the workover in preparation for a nighttime wedding drive.



Robbie Jones accepts the MAFCA Newsletter of the Year Award from Club President Jim McPherson. Photo by Stuart Smith

# MODEL A ERA FASHION AND STYLE

## Ladies Casual and Outdoor Wear in the Model A Era

by Melanie G. Whittington, Almost Heaven A's

The fun of dressing for the Model A era doesn't always have to involve evening gowns with lots of jewelry, matching shoes and purse. We sometimes forget there are many options to consider when dressing for the era. This article is going to focus on what to wear when outdoors. Our mothers, grandmothers and g-grandmothers were tending the garden, hiking, camping and a variety of other activities which took them outside. Think back to the people in your family who were around in 1928-31. If you are lucky enough to have pictures, they are a great reference for your research on what to wear with your Model A.



Figure 2: National Bellas Hess Co. Autumn 1931, Winter 1931-32

Ladies who lived out in the country would spend a considerable amount of time outside hanging up laundry and working in the garden. These activities were a necessity and kept their family fed and clothed. A cotton housedress and apron are a staple to start a wardrobe which focuses on comfort and utility. These dresses could also be worn on a picnic or a trip into town. Work-weight hosiery were commonly worn with these house dresses. These stockings would be heavier cotton, wool or silk, worn with a low-heeled leather shoe.

Another option is bib overalls with a mannish long-sleeved, button up shirt with oxford style shoes, boots or even barefoot. This may have been reserved for very rural areas and not necessarily seen if you 'went into town', but it is still an option to wear while enjoying your Model A. This is also a great alternative for children and young girls with a short-sleeved cotton shirt. A dark wash blue jean fabric is what we usually think of, but they came in lighter blue, dark blue with white stripes, white (for painters) and various other colors. The fabric was usually heavy-duty denim or a duck/canvas to withstand the rigors of working or playing outside.



Figure 1: National Bellas Hess, Spring and Summer 1931

A dress I never knew existed in our era is the house frock with a divided skirt. Though we rarely hear about it, it was common enough to be included in the catalogues of the day, such as Sears, Montgomery Ward and National Bellas Hess. These dresses used a skirt with a seam in the middle to turn them into wide-legged pants. This gave the feminine look of a skirt, but the practicality of a pair of trousers. These dresses were made of printed cotton. The ad says, "for use around the house or to the market". This shows these were considered appropriate to be worn outside of the home.



Figure 3: late 1920's, girl in bib overalls

# MODEL A ERA FASHION AND STYLE



Figure 5: Charles Williams Stores, 1928

Camping with portable campers, pulled behind an automobile, became popular after the turn of the century. Ladies took to wearing knickers and jodhpurs for ease of movement and modesty as they camped, cooked and hiked across the country. These could be made of wool tweed, half wool tweed, cotton tweed, corduroy, whipcord, linen, or khaki. "Practically all the world wears the Knicker nowadays": Montgomery Ward and Co. Spring and Summer 1928.



Figure 4: late 1920s, lady camping



In pictures of the Model A era, you will see lots of ladies in tall leather boots. Red Wing introduced their first ladies' hiking boot, the Gloria, in 1926, complete with a 'compact pocket' to keep your powder compact safe. Pictured is one of the original ads for the same boot. Red Wing is reintroducing this boot as part of their Heritage Collection and can be purchased today. Also available were canvas shoes similar to today's Keds. In the 1931 Montgomery Ward's catalogue, they are available in brown, black or white canvas.



Figure 6: Montgomery Ward 1931

Wool or leather leggings, known as puttees, were used and had been since WWI by the American and Allied troops. Originals are getting harder to come by, but reproduction puttees are still available. Puttees



Figure 7: Sears, Roebuck and Co., Fall and Winter 1931-32

could be used with short boots or oxford style shoes. Pictured is an ad referencing 'Uncle Sam's Wrap Style'. "Regulation army style wrap or spiral puttees, same style as worn by U.S. solders. Made of olive drab cloth. Worn by men, women, boys and girls."

Also pictured, is me in one of my favorite hiking outfits using reproduction puttees. This is one of the most comfortable outfits I have for the Model A era. I have tall cotton socks under the leg wraps, no garters needed, an era image cotton button up shirt, a vintage scarf and vintage brown velvet beret. If it's cold you can wear cotton or wool long underwear, which can be purchased from stores like Tractor Supply or Vermont Country Store.



## MODEL A ERA FASHION AND STYLE

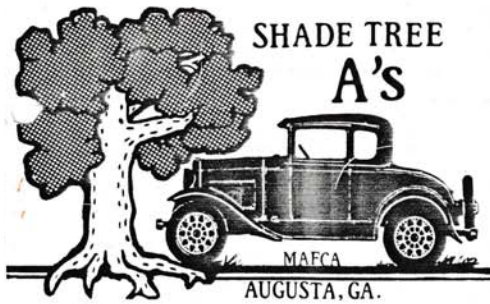
It is easy to get caught up in the belief Hollywood glam was what everyone was wearing and Flappers roamed the streets of every city and town. Just like now, everyday people do not go to the store or work around the house dressed like celebrities. Even on the occasions they did dress up, it was likely never to the extent of what was seen on the silver screen.

There are so many options, you don't have to be uncomfortable, or spend a fortune. My words of advice are to enjoy yourself and find a part of the era fashion you enjoy, and wear it.



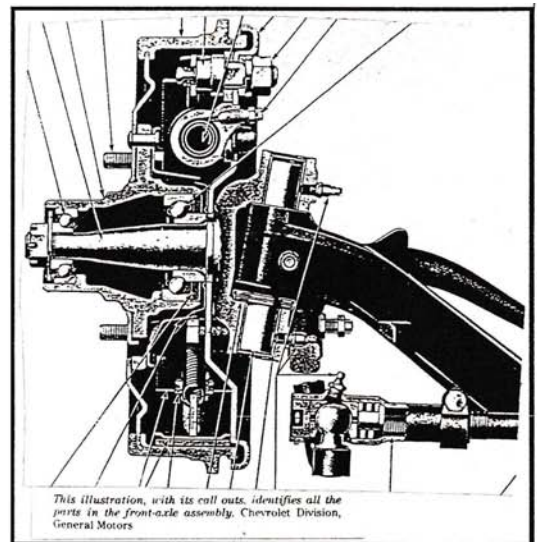
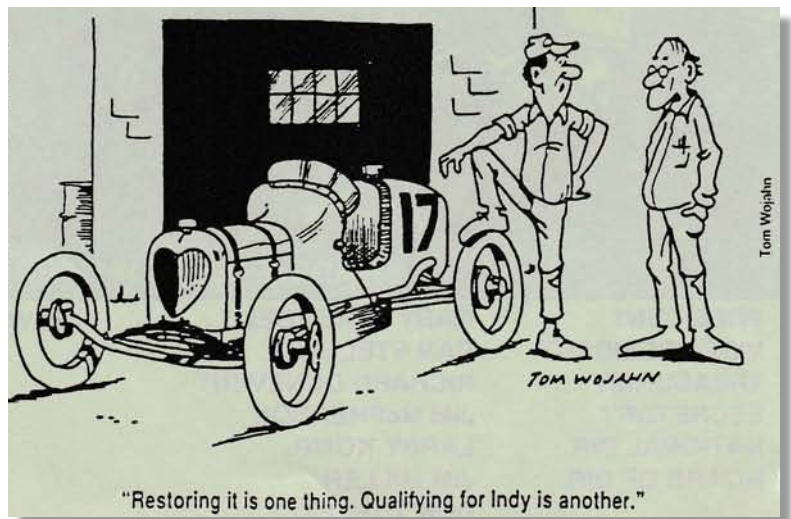
*Figure 8: late 1920s*

# THE SHADE TREE A'S – THIRTY YEARS AGO



The 1985-2005 *Shade Tree A's Newsletters* are now available on the Shade Tree A's website. They can be accessed via the same "button" as the other *Newsletters*, but they are password protected. The same password used to access the member roster is used to access the *Newsletters*. Thank you Dan Perla for scanning these and posting on the website.

The December 1992 issue of the *Shade Tree A's Newsletter* included an "Oh-Fishal" Parade List. Parades noted were Harlem, Gibson, Hephzibah and Thomson. The Club President, Gary Stroebel, recounted the accomplishments for the year in his column: great tours, several restorations completed, a first class Newsletter and Club growth. The origin of the 25¢ fine for not wearing your name badge at Club meetings can be found in the Newsletter too. A review of a very informative book on automotive restoration was provided by Larry Komp. Be forewarned though that the book is specific to, get ready, Chevrolet pickup trucks! According to Larry though, this book is "the best, most comprehensive and well rounded 'how to' manual I have ever run across". The Newsletter also included the second installment of a new column on Authenticity and Troubleshooting by Jim McPherson. An article on "Rattling Ford Jokes" provided some humor to the December *Newsletter*. An extensive Member News highlighted the accomplishments of many Shade Tree A's members.



This illustration, with its call outs, identifies all the parts in the front-axle assembly, Chevrolet Division, General Motors

## TECHNICAL TOPICS

### Jim's Tech Tips

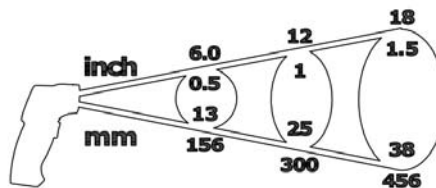
#### "Infrared (IR) Thermometer Guns"

These little IR thermometer guns are amazing. I use mine to check coolant temperature at the outlet of the engine, look for cool spots on radiators, check tire sidewall temperatures, and to see if all of my brake drums are at about the same temperature after a hard brake (to confirm even braking action at each wheel).

If you are going to get a reliable, consistent, and reproducible reading with these guns, you need to understand a bit about how they work. When you aim the gun at something and press the button to read the temperature, the gun reports to you the average temperature of everything within its "Field of View".

#### **Field of View**

The meter's field of view is 12:1, meaning that if the meter is 12 inches from the target, the diameter of the object under test must be at least 1 inch. Other distances are shown in the diagram below. Make sure that the target is larger than the unit's spot size. The smaller the target, the closer you should be to it. When accuracy is critical, make sure the target is at least twice as large as the spot size.



12

If you want to read the temperature with a spot circle diameter of  $\frac{1}{2}$ " (a very handy size), you must hold the gun 6" from the object. I have seen some guys hold the gun several feet from a radiator hose and not understand why the reading is so low; their 3" diameter spot circle includes a lot of cool air on either side of the radiator hose. Get in the habit of holding the gun up close to the object for the best readings.

Some guns have a laser pointer built in that helps you see where the temperature readings are being taken. The laser does not read the temperature, it just helps you see where the reading is from. You have to visualize the spot circle size, depending on how far the gun is from the object.

I hope this helps you get more out of your IR thermometer. If you don't have one, they are handy to have around the shop and on the road.

Until next time, *Have a Model A Day!*

Jim



TECHNICAL TOPICS

Jim McPherson provided the following excerpt from *Automotive Industries*, February 2, 1929 which shows the new Model A Taxicab and Town Car.

*Automotive Industries*  
February 2, 1929

BRITISH PRODUCTION

163

The figures relating both to employment and to wages show increases. The employment totals refer to all those directly employed in the construction and repair of motor vehicles (but not motorcycles), and of parts, accessories, and tires.

Table V  
Employment Totals

Year	Number Employed
1907	34,000
1911	66,000
1921	159,000
1923	194,000
1924	219,000
1925	235,000
1926	241,000
1927	257,000

Employment and wages were adversely affected in 1926 by the general and coal strikes. The average earnings of all skilled and unskilled men have been as follows:

Table VI

Year	Average Earnings Per Employee Per Week	
	s.	d.
1914	40	8
1923	71	10
1924	75	5
1925	78	3
1926	76	4
1927	80	7

The products of the industry have been consistently reduced in price in recent years. In Table VII index figures of the fluctuations in list prices of 12 typical models each of private cars and commercial vehicles are compared with the cost of living index.

In Table VIII the private car and commercial vehicle index figures are corrected by the application of the cost of living index. On a gold basis (i. e., in pre-war money) current prices of private cars and commercial vehicles are 50.1 per cent and 38 per cent respectively below the pre-war level. 1928 includes the first six months.

Table VII  
Index of Nominal Prices

	Private Car Prices	Commercial Vehicle Prices	Index of Cost of Living
1914	100.0	100.0	100.0
1922	135.5	126.2	181.4
1923	116.5	117.7	173.6
1924	99.1	108.9	175.0
1925	98.2	107.6	175.1
1926	92.2	104.2	172.0
1927	88.4	104.2	167.0
1928	82.1	102.0	164.4

Table VIII  
Index of Gold Prices

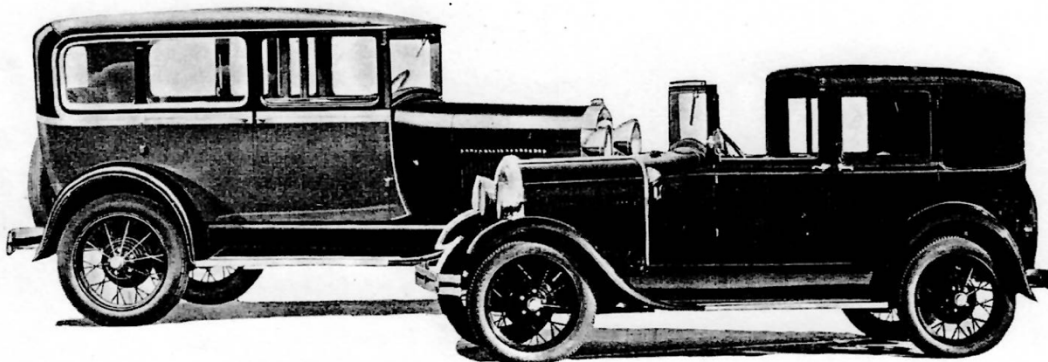
	Private Car Prices	Commercial Vehicle Prices
1914	100.0	100.0
1922	74.8	69.7
1923	67.1	67.8
1924	56.6	62.2
1925	56.1	61.4
1926	53.6	60.6
1927	53.0	62.4
1928	49.9	62.0

The industrial dislocation of 1926 increased the cost of production and of materials. A comparison of the first two columns of Table VII with the fluctuations in Table IX of wholesale prices of materials and the earnings of work people in the motor trade is considered a tribute to the increased efficiency of the British motor industry.

Table IX  
Material Prices and Earnings

	Index of Wholesale Prices of Materials	Index of Earnings in Motor Industry
1914	100	100.0
1922	155	...
1923	161	176.4
1924	166	185.3
1925	155	192.2
1926	144	187.6
1927	135	197.9
1928	135	183.5

Two New Models Recently Added to Ford Line



TWO new models recently added to the Ford Model A line are shown here. The taxicab (left) was placed in production several weeks ago and sells for \$800. It seats four passengers. The other model, the town car, is a chauffeur-driven job and lists at \$1,400

## Member Advertisements

Deadline for submittal – 20<sup>th</sup> of the month – Send submittals to [newsletter@ShadeTreeAs.org](mailto:newsletter@ShadeTreeAs.org)

### FOR SALE

Model A tapered muffler for sale. Has been used but in excellent shape. Painted with black heat paint similar to Aries mufflers. Would be great for a driver. \$145. Contact Dan Perla (706-373-5730) or Jim McPherson (706-564-0120).

### WANTED

I had someone in the Augusta area call me today, looking to purchase a Model A Coupe with a rumble seat. If any of you have one available for sale or know of one that is available for sale, please get in touch with me and I will give you their phone number. This will need to be a good running/drivable car, not something that will need to be restored or extensive repairs. This person is not currently a member of a Model A Club.

Thanks,  
Don Turley

## Paid Advertisements

### SHADE TREE A'S NEWSLETTER SPONSORS


*Our thanks to the following sponsors! Their generosity supports this Newsletter and the Shade Tree A's! Please remember these folks when you need a service they offer. And please, tell them you appreciate their support of our Club!*

**Bentley's**  
Antique Auto Service, Inc.

We are a Full Service Shop, specializing in Model A Fords  
We offer Award-Winning Paint and Bodywork  
Expert Service and a Complete Machine Shop

Enjoy the Drive...

**678-407-1947**



**Bert's Model "A"  
Ford Center**

2767 S. Tejon, Englewood, CO 80110  
ph# 303-293-3673 or 800-321-1931  
email address - parts@modelastore.com  
www.modelastore.com

**We buy and sell original and reproduction Model A Ford parts!**

**BRATTON'S**  
**ANTIQUE AUTO PARTS**



800-255-1929 Phone  
[www.brattons.com](http://www.brattons.com)  
 800-774-1930 Fax  
 1506 Back Acre Circle  
 Mount Airy, MD 21771

*Your source for Quality Model A Ford Parts since 1976*

1003 ALEXANDER DRIVE  
 AUGUSTA, GA 30909

P.O. BOX 212072  
 MARTINEZ, GA 30917

**D&M**   
**D'Antignac & Merritt Heating & Air, Inc.**  
 Turn To The Experts.

(706) 667-0196 Doug Wilson

**FAIRWAY FORD IS YOUR  
 BEST PRICED  
 FORD DEALER**

706-854-9200 | [FairwayFordAugusta.com](http://FairwayFordAugusta.com)



**FAIRWAY**  
 FORD/EVERANS GEORGIA

**POWDERCOATING**  
 Professional Powdercoating Service

**JAPW Racing Inc.**

200 Rose Street  
 Martinez, GA 30907  
[info@jrpwrcing.net](mailto:info@jrpwrcing.net)

Jimmy Rivers  
 706-863-1206

**Mike's "A" Ford-able Parts**  
**Mike Butcher** 

124 Model A Drive, Maysville, GA 30558  
 email: [mike@mikes-afordable.com](mailto:mike@mikes-afordable.com) - [www.mikes-afordable.com](http://www.mikes-afordable.com)  
 Fax: 706 652 2492 - Phone: 706 652 3866  
 1 888 TRY MIKE (879 6453)



*Specialising in 1928 - 1931 Model A Ford Parts*

**"ONE MILE AHEAD"**  
*Smith and Jones*  
 Antique Auto Parts  
 60 Wisconsin St., W. Columbia, SC 29170  
 803/822-4141 FAX 803/822-8477



Quality Parts  
 Same Day Shipping  
 Established 1972  
 142 Page Catalog  
 Order Desk 800-422-1928

 [www.snjparts.com](http://www.snjparts.com)

The World's Largest Selection of 1909-31 Ford Parts

**Snyder's**  
**ANTIQUE AUTO PARTS**

12925 Woodworth Rd. • New Springfield, OH 44443  
 Toll Free Ordering (888) 262-5712  
 or FAX (888) 262-5713  
 Order On-Line @ [www.snydersantiqueauto.com](http://www.snydersantiqueauto.com)



 **FREE Fully Illustrated CATALOG**  
 \$10.00 outside the U.S., Canada, & Mexico

**Joseph E. Spires**  
 ATTORNEY-AT-LAW

Ward & Spires, LLC  
 445 Walker Street  
 Augusta, Georgia 30901

Phone (706) 724-2640  
 Facsimile (706) 724-2642  
 E-mail: [Wardspires@aol.com](mailto:Wardspires@aol.com)