

# SHADE TREE A'S

## NEWSLETTER

July 2022

Volume 49

Number 7



4424 Reynolds Street  
Hephzibah GA 30815-7909  
Website: <http://www.ShadeTreeAs.org>

<b>President</b> Jim McPherson	706-592-4835 pres@ShadeTreeAs.org
<b>Vice President</b> John Neumar	706-386-2980 vp@ShadeTreeAs.org
<b>Secretary</b> Frank Knapp	706-736-5238 sec@ShadeTreeAs.org
<b>Treasurer</b> Stuart Smith	706-825-9441 treas@ShadeTreeAs.org
<b>Tour Director</b> Charles Weaver	706-373-9422 tourdir@ShadeTreeAs.org
<b>National Director</b> Matt Barrett	706-799-3699 nationaldir@ShadeTreeAs.org
<b>Board of Directors</b> Dan Perla	706-855-5730 bod1@ShadeTreeAs.org
<b>Board of Directors</b> Darrell Henderson	706-863-1673 bod2@ShadeTreeAs.org
<b>Membership Coordinator</b> Frank Knapp	706-736-5238 membership@ShadeTreeAs.org
<b>Newsletter Editor</b> Robbie Jones	706-860-2758 newsletter@ShadeTreeAs.org
<b>Photographer</b> Sheila McPherson	706-592-4835 photographer@ShadeTreeAs.org
<b>Era Fashions</b> Anne Neely-Beck	478-945-3736 erafashions@ShadeTreeAs.org
<b>Webmaster</b> Dan Perla	706-855-5730 webmaster@ShadeTreeAs.org

## CONTENTS



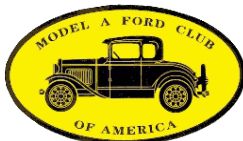
### Columns

Off the Running Board	3
Meeting Minutes	3
Club Calendar	5
Announcements	
Shade Tree A's Member News	6
Refreshment Schedule	6
Birthdays	6
Other Sundry Announcements	7
Message from the MAFCA President	8
News from the MAFFI	9
Recent Events	
Ridge Peach Festival and Parade	10
Model A Restorers Club National Meet - Part 1	10
Model A Restorers Club National Meet - Part 2	12
Smith and Jones Swap Meet	14
Special Interest	15
Model A Era Fashion and Style	16
The Shade Tree A's - Thirty Years Ago	18
Technical Topics	19
Advertisements	21

### On the Front Cover

Shade Tree A's member Don Turley assists in judging tools at the Model A Restores Club National Meet in Morgantown, PA. Photo provided by Don Turley.

## SHADE TREE A'S MODEL A CLUB



The Shade Tree A's Model A Club is a non-profit organization dedicated to the preservation and the restoration of the Model A Ford automobile. Shade Tree A's annual dues are only \$25. Members are urged to join the Model A Ford Club of America ([www.mafca.com](http://www.mafca.com)) and the Model A Restorer's Club ([www.model-a-ford.org](http://www.model-a-ford.org)) to enjoy the benefits of these national organizations including their respective magazines: *The Restorer* (MAFCA) and *Model A News* (MARC). The Shade Tree A's club is also a member of MAFFI, the Model "A" Ford Foundation, Inc.



#### CONTACT INFORMATION

4424 Reynolds Street  
Hephzibah GA 30815-7909  
Website: <http://www.ShadeTreeAs.org>

#### ABOUT THIS NEWSLETTER

© 2022 Shade Tree A's, except as noted.  
Please contact Robbie Jones at [Newsletter@ShadeTreeAs.org](mailto:Newsletter@ShadeTreeAs.org) concerning reprinting of articles, illustrations, or photos.

## OFF THE RUNNING BOARD

*Jim McPherson - President*

At the May meeting, Andrew Morse presented an enlightening program on the restoration of a Model A Coupe. At the July meeting, Robbie Jones will present the program on how he installed seat belts in his slant windshield sedan. Many of us know firsthand how valuable seat belts are in our Model A's when in an accident.

We had three Model A's driven by John Buchanan, Richard Dunevent and Charlie Weaver in the Ridge Peach Festival parade in Trenton, SC, and five couples and their Model A's from the Aiken Model A's join us for lunch following the parade at Park Row Market No. 1 in Edgefield, SC. You missed a good lunch.

On Saturday July 23<sup>rd</sup>, we will have a Tech Session at Richard's garage. We will use a Safety Checklist to identify any issues you may have with your Model A. Each Model A owner will be paired with another Shade A's member to perform the evaluation. We will start at 9:30. Lunch will be served. We return to Sconyer's Bar-B-Que on Thursday August 18<sup>th</sup> for our August meeting. Tour Director Charlie Weaver is planning an August Breakfast and Local Morning Tour. Watch for detail.

**MONTHLY MEETING TIME & LOCATION**  
Meetings are held on the second Monday of each month at Richard Dunevent's garage, 4338 Owens Road, Evans, Georgia. Meetings begin at 7:00 PM and are followed by refreshments.

## MEETING MINUTES

*June 13, 2022*

*Richard's Garage*

*Respectfully submitted: Frank Knapp - Secretary*

The monthly meeting of The Shade Tree A's was held June 13, 2022 in the clubhouse meeting room at Richard Dunevent's garage. President Jim McPherson brought the meeting to order promptly at 7:00 P.M. Seventeen members were in attendance.

Matt Barrett once again provided our "Joke of the Month"

President:

President Jim passed around a new Model A Jigsaw Puzzle available through [beezkneezpuzzles.com](http://beezkneezpuzzles.com) as advertised in *Model A News*.

Vice President:

In the absence of our V.P., John Neumar, Jim reminded the group our next Saturday Tech Session will be held July 23<sup>rd</sup> and will concentrate on "Model A Safety Inspections". He also announced our July meeting program will involve installing seat belts in the Model A.

Treasurer:

Stuart Smith reported (by proxy) only one payment was made during the month of May. A check in the amount of \$100.00 was written to Grace Baptist Church of Evans. Other than that, our Treasury remains unchanged and solvent.

A motion was made from the floor to accept the Treasurer's Report and May Minutes as published in *The Newsletter*. That motion received a second and was passed by unanimous vote.

*Continued on next page*



# MEETING MINUTES

*Continued*

**National Director:**

Matt Barrett reminded members that STA events are now being published in *The Restorer* under Chapter News.

**Newsletter Editor:**

Robbie Jones received compliments for the excellent job he did publishing color pictures of all members who received Anniversary Pins in the last edition of *The Newsletter*. Robbie also invited members to submit photos of their cars for a possible front cover feature picture, "suitable for framing".

**Show & Tell:**

Nothing was offered to "Show", however, Don Turley announced he won quite a nice prize at the MARC National Meet bringing home a set of Goodyear tires for his Model A. Congratulations Don!

**Tour Director:**

Charlie Weaver has been planning a club tour for the 4<sup>th</sup> of July weekend. Details are in the works and will be published in the July newsletter.

**Old Business:**

President Jim reported on our recent tour to The Johnston Peach Festival. Also mentioned were the upcoming Trenton Peach Parade and the Palmetto A's Swap Meet to be held at Smith & Jones June 24<sup>th</sup> & 25<sup>th</sup>.

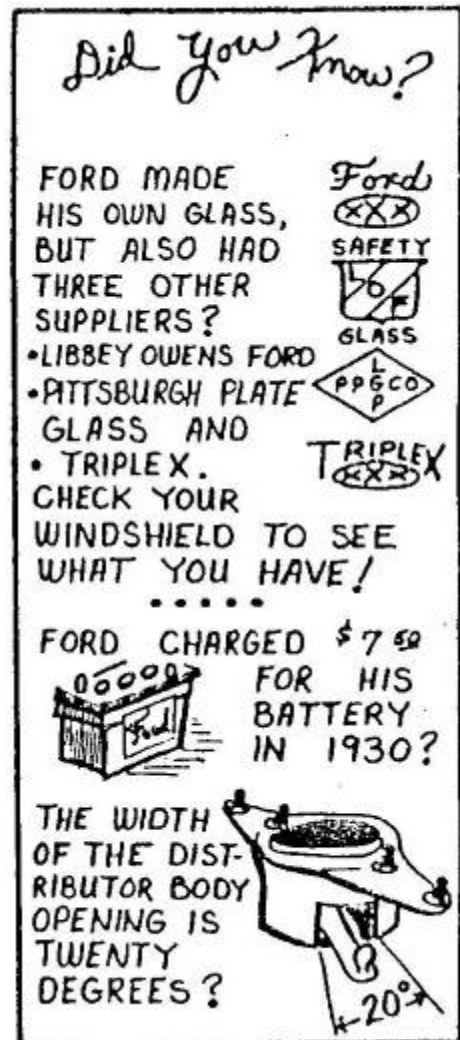
**New Business:**

According to Jim we have been invited to join The Low Country A's and other clubs in our area to meet at Riverbridge State Park in September. Several members indicated an interest in attending.

**Technical Program:**

Andy Morse presented a detailed program on his recent frame-off restoration of a 1931 Coupe for a customer in Aiken. His slide show included some 67 photos of 200 plus taken as the work progressed. Needless to say, everyone was very impressed with Andy's excellent paint and body work. Quite an interesting and informative presentation! Well done, thanks Andrew.

There being no further business, the meeting was adjourned at 7:50 P.M. after which all enjoyed refreshments contributed by Ralph Neitzke and Andrew Morse including a huge platter of chicken wings, chips, cookies and soft drinks. Thanks guys!





CLUB CALENDAR

*Shade Tree A's Events*

July

- 3 Shade Tree A's tour to Bruce Hager's antique car and automobilia collection, depart Richard's at 1:00PM (or meet at the Sprint station in Beech Island or drive directly to Bruce's, 445 Pine Log Road in Beech Island), please notify Jim McPherson (706-564-0120) how many will be in your party for a headcount for pizza lunch
- 11 Shade Tree A's Meeting, 7:00 PM, Richard's garage (*Seat Belts in the Model A Ford Slant Window Sedan*, presented by Robbie Jones)
- 23 Saturday Technical Session, *Safety Inspection of Your Model A*, 9:30 at Richard's garage, lunch will be provided

**CANCELLED**

August

- 18 Shade Tree A's Annual Supper, 6:00 PM, Sconyer's Bar-B-Que
- TBA Breakfast and local morning tour, details provided later

September

- 12 Shade Tree A's Meeting, 7:00 PM, Richard's garage (*TriCo Wiper Motor-Inside and Out*, presented by Dan Perla)
- 17 International Model A Ford Day, the Shade Tree A's will participate in the Polish N Parts Car Show (see below), meetup and driving details later

Every Wednesday at 11:30

Join the Shade Tree A's for lunch at Cicis Pizza on Wheeler Road

*TBA - To Be Announced*

*Other Events of Interest*

June

- 5-10 MARC National Meet, Morgantown, PA
- 12-17 MAFCA National Convention, Kerrville, TX
- 18 Trenton Peach Festival, Trenton, SC
- 18 Journey Community Church Annual Cruise-In, 11:00 AM - 1:00 PM, Evans campus
- 24-25 Palmetto A's Swap Meet at Smith and Jones, Columbia, SC

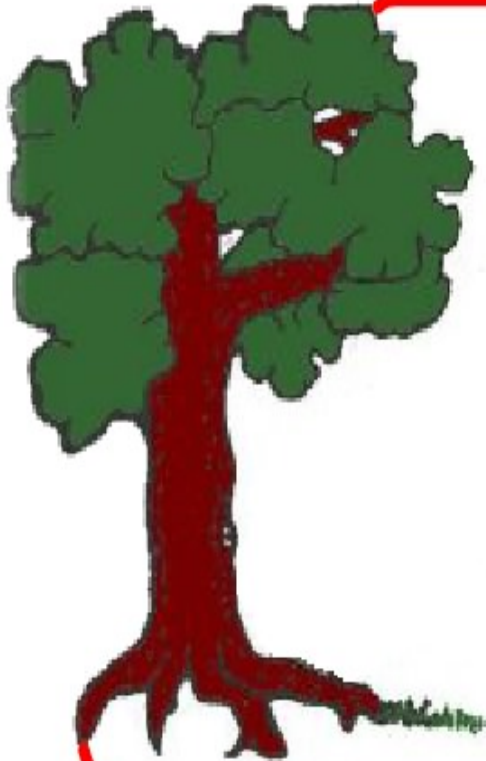
August

- 13 Model A Swap Meet, 112 Wisdomwood Rd, Montgomery, AL. No admission or space fee. Contact: Dennis Leatherwood, 334-669-4006. Hosted by the Central Alabama Model A Club

September

- 24 3rd Annual Model A Yard Sale, 120 Stokes Rd, Greenwood, SC. Hosted by Warren Reynolds
- 17 Polish N Parts Car Show, 9 AM to 3 PM, James Brown Arena 7<sup>th</sup> street parking lot (rain date September 18)

# ANNOUNCEMENTS



## ***Shade Tree A's Member News***

- Misty Hooker is recovering from surgery. Please keep her in your thoughts and prayers for a speedy recovery.

*Send items for Shade Tree A's Member News to:*  
[newsletter@ShadeTreeAs.org](mailto:newsletter@ShadeTreeAs.org)



## ***Refreshment Schedule***

**July**

**John Buchanan, Robbie Jones**

**August**

**No refreshments needed**

**September**

**Frank Knapp, Richard Dunevent,  
Darrell Henderson**



## ***June Birthdays***

- 21 Robert Collier Jr.
- 22 Don Turley
- 26 Margaret Ann Mobley

ANNOUNCEMENTS



**POLISH N PARTS  
CAR SHOW**  
Presented By: Project Lifting Spirits

---

**SEP 17<sup>TH</sup> 2022**  
**9 AM TO 3 PM**  
Rain Date September 18<sup>th</sup>

**James Brown Arena**  
7<sup>th</sup> Street parking lot  
601 7<sup>th</sup> Street • Augusta, GA 30901



**Stacey Blevins | 619.227.6986**  
georgiaprojectls@gmail.com  
[www.projectliftingspirits.org/carshow](http://www.projectliftingspirits.org/carshow)



**POLISH N PARTS  
CAR SHOW**  
Presented By: Project Lifting Spirits

**James Brown Arena**  
7<sup>th</sup> Street Parking Lot  
601 7<sup>th</sup> Street  
Augusta, GA 30901  
Sept 17<sup>th</sup> 2022  
9 am to 3 pm  
Rain Date Oct 18<sup>th</sup>

**\$15.00**  
PREREGISTER  
**\$20.00**  
DAY OF SHOW

**Preregister At**  
[www.projectliftingspirits.org/carshow](http://www.projectliftingspirits.org/carshow)

- Trophies
- Dash Plaques For Pre Registered Vehicles
- 50/50
- Raffles




---

**NAME:** \_\_\_\_\_

**CAR:** \_\_\_\_\_

**AMOUNT:** \_\_\_\_\_

**PROJECT LIFTING SPIRITS**  
P.O. BOX 1322 • EVANS GA 30809





## ANNOUNCEMENTS

## Message from the MAFCA President

Model A Ford  Club of America

250 SO. CYPRESS • LA HABRA, CALIFORNIA 90631-5586  
562/697-2712 • 562/697-2737 • FAX 562/690-7452



*The Prez Sez...*

June 2022

It is hard to believe that June is upon us. This month many of us are heading to our National Convention in Kerrville, Texas. I know that you are preparing your A's for the drive, please make sure you have a well-prepared car, adequate spares, cell phone, National Roster, and a roadside assistance Card. Last year on our trip across the country, all of these came in very handy.

A call to your insurance carrier to make sure you have adequate coverage is a wise idea too. I am looking forward to meeting all of you at the meet. It is not too late to register, go to [www.mafca.com](http://www.mafca.com).

I am proud to announce that our new MAFCA Mission Statement was approved at our April 30<sup>th</sup> Board of Directors meeting. Thanks to Dean Potter and his team for this effort.

#### MAFCA Mission Statement 2022

**The Model A Ford Club of America (MAFCA) seeks to bring people together worldwide interested in collecting, restoring, maintaining, and driving the Model A Ford vehicle manufactured between 1928 and 1931. Our members' interests range from blue ribbon restorations designed for judging to all aspects of Model A Ford history, including fashions and traditions of the Model A Ford Era, touring and social events.**

You still have time to submit your name as a candidate for election for the 2023-2024 Board of Directors. If you have a love for the Model A and a desire to serve at the National Level, I urge you to submit your application. More information at [www.mafca.com](http://www.mafca.com). The deadline is June 17<sup>th</sup>.

I am happy to announce the new Volume 10 edition to the "How to Restore Your Model A" Series is coming shortly. This will be the first edition printed in color. Many thanks to Les Andrews and his team. Please watch for an announcement on our website and Facebook page.

As always, I am happy to help you. Please feel free to send me an email at [president@mafca.com](mailto:president@mafca.com).

Happy Motoring, Jay McCord

## ANNOUNCEMENTS

### News from the MAFFI



#### **A Letter from the MAFFI (Model A Ford Foundation) Liaison**

Model A Day Days, September 16-17, at Hickory Corners are rapidly approaching. If you haven't made your plans for this event yet, there is still time. You can

register for the special events that will have limited participation and/or require payment of fees on the MAFFI Website ([www.maffi.org](http://www.maffi.org)) under Model A Days or the Gilmore Website under "Events". Also, be sure to read the articles in both the May/June MAFCA, The Restorer and MARC Model A News.

If you have done it all and think there is nothing at the museum that you haven't seen before, try this, camping at the Gilmore. There is nothing like the experience of walking around the buildings at dusk. With very little imagination you are walking a street in Anytown, USA in 1930. It's not crowded. A word of advice, shoot pictures from a stable position. Your camera shutter will be very slow and unless the camera is stable the pictures will be blurry. If you get it right the photos will be breathtaking in the moonlight.

Thank you,

*Mike DuBrevil*

[clubcontact@maffi.org](mailto:clubcontact@maffi.org)

## RECENT EVENTS

### Ridge Peach Festival and Parade, Trenton, SC

*(Story by Robbie Jones)*

The Shade Tree A's joined five other Model A drivers from the Aiken A's to participate in the Ridge Peach Festival parade. John Buchanan, Richard Dunevent and Charlie Weaver from the Shade Tree A's departed from Richard's at 8:30 to tour to Trenton. After the parade, all enjoyed lunch at the Park Row Market No. 1 restaurant in Edgefield, SC. The restaurant is highly recommended by Craig McMullin - and John Buchanan's cousin owns the restaurant!



### Model A Restorers Club National Meet - Part 1

*(Story by Jim McPherson)*

The Model A Restorers Club held their 2022 National Meet in Morgantown, PA June 5-10. There were 551 registrations and almost as many Model A and AA vehicles. The host hotel was the Holiday Inn, which was attached to the Classic Car Mall which hosted many meet activities. The Mall contained 700 cars for sale and 300 barn find cars for sale.

On Sunday, registration began and the Swap Meet setup began. They had a large Swap Meet with vendors selling new and used parts and accessories. Mike from Classtique Upholstery was there with Model A upholstery samples and selling upholstery kits. Ricky was there from Classic Wood Products selling Model A wood kits, and Debbie was there from Beez Kneez Puzzles selling Model A puzzles, Christmas cards and ornaments (And Larry was selling a few Model A parts. I bought some original coils and a Tilotson carburetor from him).

Monday there were several seminars, including one on valve stems and dust covers, tires and wheels presented by Gary Karr, and a meeting of the Model AA Ford Truck Club. The Welcome Party was held Monday night complete with a buffet dinner. They did not run out of food like has happened at other meets.

Tuesday activities included a seminar on paint and pin striping by Jim Brand (look for more on this latter) and a meeting of the Woody Wagon Club.



## RECENT EVENTS

### Model A Restorers Club National Meet - Part 1

*Continued*

Wednesday was devoted to judging the Fine Point (show) vehicles and the Touring Class vehicles, and the fashion entrants. Wednesday night was the Fashion Show and the Ice Cream Social where you created your own Ice Cream Sunday.

Thursday was devoted to the Grand Tour through the Pennsylvania countryside to the Leigh Valley Farm Museum where Red or Blue Ribbons were awarded to the Model A and AA's. Thursday night there was a picnic at the Mall, a first for a National Meet.

Friday activities included meetings of the Early '27 Model A Group and the 180A (De Luxe Phaeton) Club. Activities concluded Friday night with the Awards Banquet.



Richard was caught looking at this AA truck by the "MARC photographer" The picture was posted on the MARC website after the meet.

## RECENT EVENTS

### Model A Restorers Club National Meet - Part 2

*(Story by Don Turley and Robbie Jones, photos by Don Turley)*

Approximately 140-160 Model A's were present at this year's Model A Restorers Club (MARC) National Meet in Morgantown, PA. The 1929 Town Car had the highest score, 496. The blue Cabriolet scored 495. The green Cabriolet is a Canadian car. The Firetruck is an unrestored vehicle, original paint and all of the original "bells & sirens". Most Model A's at the MARC Meet also participated in the Grand Tour. Some of the cars have competed in Antique Automobile Club of America (AACA) events as well. The AACA selects only twenty vehicles per year to compete for the "Zenith" Award. The black 1930 Phaeton (with red wheels) owned by Pete Mendola was one of those twenty cars selected last year. The MARC Meets are where you will see the very best restored Model A's. The meet will be near Cincinnati, Ohio next year.





RECENT EVENTS

Model A Restorers Club National Meet - Part 2

Continued





## RECENT EVENTS

### Model A Restorers Club National Meet - Part 2

*Continued*



### Smith and Jones Swap Meet

*(Story by Jim McPherson)*

On the Friday before the Palmetto A's Swap meet, they cancelled the Swap Meet due to the expected heat. Davin stepped up and held the Swap Meet. Many Palmetto A's members pitched in to help. Friday was overcast, but the sun provided much heat for Saturday. Andrew Morse, Richard Dunevent, Ben Deitz and Jim McPherson attended. There were eight vendors with a variety of Model A parts and a sparse crowd. Hamburgers, hot dogs and ice cream were available.



SPECIAL INTEREST

Model A Era Maintenance






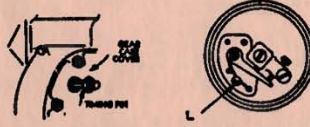
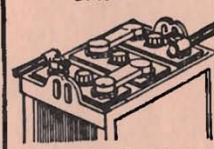
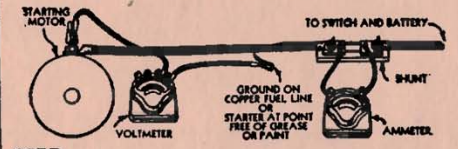
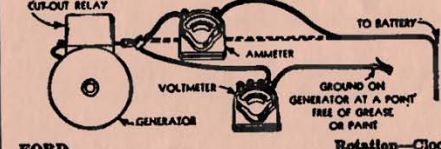
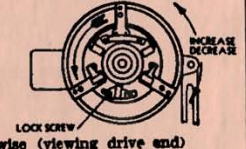
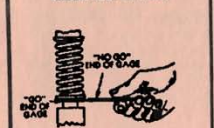
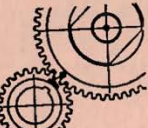
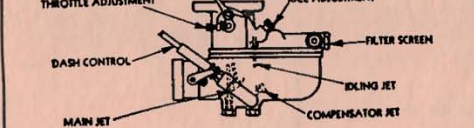
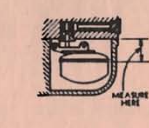
(Provided by Jim McPherson)

This is the Automotive Electric Association (AEA) Tune-Up System instructions for the 1928-29 Model A Ford, issued in January, 1935.

**FORD Four 1928-29**  
**Model A**  
**Serial No. A-1 to A-2,675,999\*\***

**A. E. A.**  
**TUNE-UP SYSTEM**

**Standards of Performance**  
**Automotive Electric Association**  
**Issued January, 1935** Form No. FO-1

<p><b>SPARK PLUGS</b></p>  <p>Use Field Gauge                  Size <math>\frac{1}{8}</math>" S.A.E. Gap .035"                  Original Equipment                  Champion type C-4                  Consult Champion                  "Operating Range"                  Chart*</p>	<p><b>Distributor</b></p>  <p>SPARK PLUGS</p> <p><b>Firing Order</b>                  1-2-4-3</p>	<p><b>IGNITION</b></p>  <p>Breaker Contact Gap—.018" (Limits .015" to .020")                  Rotation—Counterclockwise (viewed from top of distributor)                  Manual Advance—20° (Distributor)                  Automatic Advance—None</p>	<p><b>Breaker-Arm Spring</b></p>  <p>14 to 20 Oz.</p>	<p><b>COIL</b></p>  <p>Ford                  Coil mounted on engine side of dash directly above terminal junction box.</p>	<p><b>IGNITION TIMING</b></p>  <p>Use Timing Lamp—Place one clip at L and ground the other. Remove timing pin in timing case cover and insert opposite end of pin. Contacts to open for No. 1 Cylinder when pin slips into recess. Manual spark lever fully retarded.  <b>CAUTION</b>—Be careful to withdraw and reverse timing pin after timing.</p>
<b>STARTING &amp; LIGHTING</b>					
<p><b>BATTERY</b></p>  <p>FORD—13 plate                  Capacity—80 Amp. Hour. (20 hr. rate)                  Location—On left side under front floor boards.                  Ground: + Positive terminal to chassis frame.</p>	<p><b>STARTING MOTOR</b></p>  <p>FORD                  Drive—Abell* Bendix                  Lock Torque (Stalled)—14 Ft. Lbs. 580 Amps. 3.75 Volts                  Free Running Speed—2700 R.P.M. 50 Amps. 6.0 Volts.</p>	<p><b>GENERATOR</b></p>  <p>FORD                  Maximum Output Safe Setting:                  Hot—10 Amps. 7.0 Volts,                  Cold—14 Amps. 7.0 Volts,                  Cut-Out Relay—Closes at 7.0 to 7.5 Volts; at 725 R. P. M. (Gen.) Opens at 5-2.5 Amp. discharge.                  Brush Spring Tension—24 oz. (all brushes).</p>	<p><b>Third Brush Adjustment</b></p>  <p>LOCK SCREW                  INCREASE DECREASE</p> <p>Rotation—Clockwise (viewing drive end)                  Regulation—Third Brush (no thermostat)                  at 1000 } R.P.M. of Generator { These readings taken at generator. Readings at ammeter on dash will be approximately 2 amperes lower.</p>		
<p><b>VALVES</b></p> <p><b>CLEARANCE</b></p>  <p>Engine Cold                  Intake—.010" (Go)                  .013" (No Go)                  Exhaust—.015" (Go)                  .017" (No Go)                  No adjustment.                  With engine oil and coolant at normal operating temperatures.*</p>	<p><b>TIMING</b></p>  <p>Inlet Valves open <math>7\frac{1}{2}</math>" (2 flywheel teeth) before top dead center, or with piston .018" below top of cylinder block.                  No marks on flywheel</p>	<p><b>CARBURETION</b></p>  <p>FORD—(ZENITH) 1 in. Special TYPE—Updraft                  Idle Adjustment—<math>1\frac{1}{2}</math> to <math>3\frac{1}{2}</math> turns open depending upon engine conditions.                  Dash Control—Starting position—<math>\frac{1}{2}</math> to <math>1\frac{1}{2}</math> turns open                  Maximum Economy—closed                  Traffic Driving—<math>\frac{1}{4}</math> turn open                  Fixed Jets—Main Jet No. 20 Cap Jet No. 19                  Compensator No. 18 Idling Jet No. 10</p>	<p><b>FUEL LEVEL</b></p>  <p>Float Level—<math>1\frac{1}{16}</math>"                  Measure from float bowl surface to float as shown.</p>	<p><b>COOLING, FUEL &amp; OIL SUPPLY</b></p> <p><b>Cooling System—</b>                  Capacity—12 Qts. (U. S. Meas.)                  Radiator Flow—35.0 Gals. (U.S.) per min.                  Thermostat—None                  Temperature Gauge—</p> <p><b>Crankcase—Capacity—5 Qts. (U. S. Meas.)</b>                  Fuel Feed—Gravity                  Air Cleaner—None                  Gasoline Gauge—Ford                  Oil Level Gauge—Bayonet                  Oil Filter—None                  Ammeter—Ford                  Speedometer—Stewart Warner                  Windshield Wiper—Electric</p>	

Printed in U. S. A. Copyright 1935, Automotive Electric Association

# MODEL A ERA FASHION AND STYLE

## Take a Little Trip

Melanie G. Whittington

Traveling in a Model A is one of the highlights of our hobby. Combining an interest in Model As, travel, and era fashion is about the best thing I can think of to experience all aspects of this hobby. Where are you going? Is it for the weekend? What's the weather forecast? A few things to ask yourself before beginning to plan your wardrobe and luggage requirements.

"Each year motoring becomes more and more a favorite pastime as weekends grow in popularity..." according to the June 1931 issue of *Good Housekeeping*. This sentiment is



Figure 1; Picnic set

very similar to the short tours so many of our chapters take each year. Do you and a few Model A friends like to take day trips and pack a lunch? Have a little fun with it! One of my favorite trips involved the Southeastern Touring group and a trip onto the Blue Ridge Parkway. My husband and I packed a lunch and brought our picnic set along. Add some fried chicken, potato salad, and lemonade for a trip you won't soon forget. (Figure 1) These luncheon kits were suggested for anyone "motoring much". This cobra-grained Fabrikoid kit was setup for six-place settings and to fit

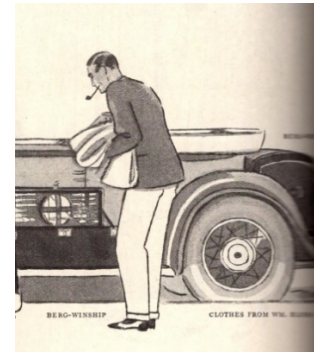


Figure 2; Luncheon kit ad from June 1931, *Good Housekeeping*

the running board. (Figure 2) Kits like these were available during all years of the Model A era. They range from simple sets to more elaborate. I have seen kits with eight-place settings, multiple thermoses, tin, or enamel boxes to carry a variety of items, cups, and various other accessories. They are not the easiest to find at antique stores, but I have seen several in my travels. It may look like a suitcase if it is setting on the floor closed. Look a little closer and you may find a treasure.

**LUGGAGE**  
--that will go vacationing with smart travelers

**For Short Trips**  
Light luggage for feminine travelers is not a luxury but a necessity. Custom built of the finest materials, our hat boxes, week-end cases and suit cases are noted for durability.  
\$3.95 TO \$25.00

**For Long Trips**  
Whether your trip is by sea or land or a combination of both, our new zipper cases and guaranteed wardrobe trunks will withstand the rough usage of both European and American travel.  
\$15.00 TO \$100

**Motoring Trips**  
--are incomplete unless motoring luggage meets every necessity of the itinerant traveler. Trunks and cases are equipped to facilitate motor travel here and abroad.  
\$10.00 TO \$65.00

The importance of correct luggage cannot be over-emphasized. See our selection at once.

**The Regal Company**  
36 WEST MARKET STREET  
Luggage the Acceptable Gift for Commencement.

Figure 3; *York Daily Record*, July 1927, "new zippered cases"

"Talon Hookless Fasteners," "slide fasteners" or "Zip-O-Grips" were all names for what we would call a zipper. These started showing up in luggage before the Model A era. Here is an ad from July 1927 in the *York (PA) Daily Record*. (Figure 3) The same ad, two months earlier, from Austin, TX did not mention the "new zippered cases" noted in the "For Long Trips" section.

Of other interest is the mention on short trips using "light luggage for feminine travelers". Not only were motoring trips becoming commonplace, the ads were focusing on females and the needs of traveling with multiple dresses, shoes, and hats.

In our effort to reproduce an authentic trip in our Model As, we may not be able to go into every aspect, but pick something you enjoy and try it! If you love hats, find a nice hat box and throw it in the back seat, trunk or rumble seat. If you're lucky enough to have a truck, you have plenty of room for luggage. Be sure, if you're using originals, to keep them protected from the elements. They aren't making any more "Wheary Wardrolettes of buffalo rawhide." (Figure 5)



# MODEL A ERA FASHION AND STYLE



Figure 4; Luggage from June 1931, Good Housekeeping

“Brimmed hats having returned to fashion importance, a large hat box is required, as proved by the Mendel-Drucker model, covered in Scotch tweed duck.” Also shown, is the Oshkosh duffel bag of orange and red striped cord duck which is great for shoes. In the lady’s hand you see a Zip-O-Grip handbag made of bright-colored goat skin. At her feet is the Revelation suitcase of black cobra-grained cowhide with locks and adjusts to 14 sizes. The Seward Aero-Pak suitcase, to the far left, included wardrobe conveniences. Hanging over the Seward is a Snuggle Rug of English plaid woolen, which, on motor trips, is a “wise precaution”. This rug is bag shaped and uses a Talon Hookless Fastener closing. (Figure 4)

The items in Figure 5 include the Oshkosh hat box, with cord duck to match the duffel bag mentioned earlier. Trunks were used for longer trips, usually rail or sea travel. Wardrobe trunks would keep your clothes

organized and less wrinkled. Dresses of lace, such as Chantilly, were invaluable for travel as they don’t show wrinkles as easily as silk. Wool suits were also great for cool days and less prone to wrinkling. Bringing along wraps or “tiny jackets” which can be used with multiple outfits is also a smart idea. Those with light fabric such as chiffon or “transparent velvet, require almost no space at all.”



Figure 5; Luggage from June 1931, Good Housekeeping

This February 1930 ad from the Kansas City Star for Aerolite Bags specifically mentions they are “designed for air travel.” It also featured a Zip-Lock fastener. (Figure 6)



Figure 6; February 1930 ad from Kansas City newspaper, Aerolite Bags featuring Zip-Lock fasteners

Next time you travel in your Model A, think about your luggage and packing for the era. Many of these suitcases, duffles, and trunks can be found on eBay or in antique stores, for a decent price. Even if you only use it as a prop in your “A,” or for your next trip down the runway at a fashion judging event, you’ll be adding a little more authenticity to the occasion.

#####

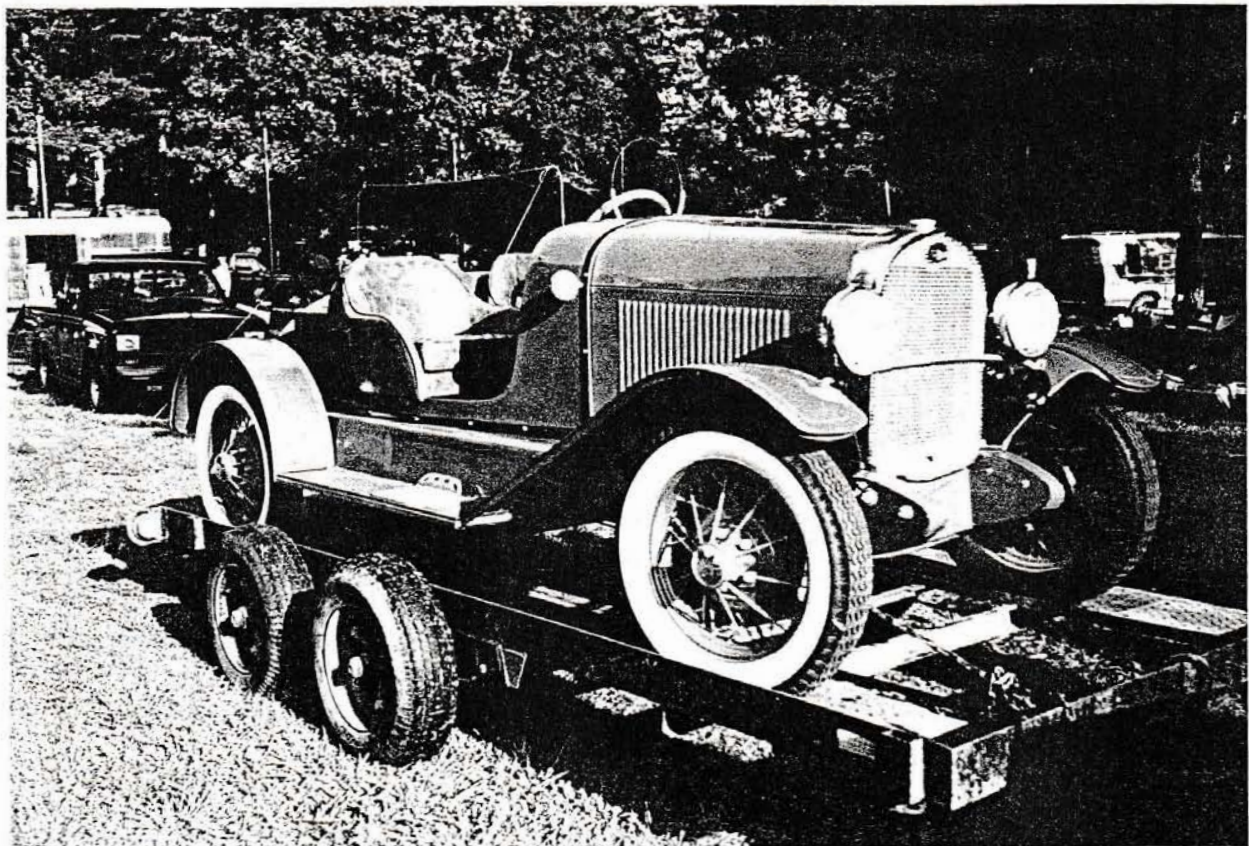


## THE SHADE TREE A'S – THIRTY YEARS AGO



The 1985-2005 *Shade Tree A's Newsletters* are now available on the Shade Tree A's website. They can be accessed via the same "button" as the other *Newsletters*, but they are password protected. The same password used to access the member roster is used to access the *Newsletters*. Thank you Dan Perla for scanning these and posting on the website.

The July 1992 issue of the *Shade Tree A's Newsletter* announced that Jim McPherson and Don Turley had completed the Model A Ford Club of America's Judging Tests in all twenty-three areas becoming Certified MAFCA National Judges. Jim went on to judge brakes at the MAFCA National Meet in Texas and Don went on to judge horns at the same meet. The highlights of the Dallas meet were summarized later in the Newsletter. An article concerning Triplex windshields used in Model A Ford cars was also included. A tribute to Paul Moller described the many ways that he had helped Shade Tree A's members over the years. Many members had come to know Paul from the annual treks to Hershey. Reports on recent trips to Redcliffe Plantation and the Lock and Ham Jam.



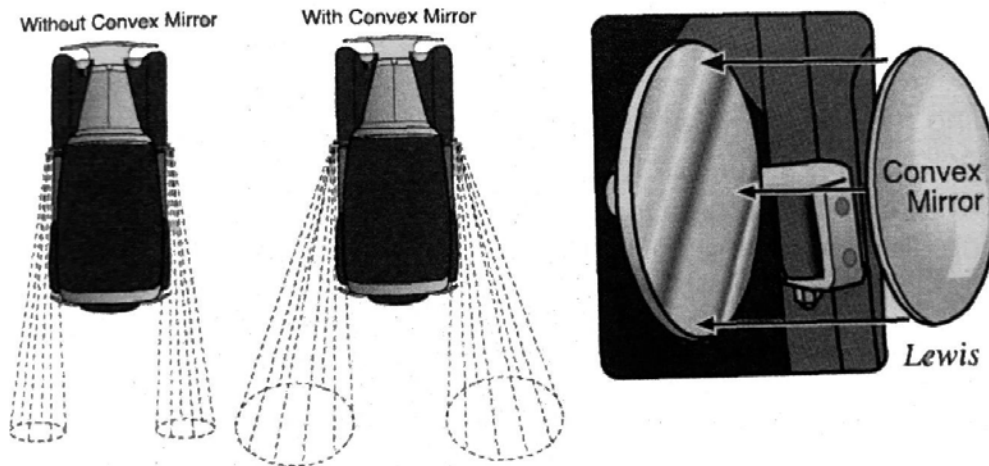
Is this 30 Speedster Frank Knapp's? No, it was another A in the flea market.

## TECHNICAL TOPICS

Submitted by Dan Ritt, Mt. Grab, Ohio

Illustrated by Dick Lewis, Lawrenceburg, Indiana

# Improve Your Hind Sight



Increase your rearward field of view by applying a “Peel and Stick” type 3 ¾” convex mirror directly on your stock outside rear view mirrors. These convex mirrors are inexpensive and can be found at most auto parts stores and department stores with an automotive department.

The left side mirror by itself is fair, but adding a convex mirror gives you much better coverage. For those of you with right-hand rearview mirrors, you know how little you can see with them. With a convex mirror on the right-hand side mirror you can see almost the entire side of the car from the ground to above the height of the car and well off to the area beside and behind the car.

The Restorer

May/June 2009

Volume 54, Issue 1

## TECHNICAL TOPICS

### Jim's Tech Tips

#### "Mounting Wheels"

I know that my Dad reads these Tech Tips, so today's is a special shout out to him, who taught me this Tip for mounting wheels when I was about 12 years old. Thanks, Dad!

Start with a classic X-style lug nut wrench. If you don't already have one, mine is 20" across and works quite well.

Place the wheel/tire next to the vehicle, leaning it against the hub and brake drum you plan to mount it on. Adjust the jack so that the wheel needs to be lifted an inch or two onto the studs.



Now slip two of the tire iron arms under the tire, one arm to the left of where the tire touches the ground, and the other arm to the right. Grab one of the tire iron arms that is pointing out toward you, and lift the tire up with one hand while you guide the wheel to hang on a stud or two with the other hand.



Hold the wheel in against the drum while you lower the lug wrench and use that free hand to start a lug nut on one of the studs. Once you have that lug nut started, you can let go of the wheel and start the rest of them. Use the tire iron to run them all in snug, then lower the jack and tighten them all again.

This Tip is not just applicable to mounting a wheel/tire on a Model A. It works on pretty much any vehicle: car, truck, trailer... In fact, the larger and heavier the wheel/tire is that you are putting on, the bigger help this is.

So in the shop or out on the road, use a simple tire iron to help you lift a wheel up into place and hold it there while you start the lug nuts.

Until next time, *Have a Model A Day!*

Jim

## Member Advertisements

*Deadline for submittal – 20<sup>th</sup> of the month – Send submittals to [newsletter@ShadeTreeAs.org](mailto:newsletter@ShadeTreeAs.org)*

### FOR SALE

Larry Brumfield head. Pictures available. Bought several years ago from Larry Brumfield. Head was trued two years ago. Came as a 5.2, not certain after leaving the machine shop, runs good. All original paper work, \$300

Original distributor I have been using as a spare, ready to drop in. \$100

Contact Abbie Prince

## Paid Advertisements


### SHADE TREE A'S NEWSLETTER SPONSORS

*Our thanks to the following sponsors! Their generosity supports this Newsletter and the Shade Tree A's! Please remember these folks when you need a service they offer. And please, tell them you appreciate their support of our Club!*

**Bentley's**  
Antique Auto Service, Inc.

We are a Full Service Shop, specializing in Model A Fords  
We offer Award-Winning Paint and Bodywork  
Expert Service and a Complete Machine Shop  
Enjoy the Drive...

**678-407-1947**



**Bert's Model "A"  
Ford Center**

2767 S. Tejon, Englewood, CO 80110  
ph# 303-293-3673 or 800-321-1931  
email address - parts@modelastore.com  
[www.modelastore.com](http://www.modelastore.com)

**We buy and sell original and reproduction Model A Ford parts!**



**BRATTON'S**  
**ANTIQUE AUTO PARTS**



800-255-1929 Phone  
 www.brattons.com  
 800-774-1930 Fax  
 1506 Back Acre Circle  
 Mount Airy, MD 21771

*Your source for Quality Model A Ford Parts since 1976*

1003 ALEXANDER DRIVE  
 AUGUSTA, GA 30909

P.O. BOX 212072  
 MARTINEZ, GA 30917

**D&M**   
**D'Antignac & Merritt Heating & Air, Inc.**  
 Turn To The Experts.

(706) 667-0196 Doug Wilson

**FAIRWAY FORD IS YOUR  
 BEST PRICED  
 FORD DEALER**

706-854-9200 | FairwayFordAugusta.com



**FAIRWAY**  
 FORD/EVERANS GEORGIA

**POWDERCOATING**  
 Professional Powdercoating Service

**JAPW Racing Inc.**

200 Rose Street  
 Martinez, GA 30907  
 info@jrpwrcing.net

Jimmy Rivers  
 706-863-1206

**Mike's "A" Ford-able Parts**  
**Mike Butcher** 

124 Model A Drive, Maysville, GA 30558  
 email: mike@mikes-afordable.com - www.mikes-afordable.com  
 Fax: 706 652 2492 - Phone: 706 652 3866  
 1 888 TRY MIKE (879 6453)



*Specialising in 1928 - 1931 Model A Ford Parts*

**"ONE MILE AHEAD"**  
*Smith and Jones*  
 Antique Auto Parts

60 Wisconsin St., W. Columbia, SC 29170  
 803/822-4141 FAX 803/822-8477



Quality Parts  
 Same Day Shipping  
 Established 1972  
 142 Page Catalog  
 Order Desk 800-422-1928

 [www.snjparts.com](http://www.snjparts.com)

The World's Largest Selection of 1909-31 Ford Parts

**Snyder's**  
**ANTIQUE AUTO PARTS**

12925 Woodworth Rd. • New Springfield, OH 44443  
 Toll Free Ordering (888) 262-5712  
 or FAX (888) 262-5713  
 Order On-Line @ [www.snydersantiqueauto.com](http://www.snydersantiqueauto.com)



 **FREE Fully Illustrated CATALOG**  
 \$10.00 outside the U.S., Canada, & Mexico

**Joseph E. Spires**  
 ATTORNEY-AT-LAW

Ward & Spires, LLC  
 445 Walker Street  
 Augusta, Georgia 30901

Phone (706) 724-2640  
 Facsimile (706) 724-2642  
 E-mail: [Wardspires@aol.com](mailto:Wardspires@aol.com)