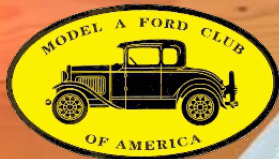


SHADE TREE A'S

NEWSLETTER



January 2023

Volume 50

Number 1



Model A Ford Club of America
2022 Newsletter of the Year
In recognition of exceptional effort,
Robbie Jones
2022 Editor of the Shade Tree A's MAFCA Newsletter
Shade Tree A's Newsletter
is presented MAFCA's Newsletter of the Year Award
In the publication of this superior newsletter.
John P. ... *R. L. ...*



4424 Reynolds Street
Hephzibah GA 30815-7909
Website: <http://www.ShadeTreeAs.org>



President Craig McMullin	803-341-8955 pres@ShadeTreeAs.org
Vice President Dan Perla	706-855-5730 vp@ShadeTreeAs.org
Secretary Frank Knapp	706-736-5238 sec@ShadeTreeAs.org
Treasurer Stuart Smith	706-825-9441 treas@ShadeTreeAs.org
Tour Director Charles Weaver	706-373-9422 tourdir@ShadeTreeAs.org
National Director Matt Barrett	706-799-3699 nationaldir@ShadeTreeAs.org
Board of Directors Darren Riley	803-230-9510 bod1@ShadeTreeAs.org
Board of Directors Andrew Morse	706-834-2342 bod2@ShadeTreeAs.org
Board of Directors Jim McPherson	706-564-0120 bod3@ShadeTreeAs.org
Membership Coordinator Frank Knapp	706-736-5238 membership@ShadeTreeAs.org
Newsletter Editor Robbie Jones	706-860-2758 newsletter@ShadeTreeAs.org
Photographer Sheila McPherson	706-592-4835 photographer@ShadeTreeAs.org
Era Fashions Anne Neely-Beck	478-945-3736 erafashions@ShadeTreeAs.org
Webmaster Dan Perla	706-855-5730 webmaster@ShadeTreeAs.org



CONTENTS

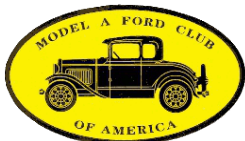
Columns

Off the Running Board	3
Meeting Minutes	3
Board of Directors Meeting Minutes	3
Club Calendar	5
Announcements	
Shade Tree A's Member News	6
Refreshment Schedule	6
Birthdays	6
Other Sundry Announcements	7
Model A's in the News	7
More Model A's in the News	8
Recent Events	
Shade Tree A's Christmas Party	10
Model A Era Fashion and Style	11
The Shade Tree A's - Thirty Years Ago	15
Technical Topics	16
Advertisements	17

On the Front Cover

Shade Tree A's Club President, Jim McPherson, presents the Model A Ford Club of America Newsletter of the Year Award for 2022 to the *Shade Tree A's Newsletter* editor Robbie Jones.
Photo by Craig McMullin

SHADE TREE A'S MODEL A CLUB



The Shade Tree A's Model A Club is a non-profit organization dedicated to the preservation and the restoration of the Model A Ford automobile. Shade Tree A's annual dues are only \$25. Members are urged to join the Model A Ford Club of America (www.mafca.com) and the Model A Restorer's Club (www.model-a-ford.org) to enjoy the benefits of these national organizations including their respective magazines: *The Restorer* (MAFCA) and *Model A News* (MARC). The Shade Tree A's club is also a member of MAFFI, the Model "A" Ford Foundation, Inc.



CONTACT INFORMATION

4424 Reynolds Street
Hephzibah GA 30815-7909
Website: <http://www.ShadeTreeAs.org>

ABOUT THIS NEWSLETTER

© 2023 Shade Tree A's, except as noted.
Please contact Robbie Jones at Newsletter@ShadeTreeAs.org concerning reprinting of articles, illustrations, or photos.

OFF THE RUNNING BOARD

Craig McMullin - President

Happy New Year! I hope this first *Newsletter* of 2023 finds you and your family in good health and ready to have some fun with your Model A. I look forward to the New Year as the President of the Shade Tree A's and the opportunities that lie just around the corner. I hope that your experience as a member of the Shade Tree A family has and will continue to be an enjoyable one.

Thank you Jim McPherson for serving as President of the Shade Tree A's this past year, Well Done! You have made the turnover and my transition as President enjoyable these past few weeks.

As you read this, I have already met with the new Board of Directors last week to discuss some administrative and planning functions for the coming year.

Our first club meeting on Monday, January 9th will be an important one to attend. As part of our normal agenda, I plan to have an open discussion on the types of activities and any special trips the club would like to consider for 2023. I will have a few suggestions to kick the discussion off but the focus will be to solicit your ideas and feedback.

Ahooga,
Craig McMullin - President

MEETING MINUTES

There was no December meeting of the Shade Tree A's due to the Christmas Party; therefore, there are no December meeting minutes.

MONTHLY MEETING TIME & LOCATION

Meetings are held on the second Monday of each month at Richard Dunevent's garage, 4338 Owens Road, Evans, Georgia. Meetings begin at 7:00 PM and are followed by refreshments.

BOARD OF DIRECTORS MEETING MINUTES

December 27, 2022

Richard's Garage

Respectfully submitted: Frank Knapp - Secretary

The Shade Tree A's Board of Directors met December 27, 2022 at our Club meeting room at Richard Dunevent's garage. Board members present included President-elect Craig McMullin, Vice President-elect Dan Perla, Treasurer Stuart Smith, and Secretary Frank Knapp. Other board members included Andy Morse, Darren Riley and Jim McPherson. STA members Robbie Jones (Newsletter editor), Larry Duvall, Theresa McMullin and Richard Dunevent were also in attendance.

President-elect Craig McMullin brought the meeting to order promptly at 6:30 P.M. with a rather lengthy list of topics to be discussed. First item for discussion centered around ways to improve our monthly meeting agenda such as, bringing back our Name Tag penalty cup, passing around an attendance sheet and more attention to our Refreshments Roster. Also having more detailed "officer reports" was discussed.

BOARD OF DIRECTORS MEETING MINUTES

Continued

Quite a lengthy discussion ensued concerning plans to celebrate our STA 50-year anniversary celebration in June. Many ideas were tossed about; however, nothing concrete was decided.

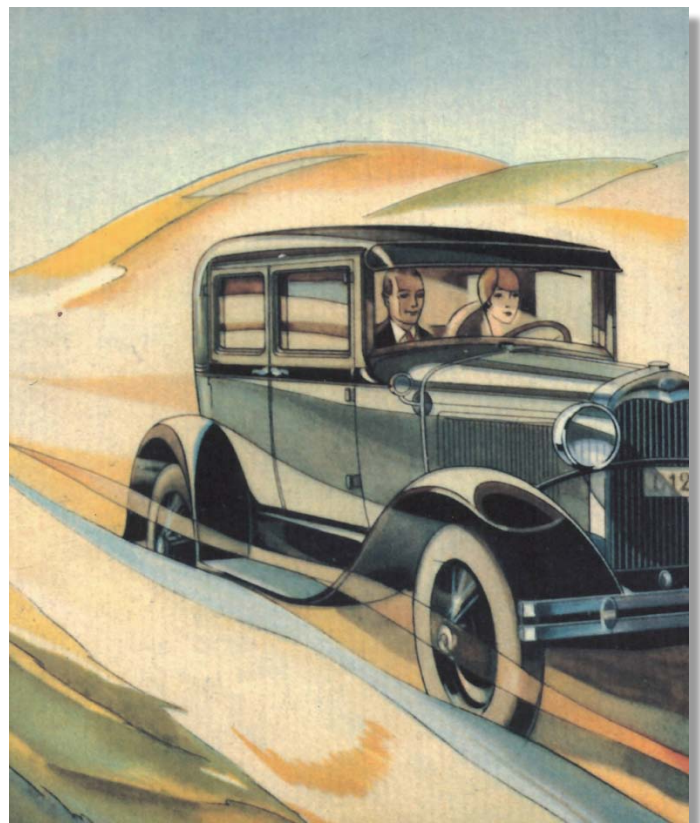
Several other items were brought to the table including contacting our advertisers for renewal, a discussion concerning our money market account and other possible fund raisers. New ideas were also bounced around for our monthly Technical Programs and Saturday Seminars. Also, upgrades to our Wayne Ready Memorial Library were considered.

There was also discussion regarding any interest in renaming the Club *Newsletter*. If the Club agrees, hopefully our members will come forward with some unique suggestions. No doubt there will be more to come on this issue at our monthly meetings.

Ideas for Club tours for 2023 were also discussed. Everyone seemed to like the idea of a tour every other month alternating with a Saturday Seminar. Tours will be restricted to local venues, such as trips to different area restaurants no further than one hour's drive both ways.

In order to possibly increase membership, the board decided to reinstate Shade Tree A's business cards distributed to all members. These cards will be generic allowing each member to add his or her name and contact info. Hopefully, they will be handed out to anyone interested in more information about the Shade Tree A's.

There being no further business, the lengthy and highly productive meeting was adjourned at 8:05 P.M.



Jim McPherson provided this image originally printed on heavy stock paper. Note the white wall tires on this 1930 Tudor Sedan and a woman driving. Does this image depict the speed and ease of driving a Model A?

CLUB CALENDAR

Shade Tree A's Events

January

- 1 Shade Tree A's New Year's Day breakfast, Cracker Barrel at I-20 and Belair Road
- 9 Shade Tree A's Meeting, 7:00 PM, Richard's garage (Technical Program - *The Model AA Truck Collection of Steve Teal*, presented by Steve Teal)

February

- 13 Shade Tree A's Meeting, 7:00 PM, Richard's garage (Technical Program - *Rebuilding Model A Distributors*, presented by Eric Shogren)
- 18 Saturday Technical Session, *You Can Rebuild YOUR Distributor*. If you do not have a spare distributor, or the distributor in your Model A needs rebuilding, this is your chance. We will meet at 9:30 AM at Richard's garage. Lunch will be served.

March

- 13 Shade Tree A's Meeting, 7:00 PM, Richard's garage (Technical Program - *Model B Engine with Insert Bearings*, presented by Stuart Smith)
- 17 Saint Patrick's Day parade, Augusta, GA

Every Wednesday at 11:30

Join the Shade Tree A's for lunch at Cicis Pizza on Wheeler Road

TBA - To Be Announced

Other Events of Interest

January

- 14 38th Annual Model A Winter Swap Meet, Shepherdsville, KY
- 26-28 AACA Winter National Meet, Miami, FL

March

- 31-April 1 Swap Meet, Moultrie, GA

April

- 13-16 Charlotte Autofair, Charlotte, NC
- 13-15 AACA Southeastern Spring National Meet, Charlotte, NC
- 14-15 Old 96 District Model A Club Swap Meet, Greenwood, SC

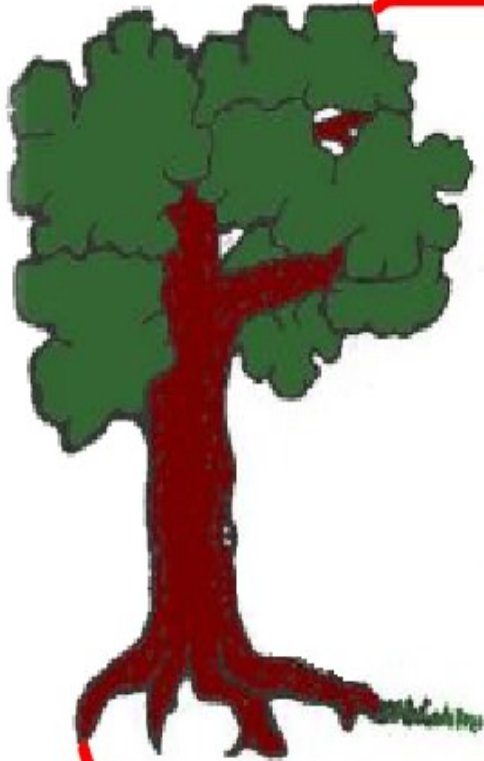
May

- 1-3 AACA Southeastern Divisional Tour, Oak Ridge, TN
- 12-13 Mid-Atlantic Pre-War Swap Meet (Model A & T) Luray, VA
- 18-20 AACA Eastern Spring National Meet, Gettysburg, PA

July

- 30 - August 4 MARC National Meet Hamilton, OH

ANNOUNCEMENTS



Shade Tree A's Member News

- Don Turley was acknowledged for his contribution to the article, *Evolution of the 1928-1931 Model A Ford Rear View Mirrors for Passenger Vehicles*, in the September/October issue of the *Model A News*
- Jim McPherson was recognized for 60 years and Robert and Carol Taylor were recognized for 30 years of membership in the Model A Ford Club of America in the September/October issue of *The Restorer*
- Matt Barrett's 1930 Tudor Sedan and 1931 Victoria were featured in the January 2023 wedding issue of the *Augusta Magazine*

Send items for Shade Tree A's Member News to: newsletter@ShadeTreeAs.org



Refreshment Schedule

January

Jim and Sheila McPherson, Dan Perla
(leftovers from the Christmas Party will be served, ham and turkey sliders, mac and cheese, green beans, dressing and gravy, dessert, etc.)

February

Volunteers needed

March

Volunteers needed



January Birthdays

- 6 Steve Teal
- 13 Dean Summers
- 14 Don Bray
- 26 Steven Spencer
- 31 Janet Neumar

ANNOUNCEMENTS

ATTENTION!

Shade Tree A's Member Dues Late Notice

ATTENTION!

Shade Tree A's member dues for 2023 were due by the end of December 2022. If you haven't paid your dues for 2023, please see the Club Secretary, Stuart Smith to make your payment by January 31, 2023. Checks or exact cash with your name attached are appreciated.

Model A's in the News

Story by Robbie Jones

Photos provided by Matt Barrett

Model A's have been in the news quite a bit lately, both locally and nationally (see article on next page). Locally, Matt Barrett's 1930 Tudor Sedan and 1931 Victoria were featured in the January 2023 wedding issue of the *Augusta Magazine*. A very nice photo of Matt's Victoria was shown in front of the Marion Hatcher Center as part of a wedding photo shoot. If you have access to a copy of the magazine check it out!



ANNOUNCEMENTS

More Model A's in the News

Story by Robbie Jones

Photo credits as noted

Although it's not uncommon for our favorite car to be featured in national automotive related articles, there seems to have been more than the usual amount recently. Hagerty Insurance Agency recently published an article titled *Your Handy 1928-31 Ford Model A Buyer's Guide* written by Sajeev Mehta. The article is available at the following web address:

<https://www.hagerty.com/media/buying-and-selling/your-handy-1928-31-ford-model-a-buyers-guide/>

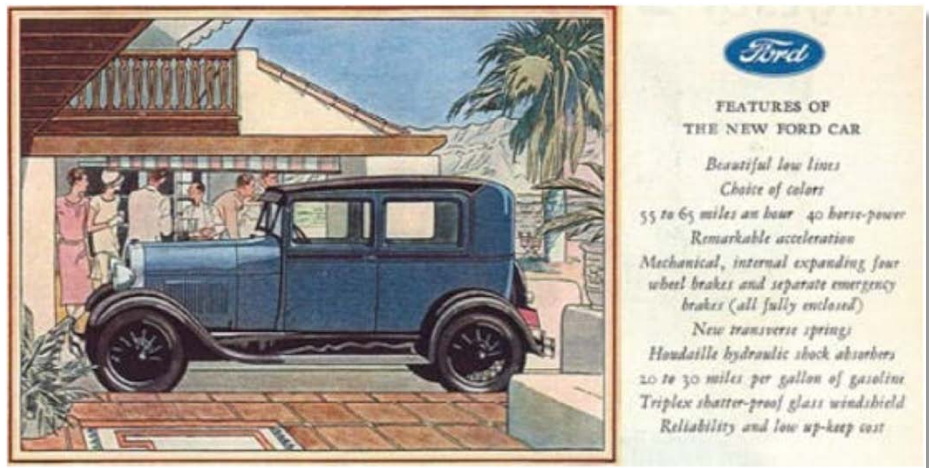


Source: Hagerty Insurance Agency

The article provides some background on the Model A and a summary of changes made during its production life. The article went on to discuss what to look for when buying a Model A including the availability of parts and what to pay. Links to the 1987 movie *Ford: The Man and the Machine* and a Hagerty video about pouring babbitt bearings are also provided.

Hagerty also published an article titled *After 215 Years, Is It Finally Hydrogen's Time to Shine as Fuel?* which included a discussion on Model AA trucks converted to run on hydrogen in Norway and Russia during the 1930's. The article also mentions a Model A pickup truck converted to run on hydrogen by a Texas high-school senior named Roger Billings during the 1960's. Billings converted the truck to run on hydrogen, which he stored in two cylinders in the pickup's bed. The vehicle took first place at the 1966 International Science Fair in Dallas and would help Billings win a grant from Ford to continue his research as an undergraduate. The article is available at the following web address:

<https://www.hagerty.com/media/automotive-history/after-215-years-is-it-finally-hydrogens-time-to-shine-as-fuel/>



Source: Hagerty Insurance Agency

ANNOUNCEMENTS

More Model A's in the News

Continued

Hemmings also published an article titled *Almost a Century Later, the Model A is Still One of the Easiest Cars There is to Own*. The article notes the Model A as one of the easiest cars to collect due to the availability of parts. As is usual for articles of this type, a summary of Model A production and history is included. The article mentions the two national organizations, the Model A Ford Club of America and the Model A Restorers Club, as sources of information and advice and a means of connecting with other enthusiasts. The article goes on to focus on the Tudor which they believe is the ideal Model A owner's car for a variety of reasons, not least of which is the prospect of extra leg room in the front seats, attractive price point in the current market, and an all-steel body. The article is divided into sections that discuss the engine and drivetrain, body and chassis, suspension, and interior. The article concludes by stating:



Source: Hagerty Insurance Agency

The Model A walked the line perfectly as a new car: inexpensive but not austere; simple but not grimly utilitarian. Those virtues make it a great car to own today. It's capable, easily worked on, easily obtained, and above all—fun.

The Tudor sedan is perhaps the most essential of all Model A's. Their initial popularity means they're easy to find today and their comparatively sensible nature when compared to the glamorous roadsters, phaetons, and coupes mean that they're not suffering from an overheated market due to competition from hot rodders.



Source: Hemmings

If you've ever contemplated owning a pre-World War II car, it's hard to recommend anything more highly than a Ford Model A Tudor.

The entire article can be found at the following web address:

<https://www.hemmings.com/stories/buyers-guide-ford-model-a/>

RECENT EVENTS

Shade Tree A's Christmas Party

Story and photos by Robbie Jones

Jack Sheppard once again graciously allowed the Shade Tree A's Christmas party to be held at his Country Store on December 3, 2022. If you've never been to Jack's, his place is a real treat and a great place for our Christmas Party. Everyone enjoyed the fellowship and turkey and dressing, ham and all the trimmings supplied by Wife Saver Restaurant. During the party, Club President, Jim McPherson, officially presented the Model A Ford Club of America Newsletter of the Year Award for 2022 to the newsletter editor, Robbie Jones. Craig McMullin also presented service awards to several members including Stuart Smith and Doug Wilson. Entertainment was arranged by Matt Barrett, a special treat from the saxophone quartet from Greenbrier High School directed by Rutledge Boykin. Thank you Matt for the extra special touch to a great Christmas Party.



MODEL A ERA FASHION AND STYLE

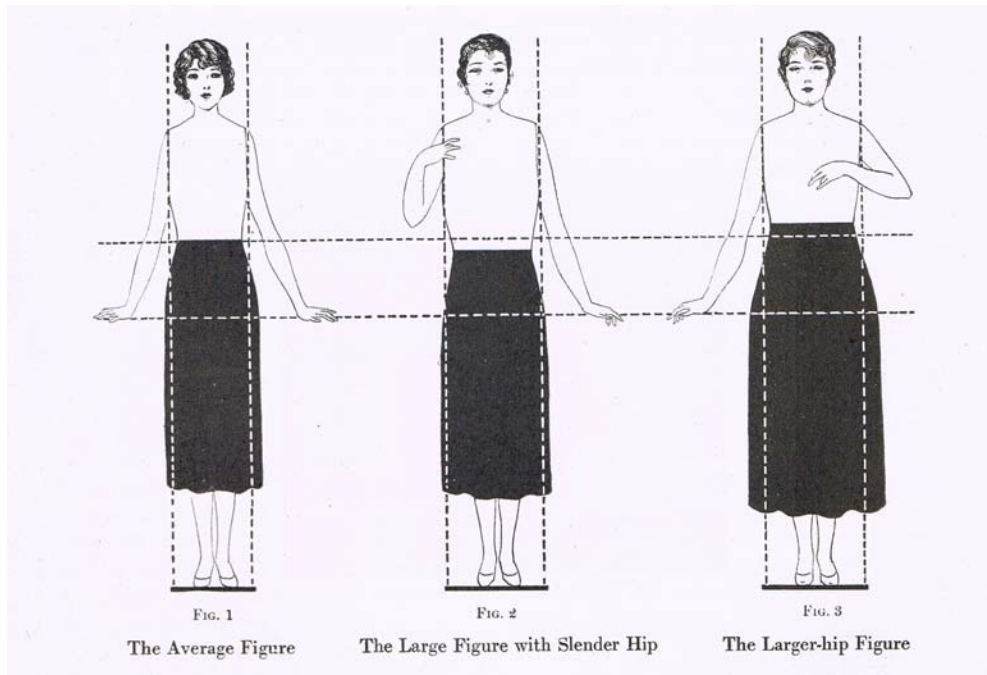
The Sizing of Model A Era Patterns

By Peggy Gill

[Authors Note: The terminology and language found in period sources is often quite different than our modern phrases and idioms. I have chosen to keep as much of this language intact—if for nothing else other than a humorous nod to the past.]

Like the brightly colored stick candy that lured a child to the candy counter in mercantile stores of bygone eras, vintage fashion patterns offer an endless source of intrigue and fascination to a seamstress who is also a Model A fashion enthusiast. These vintage patterns offer a glimpse into the past for fashion detail not often seen in modern designs. For the seamstress, her fingers may begin to tingle with the anticipation of being able to recreate these garments in an effort to bring these styles to life in our modern era.

Before you cut, please take note...Model A era patterns may *appear* to be sized differently than modern ones. It is not so much that they are sized differently, but that terminology back then may be different when compared to our modern day terms and phrases—but perhaps more significant is that the size of the “average figure” has changed. I happened upon a book that was published by The Pictorial Review Company, a pattern company popular during the Model A era. First published in the mid-twenties as a guide for the home seamstress, *The Mary Brooks Picken Method of Modern Dressmaking* author Mary Brooks Picken stresses that before you choose a dress pattern to work with it is essential that “you choose that pattern definitely designed for your type...average, slender hip, or larger-hip figure.”



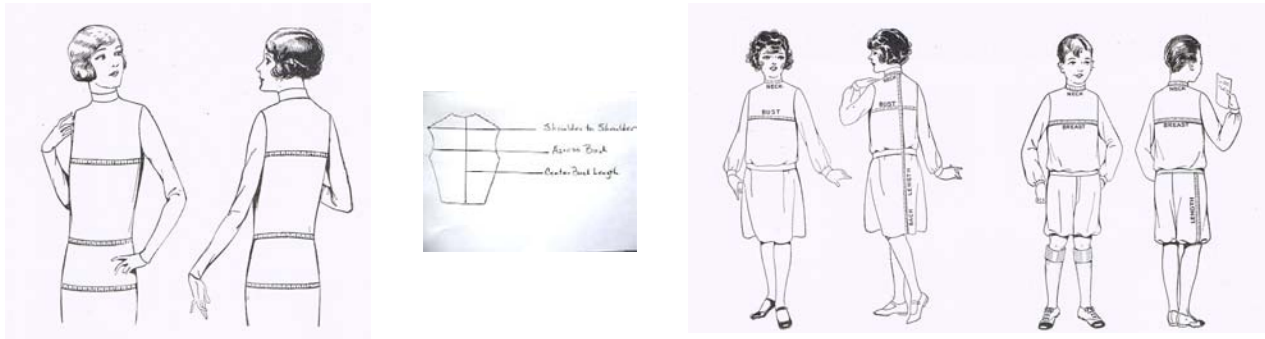
The Average Figure (Fig. 1) has a bust that is slightly smaller than the hip measurement, and the waist-line is at the natural waist. This is all figures with average proportions in hip and bust, with the bust measurement being less than 42 inches.

The Large Figure with Slender Hip (Fig. 2) shows a figure with the bust and hip measurement practically the same and with the waist-line lower than that of the average figure person. This shape is designed for large figures, that is, one with a bust of 42 inches or more.

The Larger-hip Figure (Fig. 3) has a hip measurement larger than the bust and the waist-line is higher than that of the average figure person.

MODEL A ERA FASHION AND STYLE

It is important to take current measurements for each new pattern or project. It is a simple fact of life...our bodies change as we age. The illustrations below show the placement of the tape measure for women and children. According to *The Mary Brooks Pickin Method of Modern Dressmaking*, taking measurements correctly is paramount to a well fitting garment. "To take the bust measurement, draw the tape under the arms and straight across the back, taking the measure around the fullest part of the bust. For correct waist measure, draw the tape around the figure at the natural and normal waist-line, taking the measure snug, but not tight. To measure hip width, draw the measure around the figure, 7 inches below the natural waist-line. Have the tape easy on the hip and not too tight. When taking the measure for misses and small women, place the tape at the fullest part of the hip."



"Juvenile patterns" refer to juniors, girls, and children. (Notice that boys are not included here.) Sizes for these patterns are according to the age of the child, "if the child is of average size for its age." If the child is larger or smaller than "average" the bust/breast/chest measurement should be used. Misses sizes refer to young women and older teens, or women of small stature. Something to note about the misses sizes is the cut or "line" of the pattern. Although a persons measurements may fit the guidelines outlined below, the overall fit may be too small. For example, looking at an era pattern that says it is a size 18 years will show that the bust measurement is 36". In my opinion, based on personal trial and error, patterns that are sized using the numbers 13-20 are made for younger women and older teens who have more slender arms and less, shall we say, *natural padding* in strategic places. The measurement across the back at the shoulders also tends to be narrower. One suggestion is to make a mockup of your chosen pattern in a muslin or other similar inexpensive fabric to make sure the sizing is right for you.

Like "juvenile patterns," patterns for boys are sized according to age "as long as the boy is the average size for his age. If he is larger or smaller than average, coats, suits, and blouses would be sized by the chest measurement." Shirt patterns used the neck measurement and trousers used the waist measurement.

Men's shirt patterns used the neck measurement for sizing. When using a shirt that the man currently wears for this sizing, measure the neck-band from the center of the buttonhole at the left end to the center of the buttonhole at the right end. If measuring a man's actual neck, hold the tape "easy around the bare neck where the neck-band comes...then add one-half inch to this measure." Sleeve length was also important in men's shirts. Measure sleeve length from the center back (where the buttonhole at the center back of the shirt would be) "over the elbow with the arm bended to the wrist."

MEASUREMENT CHARTS

The following "Corresponding Measurement of Patterns" comes from *The Mary Brooks Pickin Method of Modern Dressmaking* and refers to **The Pictorial Review** patterns of that time (which include the Model A era). All measurements are in inches. It was suggested that if you fall between sizes, it was usually better to "select the size larger, especially if ease was desired in the garment."

The Average Figure:

Bust	34	36	38	40	42	44	46	48	50	52
Hip (7" below waist-line)	38	40	42	44	46	48	51	53	56	59
Across the Back	14	14	15	15	16	16	17	17	18	18
Waist	27	29	31	33	35	37	39	41	43	45

MODEL A ERA FASHION AND STYLE

The Large Figure with Slender Hip:

Bust	42	44	46	48	50	52	54	56	58	60
Hip (7" below waist-line)	42	44	46	48	50	52	54	56	58	60
Across the Back	15	16	16	17	17	18	18	19	19	20
Waist	35	37	39	41	43	45	47	49	51	53

The Larger-hip Figure:

Bust	35	37	39	41	43	45	47	49	51	53
Hip (5" below natural waist-line)	37	39	41	43	45	47	49	51	53	55
Hip (7" below natural waist-line)	40	42	44	46	48	50	53	56	59	62
Across the Back	14	14	15	15	16	16	17	17	18	18
Waist	29	31	33	35	37	39	41	43	45	47

Juniors, Girls, and Little Children:

Years	½	1	2	3	4	5	6	7	8	9	10	11	12	13	14	15	16	17
Breast	19	20	21	22	23	24	25	26	26	27	28	29	30	31	32	33	34	35
Waist	19	20	21	22	23	24	25	25	26	26	27	27	27	28	28	28	29	29
Entire Length Shoulder to Hem	21	22	24	25	26	28	29	30	32	34	35	37	39	41	43	46	48	50

Misses:

Years	14	16	18	20
Bust	32	34	36	37
Hip (7" below natural waist-line)	35	37	39	40
Waist	26	27	28	29
Length of Dress at center front from waist-line to hem	32	35	37	38
Length of Dress (beginning with Pattern No. 2345)	30	32	33	34

Boys:

Years/Size	2	4	6	8	10	12	14	16
Breast	22	23	24	26	28	30	32	34
Waist	21	22	23	24	26	27	28	29
Neck	10	10 ½	11	11 ½	12	12 ½	13	14

Men:

Breast	24	36	38	40	42	44	46	48	50
Neck	14	14 ½	15	15 ½	16	16 ½	17	17 ½	18

Pattern Counter Catalogs are also a good source for sizing/measurement information. The following information and text was taken directly from a **1929 Butterick Counter Catalog**. If you look closely, you will see some differences between these from Butterick shown below and the measurements listed above from The Pictorial Review Pattern Company.

LADIES

BUST	32	34	36	38	40	42	44	46	48	50	52	Ins.
WAIST	27	28	30	32	34	36	38	40	42	44	46	Ins.
HIP MEASURE	35	37	39	41	43	45	47 ½	50	53	56	59	Ins.

ARM MEASURE

BUST	32-34	35-37	38-40	41-44	45-47	Ins.
ARM MEASURE	11	12	13	15	15	Ins.

MODEL A ERA FASHION AND STYLE

MISSES

Young girls of the same age vary in size. In addition to the measures, the average size is given on the pattern envelope to make clear that the pattern is cut on misses' lines, but the only way to get the correct size is to buy by measures, just as one would for a woman's pattern. The measures are taken just as for women.

BUST	31	32	33	34	35	36	37	38	Ins.
SIZE	13	14	15	16	17	18	19	20	
WAIST	26	27	27 ½	28	29	30	31	32	Ins.
HIP	34	35	36	37	38	39	40	41	Ins.
Socket Bone to Floor	50	52	53	54					Ins.

JUNIORS

Girls of the same age vary in size. In addition to the measures, the average size is given on the pattern envelope to make clear that the pattern is cut on juvenile lines, but the only way to get the correct size is to buy by measures. The bust measure only is needed for patterns of dresses, coats and underwear (except drawers). Drawers should be bought by the waist measure.

BUST or BREAST - Take measure over the bust or breast, close up under the arms and straight across back. This measure should always be taken from the back and the tape should be easy, not snug.

WAIST - Take measure at natural waistline, drawing tape snug but not tight.

Alteration in Length is explained on the Deltor, which is enclosed in every Butterick Pattern envelope.

BUST	31	32	33	34	35	Ins.
SIZE	13	14	15	16	17	
WAIST	26	27	27 ½	28	29	Ins.
HIP	34	35	36	37	38	Ins.
Socket Bone to Floor	50	52	53	54	--	Ins.

GIRLS

BREAST	24	25	26	27	28	29	30	31	32	Ins.
SIZE	6	7	8	9	10	11	12	13	14	
WAIST	24	24 ½	25	25 ½	26	26	26 ½	26 ½	27	Ins.
Socket Bone to Floor	36	38	40	42	44	46	48	50	52	Ins.

CHILDREN

BREAST	21	22	23	23 ½	24	Ins.
SIZE	2	3	4	5	6	
WAIST	21	22	23	23 ½	24	Ins.
Socket Bone to Floor	28	30	32	34	36	Ins.

INFANTS

BREAST	19	20	21	22	Ins.
SIZE	½	1	2	3	
WAIST	19	20	21	22	Ins.
Socket Bone to Floor	21	24	28	30	Ins.

For additional reading about this subject you will want to read [Sewing Patterns During the Model A Years](#), by Janet Gundlach. Janet offers general pattern history as well as practical tips and advice when working with vintage patterns. Janet is a member of the Gallopín' Gertie Model A Club and is an avid seamstress. She has also served on MAFCA's Era Fashion Committee as a member and as the Chairperson. This article can be found on the MAFCA website at: http://www.mafca.com/downloads/Fashions/Sewing_Patterns.pdf.

It is with much gratitude and thanks to Helen Christensen from the Santa Clara Valley Model A Club and her wonderful team of volunteers that these patterns have been painstakingly preserved for our use today. In addition to their pattern preservation, they have put together a fabulous catalog available for purchase through MAFCA or viewing online on the MAFCA website. It should be noted that although our Pattern Catalog has a large number of patterns available, there are not all sizes available for each pattern in this collection. For more information about the MAFCA Pattern Project, please visit the MAFCA website at: http://www.mafca.com/patterns/patterns_history.html.

Sources: [1929 Butterick Counter Catalog](#)

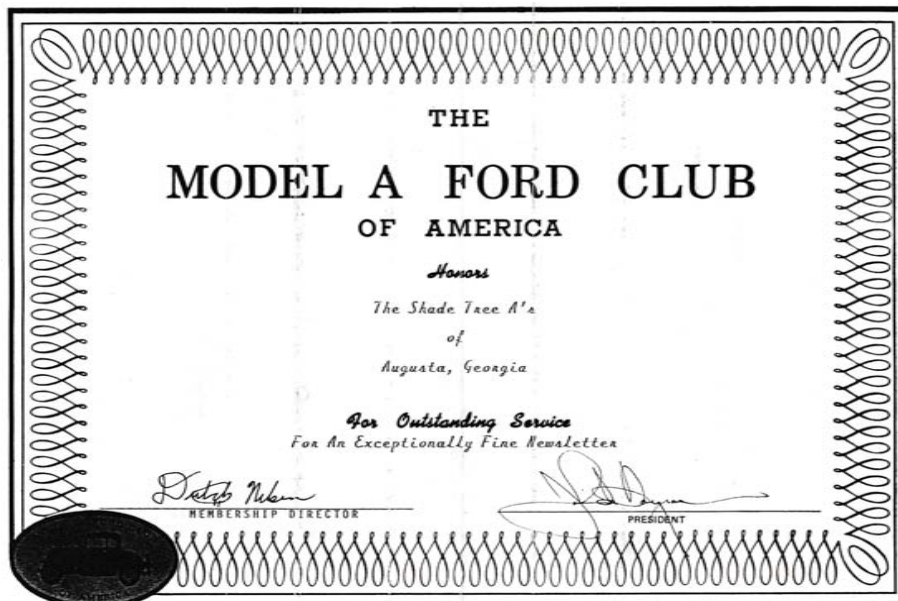
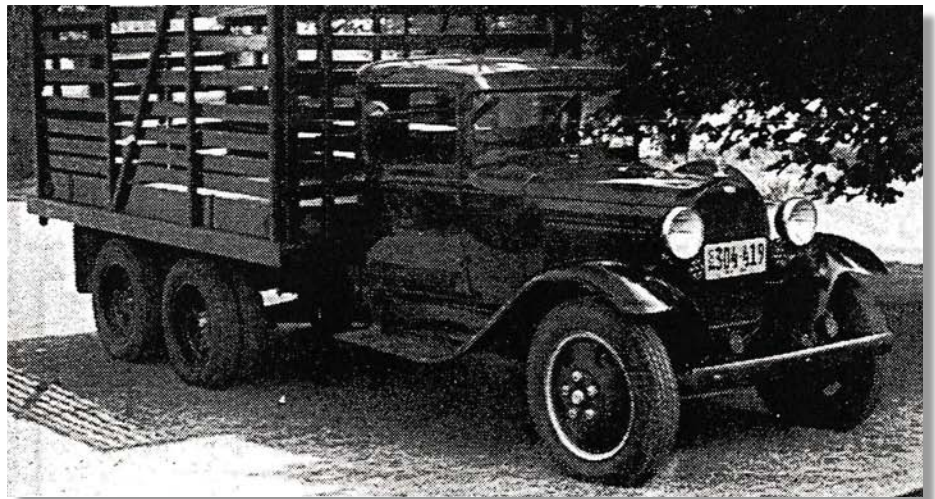
[The Mary Brooks Picken Method of Modern Dressmaking](#), The Pictorial Review Company, NY, 1925.

THE SHADE TREE A'S – THIRTY YEARS AGO



The 1985-2005 *Shade Tree A's Newsletters* are now available on the Shade Tree A's website. They can be accessed via the same "button" as the other *Newsletters*, but they are password protected. The same password used to access the member roster is used to access the *Newsletters*. Thank you Dan Perla for scanning these and posting on the website.

The January 1993 issue of the *Shade Tree A's Newsletter* announced an upcoming garage tour to six member's garages in the Aiken area. Jim McPherson provided some relevant technical advice which is reprinted in the Technical Topics section of this *Newsletter*. Also noted in the *Newsletter* was an award from the Model A Ford Club of America for "An Exceptionally Fine Newsletter". An improved reprint of the book, *Model A Ford Construction - Operation - Repair for the Restorer*, was reviewed. This book is still available from Amazon for about \$60. The Meeting Minutes reported that the Club had twenty-three Model A's on hand for the Harlem Christmas parade. The *Newsletter* included an article on a Model AA 10-wheeler truck. Lots of good and juicy gossip was also presented including news of Frank Knapp's 1930 Town Sedan.



TECHNICAL TOPICS

The following article is from the January 1993 issue of the *Shade Tree A's Newsletter*.

AUTHENTICITY and TROUBLESHOOTING

By Jim McPherson

The press in cone grease fitting was used to lubricate several components in the chassis. It was originally cadmium plated. The originals had rougher machine marks around the cone and had a slightly wider diameter at the input end, 0.200 as opposed to 0.180 for the reproduction.

The lower radiator hoses were 2 3/4" in length and are described as having a wide red stripe running the length of the hose. Original hoses appear to have a rougher edge and coarser fabric around the outside than the reproductions.

With the cooler weather some members have experienced difficulty in getting their A's to warm up so that the carburetor may be adjusted for proper performance. Those members who have installed a thermostat in the cooling system report faster warm up (with reduced engine wear) and better engine performance (running and Idle) due to a constant engine temperature.

Member Advertisements

Deadline for submittal – 20th of the month – Send submittals to newsletter@ShadeTreeAs.org

FOR SALE Model A tapered muffler for sale. Has been used but in excellent shape. Painted with black heat paint similar to Aries mufflers. Would be great for a driver. \$145. Contact Dan Perla (706-373-5730) or Jim McPherson (706-564-0120).

FOR SALE Original Model A Ford Distributor Housings, \$25.00 each. The reproductions are \$77.50 (plus tax, shipping and handling), and we all know how great reproduction parts are. Jim McPherson, 706-564-0120.

FOR SALE: Model A era metal trunk. It has been restored and painted to match the lower body color (Chicle Drab). You can paint it black (the original color) or have your local paint store match the body color of your Model A, and put the paint in a spray can for you to paint. It has a custom trunk rack made to fit the Model A. The rack needs to have the rust removed and painted (black). Current trunks are made of plywood and covered with Naugahide. They are \$599.00 and the new trunk racks are \$249.00. \$400.00. Call or text Jim McPherson. 706-564-0120. [Robbie Jones has looked at this trunk too. You can also contact him for additional information. - Ed.]

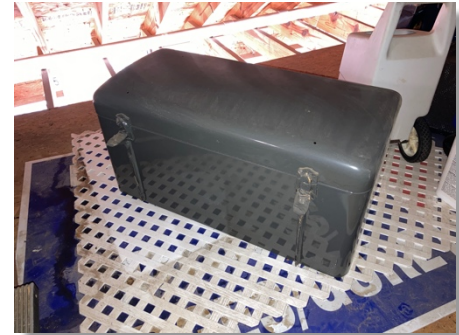


Photo by Robbie Jones

WANTED I had someone in the Augusta area call me today, looking to purchase a Model A Coupe with a rumble seat. If any of you have one available for sale or know of one that is available for sale, please get in touch with me and I will give you their phone number. This will need to be a good running/drivable car, not something that will need to be restored or extensive repairs. This person is not currently a member of a Model A Club. Thanks, Don Turley

Paid Advertisements

SHADE TREE A'S NEWSLETTER SPONSORS


Our thanks to the following sponsors! Their generosity supports this Newsletter and the Shade Tree A's! Please remember these folks when you need a service they offer. And please, tell them you appreciate their support of our Club!

Bentley's
Antique Auto Service, Inc.

We are a Full Service Shop, specializing in Model A Fords
We offer Award-Winning Paint and Bodywork
Expert Service and a Complete Machine Shop

Enjoy the Drive...

678-407-1947



**Bert's Model "A"
Ford Center**

2767 S. Tejon, Englewood, CO 80110
ph# 303-293-3673 or 800-321-1931
email address - parts@modelastore.com
www.modelastore.com

We buy and sell original and reproduction Model A Ford parts!

BRATTON'S
ANTIQUE AUTO PARTS



800-255-1929 Phone
 www.brattons.com
 800-774-1930 Fax
 1506 Back Acre Circle
 Mount Airy, MD 21771

Your source for Quality Model A Ford Parts since 1976

1003 ALEXANDER DRIVE
 AUGUSTA, GA 30909

P.O. BOX 212072
 MARTINEZ, GA 30917

D&M 
 D'Antignac & Merritt Heating & Air, Inc.
 Turn To The Experts.

(706) 667-0196 Doug Wilson

**FAIRWAY FORD IS YOUR
 BEST PRICED
 FORD DEALER**

706-854-9200 | FairwayFordAugusta.com



FAIRWAY
 FORD/EVERANS GEORGIA

POWDERCOATING
 Professional Powdercoating Service

JAPW Racing Inc.

200 Rose Street
 Martinez, GA 30907
 info@jrpwrcing.net

Jimmy Rivers
 706-863-1206

Mike's "A" Ford-able Parts
Mike Butcher 

124 Model A Drive, Maysville, GA 30558
 email: mike@mikes-afordable.com - www.mikes-afordable.com
 Fax: 706 652 2492 - Phone: 706 652 3866
 1 888 TRY MIKE (879 6453)



Specialising in 1928 - 1931 Model A Ford Parts

"ONE MILE AHEAD"
Smith and Jones
 Antique Auto Parts
 60 Wisconsin St., W. Columbia, SC 29170
 803/822-4141 FAX 803/822-8477



Quality Parts
 Same Day Shipping
 Established 1972
 142 Page Catalog
 Order Desk 800-422-1928

 www.snjparts.com

The World's Largest Selection of 1909-31 Ford Parts

Snyder's
ANTIQUE AUTO PARTS

12925 Woodworth Rd. • New Springfield, OH 44443
 Toll Free Ordering (888) 262-5712
 or FAX (888) 262-5713
 Order On-Line @ www.snydersantiqueauto.com



 **FREE Fully Illustrated CATALOG**
 \$10.00 outside the U.S., Canada, & Mexico

Joseph E. Spires
 ATTORNEY-AT-LAW

Ward & Spires, LLC
 445 Walker Street
 Augusta, Georgia 30901

Phone (706) 724-2640
 Facsimile (706) 724-2642
 E-mail: Wardspires@aol.com