

# SHADE TREE A'S

## NEWSLETTER

November 2023

Volume 50

Number 11



4424 Reynolds Street  
Hephzibah GA 30815-7909  
Website: <http://www.ShadeTreeAs.org>



<b>President</b> Craig McMullin	803-341-8955 pres@ShadeTreeAs.org
<b>Vice President</b> Andrew Morse	706-834-2342 vp@ShadeTreeAs.org
<b>Secretary</b> Frank Knapp	706-736-5238 sec@ShadeTreeAs.org
<b>Treasurer</b> Stuart Smith	706-825-9441 treas@ShadeTreeAs.org
<b>Tour Director</b> Charles Weaver	706-373-9422 tourdir@ShadeTreeAs.org
<b>National Director</b> Matt Barrett	706-799-3699 nationaldir@ShadeTreeAs.org
<b>Board of Directors</b> Darren Riley	803-230-9510 bod1@ShadeTreeAs.org
<b>Board of Directors</b> Jim McPherson	706-564-0120 bod3@ShadeTreeAs.org
<b>Membership Coordinator</b> Frank Knapp	706-736-5238 membership@ShadeTreeAs.org
<b>Newsletter Editor</b> Robbie Jones	706-860-2758 newsletter@ShadeTreeAs.org
<b>Photographer</b> Sheila McPherson	706-592-4835 photographer@ShadeTreeAs.org
<b>Era Fashions</b> Anne Neely-Beck	478-945-3736 erafashions@ShadeTreeAs.org
<b>Webmaster</b> Dan Perla	706-855-5730 webmaster@ShadeTreeAs.org



## CONTENTS

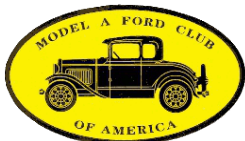
### Columns

Off the Running Board	3
Meeting Minutes	3
Club Calendar	5
Announcements	
Shade Tree A's Member News	6
Refreshment Schedule	6
Birthdays	6
Other Sundry Announcements	7
Recent Events	
Oliver Hardy Parade	14
Our Last Tech Session for 2023?	15
Model A Era Fashion and Style	17
The Shade Tree A's - Thirty Years Ago	20
Technical Topics	21
Advertisements	22

### On the Front Cover

The Shade Tree A's gathered around Larry DuVall's 1931 Coupe for a diagnostic evaluation of an unusual engine noise. Cover photo by Matt Barrett.

## SHADE TREE A'S MODEL A CLUB



The Shade Tree A's Model A Club is a non-profit organization dedicated to the preservation and the restoration of the Model A Ford automobile. Shade Tree A's annual dues are only \$25. Members are urged to join the Model A Ford Club of America ([www.mafca.com](http://www.mafca.com)) and the Model A Restorer's Club ([www.model-a-ford.org](http://www.model-a-ford.org)) to enjoy the benefits of these national organizations including their respective magazines: *The Restorer* (MAFCA) and *Model A News* (MARC). The Shade Tree A's club is also a member of MAFFI, the Model "A" Ford Foundation, Inc.



#### CONTACT INFORMATION

4424 Reynolds Street  
 Hephzibah GA 30815-7909  
 Website: <http://www.ShadeTreeAs.org>

#### ABOUT THIS NEWSLETTER

© 2023 Shade Tree A's, except as noted.  
 Please contact Robbie Jones at [Newsletter@ShadeTreeAs.org](mailto:Newsletter@ShadeTreeAs.org) concerning reprinting of articles, illustrations, or photos.

## OFF THE RUNNING BOARD

*Craig McMullin - President*

It's a great time of year to tour with your Model A!! The weather is beautiful, there are lots of community events to partake and gas prices are coming down in our area of the southeast. So, your Shade Tree A's Club has scheduled two wonderful tours this fall.

The first tour is to Hickory Knob State Park to have lunch at their wonderful restaurant alongside Clark's Hill Lake and after lunch to the historic village of Willington, SC on Saturday, November 4th.

The second tour is on Friday, December 1<sup>st</sup> to Wrens, GA to tour the famous Stuckey's Pecan Candy Factory. Our host is Stephanie Stuckey whose grandfather started the company in 1937 driving a Model A Ford. We will also have lunch at the well-known Peggy's restaurant in Wrens after the tour.

Both tours are not to be missed as they are well planned, interesting scenic drives, just long enough but no too long and will get your Model A prepared for some more challenging tours in 2024. Details of each tour are in the following pages of this newsletter or you can call me with any tour related questions. We are going to have a great time so come join us!

Ahooga,

*Craig McMullin* - President

## MEETING MINUTES

*October 9, 2023*

*Richard's Garage*

*Respectfully submitted: Frank Knapp - Secretary*

The monthly meeting of The Shade Tree A's was held October 9, 2023 in the clubhouse meeting room at Richard Dunevent's garage. The meeting was called to order by President Craig McMullin at 7:04 PM welcoming all twenty-six members and guests present. Our two guests, Jeff Dowling and Cooper Lockhart, were introduced and welcomed by the club. Only one member contributed to our Name Tag Penalty Cup.

President Craig made a special award presentation to Billy Hughes, our only founding member who joined when The Shade Tree A's were chartered in June, 1973.

Matt Barrett offered our "Joke of the Month" and President Craig noted several October birthdays.

Prayers go out for Marsha Barrett who is recovering from ankle surgery and Pat Hughes who suffered a recent fall.

Vice President: Andrew Morse announced our technical program for the evening will be a presentation by Jim McPherson on the 2023 MARC National Meet.

Treasurer: Stuart Smith reported expenditures amounted to \$580.19 while deposits totaled only \$205.00 leaving a negative balance for the month.

### MONTHLY MEETING TIME & LOCATION

Meetings are held on the second Monday of each month at Richard Dunevent's garage, 4338 Owens Road, Evans, Georgia. Meetings begin at 7:00 PM and are followed by refreshments.

# MEETING MINUTES

*Continued*

A motion was made and seconded to approve the Treasurer's Report and the September Meeting Minutes as published in *The Newsletter*. That motion passed by unanimous vote.

National Director: Matt Barrett reported pictures will be included in our activities update published in the Chapter News section of the next issue of *The Restorer*.

No reports were given from our Newsletter Editor or Tour Director. Also, nothing was offered under "Show & Tell".

Old Business: Discussion of past club events and tours included our 50<sup>th</sup> Anniversary Tour, the Oliver Hardy Festival Parade and comments from members who attended this year's Hershey Swap Meet. President Craig also announced a new MAFCA/MAFFI 50 Year Award Program for qualifying MAFCA clubs. The STA's will receive a commemorative "Brick" at the Gilmore Museum Brick Sidewalk.

New Business: The following topics of interest were discussed in detail. The 2024 Election of Officers, The Monroe Wade Award nominations and our upcoming tour to Hickory Knob State Park November 4<sup>th</sup>. Also mentioned were a proposed Saturday Tech Session October 21<sup>st</sup> and our Annual Christmas Party December 16<sup>th</sup>.

President Craig announced a future tour to the Stuckey's Candy Factory in Wrens, GA is being planned. Details will be forthcoming.

Technical Program: Due to technical difficulties, Jim McPherson's program will be presented at a future meeting.

There being no further business, the meeting was adjourned at 7:50 PM after which members were treated to ice cream, cookies and soft drinks provided by Stuart Smith, John Neumar and Brandon Carter.



Shade Tree A's President, Craig McMullin, presents a special award to Billy Hughes. Billy is the only Shade Tree A's member who was a founding member of the Shade Tree A's which was chartered as a MAFCA Chapter in June, 1973. Photo by Eric Shogren

## CLUB CALENDAR

### *Shade Tree A's Events*

#### November

- 4 Shade Tree A's Lunch Tour to Hickory Knob State Park, details to come
- 13 Shade Tree A's Meeting, 7:00 PM, Richard's garage (Technical Program – *MARC National Meet*, presented by Jim McPherson)

#### December

- 1 Stuckey's Pecan Factory Tour and Lunch, depart IGA store on corner of Deans Bridge and Barton Chapel Roads at 10:00 AM
- 16 Shade Tree A's Christmas Party, Jack Sheppard's Country Store, 539 Chamblin Road, Grovetown, Georgia
- 28 Shade Tree A's Board of Directors Meeting (tentative date)

#### January 2024

- 1 Shade Tree A's New Year's Day Breakfast, 8:00 AM, Cracker Barrel at I-20 and Belair Road
- 8 Shade Tree A's Meeting, 7:00 PM, Richard's garage (*Upholstery in a Post LeBaron Bonney World* – Robbie Jones)

#### Every Wednesday at 11:30

Join the Shade Tree A's for lunch at Cicis Pizza on Wheeler Road

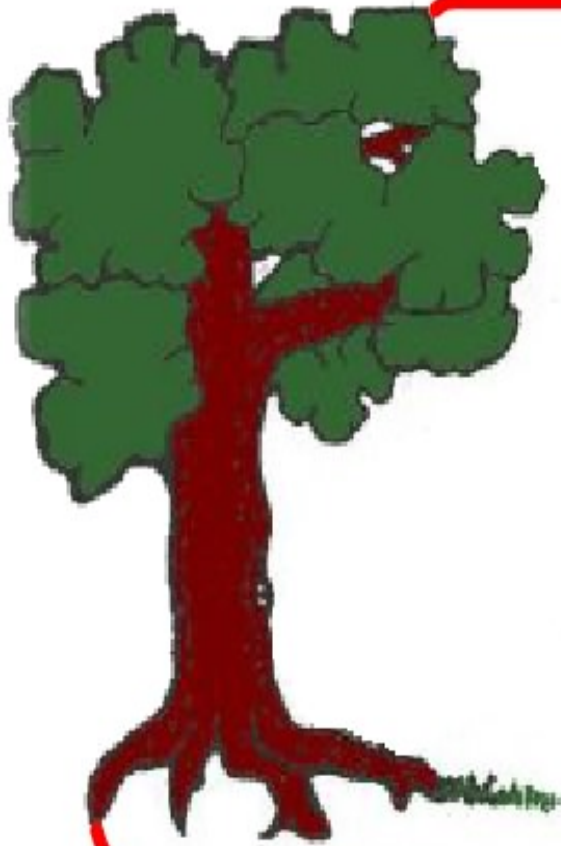
***TBA - To Be Announced***

### *Other Events of Interest*

#### November

- 3-5 Richland Creek Antique Fall Festival
- 11 Veterans Day Parade, Aiken, SC
- 16-19 Swap Meet, Moultrie, GA
- 18 Pioneer Days, Lincoln County Historical Park, Lincolnton, GA, 10:00 AM - 3:00 PM

# ANNOUNCEMENTS



## Shade Tree A's Member News

- Please continue to keep the following Shade Tree A's members in your thoughts and prayers:
  - Marsha Barrett recovering from recent ankle surgery, physical therapy soon
  - Janet Neumar battling lung cancer
  - Pat Hughes who suffered a recent fall

*Send items for Shade Tree A's Member News to:*



## Refreshment Schedule

November

**Matt Barrett, Steve Teal**

December

No refreshments due to the Christmas party

January

Volunteers needed

**The first person listed is the primary coordinator for the month**



## November Birthdays

- 15 Skip Stewart
- 18 William Gordon
- 21 Sandy Stewart
- 25 James Beck

## ANNOUNCEMENTS

### Tour to Hickory Knob State Park

The Shade Tree A's will be touring to Hickory Knob State Park in McCormick County for lunch and then on to Willington, SC only a few miles away. The plan is to meet at Richard's Shop by 9:30 AM and leave at 10:00 AM for Hickory Knob State Park Hotel and Restaurant. Deborah Fuller has made reservations for a separate dining room at Hickory Knob so we can all sit together during lunch. Deborah has also planned a very special visit to the town of Willington, SC after lunch that played a major role in the areas history. You don't want to miss this exciting and beautiful fall tour around Clarks Hill Lake!

We already have about 10 Model A's that are planning to go on this tour but I need to hear from the rest of you. I would like to give the Restaurant an accurate headcount so they can plan accordingly for lunch. So, if you are planning to join this touring group on November 4<sup>th</sup>, please send Craig McMullin a quick email indicating the number of people in your party.

### Stuckey's Pecan Factory Tour and Lunch

Come join us on Friday, December 1, 2023, to see first-hand how one of your favorite candies are made. We will travel by Model A Ford of course to Wrens, GA to the home of the Stuckey Candy Factory and Retail Store. We will leave from the IGA parking lot located on the corner of Deans Bridge Road and Barton Chapel Road at 10:00 AM

and tour to Wrens for an in-factory tour and shopping. Stephanie Stuckey (Chairperson of the Company), whose grandfather founded Stuckey's Candies in 1937 while driving a Model A Ford, will be our host. After the Stuckey's factory tour and before heading back home, we will have lunch (on your own) at the famous Peggy's Restaurant in Wrens.



**ANNOUNCEMENTS**

*Shade Tree A's Christmas Party*

**December 16, 2023 at 6:00 PM**

Join us for the Shade Tree A's Christmas Party. This year's party will once again be at Jack Sheppard's Country Store, 539 Chamblin Road, Grovetown, Georgia

If you've never been to Jack's, his place is a real treat and a great place for our Christmas Party.

Submit your payment to Dan Perla. PLEASE pay with either correct bills or preferably by check. The cost is \$25 per person. If you wait till the night of the party, you must pay with correct bills or check. Make checks out to the SHADE TREE A's.



Photo by Robbie Jones

**Shade Tree A's Nominations for 2024**

The Shade Tree A's Nominating Committee presents the following nominations for 2024:

- President: Craig McMullin
- Vice President: Andrew Morse
- Secretary: Frank Knapp
- Treasurer: Stuart Smith
- Board of Directors: Darren Riley
- Board of Directors: Jim McPherson
- National Director: Steve Spencer
- Tour Director: Charlie Weaver, Jr.

Jim McPherson,  
Chairman, Nominating Committee



# ANNOUNCEMENTS

## 2023 Monroe Wade Award Nominations

It's that time of year for the members of the Shade Tree A's to make their nominations for the Monroe Wade Award. The Monroe Wade Award honors a current Shade Tree A's member who promotes and encourages the furtherance of the Model A hobby. The member can have accomplished this in any of the ways listed below:

- A club member who goes out of his or her way to help other members repair or maintain their Model A's.
- A club member who:
  - a. Writes an outstanding article for the Shade Tree A's Newsletter regarding repair and restoration, or who brings to light new information about the Model A.
  - b. Presents an outstanding program regarding repair and restoration or who provides new information about the Model A at a club meeting.
- A club member who shows dedication to the Model A hobby and to the club by:
  - a. Driving his or her Model A on a substantial number of club tours and events.
  - b. Driving his or her Model A great distances, demonstrating that the Model A is not only fun but a worthy means of transportation.
  - c. Is an outstanding representative of the Shade Tree A's at national meets and tours or local community events, thus serving as a Shade Tree A's club ambassador.

### Monroe Wade and the Shade Tree A's

New members might wonder who Monroe Wade was. Monroe was a man who loved Model A's and who loved the Shade Tree A's club! A man you could **ALWAYS** depend on to help a fellow member regardless of the time or weather. Monroe worked hard for the club and you could usually find him leading a tour or carrying in refreshments or door prizes that he had talked some local business into donating.

After restoring a 1930 Tudor that had belonged to his Mother, Monroe went on to restore a number of other A's. All of them were award-winning cars!

After his death in 2003, his wife Betty and his daughters, Deborah and Joyce, have continued to be active in the club and to drive Monroe's beloved cars.

Monroe was a great friend and we miss his enthusiasm and his ability to make a Model A purr like a contented kitten.

The annual award is our way of remembering Monroe and we are delighted to have Betty and the Wade family to be active in the club.



Nominations for the Monroe Wade Award may be submitted to a member of the Award committee: Gerald Melchiors, Don Turley or Andrew Morse. Please provide a brief explanation with your nomination explaining why you believe the person deserves the award.

## ANNOUNCEMENTS

*Model A Ford*  *Club of America*  
250 So. Cypress La Habra, California 90631-5586  
562-697-2712

---

### October 2023 President's Flying Quail Article

If you missed attending the 2023 MAFFI Model A Days event in Hickory Corners, MI during mid-September, you missed a great Model A gathering. Attendance was strong, lots of Model A's were on display and there were plenty of activities and events to keep a person very busy during the two days.

MAFCA had a tent/canopy on site with some MAFCA items for sale and a lot Model A advice and information available for free. We were in a prime location and mostly had a continuous stream of visitors throughout the meet. It was great to see old friends and make new ones. A special thanks to Dave and Diane Libbey, Doug and Nan Linden, Kay Lee, Jay McCord and Rick Black for helping to man the tent. Their help was invaluable for maintaining a MAFCA presence at the tent.

Voting is underway for the 2023 Board of Directors election. By now you should have received your ballots and membership renewal notice in the mail. Please vote. This your opportunity to make a difference and help choose the new directors to serve in 2024. Nothing is as powerful as your individual right to vote for members of the MAFCA leadership team. Also, an early renewal of your membership is always appreciated

MAFCA will once again have a tent as the Hershey Swap Meet in Hershey, PA from October 3 – 6. Office Manager, Sandr Aguirre along with Chet Wojick, SR and Chet Wojick, JR will lead a group of volunteers manning the tent and providing daily seminars on relevant Model A topics. Also, Sandra will have a host of MAFCA merchandise items for sale. Good time to pick up a MAFCA piece of clothing, a relevant Model A book or even Christmas cards and save on the shipping costs.

Also, it is time to make sure you are registered for the MAFCA National Awards Banquet being hosted by the Santa Maria A's and being held in Santa Maria, Ca. Registration information is available on the MAFCA website and by contacting the Santa Maria A's. I'm looking forward the meeting and the visit to

## ANNOUNCEMENTS

*Model A Ford*  *Club of America*  
250 So. Cypress La Habra, California 90631-5586  
562-697-2712

---

Hearst Castle. Visiting Hearst Castle has been on my bucket list for years and it will be nice actually check that one off the list. I recently spoke with event organizers and they would appreciate early registrations. This will help them with planning and would assure you a spot on the tours. There is a chance the tours to Hearst Castle and Solvang (Danish Capital of the US) could sell out.

I would like to announce that Terry Whittington has resigned as our Constant Contact/Flying Quail Newsletter administrator. Please join me in thanking Terry for his efforts and time managing our Flying Quail Newsletter. In the interim Will Langford will the Administrators role, at least on a temporary basis. Thanks, Will for volunteering. One comment about the newsletter, please feel free to send Will (at [chaptercoordinator@mafca.com](mailto:chaptercoordinator@mafca.com)) information that you think should be shared with the Flying Quail Newsletter audience. Please bear in mind that Will will publish the newsletter but he is not responsible for creating all the original content. Please share your relevant stories.

See you down the road! *Robert Bullard*

## Shade Tree A's Member Dues

**ATTENTION**

Shade Tree A's member dues for 2024 are due by the end of the year. Please see the club Secretary, Stuart Smith to make your payment. Checks or exact cash with your name attached are appreciated. Dues for 2024 are \$25.

## ANNOUNCEMENTS

# Ford's Piquette Plant Celebrates the 115<sup>th</sup> Birthday of The Model T

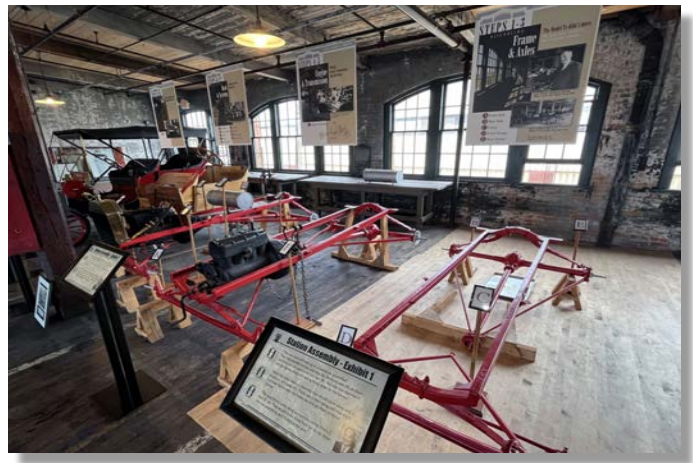
*Story by Robbie Jones*

*Photos by the Hemmings author, Barry Kluczyk*

Hemmings Magazine recently published an article about the celebration of the 115<sup>th</sup> anniversary of the Model T at Ford's Piquette Plant. Although the article is not specifically about our Model A's, it's still an interesting article about the Model A's predecessor.

The article states that only the first 12,000 of the more than 15 million Model T's assembled between 1908 and 1927 were produced at the Piquette Plant, along with seven other Ford automobiles that preceded it. Production was thereafter moved to Highland Park. The full article can be found at the following web address:

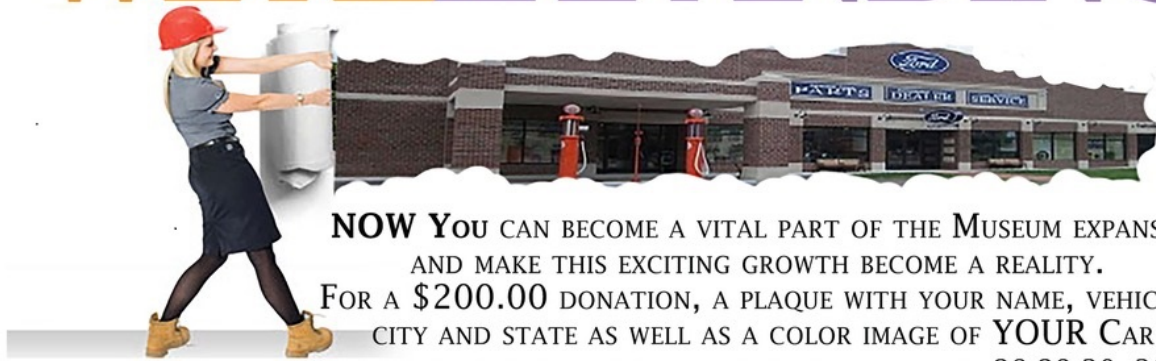
<https://www.hemmings.com/stories/ford-s-piquette-plant-celebrates/>



ANNOUNCEMENTS

NOW YOU CAN BE PART OF YOUR MODEL A MUSEUM EXPANSION!!

WE'RE EXPANDING



NOW YOU CAN BECOME A VITAL PART OF THE MUSEUM EXPANSION AND MAKE THIS EXCITING GROWTH BECOME A REALITY.

FOR A \$200.00 DONATION, A PLAQUE WITH YOUR NAME, VEHICLE, CITY AND STATE AS WELL AS A COLOR IMAGE OF YOUR CAR WILL BE PLACED ON A DISPLAY BOARD BY THE YEAR 28,29,30, 31.

THESE DISPLAYS WILL BE INSIDE THE NEW ADDITION OF THE MUSEUM. THIS IS A GREAT WAY TO SHOW YOUR CAR, AND SUPPORT THE MUSEUM.

THEY ALSO MAKE GREAT GIFTS FOR PARENTS, GRANDPARENTS AND GREAT GRANDPARENTS. BE PART OF AN EVER LASTING LEGACY TO OUR GREAT MODEL A FORDS. ACTUAL SIZE IS 4.5" x 2".



FOR MORE INFORMATION ON THE "MY A PROGRAM" PLEASE CONTACT VAL MARON AT 847-951-5858 OR THEMYAPROGRAM@GMAIL.COM

## RECENT EVENTS

### Oliver Hardy Parade

*Photos by Kent Carruthers, Darrell Henderson and Craig McMullin*



## RECENT EVENTS

### Our Last Tech Session for 2023?

*Story by Jim McPherson*

*Photos by Matt Barrett Except as Noted*

The Shade Tree A's held a Tech Session on Saturday October 21<sup>st</sup> at Richard's garage. Steve Spencer brought his 1930 Coupe in for a front end alignment. We used a new high tech alignment method, used by Darren Riley on his new Dodge Ram Pick-up. We used one of the treads on each front tire and measured the distance between them, on the front and rear of the tire, with the measurement the customary 4" off the ground, using 2x4 blocks. The alignment on Steve's Coupe was near perfect.

Matt Barrett brought in his 1931 Victoria for a headlight improvement, installing new LED bulbs. He had also discovered a problem with the rear backrest seat cushion, which we repaired. On the Victoria and A-400, the backrest cushion hinges forward to allow storage in the bustle.

Larry DuVall drove his 1931 Coupe in for a diagnostic evaluation of an unusual engine noise. Using brake cleaner, we eliminated a manifold gasket leak and a cracked intake or exhaust manifold leak. Shorting out the sparkplugs revealed the noise stopped when #2 sparkplug was shorted out, but it was getting fire to the plug. Swapping plugs revealed the plug was firing. Doug Wilson used his carburetor expertise to enrich the fuel mixture with a lubricating oil, in case the problem was a stuck or sticking valve. Richard's yard got a free mosquito treatment! In the end, Larry thought his Model A was running 50% better and he could now feel more comfortable driving it. Larry is going to conduct further tests to identify the problem.

Also attending the Tech Session and lending a hand in the repairs were Richard Dunevent, Frank Knapp, Craig McMullin, Jim McPherson, Ralph Neitzke, Dan Perla, and Stuart Smith. Thanks to Sheila McPherson for preparing lunch.



RECENT EVENTS

Our Last Tech Session for 2023?

*Continued*



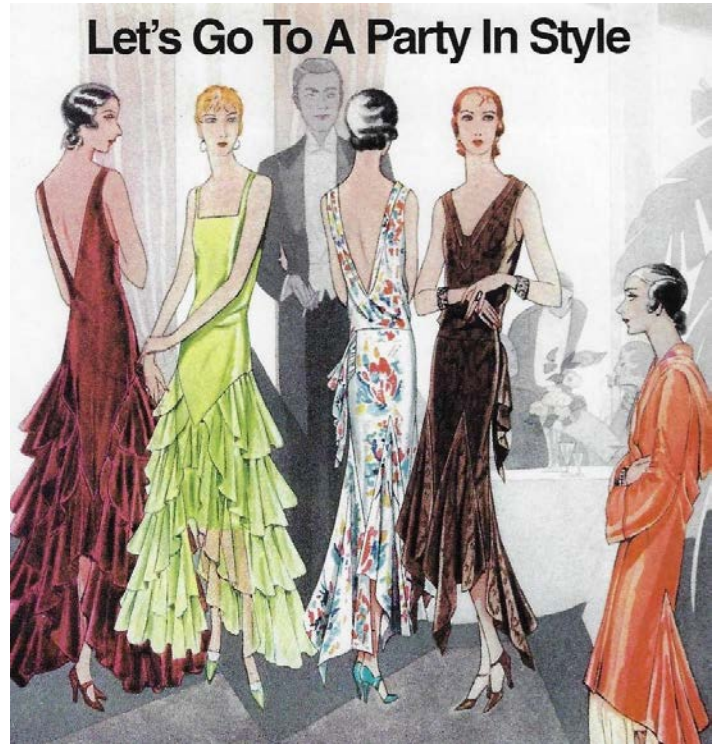


## MODEL A ERA FASHION AND STYLE

### A Backward Interest in Design

By Lynda Davis, Dallas and Fort Worth Model A Clubs

In their 1928 winter magazine, the Fifth Avenue luxury department store B. Altman and Company describes evolving fashion trends as the “playful imagination of fashion [that] is constantly conceiving delightfully fanciful things, some of which live while others wither and die. How frivolous one can feel in billows of tulle and chiffon—in a youthful bouffant frock, . . . or, when dining and dancing in crowded spaces, how smart the sophisticate appears in an evening gown of more restraint—one that falls in straighter, softer lines and follows the body rather [definitively].” Altman’s observation aptly reflects the evolution of style during the 1920-30 decade.



McCalls, October 1929. Illustration taken from *The Fashion Files*, p 70.



“Artificial silk bias-cut evening gown by Donguy of Paris, ca. 1930s”

The decade dawned with women’s voting rights and freedoms (leading to shorter dress hems) and ended with the cataclysmic crash of a booming economy (in which hem length dropped along with stocks). B. Altman’s statement marks the fashion-pendulum swing from the frilly garden party and elaborate and beaded flapper dresses (with hem lines reaching their height in 1927 to just below the knee), to the advancing trend towards more conservatively-styled, longer and sleeker gowns “of more restraint,” what Altman called the “straightening out’ feeling.” These dresses were typically made from velvet, heavy silk, silk crepe de Chine, silk pongee, lace, and the new Rayon, and they hug the body in ways that Jean Harlow would later make famous.

MODEL A ERA FASHION AND STYLE



The most interesting notation in Altman’s magazine describes a “decided back-ward interest in formal gowns.” These gowns frequently have a front that appears “quite plain”; however, when “backs are turned ethically, bodices and waistlines are found to be attractively elaborated” with “stress—and often *strass* [rhinestone adornments]—on many a low decollete” (*sic*). Just a few years earlier, shorter hemlines exposed women’s legs, increasing hosiery sales and making ladies’ legs an area of interest. As fashion approached the 1930s, hemlines dropped to the mid-calf and longer, shifting emphasis from the legs to the back, and often those backs were bared to the waist.

Above: Backless gowns featured in *McCalls Magazine*, January 1930, and found in *The Fashion Files* Notice the backdrop necklace on the model left of center.  
 Right: A dancing couple. Picture from 1930, *Modern Ballroom Dancing*, 1930, by Lillian Ray

The likely reason for displacing the focus to the dress-back may have something to do with dancing. With shorter dress hems, women had free range of movement, enabling them to enjoy dances such as the Charleston. But with longer dress lengths, inhibited movement likely encouraged slower dancing, “cheek to cheek.” Altman’s magazine speculates that it is from behind that the “sophisticate” is better able to show off her formal evening dress when “dancing in crowded spaces.”



MODEL A ERA FASHION AND STYLE

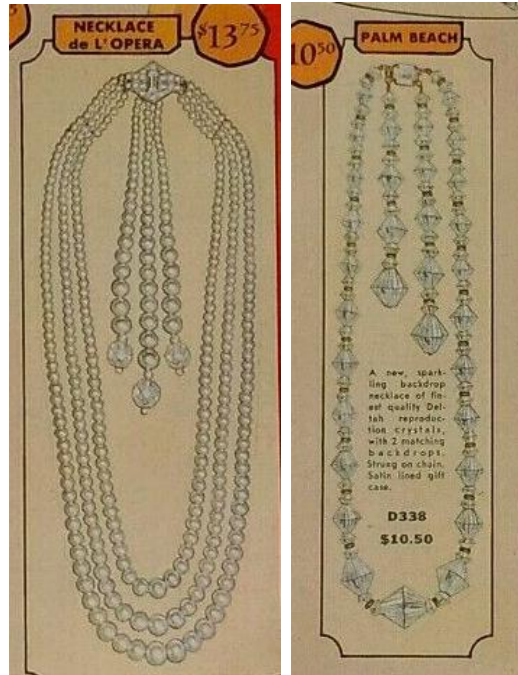


Photo on left shows a model from the 1928 *La Gazette du Bon Ton* which also appears in MAFCA's Fashion Files, p 68. The backdrop necklaces above appear in the annual illustrated catalog of Leonard Krower & Son's 1931.

Of course, bobbed hair and bared backs do provide nice landscapes for ladies to show off their jewelry. How often have we heard tales of our grandmothers or great grandmothers wearing their long necklaces backwards down their lovely backs. To illustrate a bit of *strass*, as Altman puts it, look to the 1931 illustration above left and to MAFCA member Tammie Jones below. Here the fashionable models wear rhinestone clips at their back décolleté. Then, too, capitalizing on the desire to accentuate the feminine back, manufacturers produced and sold "backdrop" necklaces especially for that purpose. Backdrop (sometimes spelled "back-drop") necklaces, like traditional necklaces, decorate the neck-front and

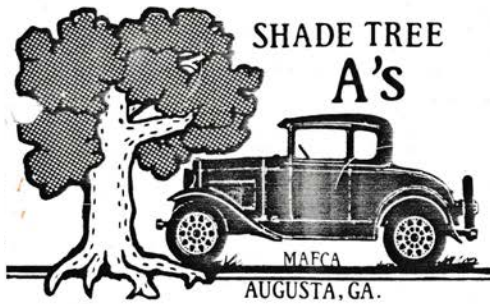


fasten in the back; however, the "backdrop feature," as seen in the figures above and the photo of Myrna Loy at the right, typically sport two or three strands that "drop" down below the coiffed hair-bun at the neck's nape and dangle between the shoulder blades. Model A Era fashions prove to be beautiful when women are both coming and going. The women of our era really knew how to make an exit!

Left: MAFCA Member Tammie Jones  
Right: Myrna Loy. Photograph taken by Max M. Autrey.



## THE SHADE TREE A'S – THIRTY YEARS AGO



The 1985-2005 *Shade Tree A's Newsletters* are now available on the Shade Tree A's website. They can be accessed via the same "button" as the other *Newsletters*, but they are password protected. The same password used to access the member roster is used to access the *Newsletters*. Thank you Dan Perla for scanning these and posting on the website.

In the November 1993 issue of the *Shade Tree A's Newsletter*, then president Craig McMullin posed the question "What keeps your Model A going? Gas, or is it some other motive force?" To help members answer that question he proposed a few answers to consider.

The Saturday breakfast and ladies driving school was also announced. An article by Patti Jones and Bill Lancaster of the Santa Clara Valley Chapter discussed development of their Ladies Driving Instruction Program.

The upcoming Christmas parade at the Georgia Regional Hospital was announced and a report on the Hephzibah County Fair parade was given. An excellent turnout was reported for the Hephzibah parade including current Shade Tree A's members Richard Dunevent and Don Turley. The Summerville Tour of Homes parade was less attended; only two cars participated in that parade, Craig McMullin's and Jim McPherson's.

The November *Newsletter* also included an extensive report on the annual fall pilgrimage to Hershey. The event was well attended by Shade Tree A's members.



Jim McPherson.  
negotiates with Art  
Tatum for an NOS  
fender at Hershey.

## TECHNICAL TOPICS

The following article by Jim Cannon is provided by MAFCA

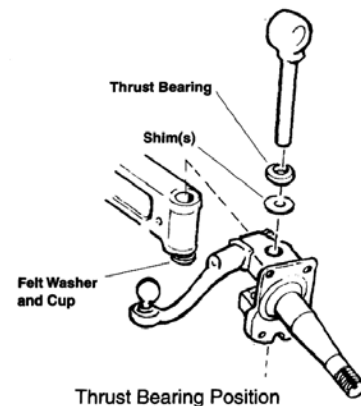
### Jim's Tech Tips "Difficult Steering"

Many Model A owners find their car hard to steer when parking or maneuvering at low speed. After you confirm that there is oil in the steering gear box (not grease), the tires are all inflated to 35 psi, and everything on the front axle has been properly greased, you are left with the most likely cause: The spindle bolt (kingpin) "thrust bearings" are defective or they are not shimmed up properly to support the weight of the car. You can confirm this by using a floor jack to take some weight off of the front wheels, and then see if the steering effort is drastically reduced. If it is, the problem is the bearings.

To correct this, you need to remove everything from the spindles to get to the kingpins and remove them. See Les Andrews' Red Book, starting on page 1-209, for directions. The illustration below comes from later in that section.

Clean the thrust bearing and replace it if it does not turn smoothly or shows any signs of wear. Pack the bearing with grease before reinstalling.

When reassembling, you need to test fit the spindle with the kingpin fully locked in place with the locking pin. Temporarily leave the large felt seal and metal washer off of the bottom of the spindle for this. Start with the number of shims previously used, then add 1 shim at a time until very little or no vertical movement of the spindle is felt on the kingpin. It can take up to 4 shims to compensate for wear.



At some point, adding a shim may jam up the spindle, making it hard to turn on the kingpin. If it does, take that last shim out, reassemble, and confirm that the spindle again moves easily, as it should. Now reassemble the spindle on the axle with the felt seal and the cupped metal washer installed between the axle and the bottom part of the spindle (the metal cup touches the axle, the felt touches the spindle). The added thickness of the felt seal may temporarily make the spindle a bit stiff turning on the kingpin, but it will quickly flatten out and move smoothly when you drive.

Now reinstall everything that attaches to the spindle, install the brakes, maybe use this as an opportunity to clean and repack the wheel bearings, then install the drums and the wheels. Grease all of the fittings well. Go for a test drive, enjoy the easier steering, and *Have a Model A Day!*

Jim

### Member Advertisements

Deadline for submittal - 20<sup>th</sup> of the month - Send submittals to [newsletter@ShadeTreeAs.org](mailto:newsletter@ShadeTreeAs.org)

### Paid Advertisements

#### SHADE TREE A'S NEWSLETTER SPONSORS

*Our thanks to the following sponsors! Their generosity supports this Newsletter and the Shade Tree A's! Please remember these folks when you need a service they offer. And please, tell them you appreciate their support of our club!*

**ANDREW MORSE**  
Buy • Sell • Trade  
Paint & Body  
Antique Classic & Street Rods  
706-834-2342  
4morses@comcast.net

**Bentley's**  
Antique Auto Service, Inc.  
We are a Full Service Shop, specializing in Model A Fords  
We offer Award-Winning Paint and Bodywork  
Expert Service and a Complete Machine Shop  
Enjoy the Drive...  
**678-407-1947**

**Bert's Model "A" Ford Center**  
2767 S. Tejon, Englewood, CO 80110  
ph# 303-293-3673 or 800-321-1931  
email address - parts@modelastore.com  
www.modelastore.com  
We buy and sell original and reproduction Model A Ford parts!

**BRATTON'S**  
ANTIQUA AUTO PARTS  
  
800-255-1929 Phone  
[www.brattons.com](http://www.brattons.com)  
800-774-1930 Fax  
1506 Back Acre Circle  
Mount Airy, MD 21771  
*Your source for Quality Model A Ford Parts since 1976*

1003 ALEXANDER DRIVE  
AUGUSTA, GA 30909  
P.O. BOX 212072  
MARTINEZ, GA 30917  
  
  
Turn To The Experts.  
**D'Antignac & Merritt Heating & Air, Inc.**  
(706) 667-0196  
Doug Wilson



**POWDERCOATING**  
 Professional Powdercoating Service  
**JAPW Racing Inc.**  
 200 Rose Street  
 Martinez, GA 30907  
 info@jrpwrcing.net

Jimmy Rivers  
 706-863-1206

Mike's "A" Ford-able Parts  
**Mike Butcher**  
 124 Model A Drive, Maysville, GA 30558  
 email: mike@mikes-afordable.com - www.mikes-afordable.com  
 Fax: 706 652 2492 - Phone: 706 652 3866  
 1 888 TRY MIKE (879 6453)

*Specialising in 1928 - 1931 Model A Ford Parts*

"ONE MILE AHEAD"  
*Smith and Jones*  
**ANTIQUÉ AUTO PARTS**  
 SPECIALIZING IN MODEL A AND MODEL T PARTS  
 60 Wisconsin St, W Columbia, SC 29170

Quality Parts • Same Day Shipping  
 • Established 1972 •

Order Desk 1-800-422-1928  
 1-803-822-4141 • Fax 1-803-822-8477  
 All Major Credit Cards Accepted

**Davin E. Smith**

Orders: www.snjparts.com  
 Email: snjparts@gmail.com

The World's Largest Selection of 1909-31 Ford Parts

**Snyder's**  
**ANTIQUÉ AUTO PARTS**

12925 Woodworth Rd. • New Springfield, OH 44443

Toll Free Ordering (888) 262-5712  
 or FAX (888) 262-5713

Order On-Line @ www.snydersantiqueauto.com

**FREE Fully Illustrated CATALOG**  
 \$10.00 outside the U.S., Canada, & Mexico

**Joseph E. Spires**  
 ATTORNEY-AT-LAW

Ward & Spires, LLC  
 445 Walker Street  
 Augusta, Georgia 30901

Phone (706) 724-2640  
 Facsimile (706) 724-2642  
 E-mail: Wardspires@aol.com

**State Farm**

**Keith Perret, Agent**

2350 Washington Road  
 Augusta, GA 30904-3162  
 Cell 225-326-4014  
 Bus 706-925-LIFE (5433) Fax 706-434-0438  
 keith@kpinthehouse.com

kpinthehouse.com

The greatest compliment you can give is a referral.

**Stuckey's** SINCE 1937

Founded in 1937 by W.S. Stuckey, Sr.  
 with a Model A Ford & a \$35 Loan

Come Visit Us! • 705 S. Main Street • Wrens, GA  
**stuckeys.com**