

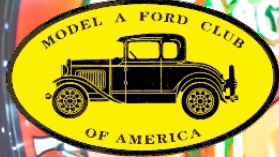
# SHADE TREE A'S

## NEWSLETTER

January 2024

Volume 51

Number 1



4424 Reynolds Street  
Hephzibah GA 30815-7909  
Website: <http://www.ShadeTreeAs.org>



<b>President</b> Craig McMullin	803-341-8955 pres@ShadeTreeAs.org
<b>Vice President</b> Andrew Morse	706-834-2342 vp@ShadeTreeAs.org
<b>Secretary</b> Frank Knapp	706-736-5238 sec@ShadeTreeAs.org
<b>Treasurer</b> Stuart Smith	706-825-9441 treas@ShadeTreeAs.org
<b>Tour Director</b> Charles Weaver	706-373-9422 tourdir@ShadeTreeAs.org
<b>National Director</b> Steve Spencer	706-294-2176 nationaldir@ShadeTreeAs.org
<b>Board of Directors</b> Darren Riley	803-230-9510 bod1@ShadeTreeAs.org
<b>Board of Directors</b> Jim McPherson	706-564-0120 bod3@ShadeTreeAs.org
<b>Advertising Coordinator</b> Matt Barrett	706-799-3699
<b>Club Chaplain</b> Ralph Neitzke	706-863-6158
<b>Era Fashions</b> Anne Neely-Beck	478-945-3736 erafashions@ShadeTreeAs.org
<b>Librarian</b> Pat Riley	803-417-6583
<b>Membership Coordinator</b> Frank Knapp	706-736-5238 membership@ShadeTreeAs.org
<b>Newsletter Editor</b> Robbie Jones	706-860-2758 newsletter@ShadeTreeAs.org
<b>Photographer</b> Sheila McPherson	706-592-4835 photographer@ShadeTreeAs.org
<b>Webmaster</b> Dan Perla	706-855-5730 webmaster@ShadeTreeAs.org



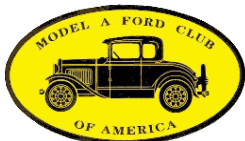
## CONTENTS

<b>Columns</b>	
Off the Running Board	3
Meeting Minutes	3
Board of Directors Meeting Minutes	3
<b>Club Calendar</b>	5
<b>Announcements</b>	
Shade Tree A's Member News	6
Refreshment Schedule	6
Birthdays	6
Other Sundry Announcements	7
<b>Recent Events</b>	
2023 Monroe Wade Award	13
Shade Tree A's Christmas Party	14
Model A's Everywhere	16
Model A Era Fashion and Style	17
The Shade Tree A's - Thirty Years Ago	21
Technical Topics	22
Advertisements	23

### On the Front Cover

Former Shade Tree A's Monroe Wade Award winner, Andrew Morse, presented the 2024 Monroe Wade Award to Matt Barrett at the annual club Christmas party. Club President, Craig McMullin, and Monroe Wade's wife, Betty, were on hand for the presentation as well. Photo by Robbie Jones.

## SHADE TREE A'S MODEL A CLUB



The Shade Tree A's Model A Club is a non-profit organization dedicated to the preservation and the restoration of the Model A Ford automobile. Shade Tree A's annual dues are only \$25. Members are urged to join the Model A Ford Club of America ([www.mafca.com](http://www.mafca.com)) and the Model A Restorer's Club ([www.model-a-ford.org](http://www.model-a-ford.org)) to enjoy the benefits of these national organizations including their respective magazines: *The Restorer* (MAFCA) and *Model A News* (MARC). The Shade Tree A's club is also a member of MAFFI, the Model "A" Ford Foundation, Inc.



#### CONTACT INFORMATION

4424 Reynolds Street  
 Hephzibah GA 30815-7909  
 Website: <http://www.ShadeTreeAs.org>

#### ABOUT THIS NEWSLETTER

© 2024 Shade Tree A's, except as noted.  
 Please contact Robbie Jones at [Newsletter@ShadeTreeAs.org](mailto:Newsletter@ShadeTreeAs.org) concerning reprinting of articles, illustrations, or photos.

## OFF THE RUNNING BOARD

*Craig McMullin - President*

I hope everyone had a Merry Christmas and is looking forward to the new year. I also hope the Shade Tree A Christmas Party put a little holiday spirit in your busy schedule. I especially enjoyed the Greenbrier H.S. saxophone quartet playing their Christmas rendition of all our holiday favorites. Congratulations to Matt Barrett who received this year's Monroe Wade Award. Well deserved, Matt, way to go!

The STA Board will be discussing next year's calendar of events before our January meeting. Your thoughts and ideas are always welcomed and don't be bashful about volunteering to lead a tour that you would like to share with the club. We are always looking for new places to see and experience.

We haven't done this in a while but your thoughts on a short overnight tour to some nearby venue some weekend I think would be fun and exciting. I plan to mention this to the Board for feedback and if positive to the rest of the club in January.

Ahooga,

*Craig McMullin* - President

### MONTHLY MEETING TIME & LOCATION

Meetings are held on the second Monday of each month at Richard Dunevent's garage, 4338 Owens Road, Evans, Georgia. Meetings begin at 7:00 PM and are followed by refreshments.

## MEETING MINUTES

There was no December meeting of the Shade Tree A's due to the Christmas Party; therefore, there are no meeting minutes.

## BOARD OF DIRECTORS

### MEETING MINUTES

*December 27, 2022*

*Richard's Garage*

*Respectfully submitted: Frank Knapp - Secretary*

The Shade Tree A's Board of Directors met December 27, 2023 at our club meeting room at Richard Dunevent's garage. Board members present included President Craig McMullin, Vice President Andrew Morse, Treasurer Stuart Smith, Secretary Frank Knapp, National Director Steve Spencer, Jim McPherson and Darren Riley. Other STA members Robbie Jones, Dan Perla, Richard Dunevent, and Darrell Henderson were also in attendance.

President Craig brought the meeting to order promptly at 6:30 P.M. with several topics on the agenda. Discussions included a general review of meeting refreshments, availability of personalized name tags for new members and comments about our recent Christmas Party.

The current status of our treasury and expense projections for 2024 was discussed at length. All agreed a detailed budget for the year is needed and will be prepared in the near future. Also, possibly increasing the number of newsletter advertisers was mentioned as well as the future of our Certificates of Deposit.

# BOARD OF DIRECTORS MEETING MINUTES

*Continued*

Month by month dates for activities such as technical seminars, official club tours and the MARC National Meet in July were discussed. The Board is also considering bringing back our Valentine's Day Brunch and The STA Steak Cook-out!

All items mentioned above will be presented to the entire membership at our January meeting for approval and any other ideas and/or suggestions will be welcomed from our members.

There being no further business, the meeting was adjourned at 8:20 P.M.

Your Board of Directors has planned a fun-filled variety of tours and activities for 2024 and we urge all of our members to participate.

**OVERDUE**

**Shade Tree A's Member Dues  
Late Notice**

**OVERDUE**

**DON'T LET YOUR MEMBERSHIP BE REPOSSESSED!**

Shade Tree A's member dues for 2024 were due by the end of the year. Please see the club Secretary, Stuart Smith to make your payment. Checks or exact cash with your name attached are appreciated. Dues for 2024 are \$25.



## CLUB CALENDAR

### *Shade Tree A's Events*

#### January

- 1 Shade Tree A's New Year's Day Breakfast, 8:00 AM, Cracker Barrel at I-20 and Belair Road
- 8 Shade Tree A's Meeting, 7:00 PM, Richard's garage (Technical Program: *Upholstery in a Post LeBaron Bonney World* – Robbie Jones)
- 26 Stuckey's Pecan Factory Tour and Lunch, watch your email for more details

#### February

- 10 Shade Tree A's Sweetheart Brunch, Craig & Theresa McMullin's house, details to come
- 12 Shade Tree A's Meeting, 7:00 PM, Richard's garage (Technical Program: *The Model A Transmission - How It Works* – Dan Perla)

#### March

- 11 Shade Tree A's Meeting, 7:00 PM, Richard's garage (Technical Program: *The Model A Transmission – Parts Inspection* – Dan Perla)
- 17 Saint Patrick's Day Parade, downtown Augusta, more details to come

#### Every Wednesday at 11:30

Join the Shade Tree A's for lunch at Cicis Pizza on Wheeler Road

***TBA - To Be Announced***

### *Other Events of Interest*

#### January

- 13 Falls City Region Model A Ford Club Swap Meet, Shepherdsville, KY, contact Roy Armstrong at 502-543-4189; [royra@windstream.net](mailto:royra@windstream.net)

#### March

- 15-16 Model A Swap Meet, Southeast Railway Museum, Duluth, GA, contact Hal Dye at 707-841-8353; [haldye1957@gmail.com](mailto:haldye1957@gmail.com)

#### April

- 4-6 AACA Spring National Meet AACA, Grand National Meet, Charlotte, NC
- 19-20 Old 96 District Model A Ford Club Swap Meet, Greenwood, SC, contact Warren Reynolds at 864-980-7937, [swreynolds1946@gmail.com](mailto:swreynolds1946@gmail.com)

#### May

- 4 Johnston Peach Parade, breakfast hosted by NAPA Auto Parts
- 10-11 Model A & T Swap Meet hosted by the Shenandoah Valley Racket "T"ers, Luray, VA, contact Dennis Fleming at 540-860-1384, [dennis@fairviewnet.com](mailto:dennis@fairviewnet.com)

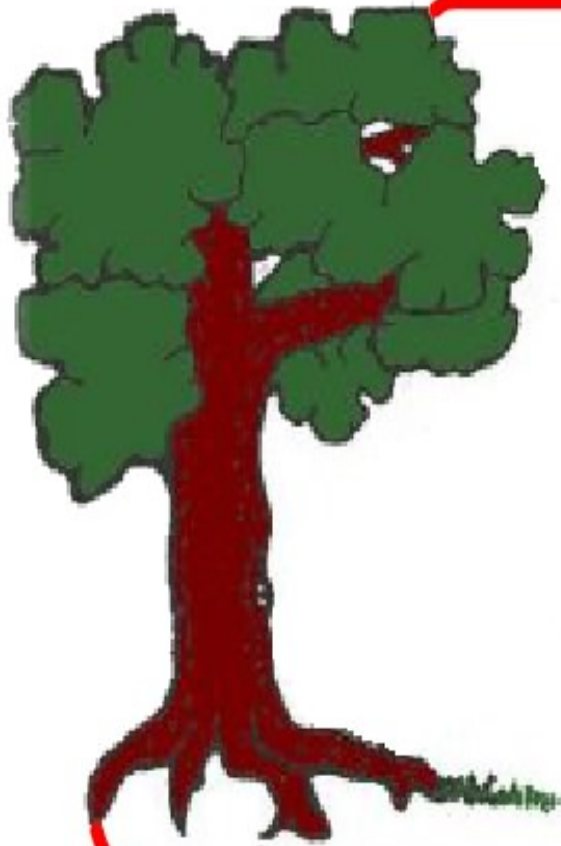
#### June

- 14-15 Palmetto A's Swap Meet, Columbia, SC, contact John Cockerill at 803-446-3837, [johntwilac@yahoo.com](mailto:johntwilac@yahoo.com)

#### July

- 15-18 MARC National Meet, Asheville, NC, additional details provided elsewhere in the *Newsletter*

# ANNOUNCEMENTS



## Shade Tree A's Member News

- Please continue to keep the following Shade Tree A's members in your thoughts and prayers:
  - Janet Neumar being treated for lung cancer
  - Misty Hooker diagnosed with cancer, starting treatment soon

Send items for Shade Tree A's Member News to:  
newsletter@ShadeTreeAs.org



## Refreshment Schedule

January

**Jim McPherson, Dan Perla**

February

**Ralph Neitzke, Craig McMullin**

March

**Kathy & Tom Poole, Robbie Jones**

**The first person listed is the primary coordinator for the month**



## January Birthdays

- 6 Steve Teal
- 13 Dean Summers
- 14 Don Bray
- 26 Steven Spencer
- 29 Heidi Caruthers
- 31 Janet Neumar

**ANNOUNCEMENTS**

*New Year's Day Breakfast*

Join the Shade Tree A's for our annual New Year's Day breakfast at the Cracker Barrel near the I-20 and Belair Road interchange (460 Park Way Drive, Grovetown, GA). We have a room reserved just for us. Be there by 8:00 AM for good food and fellowship.



**OVERDUE**

**Shade Tree A's Member Dues  
Late Notice**

**OVERDUE**

Shade Tree A's member dues for 2024 were due by the end of the year. Please see the club Secretary, Stuart Smith to make your payment. Checks or exact cash with your name attached are appreciated. Dues for 2024 are \$25.

**ANNOUNCEMENTS**

*18th Annual*

**All Model A Parts Swap Meet  
Old 96 District Model A Club**

**314 Old Mount Moriah Road • Greenwood, SC 29646  
(On Rt. 221 Between 25 and Rt. 225)**

**April 19-20, 2024**

**Friday 8:00 AM - 5:00 PM**

**Saturday 8:00 AM - UNTIL**



**MODEL A DISPLAY AREA**

- Admission            \$2.00 per adult**
- Car Corral            \$10 for both days**
- Vendor Space        \$25.00 perregistration**  
**\$30.00 at the gate**

***Lunch will be available***

**Door Prizes & 50 / 50 drawing daily**

*Email:swreynolds1946@gmail.com*

*Info: Warren Reynolds (864) 980-7937 or Jim Cothran (864) 981-2296*





## ANNOUNCEMENTS



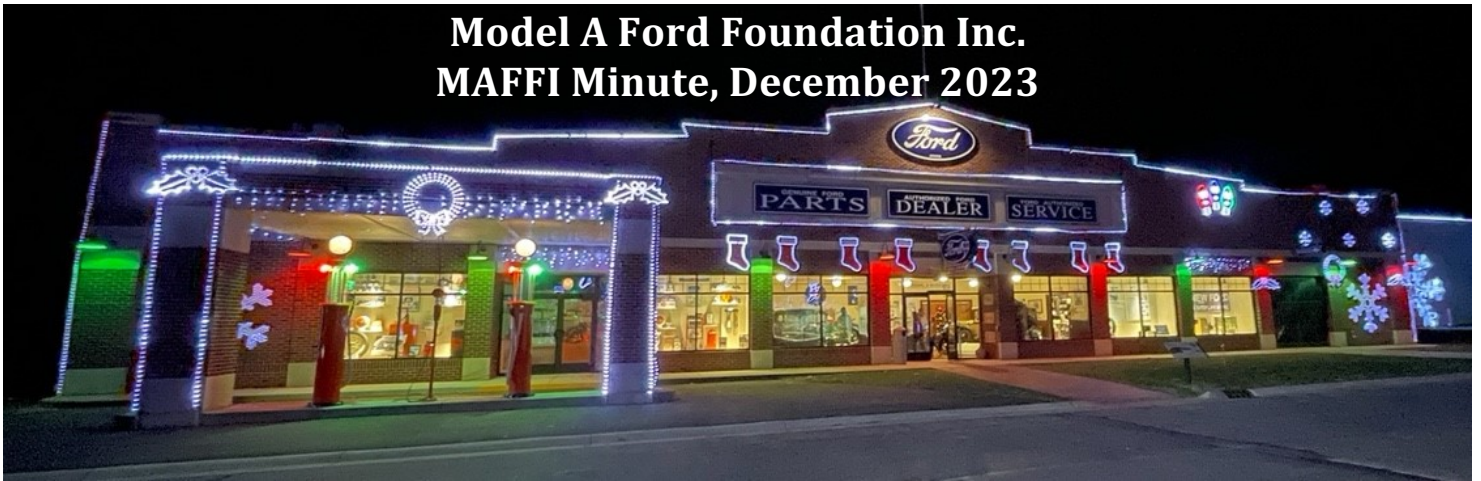
As the year comes to a close and the joyous holiday season begins, we, your MAFCA Board of Directors along with Sandra, Brenda and Juanita at the office in La Habra, want to take a moment to express our heartfelt wishes to you and your loved ones.

May the magic and wonder of this holiday seasons fill your heart and home with happiness, love, and laughter. May the spirit of the season bring you closer to those whom you cherish so much.

Warmest thoughts and best wishes for a wonderful holiday and a very Happy New Year.

## ANNOUNCEMENTS

### Model A Ford Foundation Inc. MAFFI Minute, December 2023



Welcome 2024! Exciting changes are happening at the Model A Museum at Gilmore. And we are still gladly accepting contributions to the expansion as we grow our Model A Museum: Hint hint! ([www.maffi.org](http://www.maffi.org) and then click on Expansion to donate). Part of the Gilmore Auto Museum's mission and the Model A Museum's mission is to expand educational opportunities, so both organizations have their sights set on making the educational piece a part of all new additions.



As well as our upcoming Model A Museum addition, the Gilmore Auto Museum is expanding in several areas too, so our timing at the Model A Museum is perfect to join in the growth on the campus. The Gilmore is adding a pavilion with an entertainment stage, a three season building for events, and insulating and repurposing the Carriage House so it can be used for events. With three new event venues, the Gilmore museum realized it also needed to construct a picnic shelter, add restrooms, and upgrade/expand the outdoor food service. All of these changes are driven by the increase in the number of visitors to the museum; after all, America has long been known as having a love affair with its automobiles! The Gilmore Auto Museum, of which the Model A Museum is a part of, has become a vacation destination for automobile aficionados.



While you're in the New Year's resolution mood, make plans to visit Hickory Corners, Michigan this next year to see all the exciting things happening. The museum changes all the time, so there's always several new learning opportunities, great new exhibits, and fabulous cars to see.

Happy New Year,  
Cindy Ellenbecker, Secretary  
Trustee, Model A Ford Foundation Inc.

# ANNOUNCEMENTS

## ASHEVILLE, N.C. MARC NATIONAL MEET JULY 15TH-18TH. 2024

### BOOKING IS NOW OPEN AT THE **HOST HOTEL!**



**CROWNE PLAZA RESORT ASHEVILLE**

**1 RESORT DRIVE, ASHEVILLE, NORTH CAROLINA 28806**

**ROOMS ARE \$169.00\* PP/ TEL:1-844-330-0296**

**GROUP CODE: NASHVILLE A'S 2024 OR ON LINE AT:**

**WWW.ASHEVILLECP.COM 2.CHECK AVAILABILITY (ENTER DATES OF STAY)**

**3. ENTER GROUP CODE: MDA**

545



## “DON'T BE BASHFUL... MEET US IN ASHEVILLE”

**FOR MORE INFORMATION PLEASE CONTACT YOUR MEET CHAIRMAN**

**PAUL GANNINGER 314-852-5591 OR EMAIL MARCMEET2024@GMAIL.COM**

\*PLUS TAXES, ALL ROOMS AT HOST HOTEL WILL REQUIRE A 1 NIGHT DEPOSIT PER ROOM & NAMES FOR EACH ROOM BOOKED. MAXIMUM OF 2 ROOMS.

**HOSTED BY THE NASHVILLE A'S REGION**



ANNOUNCEMENTS

ASHEVILLE 2024 MARC NATIONAL MEET

JULY 15TH-18TH 2024

BOOKING IS NOW OPEN

AT THESE ADDITIONAL HOTELS!

HOSTED BY THE NASHVILLE A'S REGION



COUNTRY INN & SUITES ASHEVILLE RIVER ARTS DISTRICT  
22 WESTGATE PARKWAY, ASHEVILLE, NC  
TEL:1-828-772-3188  
\$109.00 PER NIGHT\* INCLUDING BREAKFAST  
CODE:NASHVILLE A's  
.03 MILES FROM HOST



HOLIDAY INN ASHEVILLE-BILTMORE WEST  
435 SMOKEY PARK HIGHWAY, ASHEVILLE, NC 28806  
TEL:(828)665-2161  
\$105.00 PER NIGHT\*  
CODE:THE NASHVILLE A's  
6.1 MILES TO HOST



10 min  
5.8 miles

HOLIDAY INN & EXPRESS, ASHEVILLE SW - OUTLET CTR  
12 ROCKY RIDGE ROAD, ASHEVILLE, NC 28806  
TEL:1-888-465-4329  
\$108.00 PER NIGHT\* INCLUDING BREAKFAST  
CODE: THE NASHVILLE A's  
5 MILES TO HOST

540



10 min  
6.1 miles

COMFORT SUITES OUTLET CENTER  
890 BREVARD RD., ASHEVILLE, NC, 28806  
TEL: (828) 665-4000  
\$85.00 PER NIGHT\* INCLUDING BREAKFAST  
CODE: THE NASHVILLE A's OA55F3  
6.5 MILES TO HOST

425



CAMPING: THE PARKWAY HAS FOUR CAMPING AREAS IN THE ASHEVILLE AREA, OPEN APRIL OR MAY THROUGH OCTOBER. CAMPING IS \$20/NIGHT FOR ALL CAMPGROUNDS, FIRST-COME FIRST-SERVE. ADVANCE RESERVATIONS ACCEPTED AT ALL CAMPGROUNDS EXCEPT CRABTREE FALLS. CAMPING ALONG THE PARKWAY IS PERMITTED ONLY IN DESIGNATED CAMPGROUNDS. CALL 828-765-6082 FOR MORE INFORMATION

"DON'T BE BASHFUL, MEET US IN ASHEVILLE"

FOR MORE INFORMATION PLEASE CONTACT YOUR MEET CHAIRMAN

PAUL GANNINGER 314-852-5591 OR EMAIL MARCMEET2024@GMAIL.COM

\*PLUS TAXES, ALL ROOMS AT HOST HOTEL WILL REQUIRE A 1 NIGHT DEPOSIT PER ROOM & NAMES FOR EACH ROOM BOOKED. MAXIMUM OF 2 ROOMS.

## RECENT EVENTS

### 2023 Monroe Wade Award

*Story and photos by Robbie Jones*

The 2023 Shade Tree A's Monroe Wade Award was presented by Andrew Morse at the Christmas Party on December 16, 2023. Andrew read the text of the nomination prior to presenting the award to Matt Barrett. Congratulations Matt! Betty Wade, Monroe's wife, and Deborah Fuller, Monroe's daughter, were on hand to observe the presentation of the award. Betty and Deborah expressed their gratitude to the club for continuing to remember Monroe through the Monroe Wade Award.

The recipient of the 2023 Monroe Wade Award is no stranger to the Model A hobby. He owned Model A's many years ago, even prior to the formation of the Shade Tree A's. However, his business career kept him busy and his hobby had to take a back seat. When he retired and sold his business, his interest in Model A's was rekindled. He quickly purchased two or three Model A's, joined the Shade Tree A's and volunteered to help lead the club. He has served six consecutive years on the board of directors, four of those years as President. He has participated in many parades with his Model A and encouraged others to participate. He has also escorted several couples to their wedding receptions in his Model A. His visual presence with his Model A has helped to promote the Shade Tree A's and our hobby. Thank you, Matt Barrett, our 2023 recipient of the Monroe Wade Award.



### Monroe Wade and the Shade Tree A's

New members might wonder who Monroe Wade was. Monroe was a man who loved Model A's and who loved the Shade Tree A's club! A man you could **ALWAYS** depend on to help a fellow member regardless of the time or weather. Monroe worked hard for the club and you could usually find him leading a tour or carrying in refreshments or door prizes that he had talked some local business into donating.

After restoring a 1930 Tudor that had belonged to his Mother, Monroe went on to restore a number of other A's. All of them were award-winning cars!

After his death in 2003, his wife Betty and his daughters, Deborah and Joyce, have continued to be active in the club and to drive Monroe's beloved cars.

Monroe was a great friend and we miss his enthusiasm and his ability to make a Model A purr like a contented kitten.

The annual award is our way of remembering Monroe and we are delighted to have Betty and the Wade family to be active in the club.



## RECENT EVENTS

### Shade Tree A's Christmas Party

*Story and photos by Robbie Jones*

Once again Jack Sheppard graciously allowed the Shade Tree A's to hold their Christmas party at his Country Store on December 16, 2023. Club President, Craig McMullin, welcomed everyone to the party and Ralph Neitzke offered the blessing for our meal. Everyone enjoyed the turkey and dressing, ham and all the trimmings supplied by Wife Saver Restaurant. During the party, Club President, Craig McMullin, presented Shade Tree A's Service Awards to Deborah Fuller (5 years), Dan Perla (30 years) and Bob and Sandra Reis (2 years). Others earning awards this year but not present include John Neumar (10 years), Walter Smith (30 years) and Charles Weaver (5 years). Craig McMullin also introduced the club officers for 2024 and discussed upcoming events for 2024 including the Sweetheart Brunch to be held at Craig and Theresa McMullin's house. The Monroe Wade Award for 2023 was awarded to Matt Barrett; it was an extra special presentation with Monroe's wife Betty and daughter Deborah in attendance. In lieu of door prizes this year, every lady was given a poinsettia. Matt Barrett once again arranged for the Greenbrier High School saxophone quartet led by Rutledge Boykin to provide entertainment while we dined and socialized.



RECENT EVENTS

Shade Tree A's Christmas Party

*Continued*



## RECENT EVENTS

### Model A's Everywhere

*Story and photos by Robbie Jones*

It seems Model A's or some part of a Model A can be found everywhere, if you just look around. Such was the case on two recent trips/outings that Leta and I made. On a trip to the mountains near Franklin, NC, we visited the Tessentee Bottomland Preserve. The Preserve is located on a historic trading route along the Little Tennessee River valley. Next to the old homestead was an old farm implement that caught my eye. Upon closer inspection, it was definitely a homemade contraption made from old steel barrels and Model A rims! You had to use what you had back then I guess! Matt, I know you've been looking for extra rims and you go to Franklin a lot, but don't get any ideas about swiping these rims. I don't think Stuart has enough money in the treasury to bail you out.

On a later, more local outing to Harlem, Georgia, we visited the Oliver Hardy Museum where we spotted a small display of Oliver and Stan Laurel riding in a Model A. Keep your eyes peeled and report any unusual Model A sightings you run across.





## MODEL A ERA FASHION AND STYLE

*The following article originally appeared on the MAFCA website in November 2013*



### It's About Time!

By Peggy Gill



Throughout history, man has been fascinated with the concept of time. We find ourselves scurrying to be on time for an appointment or event, and then trying to save time by multitasking. Our lives, it seems, revolve around that small flat dial embellished with numbers and the rotating hands that mark the passage of time on a daily basis.

#### A Brief History

The first mechanical watches appeared in the early 1500's. Peter Henlein of Nurnberg, Germany is attributed with developing the first "pocket watch" sometime around 1505, but this has been disputed by many historians. Nevertheless, the watches consisted of a single hour hand and were meant to be carried in the hand or worn on a chain around the neck. It wasn't until 1675 when Charles II of England introduced the waistcoat, and pocket watches became thinner and flatter in order to fit into the small waistcoat pocket. This also kept the watch "out of sight" to would-be robbers on the highway. Over the many years of development, the mechanics of the watches evolved to become not only more durable and accurate, but works of art with their intricate movements, jewels, and engraved faces and cases.

At least two watchmakers have purportedly claimed to develop the first wrist watch. The earliest is Abraham-Louis Breguet, a Swiss watchmaker, who according to the archives at Breguet (the current company in Switzerland), presented a watch to fit on a wrist as a gift to Caroline Murati, the Queen of Naples in 1812. Later, in 1868, Patek Philippe developed the "ladies bracelet watch." Philippe is more often credited with inventing the wrist watch. Nevertheless, other watchmakers throughout Europe soon began making wrist watches, which were often a modified, small cased pocket watch attached to a strap; the first true mass production of these time pieces were ordered by Kaiser Wilhelm I of Germany to be made for German naval officers. Soldiers and aviators in the early 20<sup>th</sup> century found that having a timepiece on their wrist freed their hands for more necessary and important endeavors. Consequently, up until World War I, wrist watches were worn mostly by women. One such watch referred to as the "wristlet" was made for women and became even more popular in the 1920's. The general opinion held by many prominent gentlemen was that these wristlets were simply a passing fad instead of a serious timepiece. Although pocket watches were still being used after the war, people began accepting the wrist watch as being more practical and by 1930, the ratio of wrist watches to pocket watches was 50 to 1. \*As a side note, I found it interesting that in looking through my 1929 *Sears, Roebuck and Co.* catalog, there were eight pages of wrist watches, and four pages of pocket watches; my 1931 *Montgomery Wards* catalog contains six pages of wrist watches and three pages of pocket watches.

#### Finding a Watch from the Model A Era

During the Model A era, both pocket watches and wrist watches were being worn. New watches purchased during our era were still mechanical but were styled differently from earlier watches. But that didn't mean you dumped "Grandpa's" watch and bought a new one. However, if your intent is to enter fashion judging and use a watch as one of your accessories, you need to look for a watch that was available for purchase during the Model A years. Watches are readily available at many antique stores

## MODEL A ERA FASHION AND STYLE

or on eBay, and if you know what to look for, you can often find a deal. Please remember that to earn full points in judging, your watch needs to be in good working condition.

The best way to know that your watch is from the Model A era is to determine the date of your watch. American watches, such as Elgin and Waltham, can generally be dated by their serial number which was stamped on the movement itself. If your watch happens to be an Elgin, the company maintains a data base online ([elginwatches.org](http://elginwatches.org)) that you can type in the serial number and get detailed information about the movement itself. Another resource is an article written by Kevin James entitled "How to Determine the Age of a Watch" which is available at [www.thewatchguy.com/pages/DATING.html](http://www.thewatchguy.com/pages/DATING.html). You do need to be familiar enough with how pocket watches work, as far as opening the cases without damaging the case or the movement to locate the serial number. The same article mentioned above has further information on how to open your watch case. Please note that many antique dealers do not know how to do this and are often unwilling to try to do so without the booth owner's presence; if you are a pocket watch aficionado, they will usually allow you to do so if you ask permission.

The number of "jewels" in the watch movement is evidence of the quality of the watch. The jewels are used as bearings for the moving parts of the watch. Lower grade watches typically contained 7, 15, or 17 jewels. Higher end watches contained 19, 21, and even 23 jewels.

Finding an era watch becomes much easier if you can recognize some basic key features in a Model A era watch. Below are some examples of watches, with tips on what to look for. Keep in mind though that like all fashion trends, these tips are not an absolute but things that can generally be found.



### Pocket Watches

Pictured at left is a typical pocket watch from the Model A era. It shows both a watch movement dated to 1929 and a case typically found in our era. Pocket watches come in different sizes, and the more typical size for our era was a 12 or 16, although it was still possible to purchase 18's. (The smaller the number, the smaller the movement; for example, a size 12 is approximately 1 3/4 inches in diameter, a 16 is about 2 inches in diameter, and an 18 is about 2 1/4 inches in diameter.) Generally, the numerals on the face were Arabic, and with the exception of Railroad Watches, the numbers were usually smaller in size. The length of the stem on the case is shorter, and the bow is flattened or geometric—not completely round.

The watch itself is usually thinner and smaller than earlier watches. The cases themselves are usually engraved and are often monogrammed on the back.

The Elgin watch at the right is a 14 kt. gold ornate case and movement from 1928



## MODEL A ERA FASHION AND STYLE



At left is a Hamilton dated 1930 in a railroad case. Railroad watches typically had larger Arabic numerals.

Below and to the right is a 1931 Elgin in a white gold case. Notice the engraving and monogram on the back of the case.



Pictured left is an example of what often occurred. The movement inside the case is dated 1929. The case, however, is from an earlier watch. Notice the taller stem, and the completely round bow. This case also is thicker.

Pocket watches and their cases were interchangeable. If a watch movement died, you could purchase just the movement and continue to use the old case. Conversely, if the case was badly dented or scratched but had a working movement, just a case could be purchased.



### Wrist Watches

As stated earlier, wrist watches were becoming more and more popular due to their practicality. Below are some examples of both men's and women's watches from the Model A era. Most watches could be interchanged with different watch bands, given the owner's preference and occasion. Men's and women's watch bands could be found made of woven mesh, available in nickel or in 1/10 14 kt. white

## MODEL A ERA FASHION AND STYLE

and “natural” gold filled. For men, also popular were leather straps, adjustable metal expansion bands, or flexible metal wristbands. Women’s watches also came with black silk ribbon bands with gold-filled or solid gold clasps (depending upon the quality of the watch), flexible expansion metal bracelets, gold-filled or 14-karat solid gold. Many high end women’s watches were sold with a gold or gold filled bracelet and included the black silk ribbon band as well.

### Men’s



### Women's



Enjoy the hunt!

### Sources:

Montgomery Ward & Co., Fall and Winter 1930-1931, Catalogue No. 113.

Sears, Roebuck and Co., Fall and Winter 1929-1930, Catalog No. 159.

<http://www.britannica.com/EBchecked/topic/636716/watch>

<http://www.breguet.com/en/history>

<http://www.fhs.ch/en/history.php>

<http://ablogtowatch.com/a-brief-history-of-watches>

[http://clockonly.com/watch\\_history.html](http://clockonly.com/watch_history.html)

<http://elginwatches.org>

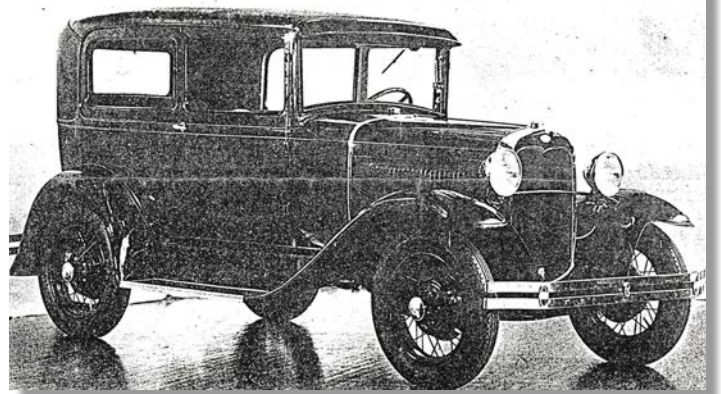
## THE SHADE TREE A'S – THIRTY YEARS AGO



The 1985-2005 *Shade Tree A's Newsletters* are now available on the Shade Tree A's website. They can be accessed via the same "button" as the other *Newsletters*, but they are password protected. The same password used to access the member roster is used to access the *Newsletters*. Thank you Dan Perla for scanning these and posting on the website.

The big news in the January 1994 issue of the *Shade Tree A's Newsletter* was the announcement of the winner of a 1930 Tudor Sedan donated by Jim McPherson. It was reported that Jim was taken to tears by the outpouring from club members.<sup>1</sup> The upcoming technical program for January was also announced, buffing stainless steel. A report was also made on the well-attended Christmas parade at the Georgia Regional Hospital in which ten Model A's and their owners from the Shade Tree A's participated. The report on the Hephzibah Christmas Parade included several photos of the Shade Tree A's in action. The Thomson Christmas parade was attended by fifteen Shade Tree A's cars and their owners!

### CHRISTMAS PARTY GRAND PRIZE !



In the *Authentically Speaking* column, it was reported that the club was in awe at the November meeting when Jim McPherson presented the technical program on the Model A exhaust system. Subsequent to the meeting, an article was published in the *Model A Trader* about problems associated with reproduction mufflers. The article is reprinted in the *Newsletter* and includes a discussion of the Aries muffler.



1. It was a joke. Read all about it in the January 1994 issue of the *Newsletter* on the club website.

## TECHNICAL TOPICS

Now that it's winter and the tours have slowed down a bit, now is a good time to perform routine maintenance on your A. Also, get prepared for upcoming tours by assembling a tool and spare parts kit. The following list from the Model A Ford Club of America can be used to guide your selection of tools and parts.

Tools		Parts (pre-tested if possible)	
Jack and handle	Flashlight	Spark plug connectors	Tie rod and drag link spring
Starting crank	Tube patch kit	High tension coil lead	Timing gear
Tire pump	Electrical circuit tester	Fan belt	Coil
Ball peen hammer	Distributor shaft wrench	Radiator hose set	Stop light switch
Socket Wrench set 5/16-7/8	Tire irons (2)	Light bulb set	Starter switch
Adjustable wrench, small	Knife, Scout type	Water pump packing	Starter drive
Box wrench 5/8 x 3/4 (generator)	Scissors (for gasket work)	Ignition Switch	Brake spring assortment
Box wrench 1/2 x 9/16 (battery)	Emergency flares or flashers	Ignition points	Fuel lines and fittings
Screwdrivers	Spark plug wrench that fits YOUR plugs	Condenser	
Pliers	Model A adjustable wrench	Spark plug	
Wire cutter/crimper/stripper	Drift, 5/8" diameter, brass	Ammeter	
Ignition tools (feeler gauge, file)	Drift, steel	Ignition cable	
Grease gun	Socket, main bolts	Generator cutout	
Supplies			
Copper wire, #12 insulated, 10'	Gasket sealing compound	Carburetor gaskets	Service manual
Bailing wire, iron, 10'	Gasket material, 12" square	Sanding paper, fine grade	MAFCA roster
Heavy string	Fuel valve packing	Soap and talcum (for tires)	Gallon of Water
Electrical tape	Small springs assortment	Length of wood (2x4 x6")	Fuses
Assorted bolts, nuts, cotter pins, etc.	Rags	Wheel bearing grease	

Additional Tools and Parts to Consider for Long Trips			
Tools		Parts (pre-tested if possible)	
Timing Gear Wrench (5-Z-1832)		Water Pump, pre greased	Distributor lower shaft
Valve Guide Remover		Water pump gasket	Distributor cap, lid, rotor
Valve Spring Compressor		Fan (inspect for cracks!)	Valves, springs, guides (2 of each)
Rear hub puller, screw type		Carburetor	Head gasket
		Distributor	Manifold gaskets

### Member Advertisements

Deadline for submittal – 20<sup>th</sup> of the month – Send submittals to [newsletter@ShadeTreeAs.org](mailto:newsletter@ShadeTreeAs.org)

FOR SALE: AERIES MUFFLER: Model 'A' Muffler built to the original Ford specifications. Not only does it fit your car exactly as an original muffler, but it performs as well as or better than a NOS Ford Muffler. The dyno test confirmed that this standard and Original Ford design muffler will work perfectly on engines up to 85 horsepower. The current catalog price for one of these mufflers is \$239 plus shipping. I have one extra, new, on hand that I do not need and will sell it for \$200.

Original Model 'A' flywheel housing, no cracks, bead-blasted, painted and ready to install. \$135.

Pick it up at my home in Evans, GA. Bring cash. Don Turley 706-589-0738

### Paid Advertisements

#### SHADE TREE A'S NEWSLETTER SPONSORS

*Our thanks to the following sponsors! Their generosity supports this Newsletter and the Shade Tree A's! Please remember these folks when you need a service they offer. And please, tell them you appreciate their support of our club!*

Matt Barrett  
706-799-3699



*Vintage 1930 Model A Ford  
Available For Special Occasions*

**BARRETT SUPPLY CO. INC.**  
Distributor of Wholesale Plumbing  
Irrigation, Pump Supplies, Industrial Plastics  
Since 1922

**GEORGE FISHER**

P.O. Box 1423  
Augusta, GA 30903  
2501 Mike Padgett Hwy.  
Augusta, GA 30906  
georgef@barrett.supply


Bus: (706) 771-9800  
Toll Free: 1-800-364-2124  
Cell: (706) 513-9655

**Bentley's**  
Antique Auto Service, Inc.

We are a Full Service Shop, specializing in Model A Fords  
We offer Award-Winning Paint and Bodywork  
Expert Service and a Complete Machine Shop

Enjoy the Drive...

**678-407-1947**



**Bert's Model "A"  
Ford Center**

2767 S. Tejon, Englewood, CO 80110  
ph# 303-293-3673 or 800-321-1931  
email address - parts@modelastore.com  
www.modelastore.com

**We buy and sell original and reproduction Model A Ford parts!**

**Big Dog Stump & Tree**



No BONES about it,  
We are the BEST!  
3 I.S.A. Certified  
Arborist on staff  
(706) 447-8787

[bigdogdisposal@bellsouth.net](mailto:bigdogdisposal@bellsouth.net)  
P.O. Box 211063 • Martinez, GA 30917

**BRATTON'S**  
**ANTIQUE AUTO PARTS**



800-255-1929 Phone  
[www.brattons.com](http://www.brattons.com)  
 800-774-1930 Fax  
 1606 Back Acre Circle  
 Mount Airy, MD 21771

*Your source for Quality Model A Ford Parts since 1976*



**BENJAMIN HUTTO**  
 Operator/Owner

bhutto@cicis.com  
 4025 Wheeler Rd | Augusta, GA 30907  
 o 706.364.6659  
 c 803.665.6909

1003 ALEXANDER DRIVE  
 AUGUSTA, GA 30909

P.O. BOX 212072  
 MARTINEZ, GA 30917




**D'Antignac & Merritt Heating & Air, Inc.**  
 Turn To The Experts.

(706) 667-0196

Doug Wilson



Since 1980  
 Augusta, Georgia

**SALES & SUPPLIES**  
[www.furnituredoctor.net](http://www.furnituredoctor.net)

Walter Smith

Office: 706-798-5951  
 Fax: 706-798-7658

3323 Peach Orchard Road  
 Augusta, GA 30906  
[supplies@furnituredoctor.net](mailto:supplies@furnituredoctor.net)

*Providing Services for Estate Liquidations*

*Complete Line of Refinishing Supplies for Professional and Do-It-Yourselfers*

BUY • SELL • TRADE




**CLICKAROO.COM**



**Eric Shogren**  
 (803) 215-3276  
[ericshogren@gforcecable.com](mailto:ericshogren@gforcecable.com)

**POWDERCOATING**  
 Professional Powdercoating Service

**JRPW Racing Inc.**

200 Rose Street  
 Martinez, GA 30907  
[info@jrpwracing.net](mailto:info@jrpwracing.net)

Jimmy Rivers  
 706-863-1206

Mike's "A" Ford-able Parts



**Mike Butcher**

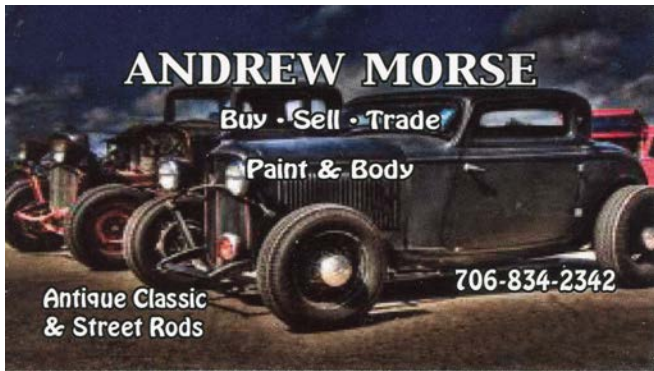
124 Model A Drive, Maysville, GA 30558  
 email: [mike@mikes-afordable.com](mailto:mike@mikes-afordable.com) - [www.mikes-afordable.com](http://www.mikes-afordable.com)  
 Fax: 706 652 2492 - Phone: 706 652 3866  
 1 888 TRY MIKE (879 6453)



*Specialising in 1928 - 1931 Model A Ford Parts*



**ANDREW MORSE**  
 Buy • Sell • Trade  
 Paint & Body  
 706-834-2342  
 Antique Classic & Street Rods



"ONE MILE AHEAD"  
*Smith and Jones*  
**ANTIQUÉ AUTO PARTS**  
 SPECIALIZING IN MODEL A AND MODEL T PARTS  
 60 Wisconsin St, W Columbia, SC 29170  
 Quality Parts • Same Day Shipping  
 • Established 1972 •  
 Order Desk 1-800-422-1928  
 1-803-822-4141 • Fax 1-803-822-8477  
 All Major Credit Cards Accepted



**Davin E. Smith**  
 Orders: [www.snjparts.com](http://www.snjparts.com)  
 Email: [snjparts@gmail.com](mailto:snjparts@gmail.com)

The World's Largest Selection of 1909-31 Ford Parts

**Snyder's**  
**ANTIQUÉ AUTO PARTS**  
 12925 Woodworth Rd. • New Springfield, OH 44443  
 Toll Free Ordering (888) 262-5712  
 or FAX (888) 262-5713  
 Order On-Line @ [www.snydersantiqueauto.com](http://www.snydersantiqueauto.com)



**FREE Fully Illustrated CATALOG**  
 \$10.00 outside the U.S., Canada, & Mexico

**Joseph E. Spires**  
 ATTORNEY-AT-LAW

Ward & Spires, LLC  
 445 Walker Street  
 Augusta, Georgia 30901

Phone (706) 724-2640  
 Facsimile (706) 724-2642  
 E-mail: [Wardspires@aol.com](mailto:Wardspires@aol.com)

**State Farm**

**Keith Perret, Agent**

2350 Washington Road  
 Augusta, GA 30904-3162  
 Cell 225-326-4014  
 Bus 706-925-LIFE (5433) Fax 706-434-0438  
[keith@kpinthehouse.com](mailto:keith@kpinthehouse.com)

[kpinthehouse.com](http://kpinthehouse.com)

The greatest compliment you can give is a referral.



**Stuckey's** SINCE 1937

Founded in 1937 by W.S. Stuckey, Sr.  
 with a Model A Ford & a \$35 Loan

Come Visit Us! • 705 S. Main Street • Wrens, GA  
[stuckeys.com](http://stuckeys.com)

**Super Shine** CAR WASH

 [mrcarwash](https://www.instagram.com/mrcarwash)  
[mrcarwashga.com](http://mrcarwashga.com)  
[supershinecarcare@gmail.com](mailto:supershinecarcare@gmail.com)


**Broderick "Brodie" Godbee**  
 LICENSED AND INSURED  
 Hand Wash, Wax and Custom Detailing

678-325-8448  
 134 Davis Rd.  
 Martinez, GA 30907

4750 Washington Rd.  
 Evans, GA 30809

**JAMIE & LANIER DUKES**  
 Owners

**Wife Saver** RESTAURANTS



CATERING AVAILABLE

3316 Washington Road  
 Martinez, Georgia 30907  
 706-860-2605  
[lanierdukes123@gmail.com](mailto:lanierdukes123@gmail.com)