

# SHADE TREE A's



## NEWSLETTER



July 2024

Volume 51

Number 7



4424 Reynolds Street  
Hephzibah GA 30815-7909  
Website: <http://www.ShadeTreeAs.org>





<b>President</b> Craig McMullin	803-341-8955 pres@ShadeTreeAs.org
<b>Vice President</b> Andrew Morse	706-834-2342 vp@ShadeTreeAs.org
<b>Secretary</b> Frank Knapp	706-736-5238 sec@ShadeTreeAs.org
<b>Treasurer</b> Stuart Smith	706-825-9441 treas@ShadeTreeAs.org
<b>Tour Director</b> Darren Riley	803-230-9510 tourdir@ShadeTreeAs.org
<b>National Director</b> Steve Spencer	706-294-2176 nationaldir@ShadeTreeAs.org
<b>Board of Directors</b> Darren Riley	803-230-9510 bod1@ShadeTreeAs.org
<b>Board of Directors</b> Jim McPherson	706-564-0120 bod3@ShadeTreeAs.org
<b>Advertising Coordinator</b> Matt Barrett	706-799-3699 ads@shadetreeas.org
<b>Club Chaplain</b> Ralph Neitzke	706-863-6158 chaplain@shadetreeas.org
<b>Era Fashions</b> Anne Neely-Beck	478-945-3736 erafashions@ShadeTreeAs.org
<b>Librarian</b> Pat Riley	803-417-6583 librarian@shadetreeas.org
<b>Membership Coordinator</b> Frank Knapp	706-736-5238 membership@ShadeTreeAs.org
<b>Newsletter Editor</b> Robbie Jones	706-860-2758 newsletter@ShadeTreeAs.org
<b>Photographer</b> Sheila McPherson	706-592-4835 photographer@ShadeTreeAs.org
<b>Webmaster</b> Dan Perla	706-373-5730 webmaster@ShadeTreeAs.org



## CONTENTS

### Columns

Off the Running Board	3
Meeting Minutes	3
Club Calendar	5
Announcements	
Shade Tree A's Member News	6
Refreshment Schedule	6
Birthdays	6
Other Sundry Announcements	7

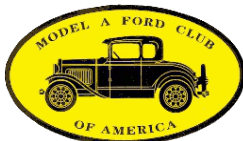
### Recent Events

Queen City Model A Club Tour to Augusta, GA	16
Shade Tree A's Saturday Technical Session	18
Model A Era Fashion and Style	19
The Shade Tree A's - Thirty Years Ago	24
Technical Topics	25
Advertisements	26

### On the Front Cover

Shade Tree A's members Steve Spencer, Darren Riley, Jim McPherson, Frank Knapp, Kenny Adkins and Robbie Jones (behind the camera) take a much needed break from working on Steve's sister's Model A during the Shade Tree A's June Technical Session held at Steve's house. Photo by Robbie Jones.

## SHADE TREE A'S MODEL A CLUB



The Shade Tree A's Model A Club is a non-profit organization dedicated to the preservation and the restoration of the Model A Ford automobile. Shade Tree A's annual dues are only \$25. Members are urged to join the Model A Ford Club of America ([www.mafca.com](http://www.mafca.com)) and the Model A Restorer's Club ([www.model-a-ford.org](http://www.model-a-ford.org)) to enjoy the benefits of these national organizations including their respective magazines: *The Restorer* (MAFCA) and *Model A News* (MARC). The Shade Tree A's club is also a member of MAFFI, the Model "A" Ford Foundation, Inc.



#### CONTACT INFORMATION

4424 Reynolds Street  
Hephzibah GA 30815-7909  
Website: <http://www.ShadeTreeAs.org>

#### ABOUT THIS NEWSLETTER

© 2024 Shade Tree A's, except as noted.  
Please contact Robbie Jones at [Newsletter@ShadeTreeAs.org](mailto:Newsletter@ShadeTreeAs.org) concerning reprinting of articles, illustrations, or photos.

## OFF THE RUNNING BOARD

*Craig McMullin - President*

If you happened to miss the last STA Membership meeting or just need some additional information about an upcoming event, there is a good chance that you can get caught up by referring to the latest Club newsletter. At meetings and in the interest of time, only highlights are discussed on most subjects. There is much more information in the almost 30 pages of text from our award-winning Editor, Robbie Jones.

If you are planning to travel to Asheville, NC for the MARC National Meet and want to travel with a group, please call our Tour Director, Darren Riley. Darren is compiling a list of folks and their mode of travel and dates to help coordinate the event. Darren is doing a great job as Tour Director so give him a call.

Get your spare Model A parts and your list of needs together as the Annual STA Swap Meet will take place on August 16 and 17 in Thomson, Ga. Our Vice President, Andrew Morse and Director, Jim McPherson have been working hard on this event for the past many months. See the attached flyer in this and past newsletters. Lunch will be available, so bring your walking shoes and some cash for all those Model A purchases.

Ahooga,

*Craig McMullin* - President

## MEETING MINUTES

*June 10, 2024*

*Richard's Garage*

*Respectfully submitted: Frank Knapp - Secretary*

The monthly meeting of The Shade Tree A's was held June 10, 2024 in the clubhouse meeting room at Richard Dunevent's garage. President Craig McMullin brought the meeting to order at 7:00 PM welcoming all twenty-four members and one guest present. Dennis Villemain, a guest of John Neumar, was also welcomed by the group. Only one member contributed to our Name Tag Penalty Cup.

John Neumar offered our "Joke of the Month". Five STA members with June birthdays were recognized.

Misty Hooker has undergone surgery and early reports indicate all went well. Unfortunately, Ralph Neitzke had to be hospitalized once again for another heart procedure but is home doing well.

*Continued on next page*

### MONTHLY MEETING TIME & LOCATION

Meetings are held on the second Monday of each month at Richard Dunevent's garage, 4338 Owens Road, Evans, Georgia. Meetings begin at 7:00 PM and are followed by refreshments.

## MEETING MINUTES

*Continued*

Vice President: Andrew Morse announced our technical program will be "Model A Door Alignment".

Treasurer: Stuart Smith reported no expenditures were paid or deposits made during the month of May leaving our treasury basically unchanged.

A motion was made and seconded to approve the Treasurer's Report and the May Meeting Minutes as published in *The Newsletter*. That motion passed by unanimous vote.

National Director: Steve Spencer reported he has submitted articles concerning STA Activities for publication in *The Restorer* and *Model A News* for the upcoming July-August issues.

Newsletter Editor: No report given.

Tour Director: Darren Riley asked members who are planning to attend The MARC National Meet in July indicate their plans such as driving a Model A, modern car, or trailering. He is hard at work coordinating the trip to Asheville!

Also, President Craig informed the group we have been invited to join several South Carolina Model A Clubs to celebrate International Model A Day with a tour to Orangeburg, S.C. on Saturday, September 21<sup>st</sup>. Activities will include lunch at Crossroads Country Buffet followed by a tour of Edisto Gardens. Once again, President Craig challenged members to have at least twenty STA Model A's make the trip.

Show & Tell: Nothing offered.

Old Business: Members were asked for comments on several recent events including Josh and Rebecca's "Grandpa's Low Country Boil", The Magnolia Ridge Antique Flee Market, The Aiken Memorial Day Parade, and The Queen City Model A Club's visit to Augusta.

New Business: The following tours and events were brought to the attention of members The Palmetto A's Model A and T Swap Meet, a Cruise-In at Journey Community Church, our STA Technical Session on Saturday June, 22<sup>nd</sup> and The MARC National Meet July 15<sup>th</sup>-18<sup>th</sup>. Members were also advised of the upcoming GasCar 50<sup>th</sup> Anniversary Car Show to be held June 29<sup>th</sup> at C&C Automotive on Washington Road.

Technical Program: Andrew Morse's detailed program on "Model A Door Alignment" was well received by the group. Andy brought along his '30 coupe (under restoration) showing the many different problems and solutions for misaligned doors.

Just another excellent Technical Program by Andy! Well done!

There being no further business, the meeting was adjourned at 8:05 PM after which members enjoyed refreshments provided by Darren & Pat Riley, Kenny Adkins and Darrell & Syble Henderson.



## CLUB CALENDAR

### *Shade Tree A's Events*

#### July

8 Shade Tree A's Meeting, 7:00 PM, Richard's garage (Technical Program: *TBA*)

#### August

16-17 Shade Tree A's Swap Meet, Thomson, GA

22 Shade Tree A's Annual Dinner Meeting, 6:00 PM, Sconyer's Bar-B-Que

#### September

9 Shade Tree A's Meeting, 7:00 PM, Richard's garage (Technical Program: *TBA*)

#### Every Wednesday at 11:00

Join the Shade Tree A's for lunch at Cicis Pizza on Wheeler Road

*TBA - To Be Announced*

### *Other Events of Interest*

#### July

15-18 MARC National Meet, Asheville, NC, additional details provided later in the *Newsletter*

#### September

21-22 MAFFI Model A Days, Model A Ford Museum on the Gilmore Car Museum campus in Hickory Corners, MI

#### October

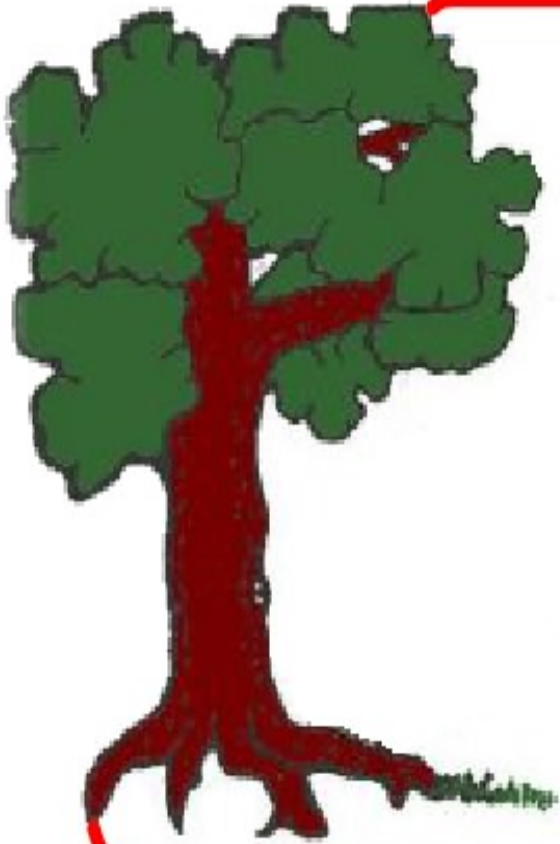
8-11 AACA Eastern Fall National Meet, Hershey, PA

23-26 AACA Southeastern Fall National Meet, Huntsville, AL

#### December

11-14 MAFCA National Awards Banquet and Mini Convention, Salt Lake City, UT

## ANNOUNCEMENTS



### *Shade Tree A's Member News*

- Please continue to keep the following Shade Tree A's members in your thoughts and prayers:
  - Craig McMullin had recent surgery and is recovering.
  - Misty Hooker's recent surgery went well and she is now recovering.
  - Ralph Neitzke is recovering from a recent heart procedure.
  - Janet Neumar being treated for lung cancer.
- Old 96 club member, Warren Reynolds, is doing better but still recovering from a recent accident while working on a Model A.

*Send items for Shade Tree A's Member News to:*  
[newsletter@ShadeTreeAs.org](mailto:newsletter@ShadeTreeAs.org)



### **Refreshment Schedule**

July

**Robert & Sandra Reis**, Don Gordon,  
Misty Hooker

August

No refreshments needed due to the  
Sconyer's dinner meeting

September

**Matt Barrett**, Steve Teal, Frank Knapp

**The first person listed is the primary  
coordinator for the month**

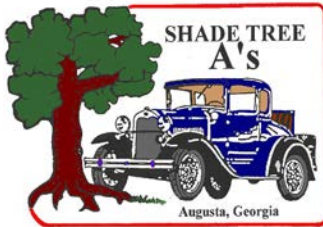


### **July Birthdays**

- 10 Greg Jones  
 21 Robert Collier Jr.  
 22 Don Turley



## ANNOUNCEMENTS



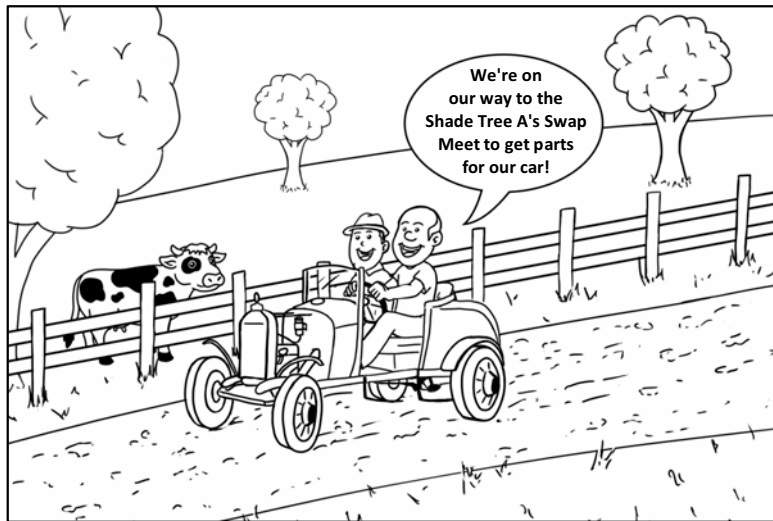
# Shade Tree A's Swap Meet

sponsored by the

*Shade Tree A's Model A Ford Club*

1818 Augusta Highway, Thomson, Georgia 30824

Friday, August 16 and Saturday, August 17, 2024, 8:00 AM until 2:00 PM



There is no Parking, Admission or Vendor fee for this event. Come enjoy your day with fellow Model A enthusiasts. This year we are sponsoring a special workshop on Model A distributors. See details below. Lunch available.

For more information, contact:

Andrew Morse

706-834-2342

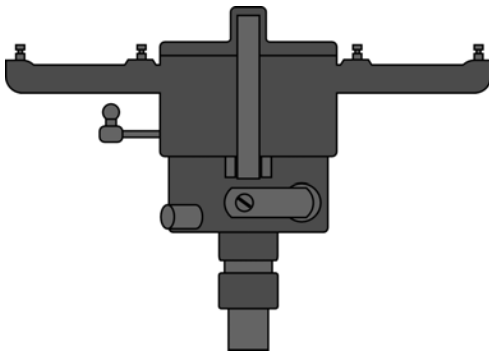
4morses@comcast.net

Jim McPherson

706-564-0120

## Distributor Diagnostics and Rebuilding Workshop

**SATURDAY, 10:00 AM – 12:00 Noon**



The Shade Tree A's are proud to present a hands on workshop on the Model A distributor. Have your distributor issues professionally evaluated, or get help rebuilding your distributor. Eric Shogren, owner of Guben's Garage, a Model A repair facility, will be available to evaluate your distributor or assist in rebuilding your distributor. Bring your distributor, and the new parts to rebuild it, and Eric will have the tools available to rebuild your distributor.

Smith and Jones Antique Auto Parts will be attending our Swap Meet. Contact Davin Smith with your parts order for delivery to the Swap Meet and save on shipping.

Phone: 803-822-4141, 800-422-1928; e-mail: [snjparts@gmail.com](mailto:snjparts@gmail.com)



For vendor registration, please contact Andrew Morse or Jim McPherson

## ANNOUNCEMENTS

### Join Us on a Tour to Asheville, NC and the Model A Restorer's Club 2024 National Meet

The Shade Tree A's are planning a tour to Asheville, NC to attend the MARC National Meet July 15-18. Will you join us? This is your opportunity to attend and participate in a national Model A event. I would expect 300 or more Model A's to be there, plus a variety of seminars, a swap meet, and era fashion events (meet schedule not yet available). There will be a Welcome Party, an Era Fashion Show/Ice Cream Social, a Grand Tour on Thursday, and an Awards Banquet. You can choose which events you want to participate in. If you cannot attend the entire event, I would encourage you to look at the meet schedule and attend one or more days having events that interest you. Asheville is about 170 miles, and we can drive Highway 25 all the way. We have toured to Asheville and the surrounding area many times in the past. Some will drive their Model A, some will trailer their Model A (special trailer parking will be available), and some will drive their modern car. Robbie has posted the hotel information in the *Newsletter*. The host hotel was full in three days. A number of Shade Tree A's members have already indicated they will attend. Will you join us?

#### Lodging at the National Meet:

Many Shade Tree A's members are staying at the Holiday Inn Express, Asheville SW, Outlet Center, 12 Rocky Ridge Road. The local phone number is 828-665-6519. Use the code "The Nashville A's" to get the meet rate. The phone number listed in the Meet Announcement is for the National Reservation Line.

Additional information is provided on the following pages. Registration forms are included in the January/February 2024 issue of the *Model A News* magazine.



Photo by Robbie Jones



## ANNOUNCEMENTS

**ASHEVILLE, N.C. MARC NATIONAL MEET**  
**JULY 15TH-18TH. 2024**

**BOOKING IS NOW OPEN AT THE HOST HOTEL!**



**CROWNE PLAZA RESORT ASHEVILLE**

**1 RESORT DRIVE, ASHEVILLE, NORTH CAROLINA 28806**

**ROOMS ARE \$169.00\* PER NIGHT TEL: 1-844-330-0296**

**GROUP CODE: NASHVILLE A'S 2024 OR ON LINE AT:**

**WWW.ASHEVILLECP.COM 2. CHECK AVAILABILITY (ENTER DATES OF STAY)**

**ENTER GROUP CODE: MDA**



**"DON'T BE BASHFUL...  
MEET US IN ASHEVILLE"**

**FOR MORE INFORMATION PLEASE CONTACT YOUR MEET CHAIRMAN**

**PAUL GANNINGER 314-852-5591 OR EMAIL MARCMEET2024@GMAIL.COM**

\*PLUS TAXES, ALL ROOMS AT HOST HOTEL WILL REQUIRE A 1 NIGHT DEPOSIT PER ROOM & NAMES FOR EACH ROOM BOOKED. MAXIMUM OF 2 ROOMS.

**HOSTED BY THE NASHVILLE A'S REGION**





# ANNOUNCEMENTS

## ASHEVILLE 2024 MARC NATIONAL MEET

### JULY 15TH-18TH 2024

### BOOKING IS NOW OPEN

### AT THESE ADDITIONAL HOTELS!

HOSTED BY THE NASHVILLE A'S REGION




	<p><b>COUNTRY INN &amp; SUITES ASHEVILLE RIVER ARTS DISTRICT</b>  <b>22 WESTGATE PARKWAY, ASHEVILLE, NC</b>  <b>TEL: 1-828-772-3188</b>  <b>\$109.00 PER NIGHT* INCLUDING BREAKFAST</b>  <b>CODE: NASHVILLE A'S</b>  <b>.03 MILES FROM HOST</b></p>
	<p><b>HOLIDAY INN ASHEVILLE-BILTMORE WEST</b>  <b>435 SMOKEY PARK HIGHWAY, ASHEVILLE,</b>  <b>NC 28806 TEL: (828) 665-2161</b>  <b>\$105.00 PER NIGHT*</b>  <b>CODE: THE NASHVILLE A'S</b>  <b>6.1 MILES TO HOST</b></p>
	<p><b>HOLIDAY INN &amp; EXPRESS, ASHEVILLE SW - OUTLET CTR</b>  <b>12 ROCKY RIDGE ROAD, ASHEVILLE, NC 28806</b>  <b>TEL: 1-888-465-4329</b>  <b>\$108.00 PER NIGHT* INCLUDING BREAKFAST</b>  <b>CODE: THE NASHVILLE A'S</b>  <b>5 MILES TO HOST</b></p>
	<p><b>COMFORT SUITES OUTLET CENTER</b>  <b>890 BREVARD RD., ASHEVILLE, NC, 28806</b>  <b>TEL: (828) 665-4000</b>  <b>\$85.00 PER NIGHT* INCLUDING BREAKFAST</b>  <b>CODE: THE NASHVILLE A'S OA55F3</b>  <b>6.5 MILES TO HOST</b></p>



**CAMPING: THE PARKWAY HAS FOUR CAMPING AREAS IN THE ASHEVILLE AREA, OPEN APRIL OR MAY THROUGH OCTOBER. CAMPING IS \$20/NIGHT FOR ALL CAMPGROUNDS, FIRST-COME FIRST-SERVE. ADVANCE RESERVATIONS ACCEPTED AT ALL CAMPGROUNDS EXCEPT CRABTREE FALLS. CAMPING ALONG THE PARKWAY IS PERMITTED ONLY IN DESIGNATED CAMPGROUNDS. CALL 828-765-6082 FOR MORE INFORMATION**

“DON'T BE BASHFUL, MEET US IN ASHEVILLE”

FOR MORE INFORMATION PLEASE CONTACT YOUR MEET CHAIRMAN

PAUL GANNINGER 314-852-5591 OR EMAIL MARCMEET2024@GMAIL.COM

\*PLUS TAXES, ALL ROOMS AT HOST HOTEL WILL REQUIRE A 1 NIGHT DEPOSIT PER ROOM & NAMES FOR EACH ROOM BOOKED. MAXIMUM OF 2 ROOMS.



## ANNOUNCEMENTS

### ASHEVILLE, N.C. MARC NATIONAL MEET JULY 15TH-18TH. 2024

**THE GRAND TOUR THURSDAY JULY 18, 2024. TO THE "BLUE RIDGE PARKWAY"**

**THE BLUE RIDGE PARKWAY NEAR ASHEVILLE IS ONE OF THE MOST BEAUTIFUL DRIVES IN AMERICA**

COUNTLESS PEOPLE FLOCK TO THE MAJESTIC MOUNTAINS OF NORTH CAROLINA THROUGHOUT THE YEAR TO ESCAPE TO ITS PEACEFUL TRANQUILITY AND BREATHTAKING BEAUTY. ONE OF THE MOST ICONIC ATTRACTIONS OF THIS AREA IS THE STUNNING BLUE RIDGE PARKWAY, A WINDING ROUTE THAT FEATURES JAW-DROPPING VIEWS AND OUTSTANDING OUTDOOR RECREATION. FILLED WITH THRIVING PLANTS AND WILDLIFE, THIS IS ONE OF THE BEST PLACES IN THE STATE TO VISIT FOR A RELAXING TRIP IN THE CRISP, MOUNTAIN AIR. "AMERICA'S FAVORITE DRIVE,"

#### WHERE DOES THE BLUE RIDGE PARKWAY START?

THE BLUE RIDGE PARKWAY STARTS IN SKYLINE DRIVE OF SHENANDOAH NATIONAL PARK IN VIRGINIA AND STRETCHES ALL THE WAY TO THE GREAT SMOKY MOUNTAINS NATIONAL PARK IN CHEROKEE, NORTH CAROLINA. THERE ARE NUMEROUS BLUE RIDGE PARKWAY ACCESS POINTS SCATTERED ALONG THIS RANGE. EACH ACCESS POINT HAS A SYMBOL THAT INDICATES IF IT IS WHEELCHAIR ACCESSIBLE AND IF IT CONTAINS A PICNIC AREA. SOME INCLUDE VISITOR CENTERS, RESTROOMS, EXHIBITS, AND MORE.

#### WHAT ARE SOME THINGS TO DO ALONG THE BLUE RIDGE PARKWAY?

ALONG THE BLUE RIDGE PARKWAY HIKING IS AN OPTION IN MANY SPOTS, PROVIDING AMAZING VIEWS OF MOUNTAINS AND WATERFALLS ALONG EACH ROUTE. YOU CAN ALSO CHOOSE TO SIMPLY DRIVE ALONG THE BLUE RIDGE PARKWAY NEAR ASHEVILLE, ADMIRING THE ABUNDANCE OF SCENIC SIGHTS ALONG THE WAY. THERE ARE MANY OVERLOOK AREAS WHERE YOU CAN STOP TO TAKE PICTURES TO COMMEMORATE YOUR TRIP TO THIS GORGEOUS REGION. PICNICKING, BIKING, AND FISHING ARE PERMITTED IN CERTAIN AREAS HERE AS WELL. BE SURE TO CHECK THE ROAD CONDITIONS BEFORE YOU EMBARK ON YOUR DRIVE AND STAY VIGILANT OF SPEED LIMIT SIGNS.



**PLEASE NOTE: THE PARKWAY IS A NATIONAL PARK AND THERE ARE NO FEES OR STICKERS NEEDED TO TRAVEL IT.**



**"DON'T BE BASHFUL...  
MEET US IN ASHEVILLE"**

FOR MORE INFORMATION PLEASE CONTACT YOUR MEET CHAIRMAN  
PAUL GANNINGER 314-852-5591 OR EMAIL [MARCMEET2024@GMAIL.COM](mailto:MARCMEET2024@GMAIL.COM)



HOSTED BY THE NASHVILLE A'S REGION



## ANNOUNCEMENTS



### It's Really an Annual MAFCA Mini Convention

December 11<sup>th</sup> through 14<sup>th</sup> 2024

**Welcome to Salt Lake City!** We invite you to attend the 2024 National Awards Banquet and Mini Convention, hosted by the Utah Valley Model A Club, Salty As and Beehive As.

The activities will originate from the Salt Lake City Marriott University Park Hotel at 480 S Wakara Way, Salt Lake City, UT, 84108. For reservations call 801-581-1000 or book online at the [Marriott booking portal](#). Special Awards Banquet room rates are \$129. From its location near the University of Utah campus, you can get a view of the entire Salt Lake Valley.

Plan on arriving Wednesday December 11<sup>th</sup> in time for the Welcome Reception at 7:00 p.m. Stay through Saturday night, December 14 and attend the Tabernacle Choir at Temple Square live broadcast of *Music and the Spoken Word* on Sunday morning. This broadcast runs from 9:30 to 10:00 a.m.



**Wednesday December 11<sup>th</sup>: Welcome Reception** Reconnect with your nationwide Model A friends while snacking on hors d'oeuvres with the help of a no-host bar. (Yes, you can get a drink in Utah.) Enjoy the floor show we have planned for your entertainment.



### Thursday December 12<sup>th</sup>: Seminars and Fashions Workshop

Three seminars to inform and entertain are on the docket for this day. Take the Ultimate Model A Quiz; learn about Utah History; and a special appearance by nationally known Ford scholar, Henry Dominguez who will tell us about Edsel Ford's contribution to the development of the Model A. Running concurrently will be a fashions workshop where you can make items to add to your period attire collection.



**Friday December 13<sup>th</sup>: A day trip to Promontory Summit** We'll take you to the Northrup Grumman Rocket Garden on the way to Promontory Point where the Golden Spike was driven on May 10<sup>th</sup> 1869. The locomotives are under maintenance this time of year, so we will be given a tour of the Engine House to see the work that's going on in there.



**Saturday December 14<sup>th</sup>: Salt Lake City Bus Tour** This half-day professional history tour will take you to see the end of the Mormon Trail, Pioneer Village, the State Capitol Building, the Cathedral of the Madeleine, and Temple Square where we will enjoy a live organ recital in the Tabernacle. That evening, come enjoy the no-host bar and Awards Banquet.



## ANNOUNCEMENTS

# The NEW Model A Days

## Presenting Two Special Events\*

### The Model A Driving Experience & The Unveiling of the 31-AA Bus

## Friday & Saturday September 20-21 2024

**Pre Registration for the 2024  
Special Events Sponsored by  
The Southeastern Touring Group**

Registration Opens on May 2nd, 2024, follow the link at [MAFFI.org](http://MAFFI.org)

**Join Us For Dinner and A Special Presentaion as we  
Unveil The 31-AA Bus At The Newley Designed Carriage House  
Event Center On The Gilmore Campus**

**Host Hotel Info: Delta Hotels by Marriott, 2747 S. 11th St.  
Kalamazoo, MI 49009 269.375.6000**




MODEL A DAYS SEPTEMBER 20-21, 2024 LOCATED ON THE GILMORE CAMPUS,  
6865 W. HICKORY RD. HICKORY CORNERS MI. 49009

For event Info, seminars & Swap Reservations  
Mark Maron 847-302-7900

**\*Requires PRE- Registration**

## ANNOUNCEMENTS



### Model A Enthusiasts:

Don't you cherish these days when we can go cruisin' in our precious Model A's? Are you decked out in Model A gear? If not, that's an easily remedied problem. Just go to the MAFFI website collection ([maffi.org](http://maffi.org) -click on "store") and choose one---or some! It's a "fashionable" way to support your hobby!!



As of June 20, we're only 92 days away from Model A Days at the Gilmore Auto Museum! The Model A Days' Planning Committee is nearly ready for the big event. We're excited and we hope you make plans to join us. While you're on that website getting your Model A gear, click on the link for Model A Days and get registered for your hotel and Model A Days: Friday, September 20 and Saturday, September 21. You don't want to miss the unveiling of the "bus", do you?



The Gilmore Auto Museum has been in construction mode these last few months so there are a lot of changes at the museum (picnic spots, food and beverage facilities, and more restrooms). We're excited to have so much to offer you this year at Model A Days! Motor on in to Hickory Corners in September!!

Cindy Ellenbecker, MAFFI Trustee/Secretary



## ANNOUNCEMENTS

*Model A Ford*  *Club of America*

250 So. Cypress La Habra, California 90631-5586

562-697-2712 ♦ [www.mafca.com](http://www.mafca.com)

---

### June 2024 President's Flying Quail Message

I just completed a 3,500 miles round trip adventure in my 1930 Sedan Delivery. I traveled from Texas through Louisiana, Mississippi, Alabama, Georgie, South Carolina, North Carolina and Virginia and back again in just 14 days. I am proud to report that car made the trip without a single issue, no accidents were incurred and I averaged a little over 18 miles per gallon. It was a bit of whirlwind trip but I couldn't pass up an opportunity to visit the Outer Banks of North Carolina once again in my Model A. I am proud to report that all along the way the car garnered interest and comments whenever I would stop for fuel, food, hotels or sightseeing. People in general are infatuated with old cars and especially want to know if you drove them to whichever destination you happen to be. Stop for fuel in say Virginia with Texas license plates on your car and I'll guarantee the first question will be: "Did you drive that thing all the way here?" I always get a kick answering, "yes I did and I'm going to drive it back home also."

I'm also a member of the AACA and I enjoyed Stacy Zimmerman, the Speedster Editor's comments in the most recent AACA Speedster Newsletter that "Every time you drive your car, talk about your car, and even allow someone to simply sit in your car, your passion for this hobby is visible to everyone by the smile on your face and the enthusiasm in your voice." When we share our cars in public, allow people to touch them, sit in them or even honk the horn we are, at that time, ambassadors for our hobby, our respective clubs and ourselves. Stacy went on to say: "Have you ever heard the phrase... people join people? It's totally true! We always say that everyone initially comes for the cars, but that they stay because of the people. We need to be in this together." I think Stacy has hit the nail squarely on the head. Get out there and be an ambassador for your local club, MAFCA and the Model A hobby in general. People will be captivated by your enthusiasm for our cars and our hobby and we will all grow from it.

Even though I am barely home from my trip to the Outer Banks I am beginning to plan my routes for driving to Ruidoso and attending the 2024 MAFCA National Convention. The Southwest Model A's have created an excellent convention for us and I'm looking forward to the cooler air in Ruidoso, NM. Ruidoso's altitude will give me a welcome reprieve from the sweltering humidity and hot temperatures of Southeast Texas. Right now, we have five cars caravanning. Three cars from Texas, one from North Carolina and one from Oklahoma. Our routes include stops for some classic Texas historical spots, plenty of chicken fried steak and Mexican food to boot. My wife has a tee shirt she wears that sums it up: *All we do is drive around and eat!* And with all of this, don't forget an essential stop at Dairy Queen for ice cream at least a couple of different times during the trip. There is always room for ice cream.

"See you down the road!" Robert Bullard

## RECENT EVENTS

### Queen City Model A Club Tour to Augusta, GA

*Story by Robbie Jones*

*Photos by Matt Barrett*

On Saturday, June 1, 2024, the Shade Tree A's joined the Queen City Model A Club from Charlotte, North Carolina at Sconyers Bar-B-Que for dinner. The Queen City club toured to Augusta to visit some of the area's attractions. Some of the places they visited were the Augusta Museum of History, the Enterprise Mill and the Augusta Canal. They even enjoyed lunch at the Sno-Cap drive-in in North Augusta. Shade Tree A's member, Matt Barrett, joined up with them at several locations and provided the photos below.





## RECENT EVENTS

### Queen City Model A Club Tour to Augusta, GA

*Continued*





## RECENT EVENTS

## Shade Tree A's Saturday Technical Session Another First for the Shade Tree A's

*Story by Jim McPherson*

*Photos by Robbie Jones*

After how many years, the Shade Tree A's FINALLY held their first Technical Session at the home of a member! We were invited by Steve Spencer to his garage on Saturday June 21<sup>st</sup> to help with the initial start-up of Paula Mason's (Steve's sister and fellow STA member) Model A, a 1930 Tudor Sedan, which had been sitting in her garage in Kentucky for many years. When we arrived, we were met with pastries and drinks by Rita Spencer. Rita sure knows how to ensure a return visit, if one is ever required. THANKS Rita! We evaluated a block repair near the exhaust port using JB Weld, and a rebuilt Tillotson carburetor before assembly. Once assembled, the Model A started right up, and without an exhaust leak. Darren Riley also trailered Woody Merry's 1928 Tudor Sedan to the Technical Session for evaluation of engine noise. Many suggestions were offered, but no definitive diagnosis. Those attending were Robbie Jones, Kenny Adkins, Frank Knapp, Darren Riley, Jim McPherson, and Steve and Rita Spencer.





## MODEL A ERA FASHION AND STYLE

*The following article has been provided by MAFCA*

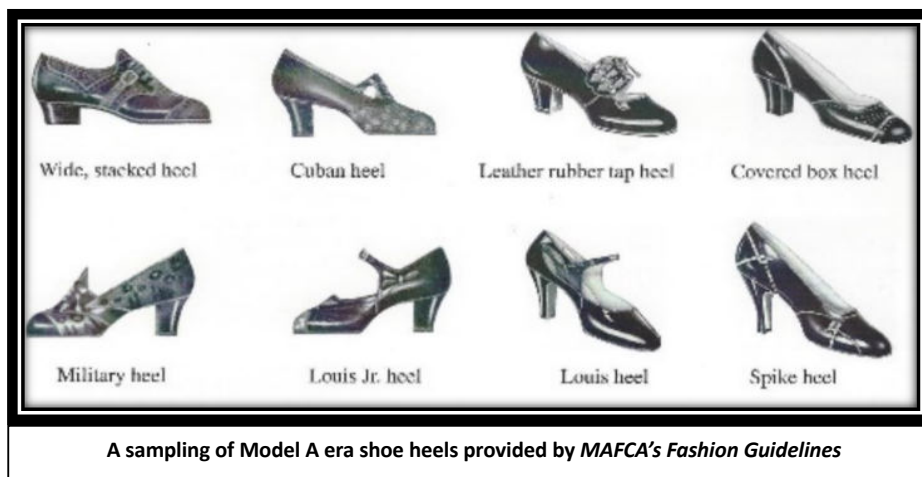


### Stepping Out in Style: Distinguishing the Model "A" Era Lady's Shoe Heel

*By Lynda Davis, Dallas and Fort Worth Model A Clubs*

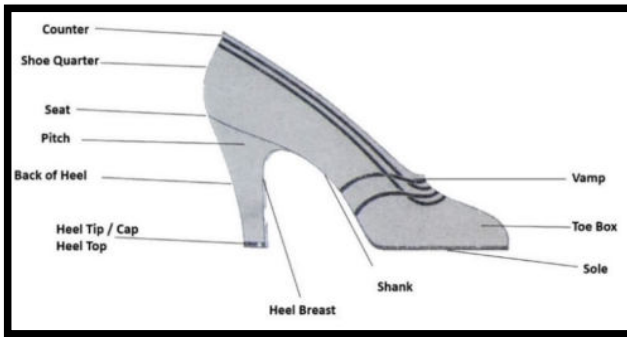
Now more than ever, Model A era reproduction shoes for ladies are readily available at our favorite stores. Nostalgic fashion modes arose after a series of Depression-era films, such as *The Artist* (2011), *The Great Gatsby* (2013), *Boardwalk Empire* (2010-2014), and *Downton Abbey* (2010-2015), encouraged a new generation of vintage fashion enthusiasts. In the wave of these films, access to reproduction wear increased. Retailers specializing in vintage fashions are popping up in the U.S. and Europe. Companies such as American Duchess (the images to the right, taken from their website, illustrates their historical accuracy), Miss L. Fire, and dance-shoe companies offer era-correct shoes. However, each era fashion enthusiast must do his or her own research to vet each fashion purchase. This article focuses on recognizing Model A era shoe heels and matching heel height to the complementary dress-hem length.

Many of us recognize the typical Ladies' Model A era shoe; however, distinguishing the "competition worthy" heel may be more difficult. Modern ladies' shoes may have "the look" of our era; however, the heel is not always accurate. For instance, the figure to the left shows a shoe currently available by a major manufacturer. Its tall, rectangular heel is significantly dissimilar to the Model A era heels illustrated in the below figure found in the *MAFCA Fashion Guidelines*. While the top portion of this pair conforms to the era's T-Strap appearance, wearing them in a competitive venue will result in points lost. If you purchase a pair of modern shoes with an era look but without the era heel, wearing them for fun is always an option.



A sampling of Model A era shoe heels provided by MAFCA's Fashion Guidelines

## MODEL A ERA FASHION AND STYLE

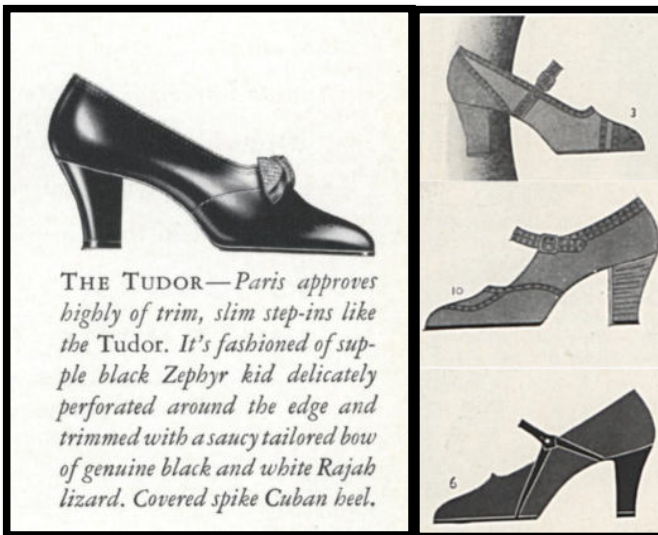


Anatomy of the Model "A" Era Shoe

While this article defines popular Model A era heels, distinguishing one style from another can be difficult. As the *MAFCA Fashion Guidelines* states, "[T]hough there were several types of heels, they are not always identified the same by different manufacturers" (3E2). Indeed, when researching primary sources from 1928-1931, one will often see the heel names used interchangeably. Knowing the proper names for heels is less important than recognizing their look.

Therefore, to help Model A era fashion enthusiasts find period-correct shoes, this article covers the characteristics of some of the most popular shoe heels for women—such as the Cuban, Military, French / Louis, and Spike heels.

### The Cuban Heel:



THE TUDOR—Paris approves highly of trim, slim step-ins like the Tudor. It's fashioned of supple black Zephyr kid delicately perforated around the edge and trimmed with a saucy tailored bow of genuine black and white Rajah lizard. Covered spike Cuban heel.

Around the mid-1920s, the Cuban heel began to dominate ladies' shoe fashion, surpassing the long-popular, hour-glass shaped Louis heel. By April 1927, the fashion magazine *Vogue* reports famed New York shoe designer A. J. Cammeyer's plans to make Cuban heels "the key-note of his walking shoes."

Common in western wear, the Cuban's square heel (usually made from stacked leather or wood, sometimes covered in material) has a straight front or breast. (See image "Anatomy of a Model "A" Era Shoe.") However, the backline slopes gradually—along with

the sides—towards the heel's cap. There is a bit of a curve that the Military heel lacks. This style makes the heel suitable for both work boots and dressy fashion shoes (Dyer 6). Indeed, *Vogue* reports that both Saks-Fifth Avenue and I. Miller planned to offer Cuban-heeled shoes in styles for both day and evening and in varying heights—Saks introduced two heights and I. Miller introduced three: low, "designed primarily for comfort"; medium, for walking; and a high-heel, which *Vogue* called a "dizzily high . . . heel that has been gaining ground."





## MODEL A ERA FASHION AND STYLE

For evening wear, Cuban heels were often affixed extravagantly with “rhinestones, mock tortoiseshell or cloisonné enamel” (Cox, *Vintage Shoes* 31) (see the above image of three rhinestone heels. The Cuban is at the left, and Louis heels are center and right). One distinguishing feature of the Cuban is that oftentimes the heel is a “knock-on,” which means “the sole leather does not continue down the [shoe’s] breast, but rather the heel is constructed completely, then attached, with no further crafting” (*American Duchess*).

### The Military Heel:

The Military heel, “built upon the Cuban design” (*The Shoe Retailer*, 77), is almost a twin to the Cuban. With straight sides and back line, it doesn’t taper like the Cuban does. While it throws the foot a little forward, it is more supportive because the surface area at the cap is larger than the Cuban. For these reasons, it is a popular heel for women’s walking and sport shoes, cowboy boots, and children’s shoes. Initially, the Military heel was a low or short heel. The 1921 *Merchandise Manual for Shoe Departments* describes the heel as never exceeding the height of the Cuban. By the Model A era, however, catalogues and periodicals show Military heels mirroring the height of the Cuban.



### Louis Heel (Sometimes called the French Heel):

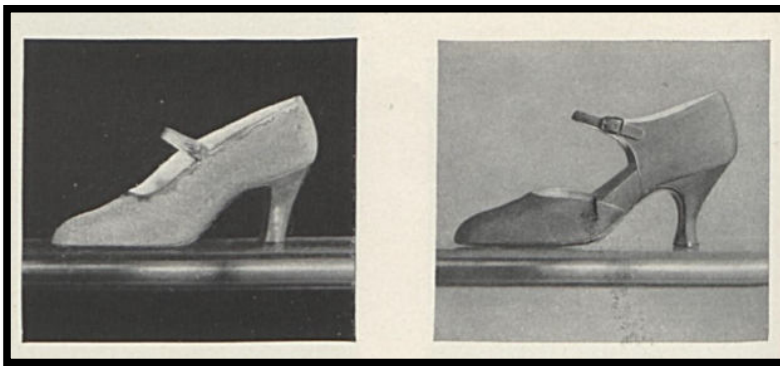
This article treats the Louis and French heels together as identical. In fact, the *Merchandise Manual for Shoe Departments* reports that “some shoe men say that the French and the Louis XV heels are practically the same.” The heel is named for King Louis XV of France; later, due to the inward curve at the heel’s waist and its resemblance to a thread spool, it achieved the nickname “the spooled heel.” By 1928, the hour-glass shape became less pronounced, more subtle and not as exaggerated as its earlier styles (see image below, a pair of Model A era Louis/French heels displayed at The Met in New York.) As a result, distinguishing between the Louis and the Cuban heels can be challenging. Often taller and thinner than the Cuban, this heel has a distinctive flirty curve, flaring out just above the heel cap. This style is popular with professional dancers, and era-image options are easily found in dance-shoe stores.



## MODEL A ERA FASHION AND STYLE

### Spike Heel (Sometimes called the Spanish Heel):

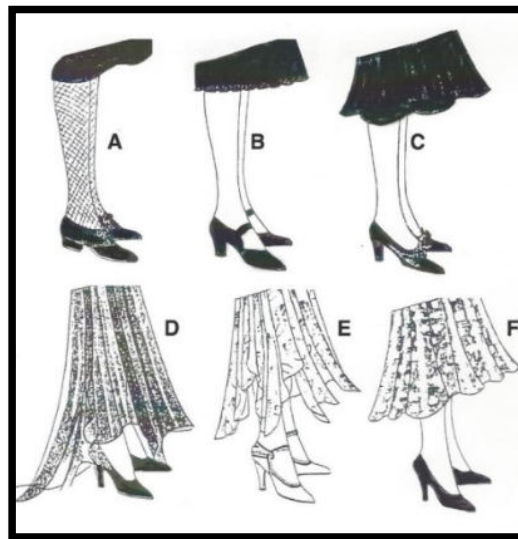
The Louis is sometimes confused with the Spike heel; however, the spike comes to a more narrowed and straight point at heel's cap. These heels are taller and thinner than the Cuban. They are straight-sided, tall, and tapering to a thin spike, from which it takes its name, and are typically constructed of "wood covered with textile or leather." The figure at right, taken from the Fall 1930 *Bellas* Catalog, is a nice illustration of a Spike heel. The figure below, taken from the February 1930 *Vogue*, visually juxtaposes the Spike with the Louis heel.



### Coordinating the Dress Hem with the Heel Height:

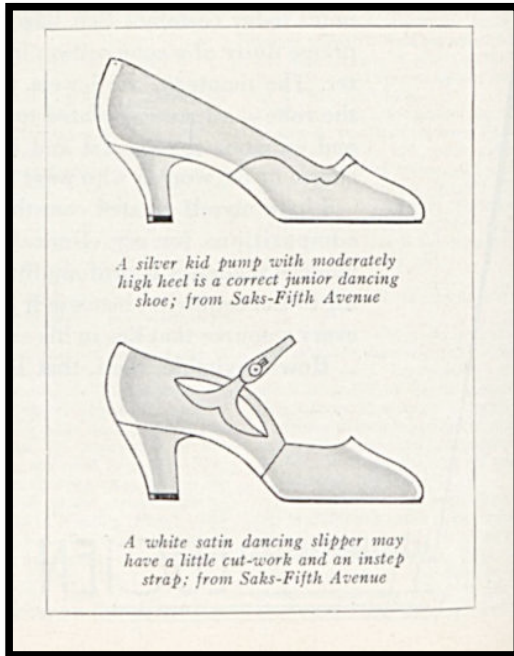
The *MAFCA Fashion Guidelines* provides a variety of helpful descriptions with illustrations to help fashion enthusiasts put together a period-accurate ensemble, including matching the appropriate heel height with the major garment. As the diagram at the right shows, the longer the dress hem, the higher the heel. Still, these may not be appropriate for young teens.

With great sensitivity to a teen girl's desire to cross the threshold into womanhood, *Vogue* addresses this conundrum in their August 15, 1927, issue, which I thought appropriate to transcribe and post verbatim below. The writer here provides suggestions to mothers of fifteen-year-old girls who go "into a shoe shop with [their minds] firmly set upon spike heels." We can take comfort in that, in this respect, nothing has changed during the last century. To this end, *Vogue* proposes a "perfect medium" appropriate for the "sub-débutante":





## MODEL A ERA FASHION AND STYLE



"The very high spike heel is the worst possible taste for a girl of fifteen. On the other hand, there is some justice in a girl's contention that she need not wear flat heels that are appropriate for her nine-year-old sister. For sports and for school, of course, her heels should be very nearly flat, just as her mother's golf shoes are; for afternoon and evening, she may wear a Cuban heel, a rather low French heel, or a modified spike heel. None of these should be really high, but they may very well approximate the heels of the smart woman's walking shoe, which is cut high enough to give a graceful line to the foot and take away any suspicion of a 'babyish' look."

The illustration at left is provided by *Vogue* for their "sub-débutante" article.

---

Looking for more information?

Anyone wanting to dress in the vintage style can easily find help from [Facebook](#) groups like [Vintage Menswear](#) and our own group page: [Model A Era Fashions – MAFCA](#). One may mine quite a bit of information and advice not only from [MAFCA Fashion Guidelines](#) but also from websites like [Vintage Dancer](#) and [Gentleman's Gazette](#) (both are hives of documented, research-based articles on fashions for both men and women and organized by decades). Even The Library of Congress has an era fashion blog, entitled "Women's Fashion History Through Newspapers." And members of [Genealogy.com](#) have access to 1928-1931 Sears catalogs. In fact, much of the information I collected for this article came from open resources found in [Google Books](#).

---

### Sources:

*American Duchess*: "What Kind of Heel Is That? A Quick Guide to Historical Shoe Heels" ([Americanduchess.com](#)); *MAFCA Fashion Guidelines*; *Merchandise Manual for Shoe Departments* by Elizabeth Dyer, January 1921; *Montgomery Ward & Co.*, Fall & Winter 1929-30; *M.W. Savage Co.* Minneapolis, Minn, Spring & Summer 1931; *National Bella Hess Co. Inc.*, New York City, 1928 and 1930; *The Shoe Retailer, Boots and Shoes Weekly*, July 20, 1904; *Vintage Shoes* by Caroline Cox, and *Vogue*, issues April 1, 1927, August 15, 1927, and February 15, 1930.

## THE SHADE TREE A'S – THIRTY YEARS AGO

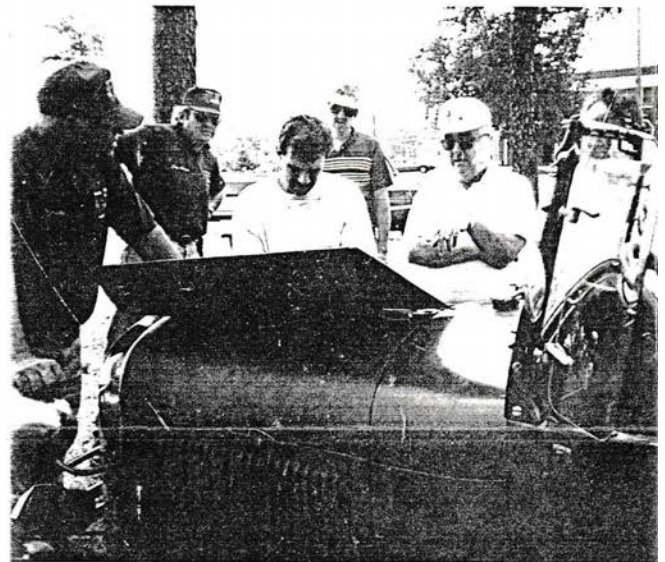


The 1985-2005 *Shade Tree A's Newsletters* are now available on the Shade Tree A's website. They can be accessed via the same "button" as the other *Newsletters*, but they are password protected. The same password used to access the member roster is used to access the *Newsletters*. Thank you Dan Perla for scanning these and posting on the website.

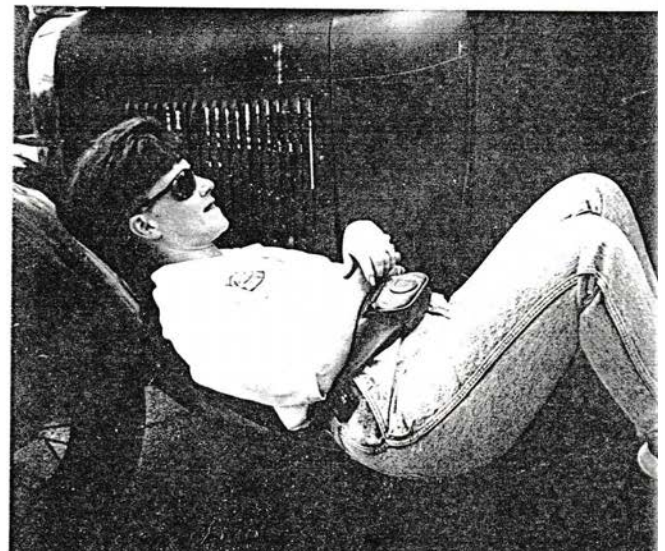
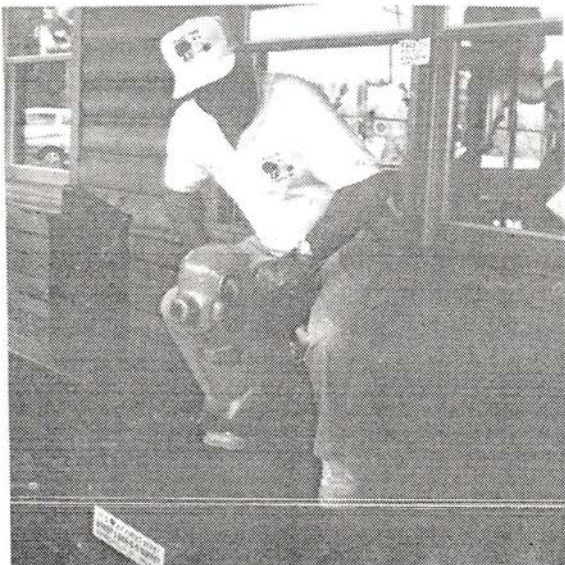
The July 1994 issue of the *Shade Tree A's Newsletter* included a story and photos submitted by Vicky Martin about what club members do at club get-togethers. The *Newsletter* also reported that the recent tour to the Beech Island Heritage Days was THE largest group of Shade Tree A's Model A Fords yet to participate in a tour. The report listed all the participants and their cars, nineteen in total (if I counted correctly). The large turnout was attributed to the free fried chicken or all the goodies brought by the ladies. It was even reported the event drew the largest turnout of grand kids! Another article reported a large attendance for the Ridge Peach Festival tour. Everyone also enjoyed lunch at Bobby's Bar-B-Que. On the technical side, the *Newsletter* included an article on transistor ignition for the Model A.

Everyone, including Monroe Wade, enjoyed lunch at Bobby's Bar-B-Que !

Vicky says this is what men do at Shade Tree A's get-to-gathers:



and this is what the ladies do!





## TECHNICAL TOPICS

### Jim's Tech Tips

#### *"Make and Carry a Temporary Gas Gauge"*

Every now and then you will come across a car or truck with an inoperable gas gauge. For example, the float sinks. You don't want to go driving around without knowing how much fuel you have in the tank.

Here are some basic instructions that you can use to make a temporary gas gauge, to use until the gauge is repaired. It's not a bad idea to carry it with you, to use on your car or to help someone traveling with you.

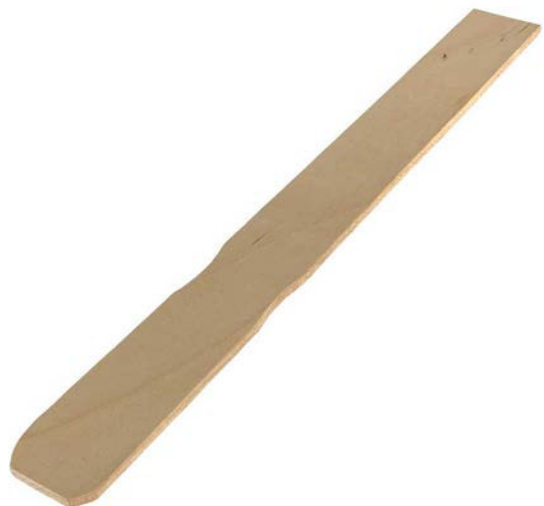
Take a simple paint stirring stick, like they give away at a paint store, and measure up from the end to mark the place indicating a Full tank. From there, you can use a ruler to estimate the  $\frac{1}{2}$ ,  $\frac{1}{4}$  and  $\frac{3}{4}$  levels. Score a line in the wood at these 4 places, and then darken each line with a black marker.

The gas tank changed design between 1928-29 and 1930-31. The '28-29 tank holds about 10 gallons, and the larger '30-31 tank holds about 11. That means that the distance to Full is slightly different between the two tanks.

I score and mark one side of the paint stirrer with the '28-29 height to Full of  $7\frac{1}{4}$ ", and then mark off the quarters from there. Then I do the same on the other side of the stick using the 1930-31 height to Full of  $8\frac{1}{2}$ ". Label each side. Now you have a stick that can be used on any year Model A.

To use it, remove the gas cap (and the screen in the filler neck, if the car has one) and just dip the stick straight down until you touch the bottom of the gas tank. Now lift it out and see where the wet gas level is on the gauge. It will be approximate, close enough to drive with some confidence, knowing you will have enough fuel.

I hope you never get stuck with an inoperative gas gauge, but if you do, now you can be prepared with this temporary stick gauge.



*Have a Model A Day!*

Jim Cannon

## Member Advertisements

Deadline for submittal – 20<sup>th</sup> of the month – Send submittals to [newsletter@ShadeTreeAs.org](mailto:newsletter@ShadeTreeAs.org)

### FOR SALE:

Original Model 'A' flywheel housing, no cracks, bead-blasted, painted and ready to install. \$135.  
Pick it up at my home in Evans, GA. Bring cash. Don Turley 706-589-0738

FOR SALE: 1931 Slant Window Fordor that is partially disassembled. Asking \$4,300 and have lots of parts needed for the restoration. Keith East, Easley, SC (Contact Jim McPherson for more information)

## Paid Advertisements

### SHADE TREE A'S NEWSLETTER SPONSORS

*Our thanks to the following sponsors! Their generosity supports this Newsletter and the Shade Tree A's! Please remember these folks when you need a service they offer. And please, tell them you appreciate their support of our club*

Matt Barrett  
706-799-3699



*Vintage 1930 Model A Ford  
Available For Special Occasions*

**BARRETT SUPPLY CO. INC.**  
Distributor of Wholesale Plumbing  
Irrigation, Pump Supplies, Industrial Plastics  
Since 1922


**GEORGE FISHER**  
P.O. Box 1423  
Augusta, GA 30903  
2501 Mike Padgett Hwy.  
Augusta, GA 30906  
georgef@barrett.supply

Bus: (706) 771-9800  
Toll Free: 1-800-364-2124  
Cell: (706) 513-9655

**Bentley's**  
Antique Auto Service, Inc.

We are a Full Service Shop, specializing in Model A Fords  
We offer Award-Winning Paint and Bodywork  
Expert Service and a Complete Machine Shop

Enjoy the Drive...  
**678-407-1947**



**Bert's Model "A"  
Ford Center**  
2767 S. Tejon, Englewood, CO 80110  
ph# 303-293-3673 or 800-321-1931  
email address - parts@modelastore.com  
[www.modelastore.com](http://www.modelastore.com)

**We buy and sell original and reproduction Model A Ford parts!**



**Big Dog Stump & Tree**



No **BONES** about it,  
We are the **BEST!**  
**3 I.S.A. Certified**  
**Arborist on staff**  
**(706) 447-8787**

**bigdogdisposal@bellsouth.net**  
**P.O. Box 211063 • Martinez, GA 30917**

**BRATTON'S**  
**ANTIQUE AUTO PARTS**



**800-255-1929 Phone**  
**www.brattons.com**  
800-774-1930 Fax  
1606 Back Acre Circle  
Mount Airy, MD 21771

*Your source for Quality Model A Ford Parts since 1976*

**Charlie Williams Auto Glass, Inc.**

Gerald Smith  
706-868-1189 Office /706-868-1190 Fax  
706-305-0578 Cell

406 Shartom Drive  
Augusta, Georgia 30907

email: **Charliewilliamsautoglass@gmail.com**




**cicis**  
**pizza™**

**BENJAMIN HUTTO**  
*Operator/Owner*

bhutto@cicis.com  
4025 Wheeler Rd | Augusta, GA 30907  
o 706.364.6659  
c 803.665.6909

1003 ALEXANDER DRIVE  
AUGUSTA, GA 30909

P.O. BOX 212072  
MARTINEZ, GA 30917




**D'Antignac & Merritt Heating & Air, Inc.**

Turn To The Experts.

**(706) 667-0196**

**Doug Wilson**



**SALES & SUPPLIES**  
www.furnituredoctor.net

*Providing Services for*  
*Estate Liquidations*

**Walter Smith**

Office: 706-798-5951  
Fax: 706-798-7658  
3323 Peach Orchard Road  
Augusta, GA 30906  
supplies@furnituredoctor.net

*Complete Line of Refinishing Supplies for Professional and Do-It-Yourselfers*

**BUY • SELL • TRADE**



**GERALD JONES**  
AUTO GROUP

**CLICKAROO.com**

**GUBEN'S**



**GARAGE**

**Eric Shogren**  
(803) 215-3276  
ericshogren@gforcecable.com

**POWDERCOATING**  
Professional Powdercoating Service

**JRPW Racing Inc.**

200 Rose Street  
Martinez, GA 30907  
info@jrpwracing.net

Jimmy Rivers  
706-863-1206

Mike's "A" Ford-able Parts


**Mike Butcher**

124 Model A Drive, Maysville, GA 30558  
email: mike@mikes-afordable.com - www.mikes-afordable.com  
Fax: 706 652 2492 - Phone: 706 652 3866  
1 888 TRY MIKE (879 6453)



Specialising in 1928 - 1931 Model A Ford Parts

**ANDREW MORSE**  
Buy • Sell • Trade  
Paint & Body

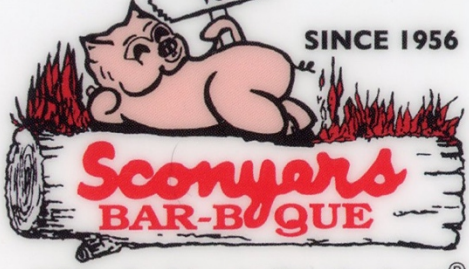


Antique Classic  
& Street Rods

706-834-2342

WELCOME TO...

SINCE 1956



**Sconyers**  
**BAR-B-QUE**

"Old Fashioned Pit Cooked"®



**"ONE MILE AHEAD"**  
*Smith and Jones*  
**ANTIQUE AUTO PARTS**  
SPECIALIZING IN MODEL A AND MODEL T PARTS  
60 Wisconsin St., W. Columbia, SC 29170

Quality Parts • Same Day Shipping  
• Established 1972 •

Order Desk 1-800-422-1928  
1-803-822-4141 • Fax 1-803-822-8477  
All Major Credit Cards Accepted

**Davin E. Smith**



Orders: [www.snjparts.com](http://www.snjparts.com)  
Email: [snjparts@gmail.com](mailto:snjparts@gmail.com)

**Joseph E. Spires**  
ATTORNEY-AT-LAW

Ward & Spires, LLC  
445 Walker Street  
Augusta, Georgia 30901

Phone (706) 724-2640  
Facsimile (706) 724-2642  
E-mail: [Wardspires@aol.com](mailto:Wardspires@aol.com)

  
**Keith Perret, Agent**  
2350 Washington Road  
Augusta, GA 30904-3162  
Cell 225-326-4014  
Bus 706-925-LIFE (5433) Fax 706-434-0438  
[keith@kpinthehouse.com](mailto:keith@kpinthehouse.com)  
[kpinthehouse.com](http://kpinthehouse.com)  
The greatest compliment you can give is a referral.



**SINCE 1937**  
***Stuckey's***®

**Founded in 1937 by W.S. Stuckey, Sr.  
with a Model A Ford & a \$35 Loan**


Come Visit Us! • 705 S. Main Street • Wrens, GA  
[stuckeys.com](http://stuckeys.com)

  
**Broderick "Brodie" Godbee**  
LICENSED AND INSURED  
Hand Wash, Wax and Custom Detailing  
678-325-8448  
134 Davis Rd.  
Martinez, GA 30907

 [mrcarwash](https://www.instagram.com/mrcarwash)  
[mrcarwashga.com](http://mrcarwashga.com)  
[supershinecarcare@gmail.com](mailto:supershinecarcare@gmail.com)  
4750 Washington Rd.  
Evans, GA 30809

**JAMIE & LANIER DUKES**  
Owners

***Wife Saver***  
RESTAURANTS



CATERING AVAILABLE

3316 Washington Road  
Martinez, Georgia 30907  
706-860-2605  
[lanierdukes123@gmail.com](mailto:lanierdukes123@gmail.com)